



FOR LEASE



SHERWOOD RETAIL / OFFICE / SERVICE SPACE

2nd-Generation Retail, Office, Service Space
1,970 SF | \$23 psf + NNN

20510 SW Roy Rogers Rd, Sherwood, OR 97140

- Across from Sherwood Crossings Retail Center
- Previous Use - Full-Service Salon
- High-end Finishes Used Throughout
- Building Signage Opportunity Facing Roy Rogers Road
- Available Now

IAN M. BIGGI

Senior Associate Broker | Licensed in OR
503-222-1683 | ianbiggi@capacitycommercial.com



PROPERTY SUMMARY

FOR LEASE



PROPERTY DETAILS

Address	20510 SW Roy Rogers Rd, Sherwood, OR 97140
Available Space	1970 SF
Suite Available	2nd Generation Retail / Office Space
Lease Rate	\$23 psf + NNN
Use Type	Retail, Office, Service
Availability	Now

Location Features

- Double-door Entrance off Courtyard
- Gas Fireplace in Lobby/ Reception Area
- Built-in Speakers Throughout
- Several Treatment Rooms with Sinks
- Mature Tranquil Landscaped Property
- Off-Street Parking
- Proximity to Hwy 99 & Roy Rogers Road Intersection
- Co-Tenants: Trees Restaurant, Evolve Physical Therapy, and Sherwood Acupuncture

Nearby Highlights

- Safeway
- Target
- Starbucks
- Hobby Lobby
- Crazy Sushi
- Insight Massage Therapy
- McCabe Real Estate Group
- Home Depot
- La Sen Vietnamese Grill
- Planet Fitness
- Subway
- Walmart Superstore



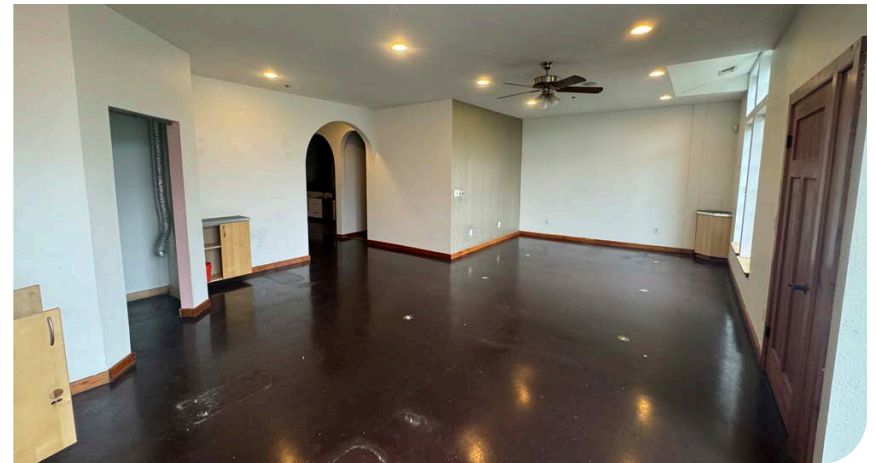
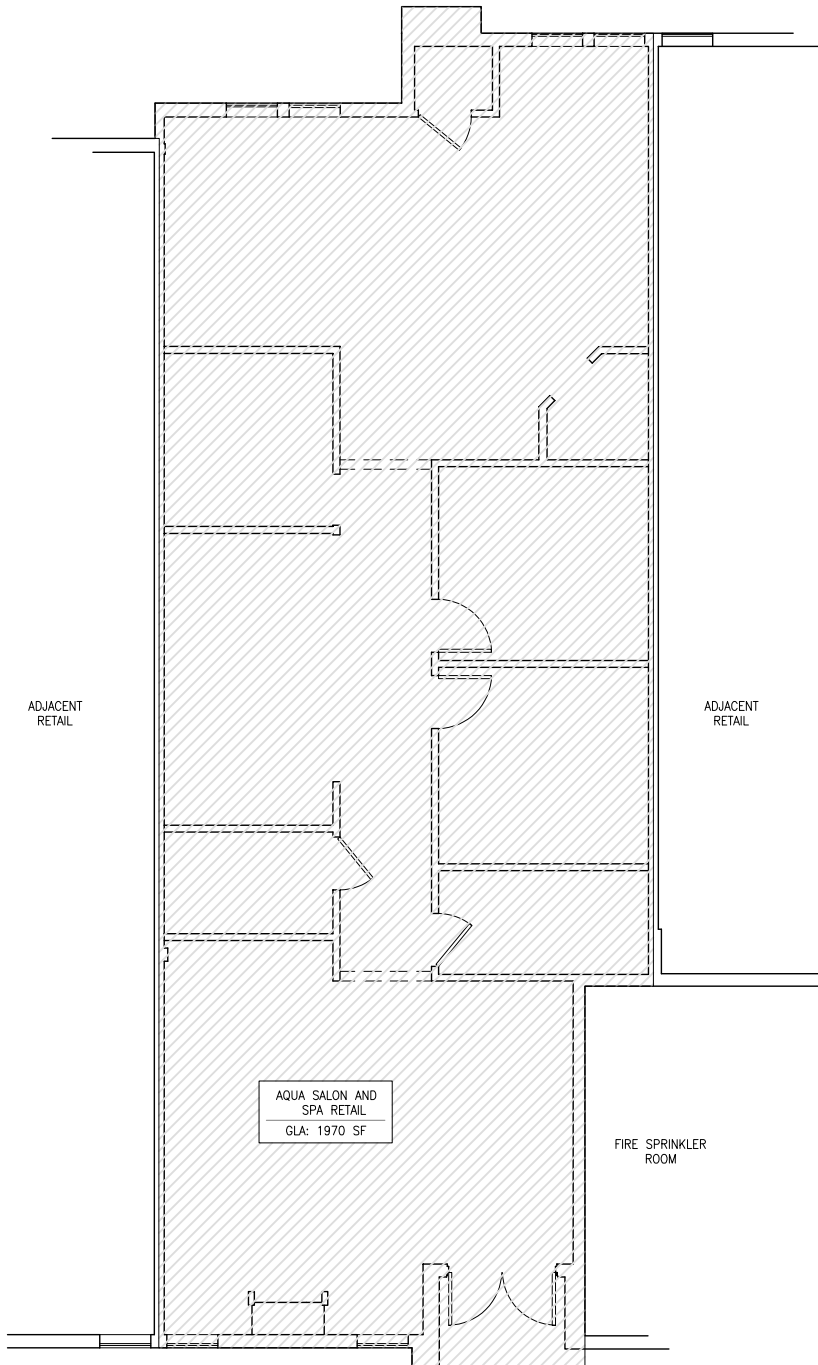
65
Walk Score®
"Somewhat Walkable"

65
Bike Score®
"Bikeable"

Ratings provided bywalkscore.com



FLOOR PLAN & PHOTOS





LOCAL AERIAL MAP



IAN M. BIGGI

Senior Associate Broker | Licensed in OR
503-222-1683 | ianbiggi@capacitycommercial.com

SHERWOOD RETAIL / OFFICE / SERVICE SPACE