

OFFICE/MEDICAL SPACES FOR LEASE

2618 SE J ST

Bentonville, AR 72712



PROPERTY DESCRIPTION

Prime office/medical spaces available in Bentonville, offering a prime location and functional layouts for any business. Positioned at the highly visible corner of SE J St (14,000 VPD) and SE 28th St (13,000 VPD), the property is just two minutes from SE Walton Blvd, less than five minutes from the new Walmart HQ, and only 10 minutes from Downtown Bentonville.

PROPERTY HIGHLIGHTS

- Available Suites: Suite 2 - +/- 1,500 SF and Suite 4 - +/- 1,500 SF
- High Visibility and Traffic Flow
- Ample Parking for Tenants and Visitors
- Less than Five Minutes from Walmart HQ

OFFERING SUMMARY

Lease Rate:	\$19.50 SF/yr (NNN)
Number of Units:	6
Available SF:	1,500 - 3,000 SF
Building Size:	9,625 SF

DEMOGRAPHICS	1 MILE	3 MILES	5 MILES
Total Households	2,345	22,965	47,886
Total Population	5,124	58,906	129,663
Average HH Income	\$79,004	\$117,010	\$130,503

We obtained the information above from sources we believe to be reliable. However, we have not verified its accuracy and make no guarantee, warranty or representation about it. It is submitted subject to the possibility of errors, omissions, change of price, rental or other conditions, prior sale, lease or financing, or withdrawal without notice. We include projections, opinions, assumptions or estimates for example only, and they may not represent current or future performance of the property. You and your tax and legal advisors should conduct your own investigation of the property and transaction.

SALMONSEN GROUP

Executive Broker
O: 479.231.1355
C: 479.330.1250
sgrleadmanager@gmail.com
AR #EB00066512

KW COMMERCIAL
201 SW 14th St.
Suite 203
Bentonville, AR 72712

Each Office Independently Owned and Operated salmonsengroup.com

OFFICE/MEDICAL SPACES FOR LEASE

2618 SE J ST

Bentonville, AR 72712



We obtained the information above from sources we believe to be reliable. However, we have not verified its accuracy and make no guarantee, warranty or representation about it. It is submitted subject to the possibility of errors, omissions, change of price, rental or other conditions, prior sale, lease or financing, or withdrawal without notice. We include projections, opinions, assumptions or estimates for example only, and they may not represent current or future performance of the property. You and your tax and legal advisors should conduct your own investigation of the property and transaction.

SALMONSEN GROUP

Executive Broker
O: 479.231.1355
C: 479.330.1250
sgrleadmanager@gmail.com
AR #EB00066512

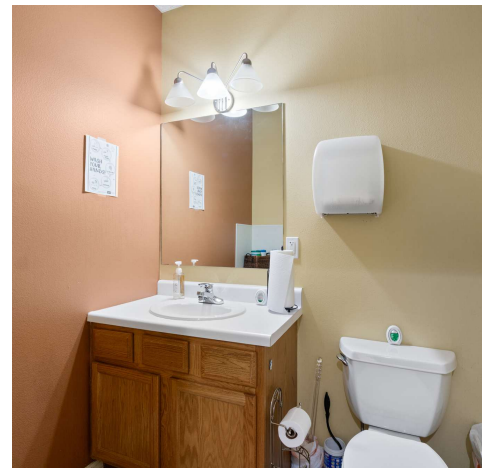
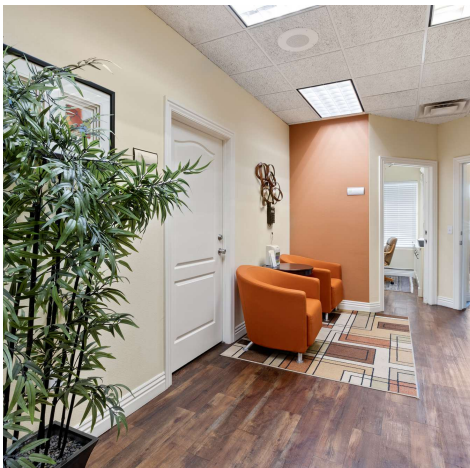
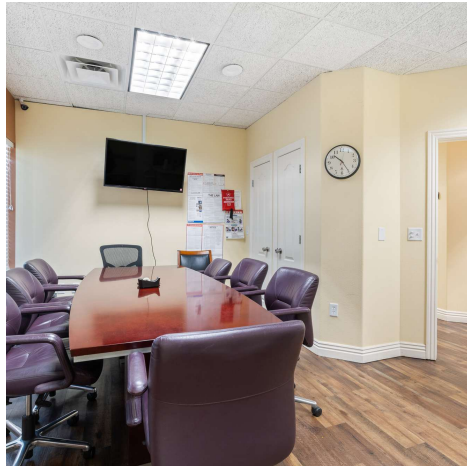
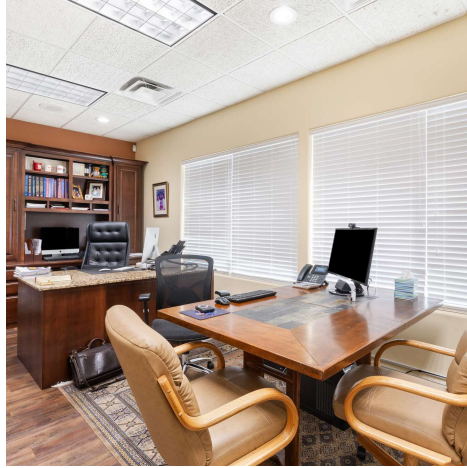
KW COMMERCIAL
201 SW 14th St.
Suite 203
Bentonville, AR 72712

Each Office Independently Owned and Operated salmonsengroup.com

OFFICE/MEDICAL SPACES FOR LEASE

2618 SE J ST. SUITE 2 PHOTOS

Bentonville, AR 72712



We obtained the information above from sources we believe to be reliable. However, we have not verified its accuracy and make no guarantee, warranty or representation about it. It is submitted subject to the possibility of errors, omissions, change of price, rental or other conditions, prior sale, lease or financing, or withdrawal without notice. We include projections, opinions, assumptions or estimates for example only, and they may not represent current or future performance of the property. You and your tax and legal advisors should conduct your own investigation of the property and transaction.

SALMONSEN GROUP

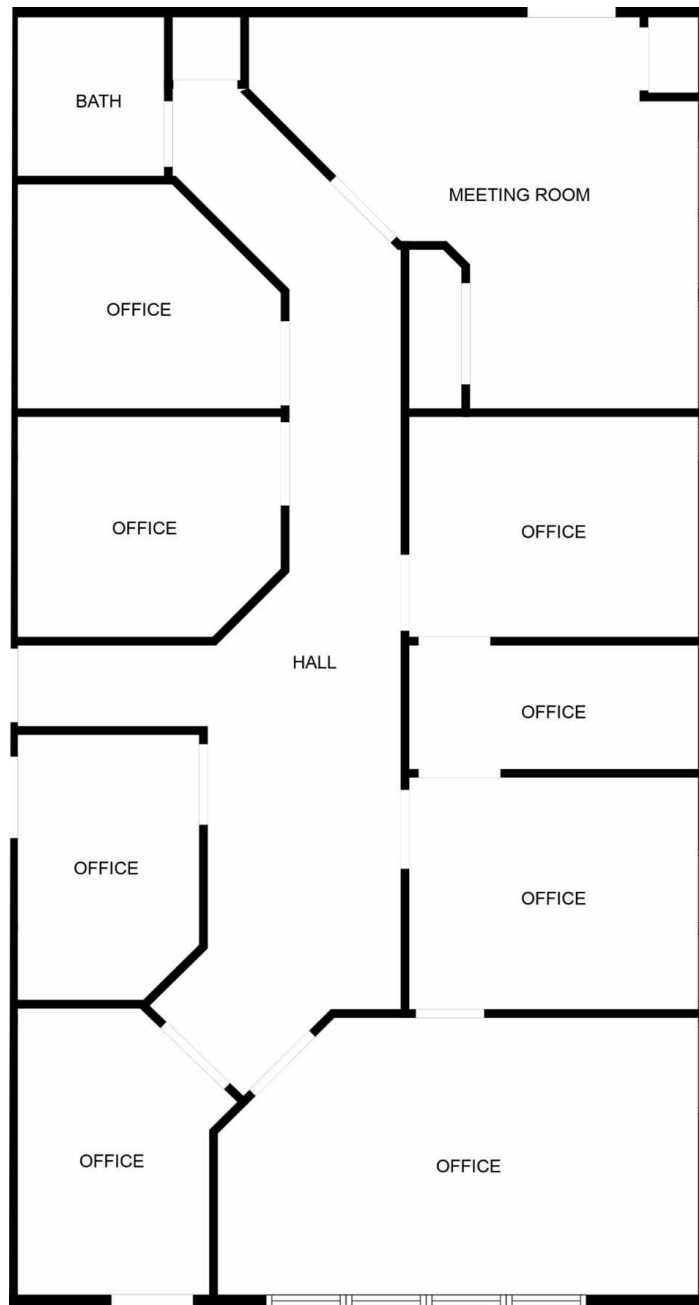
Executive Broker
O: 479.231.1355
C: 479.330.1250
sgrleadmanager@gmail.com
AR #EB00066512

KW COMMERCIAL
201 SW 14th St.
Suite 203
Bentonville, AR 72712

Each Office Independently Owned and Operated salmonsengroup.com

2618 SE J ST. SUITE 2 FLOOR PLAN

Bentonville, AR 72712



Suite 2
+/- 1,500 SF

We obtained the information above from sources we believe to be reliable. However, we have not verified its accuracy and make no guarantee, warranty or representation about it. It is submitted subject to the possibility of errors, omissions, change of price, rental or other conditions, prior sale, lease or financing, or withdrawal without notice. We include projections, opinions, assumptions or estimates for example only, and they may not represent current or future performance of the property. You and your tax and legal advisors should conduct your own investigation of the property and transaction.

SALMONSEN GROUP
Executive Broker
O: 479.231.1355
C: 479.330.1250
sgrleadmanager@gmail.com
AR #EB00066512

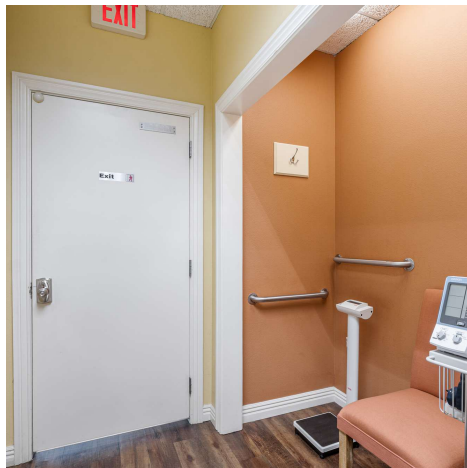
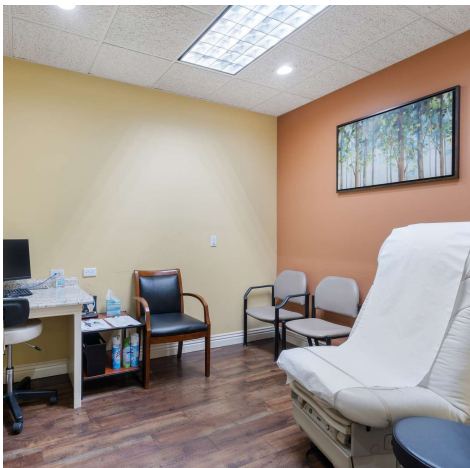
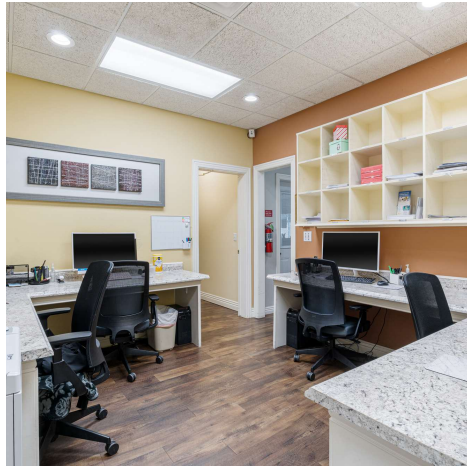
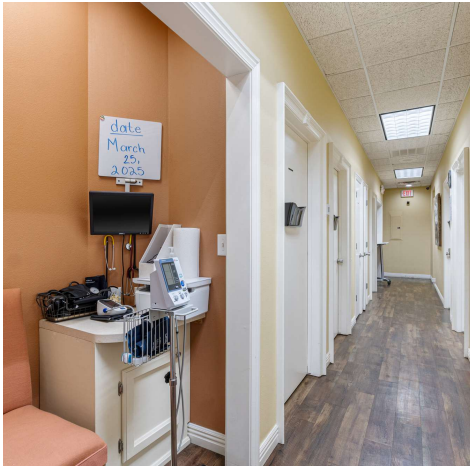
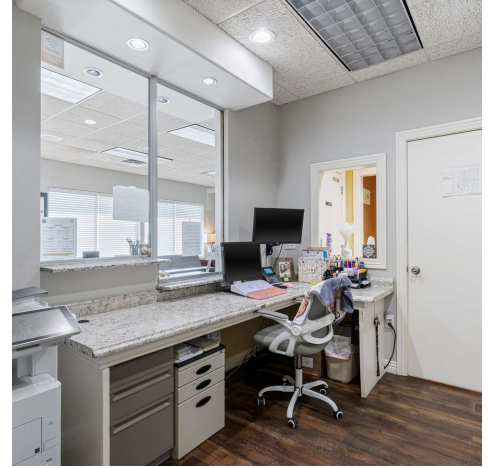
KW COMMERCIAL
201 SW 14th St.
Suite 203
Bentonville, AR 72712

Each Office Independently Owned and Operated salmonsengroup.com

OFFICE/MEDICAL SPACES FOR LEASE

2618 SE J ST. SUITE 4 PHOTOS

Bentonville, AR 72712



We obtained the information above from sources we believe to be reliable. However, we have not verified its accuracy and make no guarantee, warranty or representation about it. It is submitted subject to the possibility of errors, omissions, change of price, rental or other conditions, prior sale, lease or financing, or withdrawal without notice. We include projections, opinions, assumptions or estimates for example only, and they may not represent current or future performance of the property. You and your tax and legal advisors should conduct your own investigation of the property and transaction.

SALMONSEN GROUP
Executive Broker
O: 479.231.1355
C: 479.330.1250
sgrleadmanager@gmail.com
AR #EB00066512

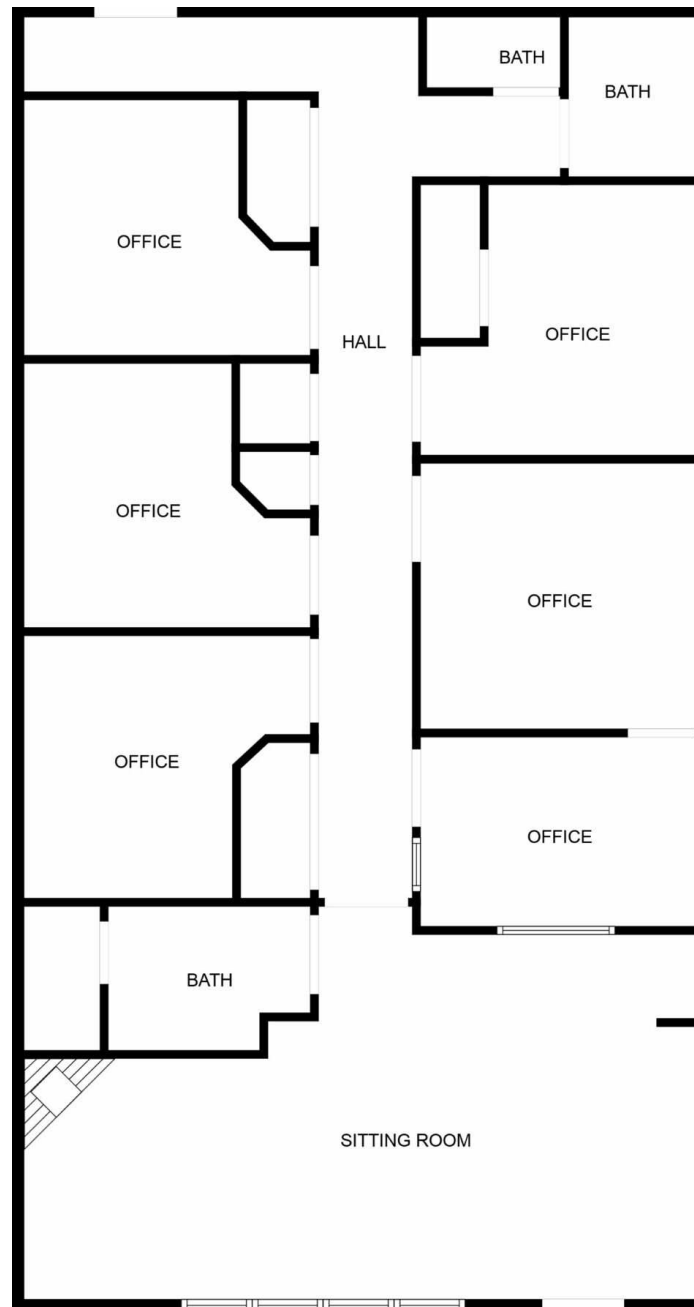
KW COMMERCIAL
201 SW 14th St.
Suite 203
Bentonville, AR 72712

Each Office Independently Owned and Operated salmonsengroup.com

OFFICE/MEDICAL SPACES FOR LEASE

2618 SE J ST. SUITE 4 FLOOR PLAN

Bentonville, AR 72712



Suite 4
+/- 1,500 SF

We obtained the information above from sources we believe to be reliable. However, we have not verified its accuracy and make no guarantee, warranty or representation about it. It is submitted subject to the possibility of errors, omissions, change of price, rental or other conditions, prior sale, lease or financing, or withdrawal without notice. We include projections, opinions, assumptions or estimates for example only, and they may not represent current or future performance of the property. You and your tax and legal advisors should conduct your own investigation of the property and transaction.

SALMONSEN GROUP
Executive Broker
O: 479.231.1355
C: 479.330.1250
sgrleadmanager@gmail.com
AR #EB00066512

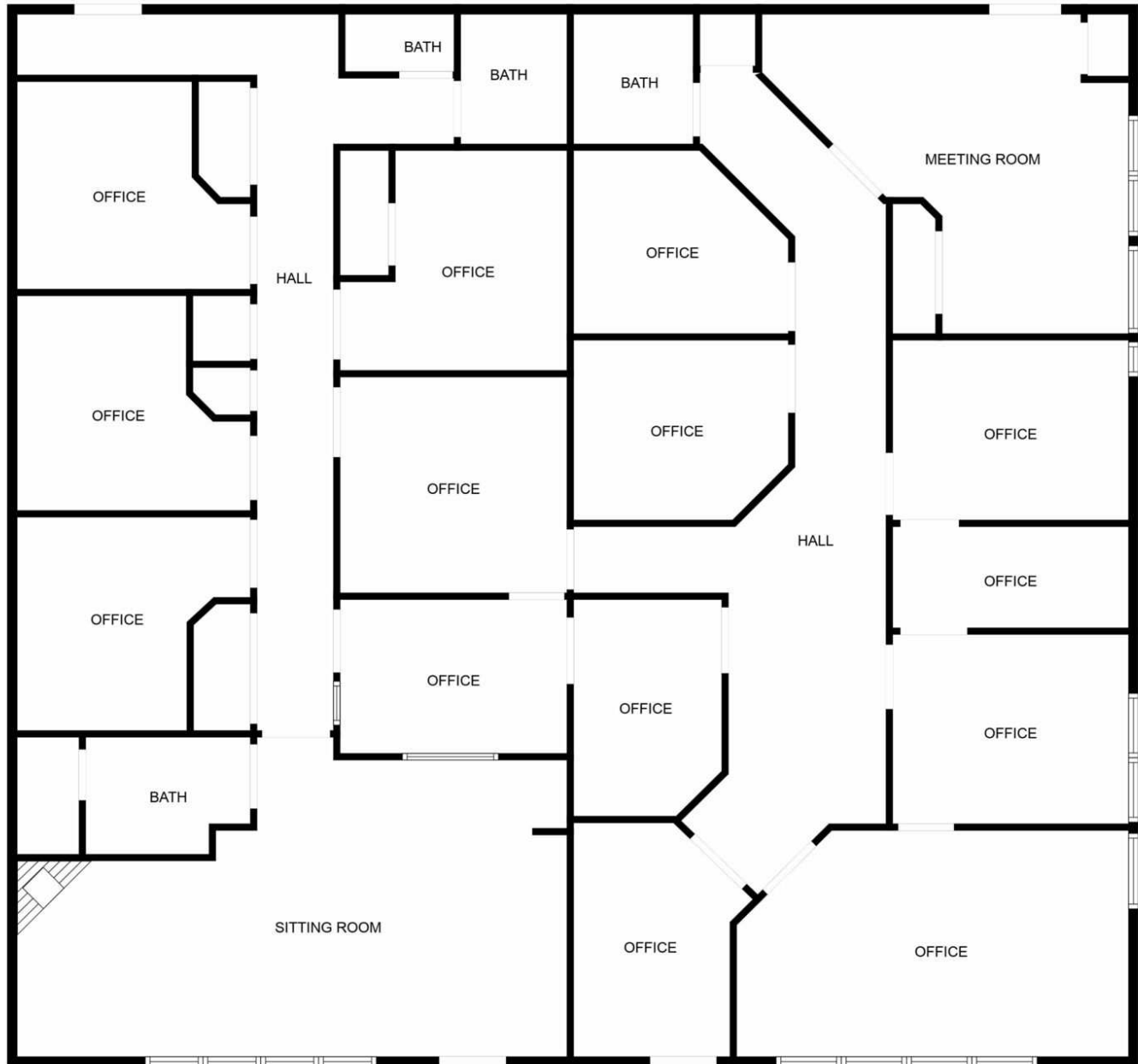
KW COMMERCIAL
201 SW 14th St.
Suite 203
Bentonville, AR 72712

Each Office Independently Owned and Operated salmonsengroup.com

OFFICE/MEDICAL SPACES FOR LEASE

2618 SE J ST. SUITE 2 & 4 FLOOR PLAN

Bentonville, AR 72712



Suite 4 & 2 +/- 3,000 SF

FLOOR PLAN CREATED BY CUBICASA APP. MEASUREMENTS DEEMED HIGHLY RELIABLE BUT NOT GUARANTEED.

We obtained the information above from sources we believe to be reliable. However, we have not verified its accuracy and make no guarantee, warranty or representation about it. It is submitted subject to the possibility of errors, omissions, change of price, rental or other conditions, prior sale, lease or financing, or withdrawal without notice. We include projections, opinions, assumptions or estimates for example only, and they may not represent current or future performance of the property. You and your tax and legal advisors should conduct your own investigation of the property and transaction.

SALMONSEN GROUP
Executive Broker
O: 479.231.1355
C: 479.330.1250
sgrleadmanager@gmail.com
AR #EB00066512

KW COMMERCIAL
201 SW 14th St.
Suite 203
Bentonville, AR 72712

Each Office Independently Owned and Operated salmonsengroup.com

OFFICE/MEDICAL SPACES FOR LEASE

2618 SE J ST

Bentonville, AR 72712



We obtained the information above from sources we believe to be reliable. However, we have not verified its accuracy and make no guarantee, warranty or representation about it. It is submitted subject to the possibility of errors, omissions, change of price, rental or other conditions, prior sale, lease or financing, or withdrawal without notice. We include projections, opinions, assumptions or estimates for example only, and they may not represent current or future performance of the property. You and your tax and legal advisors should conduct your own investigation of the property and transaction.

SALMONSEN GROUP

Executive Broker
O: 479.231.1355
C: 479.330.1250
sgrleadmanager@gmail.com
AR #EB00066512

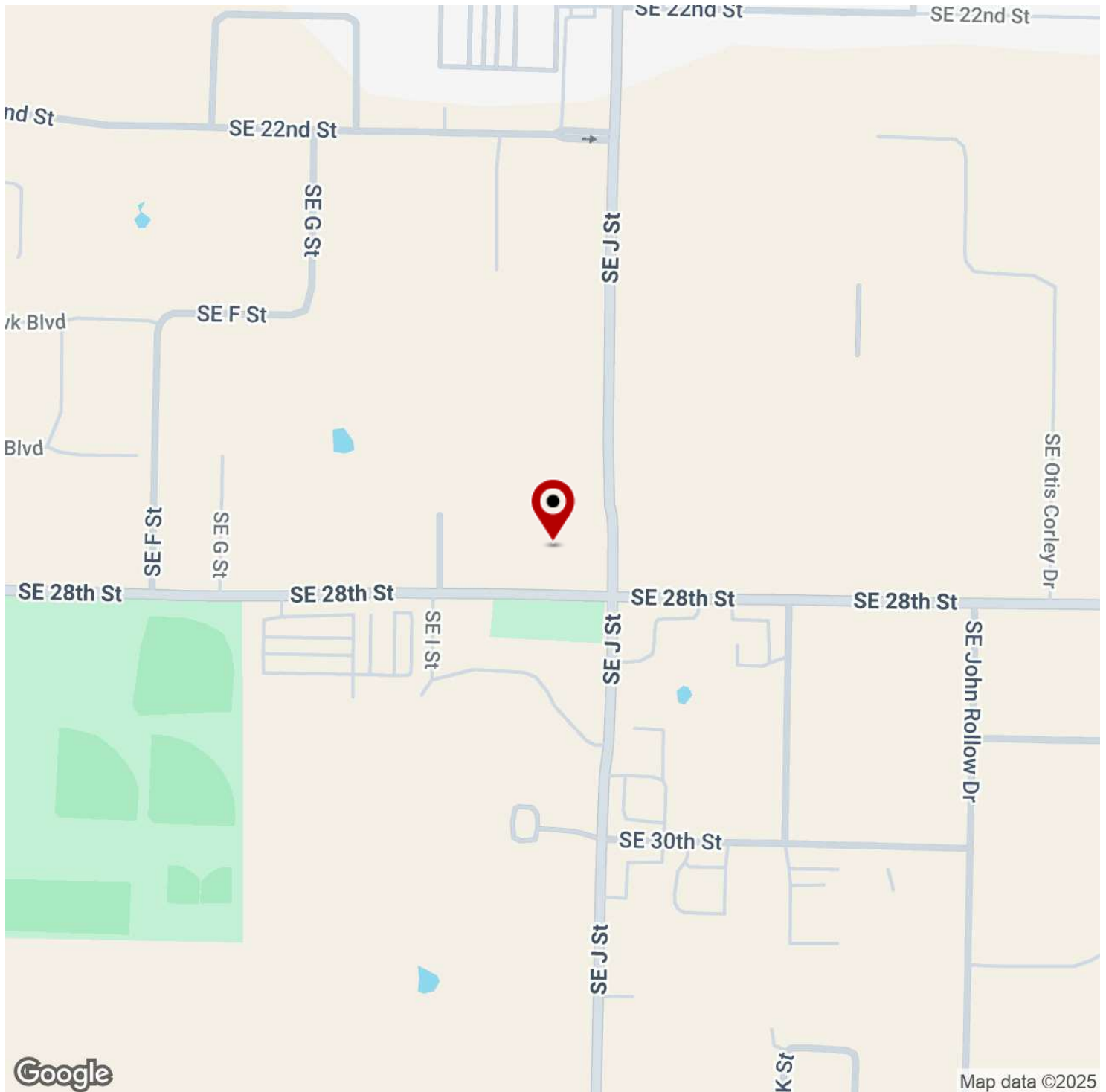
KW COMMERCIAL
201 SW 14th St.
Suite 203
Bentonville, AR 72712

Each Office Independently Owned and Operated salmonsengroup.com

OFFICE/MEDICAL SPACES FOR LEASE

2618 SE J ST

Bentonville, AR 72712



We obtained the information above from sources we believe to be reliable. However, we have not verified its accuracy and make no guarantee, warranty or representation about it. It is submitted subject to the possibility of errors, omissions, change of price, rental or other conditions, prior sale, lease or financing, or withdrawal without notice. We include projections, opinions, assumptions or estimates for example only, and they may not represent current or future performance of the property. You and your tax and legal advisors should conduct your own investigation of the property and transaction.

SALMONSEN GROUP

Executive Broker
O: 479.231.1355
C: 479.330.1250
sgrleadmanager@gmail.com
AR #EB00066512

KW COMMERCIAL

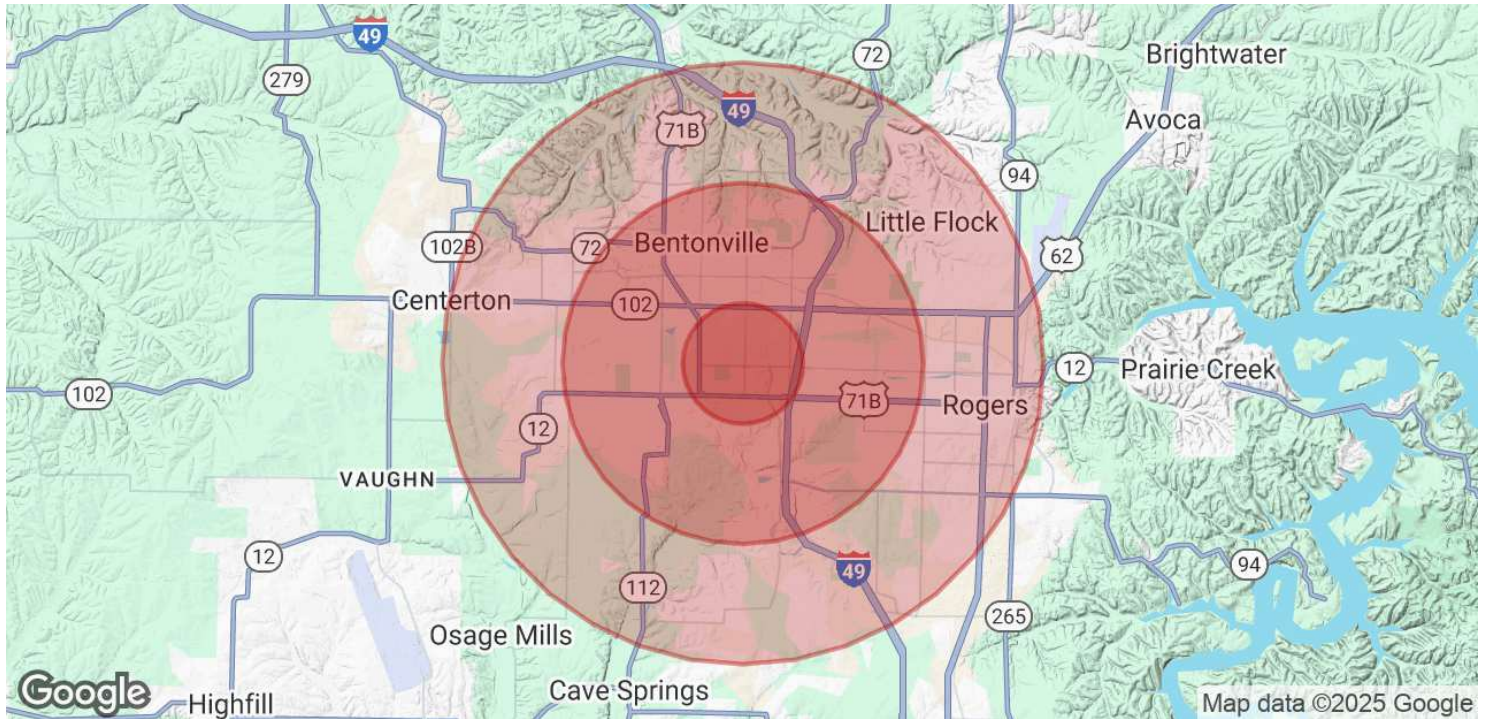
201 SW 14th St.
Suite 203
Bentonville, AR 72712

Each Office Independently Owned and Operated salmonsengroup.com

OFFICE/MEDICAL SPACES FOR LEASE

2618 SE J ST

Bentonville, AR 72712



POPULATION	1 MILE	3 MILES	5 MILES
Total Population	5,124	58,906	129,663
Average Age	35	36	36
Average Age (Male)	33	34	35
Average Age (Female)	37	37	37

HOUSEHOLDS & INCOME	1 MILE	3 MILES	5 MILES
Total Households	2,345	22,965	47,886
# of Persons per HH	2.2	2.6	2.7
Average HH Income	\$79,004	\$117,010	\$130,503
Average House Value	\$268,656	\$366,535	\$383,687

Demographics data derived from AlphaMap

We obtained the information above from sources we believe to be reliable. However, we have not verified its accuracy and make no guarantee, warranty or representation about it. It is submitted subject to the possibility of errors, omissions, change of price, rental or other conditions, prior sale, lease or financing, or withdrawal without notice. We include projections, opinions, assumptions or estimates for example only, and they may not represent current or future performance of the property. You and your tax and legal advisors should conduct your own investigation of the property and transaction.

SALMONSEN GROUP
Executive Broker
O: 479.231.1355
C: 479.330.1250
sgrleadmanager@gmail.com
AR #EB00066512

KW COMMERCIAL
201 SW 14th St.
Suite 203
Bentonville, AR 72712

Each Office Independently Owned and Operated salmonsengroup.com