

## 9,000 SF WAREHOUSE/OFFICE BUILDING FOR SALE

8428 Quarry Rd  
Manassas, VA 20110



**CALLING ALL CONTRACTORS!** This prime location for sale on the corner of Quarry Road and Liberia Avenue in the City of Manassas has it all: Warehouse and Outside Storage. The 9,000 SF building includes two drive-in-doors, parts room, server room, conference room, waiting room, reception, kitchen, several private offices and a small fenced outside storage yard. Zoned I2 in the City of Manassas.

Wright Realty, Inc. founded in 1946 continues to serve your real estate needs with over 75 years and five generations of experience.



Edward B. Wright, III

9009 Sudley Road  
Manassas, Virginia 20110

Phone: 703-368-8136

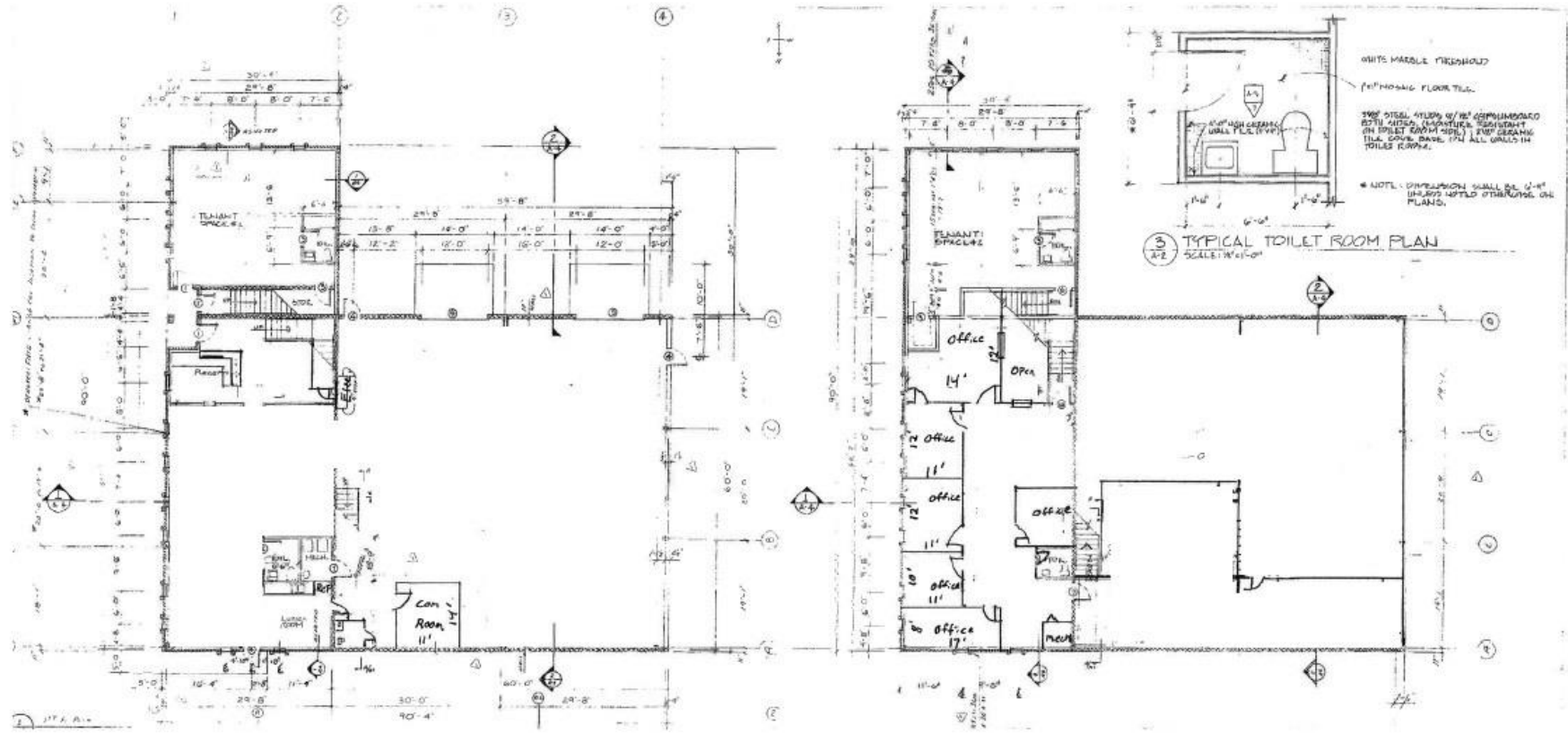
Fax: 703-368-7238

Email: [ebw@wright-](mailto:ebw@wright-)

*Offering subject to errors, omissions, prior sale, change in price, or withdrawal without notice.*







§ 130-241 TABLE 2

"P"= Permitted By-Right "S"= Special Use Permit is Required

CATEGORY	USE TYPE	ZONING DISTRICTS									ADDITIONAL REQUIREMENTS
		NON-RESIDENTIAL & MIXED USE DISTRICTS									
		B-2 <sup>1</sup>	B-3	B-3.5	PMD	B-1 <sup>2</sup>	B-4	I-1	I-2	I-A	
RESIDENTIAL	Age-Restricted Housing			P	P						Sec. 130-308
	Duplex			P	P						
	Dwelling, Multifamily		P	P	P						Sec. 130-303
	Dwelling, Single-Family Attached			P	P						
	Dwelling, Single-Family Detached		P	P	P						
	Group Home		P	P	P						
	Manufactured Home										Sec. 130-98
	Manufactured Home Park										Sec. 130-98
	Private Community Recreational Use		P	P	P						
ASSEMBLY & INSTITUTIONAL	Assembly, Place of (less than 50 persons)	P	P	P	P	P	P	S		S	
	Assembly, Place of (50 or more persons)	S	S	S	S	S	S	S		S	
	Broadcasting or Telecommunication Tower	S			S	S	S	S	S	S	
	Broadcasting or Telecommunication Tower, Co-location	P	P	P	P	P	P	P	P	P	Sec. 130-92
	Business or Trade School (less than 50 persons)	P	P	P	P	P	P	P		P	
	Business or Trade School (50 or more persons)	S	S	S	S	P	P	S		S	
	Cemetery	S	S	S	S	S	S	S			

<sup>1</sup> All uses subject to floor area limit of 10,000 square feet

<sup>2</sup> Refer to § 130-301 for list of uses subject to 25% gross floor area limit

§ 130-241 TABLE 2

"P"= Permitted By-Right "S"= Special Use Permit is Required

CATEGORY	USE TYPE	ZONING DISTRICTS									ADDITIONAL REQUIREMENTS
		NON-RESIDENTIAL & MIXED USE DISTRICTS									
		B-2 <sup>1</sup>	B-3	B-3.5	PMD	B-1 <sup>2</sup>	B-4	I-1	I-2	I-A	
ASSEMBLY & INSTITUTIONAL (CONT)	Child Care Center	P	S	S	P	S	P	S		S	
	Children's Residential Facility			S	S						
	Congregate/Continuing Care, Assisted Living Facility			S	S						
	Cultural Facility	P	P	P	P		P			S	
	Day Care Center, Adult	P	S	S	P	S	P	S			
	Educational Facility, College or University		S	S	S	S	S	S		S	
	Educational Facility, Primary or Secondary		S	S	S	S	S	S		S	
	Hospital				S	S	S				
	Medical Care Facility	S	S	S	S	S	S				
	Nursing Home			S	S						
	Public Dancehall						S	S			Ch. 14
	Public Facility	P	P	P	P	P	P	P	P	P	
	Public Utility	P	P	P	P	P	P	P	P	P	
	Sexually Oriented Business (Adult Cabaret/Adult Motion Picture Theater)							P			Sec. 130-103
	Shelter, Residential						S	S			
COMMERCIAL	Agriculture and Silviculture										
	Airport or Aviation Facility							P		P	
	Antique Shop	P	P	P	P		P				
	Bed and Breakfast		P	S	S						Sec. 130-91
	Brewery (500 barrels or less annually) or Distillery (5,000 gallons or less annually)	P	P	P	P		P				

§ 130-241 TABLE 2

"P"= Permitted By-Right "S"= Special Use Permit is Required

CATEGORY	USE TYPE	ZONING DISTRICTS									ADDITIONAL REQUIREMENTS
		NON-RESIDENTIAL & MIXED USE DISTRICTS									
		B-2 <sup>1</sup>	B-3	B-3.5	PMD	B-1 <sup>2</sup>	B-4	I-1	I-2	I-A	
COMMERCIAL (CONT)	Brewery (over 500 barrels annually) or Distillery (over 5,000 gallons annually)	S	S	S	P		P	P	P		
	Business Support Service	P	P	P	P	P	P	P	P	P	
	Car Wash	S			S		P	S			
	Catering Facility	P	P	P	P		P	P		P	
	Construction Material Sales						P	P			Sec. 130-61
	Consumer Repair or Contractor/Tradesperson Services	P	S	S	S		P	P	P		
	Craft Shop	P	P	P	P		P	P			Sec. 130-61
	Crematory	S	S	S	S	S	S	S	S		
	Financial Institution	P	P	P	P	P	P	P			
	Garden Center						P	P			Sec. 130-61
	Gasoline Station	S			S		S	S	S	S	
	Heliport				S		S	S		P	
	Hotel		P	P	P		P			S	
	Kennel				S		S	S			Sec. 130-97
	Liquor Store						P				Sec. 130-94
	Mini-Warehouse or Self-Storage						P	P	P		
	Motor Vehicle Parts/Supply Establishment						P	P	P		
	Motor Vehicle Repair, Minor						S	S	P		Sec. 130-100
	Motor Vehicle Sales and Rental						S	S	P	S	Sec. 130-99
	Office, General	P	P	P	P	P	P	P		P	
Office, Medical	P	P	P	P	P	P					
Parking Structure, Multilevel		P	P	P	P	P	P	P	P		

§ 130-241 TABLE 2

"P"= Permitted By-Right "S"= Special Use Permit is Required

CATEGORY	USE TYPE	ZONING DISTRICTS									ADDITIONAL REQUIREMENTS
		NON-RESIDENTIAL & MIXED USE DISTRICTS									
		B-2 <sup>1</sup>	B-3	B-3.5	PMD	B-1 <sup>2</sup>	B-4	I-1	I-2	I-A	
COMMERCIAL (CONT)	Personal Improvement Service	P	P	P	P	P	P	P		P	
	Professional Personal Service	P	P	P	P	P	P			P	
	Restaurant	P	P	P	P		P			P	
	Retail Sales	P	P	P	P	P	P			P	
	Sexually Oriented Business (Adult Bookstore or Video Store/Seminude Model Studio/Sexual Device Shop)							P	P		Sec. 130-103
	Short-Term Loan Establishment						P				Sec. 130-94
	Specialty Food Shop	P	P	P	P	P	P	P		P	
	Tattoo Parlor and/or Body Piercing Salon						P				
	Veterinary Hospital	P	P	P	P		P	S			
INDUSTRIAL	Heavy Equipment Sales and Rental							S	P		Sec. 130-99
	Laboratory					P		P	P	P	
	Laundry, Commercial							P	P		
	Manufacturing, Heavy								S		
	Manufacturing, Light							P	P	P	
	Motor Vehicle Repair, Major							S	P		Sec. 130-100
	Research and Development					P		P	P	P	
Storage Yard/Facility/Chemical Storage/Tank Farm (Hazardous Materials)							S	S	S		



§ 130-241 TABLE 2

"P"= Permitted By-Right "S"= Special Use Permit is Required

CATEGORY	USE TYPE	ZONING DISTRICTS									ADDITIONAL REQUIREMENTS
		NON-RESIDENTIAL & MIXED USE DISTRICTS									
		B-2 <sup>1</sup>	B-3	B-3.5	PMD	B-1 <sup>2</sup>	B-4	I-1	I-2	I-A	
INDUSTRIAL (CONT)	Storage Yard/Facility/Chemical Storage/Tank Farm (Non-Hazardous Materials)								P		
	Truck Terminal								P		
	Warehousing and Distribution							P	P	P	
	Wholesale Trade							P	P	P	
ACCESSORY	Accessory Uses	P	P	P	P	P	P	P	P	P	Sec. 130-57
	Amateur Radio Tower		P	P	P						Sec. 130-57
	Caretaker Quarters						P	P	P		
	Family Day Home		P	P	P						Sec. 130-93
	Family Health Care Structure, Temporary		P	P	P						Sec. 130-104
	Home Business		S	S	S						Sec. 130-95
	Home Occupation		P	P	P						Sec. 130-96
	Temporary Use (Outdoor Events)	P	P	P	P	P	P	P	P	P	Sec. 130-104 Ch. 14
	Temporary Use (Outdoor Sales)	P	P	P	P	P	P	P	P	P	Sec. 130-104
	Yard Sale, Residential		P	P	P						Sec. 130-101