

FOR LEASE

7,964 SF AVAILABLE



9920 CORPORATE CAMPUS DR

LOUISVILLE, KY 40223

PROPERTY HIGHLIGHTS

Walk to nearby dining, retail and hotels from this prestigious Class A office building. The Corporate Campus professional office campus has a park-like setting, beautiful landscaping and includes a courtyard for tenants and their employees. Just minutes from I-64, I-264 and I-265.

Building Size: 70,417 sf

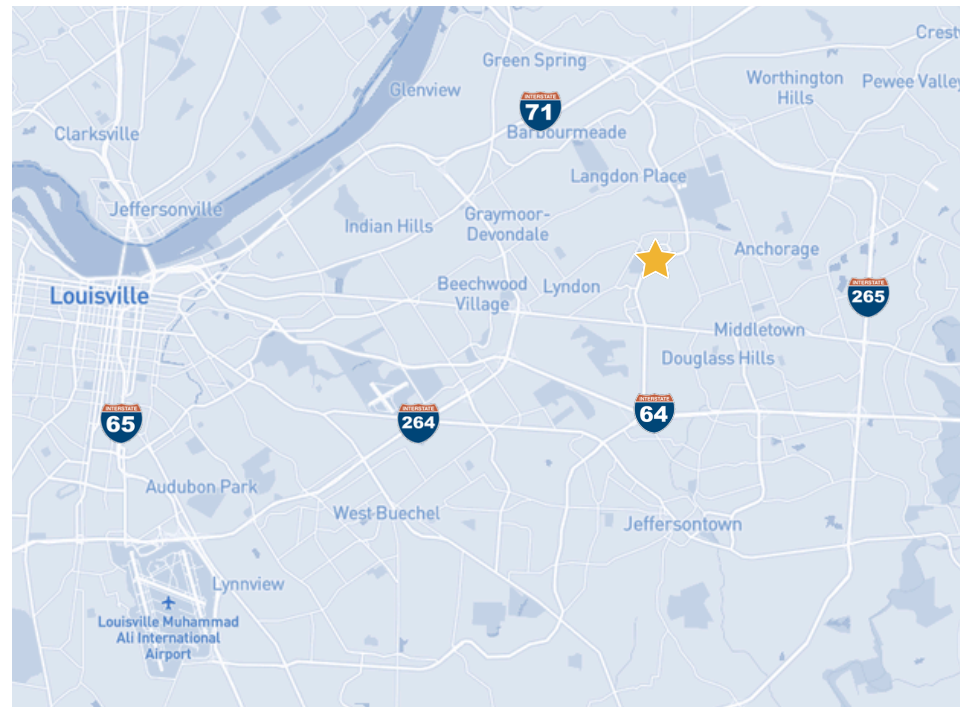
Space Available: Suite 1500: 7,964 sf

Zoning: PRO

Year Built: 1998

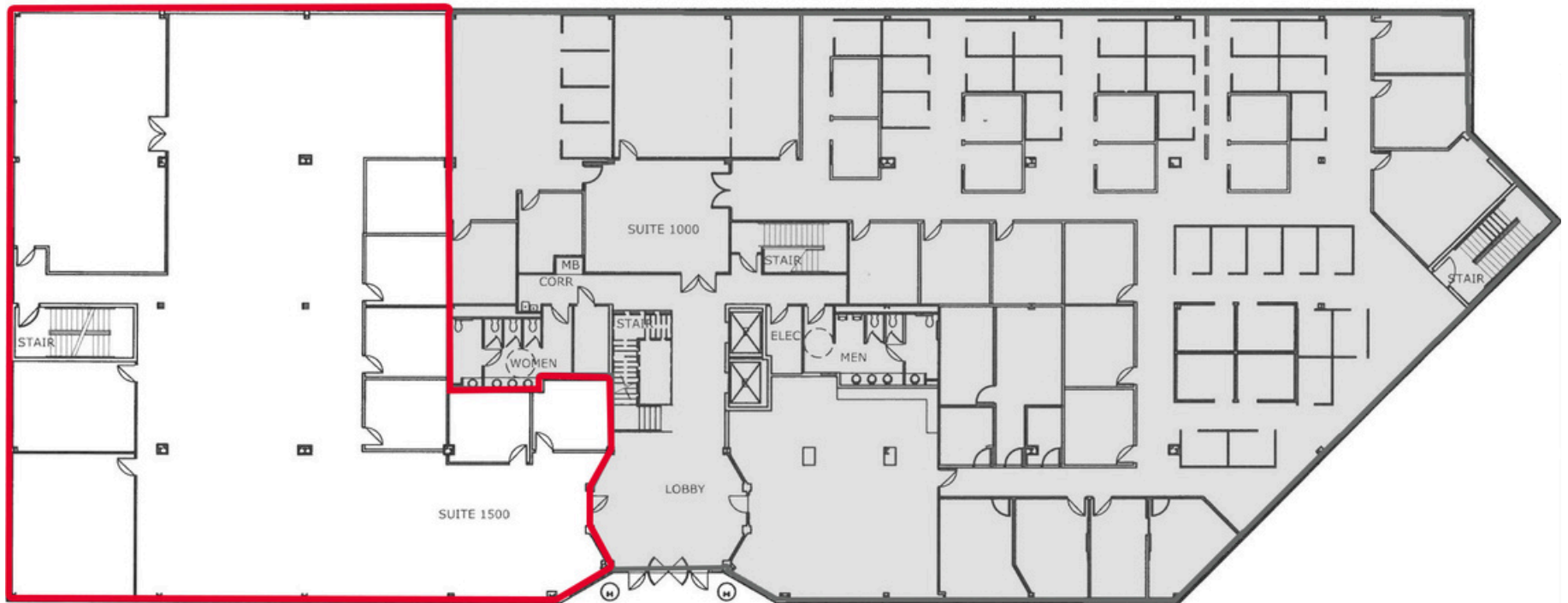
Class: Class A

Parking Ratio: 4/1,000 sf





PROPERTY
LOCATION



SUITE 1500
7,964 SF

CONTACT INFORMATION

E.P. SCHERER

Senior Director

epscherer@commercialkentucky.com

+1 502 719 3234

SAM GRAY

Senior Associate

samgray@commercialkentucky.com

+1 502 719 3240



©2025 Cushman & Wakefield. All rights reserved. The information contained in this communication is strictly confidential. This information has been obtained from sources believed to be reliable but has not been verified. NO WARRANTY OR REPRESENTATION, EXPRESS OR IMPLIED, IS MADE AS TO THE CONDITION OF THE PROPERTY (OR PROPERTIES) REFERENCED HEREIN OR AS TO THE ACCURACY OR COMPLETENESS OF THE INFORMATION CONTAINED HEREIN, AND SAME IS SUBMITTED SUBJECT TO ERRORS, OMISSIONS, CHANGE OF PRICE, RENTAL OR OTHER CONDITIONS, WITHDRAWAL WITHOUT NOTICE, AND TO ANY SPECIAL LISTING CONDITIONS IMPOSED BY THE PROPERTY OWNER(S). ANY PROJECTIONS, OPINIONS OR ESTIMATES ARE SUBJECT TO UNCERTAINTY AND DO NOT SIGNIFY CURRENT OR FUTURE PROPERTY PERFORMANCE.

Independently Owned & Operated / A Member of the Cushman & Wakefield Alliance