



VIEW INSIDE

1600-1634  
E Grand Blvd

Mt Elliott St

E Grand Blvd



# 1600-1634 E. GRAND BLVD DETROIT, MICHIGAN

For more information, contact:

**PETER VANDERKAAY**  
(248) 359 3837  
[pvanderkaay@signatureassociates.com](mailto:pvanderkaay@signatureassociates.com)

**PAUL SAAD**  
(248) 359 0652  
[psaad@signatureassociates.com](mailto:psaad@signatureassociates.com)

**RICHARD PIFER**  
(248) 799 3158  
[rpifer@signatureassociates.com](mailto:rpifer@signatureassociates.com)



**SIGNATURE  
ASSOCIATES**  
KNOW SIGNATURE | KNOW RESULTS



# PROPERTY OVERVIEW

FOR SALE //

2-BUILDING PROPERTY  
TOTALING 184,738 SQ. FT.

## AVAILABILITY FOR LEASE

SUITE	SQ. FT.
102	4,855
104	2,184
xx	1,149
201	5,000
217	1,520
221-229	1,529
300H	750
303	1,218
304	1,006
305	1,897
4 <sup>TH</sup> FL	18,000

## 1600 E. GRAND BLVD – OFFICE

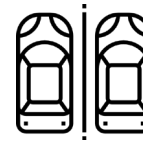
- 750-18,000 office square feet available for lease
- 81,229 total building square feet available for sale
- 4-story office building
- Turn-key office space
- 4<sup>th</sup> floor is available with great views
- Elevator access with additional full freight elevator
- Potential to add roof deck space
- Available warehouse units: 102 and 104

## 1634 E. GRAND BLVD – WAREHOUSE/INDUSTRIAL

- 104,259 total building square feet available for sale
- Secure gated parking
- Space includes grade level doors and truckwells



IMMEDIATE ACCESS  
TO I-94 & JUST  
EAST OF I-75



SECURED GATED  
PARKING



CLOSE TO NEW FCA PLANT,  
DAKKOTA INTEGRATED  
SYSTEMS AND GM  
DETROIT-HAMTRAMCK  
ASSEMBLY PLANT



# ENTIRE SITE FOR SALE // 1600-1634 E. GRAND BLVD



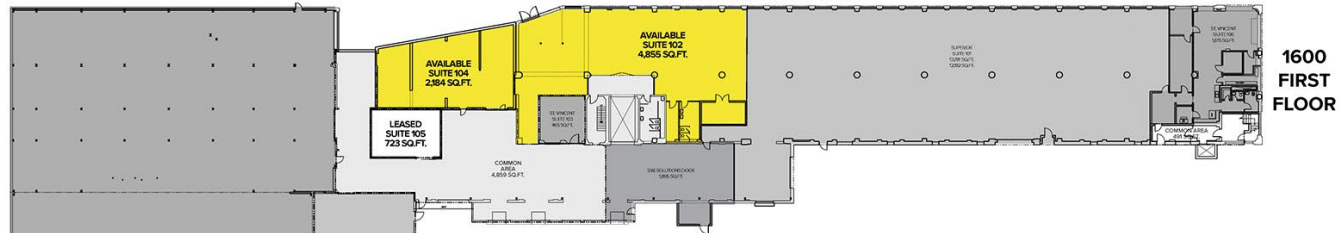
**1600-1634  
E Grand Blvd**

**E Grand Blvd**

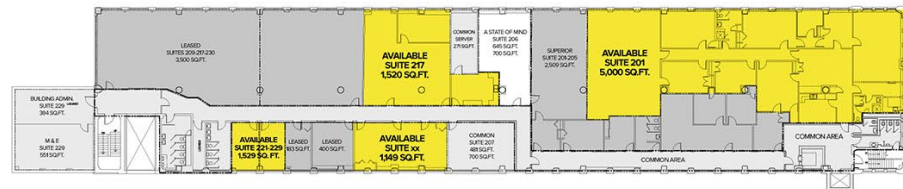




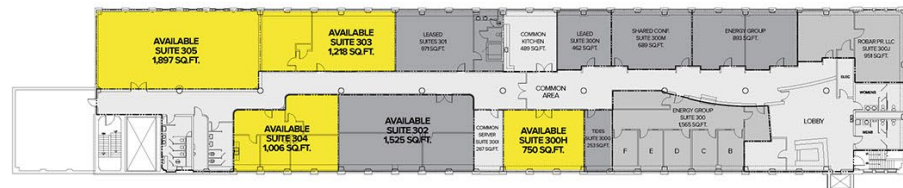
## 1600 FIRST FLOOR



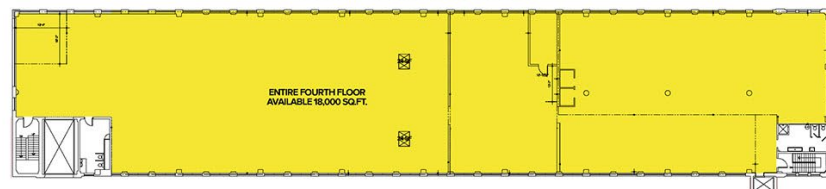
## 1600 SECOND FLOOR



1600 THIRD FLOOR



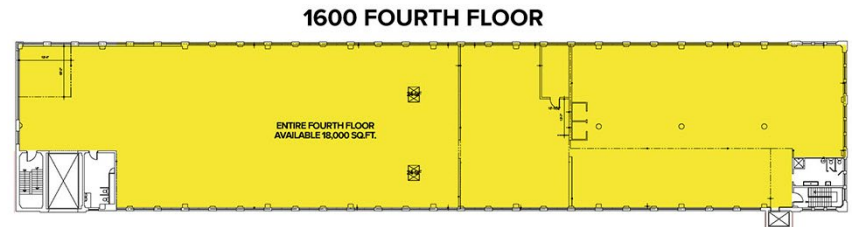
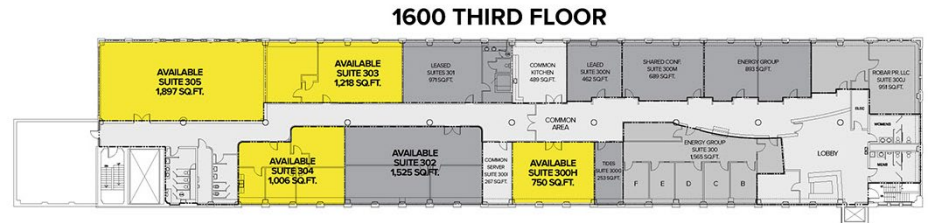
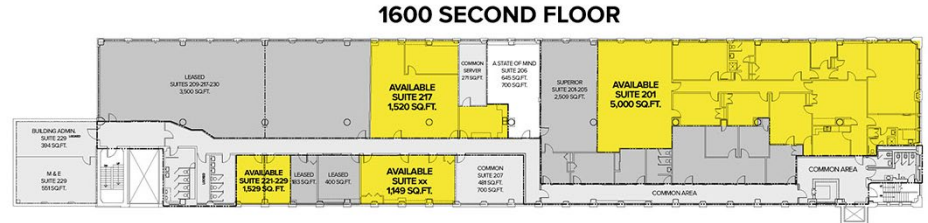
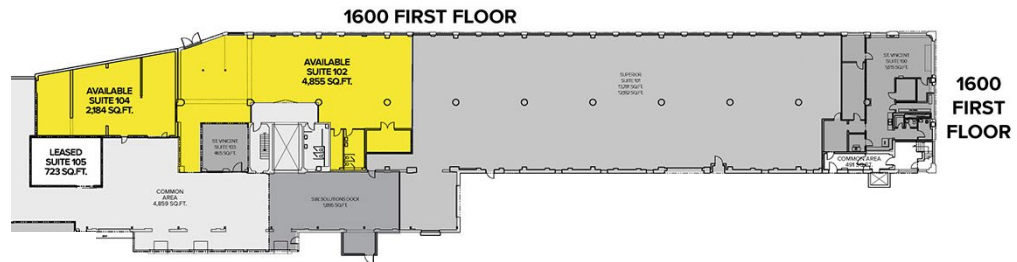
**1600 FOURTH FLOOR**



# OFFICE // 1600 E. GRAND BLVD



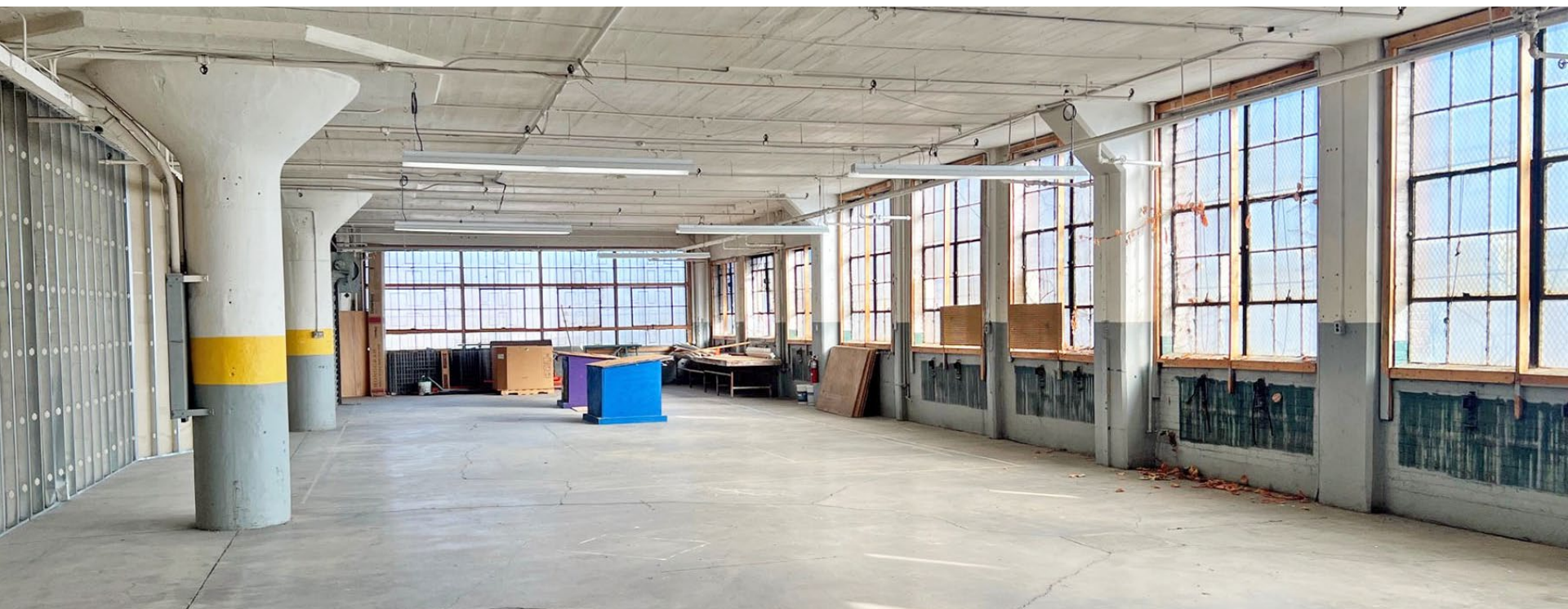
- 750-18,000 office square feet
- 80,479 total building square feet
- 4-story office building
- Turn-key office space
- Full 4th floor is available with great views
- Elevator access with additional full freight elevator
- Potential to add roof deck space









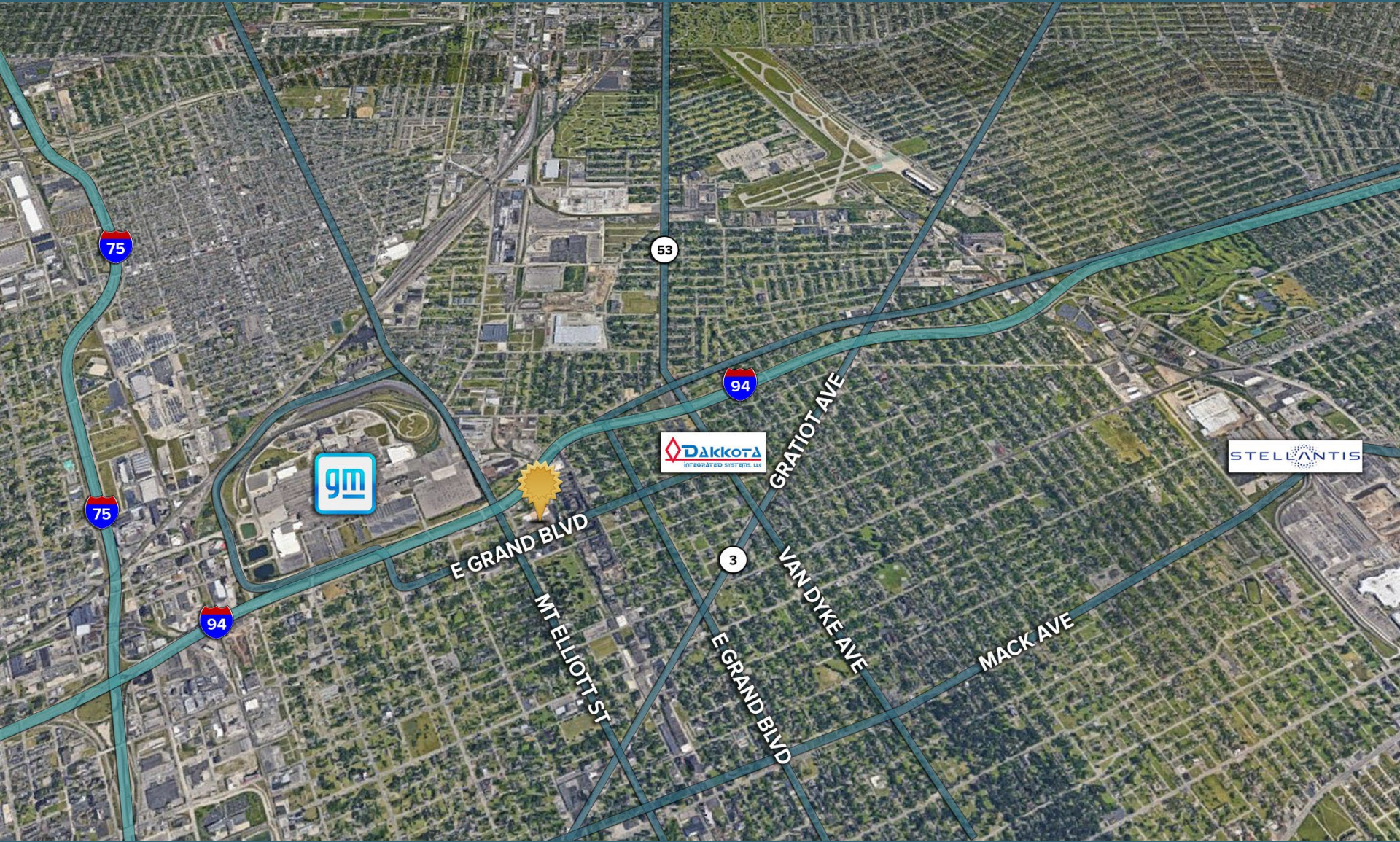






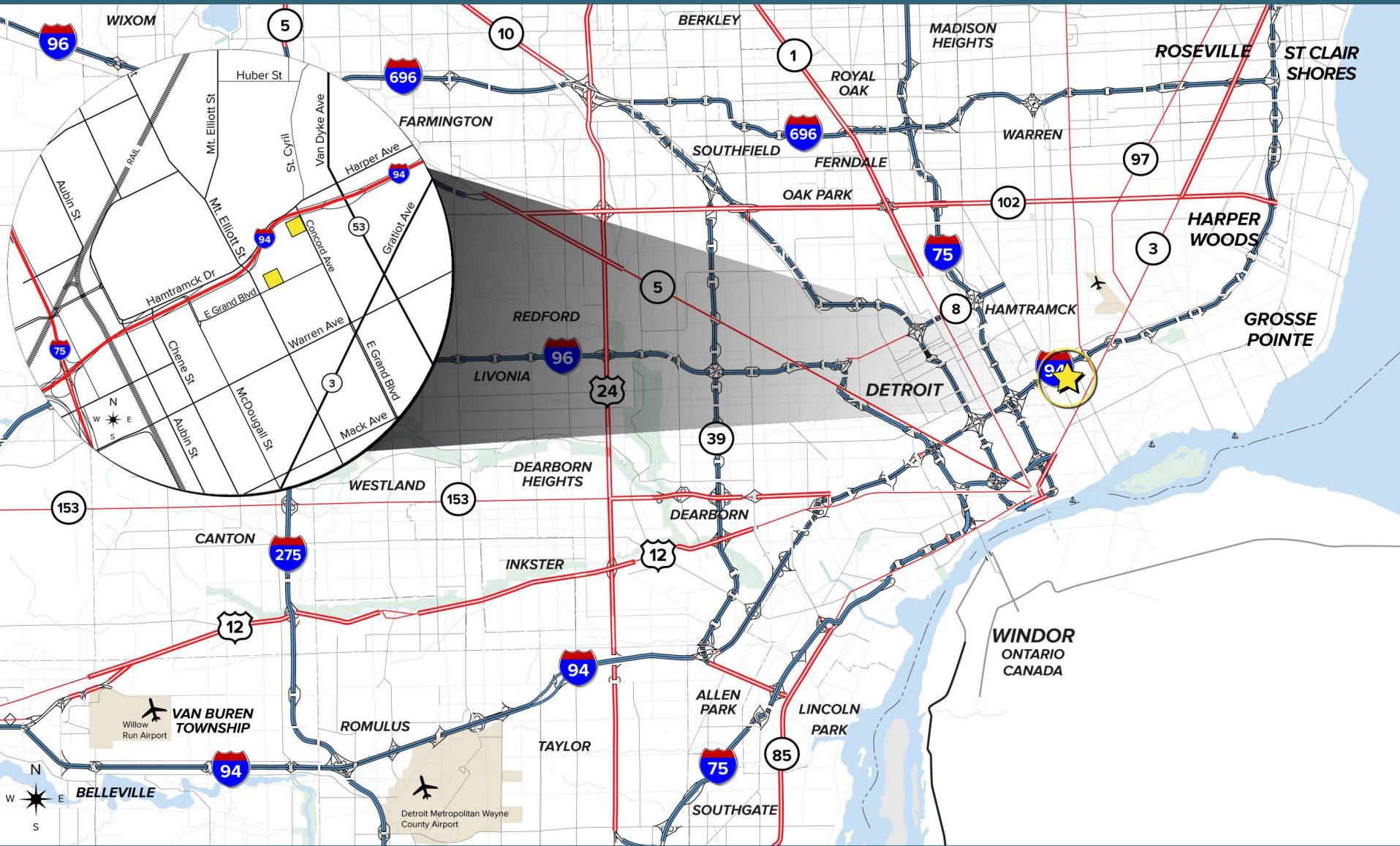


# CLOSE TO LARGE MANUFACTURERS





# EASY ACCESS TO ALL MAJOR FREEWAYS





For more information, contact:

**PETER VANDERKAAY**

(248) 359 3837

[pvanderkaay@signatureassociates.com](mailto:pvanderkaay@signatureassociates.com)

**PAUL SAAD**

(248) 359 0652

[psaad@signatureassociates.com](mailto:psaad@signatureassociates.com)

**RICHARD PIFER**

(248) 799 3158

[rpifer@signatureassociates.com](mailto:rpifer@signatureassociates.com)

**SIGNATURE ASSOCIATES**

One Towne Square, Suite 1200

Southfield, Michigan 48076

(248) 948 9000

[www.signatureassociates.com](http://www.signatureassociates.com)



**SIGNATURE  
ASSOCIATES**

KNOW SIGNATURE | KNOW RESULTS