

Available Medical Office Space for Lease

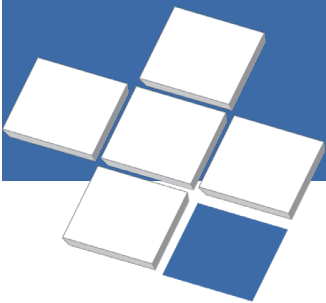
Columbia Medical Plaza

8614 East Mill Plain Blvd., Vancouver, WA 98664



For Leasing Information:
Lael Crompton
Director, Leasing
Phone: 858-794-1900
lcrompton@pmbres.com
www.pmbres.com
CA Lic. 01871298

- Four-Story 23,000 Square Foot Medical Office Building
- Within walking distance to PeaceHealth Southwest Medical Center
- Excellent visibility from East Mill Plain Blvd., a major thoroughfare
- Dedicated property management and maintenance staff
- Easy access to major freeways and public transportation

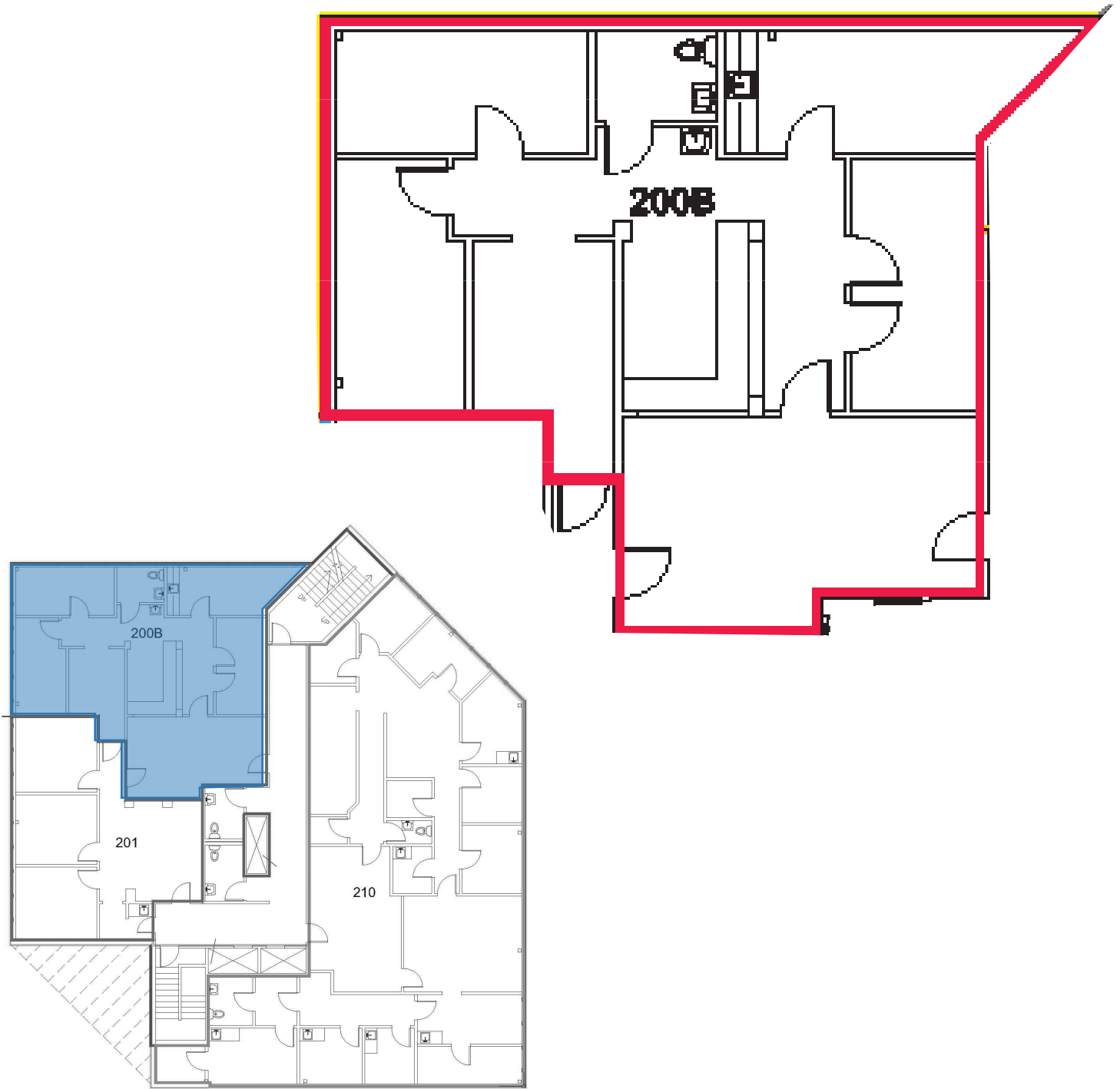


PMB
Real Estate Services
Real Estate Management Solutions for Healthcare



Second Floor Availability

Suite 200B: 1,517 RSF



For Leasing Information:
Lael Crompton | Director, Leasing
Phone: 858-794-1900 | lcrompton@pmbres.com
www.pmbres.com | CA Lic. 01871298

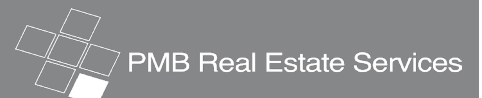
Third Floor Availability

Suite 300: 1,568 RSF

Band New Spec Suite: Available for Immediate Occupancy

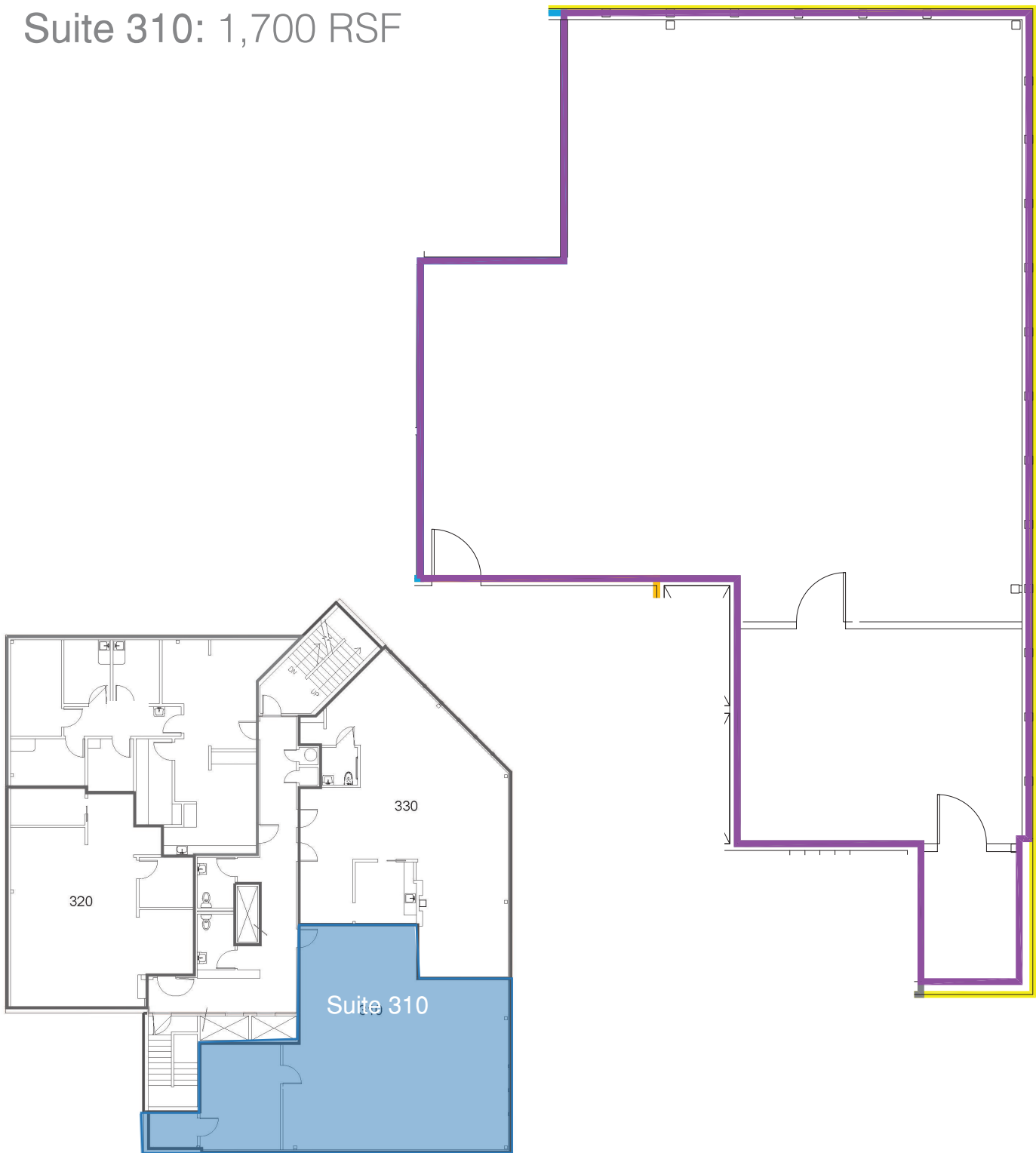


For Leasing Information:
Lael Crompton | Director, Leasing
Phone: 858-794-1900 | lcrompton@pmbres.com
www.pmbres.com | CA Lic. 01871298



Third Floor Availability

Suite 310: 1,700 RSF



For Leasing Information:
Lael Crompton | Director, Leasing
Phone: 858-794-1900 | lcrompton@pmbres.com
www.pmbres.com | CA Lic. 01871298