



studio

BY TISHMAN SPEYER

EXCEPTIONAL SPACES FOR
THE FUTURE OF FLEXIBLE WORK

Welcome to
Studio at 595 Market Street

YOURSTUDIO.COM

Flexibility and convenience in downtown San Francisco

The world's leading companies choose Studio by Tishman Speyer for flexible workspace with no compromises. Operating over one million square feet of business-class coworking, event space and move-in ready office suites, Studio is a pioneer in delivering holistic real estate solutions from long-term leases to desks on demand.

Studio at 595 Market is our 14,729 RSF location that features move-in ready office space with inspired interiors and elevated shared amenities. Enjoy access to meeting rooms and common areas to foster creativity, collaboration, productivity, and growth.

studio
BY TISHMAN SPEYER



Thoughtfully designed and programmed to meet the demands of today's modern workforce



Premium offices in
a vast range of
unit sizes



Flexible lease terms
and simple membership
agreements



Access to US
and Brazil
Studio portfolio



Daily cleaning, mail
and concierge-
type services



Coffee, snacks,
breakfasts and
happy hours



A variety of
medium/large
size meeting
rooms



Getaway to SoMa

Designed with connectivity front and center, just about everything feels within reach at this South of Market location. Walk, drive, take the bus, ride the train, or cruise in to work on one of two nearby bike paths.

1. Salesforce Transit Center
2. Bart & Muni Station
3. Muni Station – Ferry Plaza
4. Golden Gate Ferry Terminal



All the comforts of home, right where you work

Welcome each workday from 595 Market's sleek modern lobby with soft seating, contemporary art, and unique lighting design. While onsite, you can refuel at Peet's Coffee or relax and grab a bite at Louie's to power you through the day.

Our building is the perfect blend of commerce and culture—where the businesses, restaurants, shops, and entertainment all add up to make San Francisco an unforgettable experience.

studio
BY TISHMAN SPEYER



Studio: 10th Floor



OFFICES

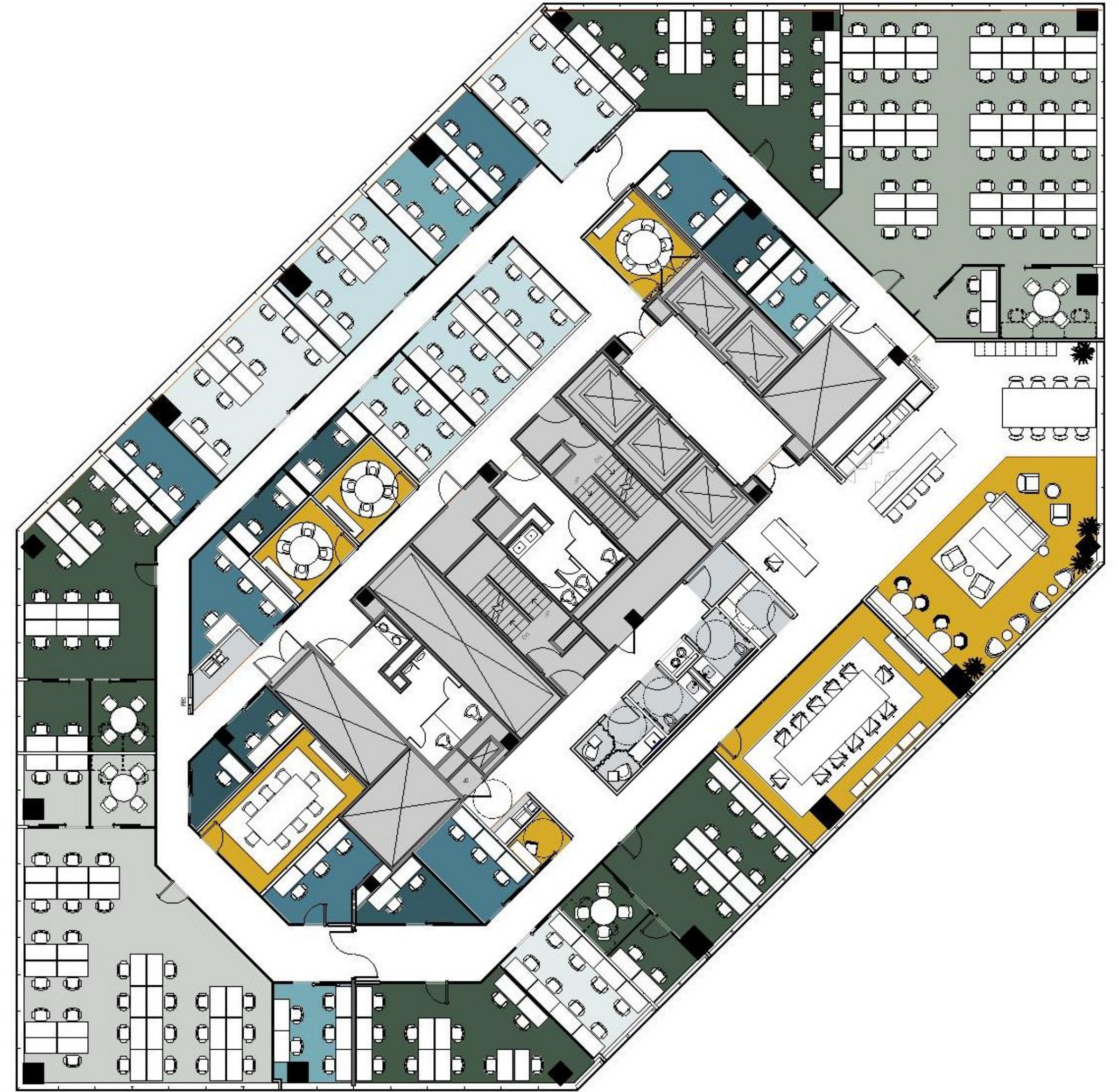
1 – 39 desks

As low as \$819/desk.

AMENITIES

Hot Desk
Virtual Office
Meeting Rooms
Phone Booths

\$500/mo.
\$98/mo.
5 total.
3 total.



The benefits of being a division of Tishman Speyer

For more than 40 years, Tishman Speyer has embodied dedicated expertise and bold vision, building a culture of trust, while growing far beyond the remit of a traditional commercial real estate company.

Tishman Speyer brings industry excellence while offering best-in-class spaces in the most prestigious properties around the world. Studio members are granted access to a robust portfolio offering, with unparalleled operations excellence and unrivaled hospitality that yields partnership for the long term.

Your Studio membership places you within an integrated ecosystem of opportunity, where all your business needs are met with the utmost flexibility, security, and scalability.

We remain your partners for growth and guidance from your first day with us and into our shared futures.

studio
BY TISHMAN SPEYER





ZO
BY TISHMAN SPEYER

Inspiring environments Connected communities

WHAT IS ZO?

Inspired by the Greek word for "life," ZO is Tishman Speyer's global amenity network, providing members with access to our world-class spaces, services and experiences. ZO connects our members all over the world to a vibrant and inspiring community that enriches personal and professional networks, fosters collaboration and helps reimagine the role of the workplace beyond the four walls of an office.

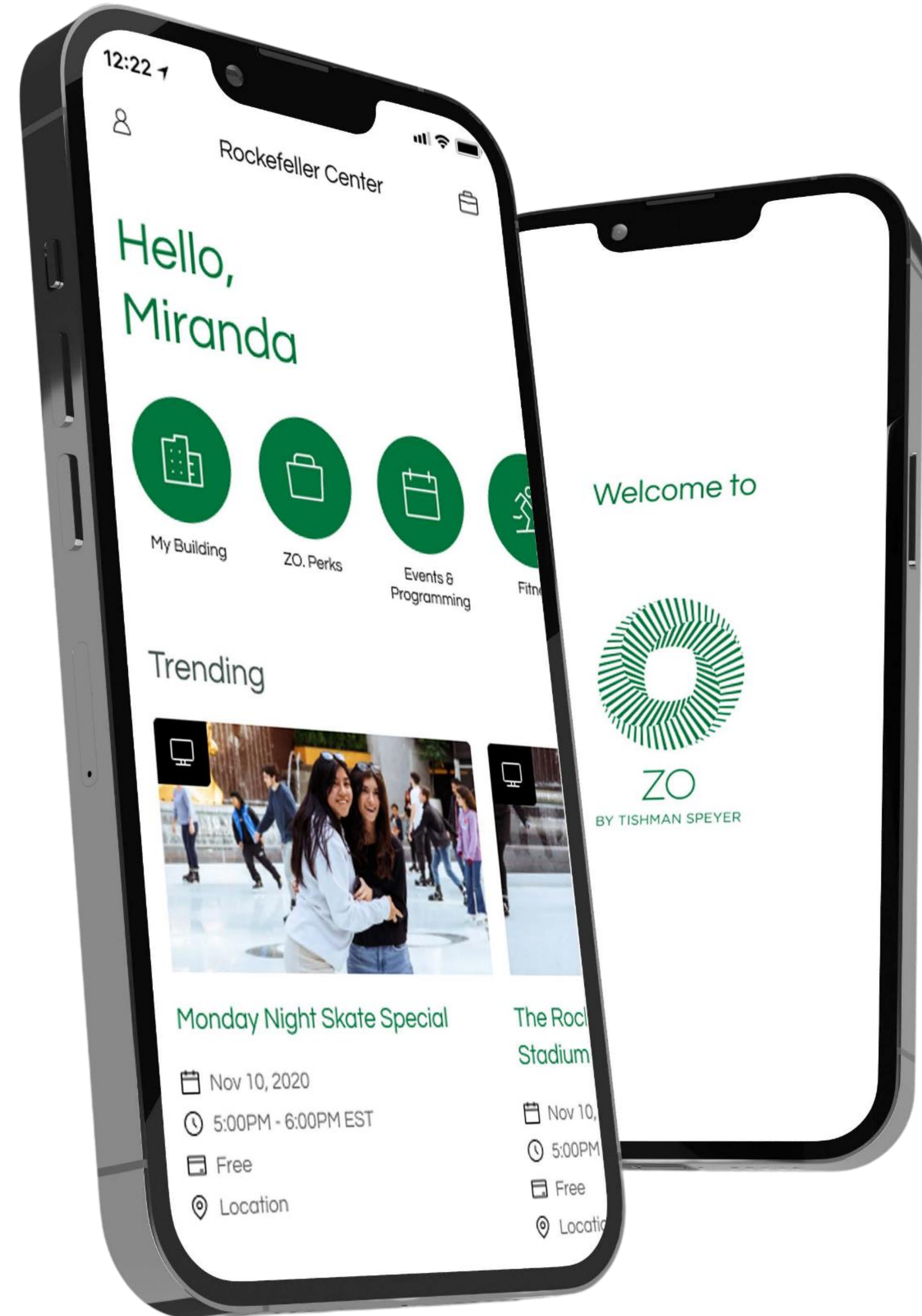
ZO BENEFITS

As a ZO member, you'll have access to a variety of offerings, such as:

PROGRAMMING
GLOBAL ACCESS
SPACES

PERKS
SERVICES

studio
BY TISHMAN SPEYER





CONTACT US

Jonathan Zoucha
jzoucha@tishmanspeyer.com
415.308.8249

Michelle Ent
ment@yourstudio.com
628.230.0539

Joshua Barton
jbarton@tishmanspeyer.com
847.702.6166

595 Market Street
10th Floor
San Francisco, CA 94105

YOURSTUDIO.COM