

Oxford Companies
734.665.6500
oxfordcompanies.com



Integrated
Real Estate
Services



Retail Property For Lease

Liberty Square

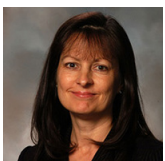
255 E. Liberty Street, Suite 213

Ann Arbor, MI 48104

1,470 SF

\$18.25 SF/yr (MG)

Available



Contact Karen O'Neil for
more information or to
schedule a tour.

Office: 734.665.6500
Cell: 734.323.4263
koneil@oxfordcompanies.com

Liberty Square
255 E. Liberty Street Suite 213
Ann Arbor, MI 48104



Integrated
Real Estate
Services



OFFERING SUMMARY

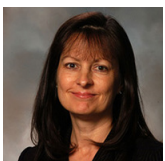
Lease Rate:	\$18.25 SF/yr (MG)
Short Term OXIO Rate:	\$3,200/mo
Building Size:	24,319 SF
Available SF:	1,470 SF
Lot Size:	0.35 Acres
Zoning:	D1

PROPERTY OVERVIEW

Liberty Plaza is a fantastic location for businesses looking to relocate to downtown Ann Arbor. Lower level retail and second-story office spaces in this building are perfect for organizations that want high visibility and a steady stream of passersby. Liberty Plaza's brick exterior and abundance of tall windows give an air of charm and uniqueness. Because of its downtown Ann Arbor location, Liberty Plaza seamlessly connects you to the pulse of the area's world-class bars and restaurants.

PROPERTY HIGHLIGHTS

- Located in central downtown Ann Arbor, steps from the University of Michigan campus
- Highly trafficked street and sidewalk offers great exposure
- Upper level office space with fantastic views
- Lower level retail space with high visibility signage and accessibility
- Onsite parking available
- Easy access to I-94, US-23, and M-14
- Neighbored by popular restaurants and retail shops
- Underground and above-ground parking structures one block away
- Streamlined leasing experience for convenience and ease
- Professionally managed with 24/7 on-call emergency maintenance



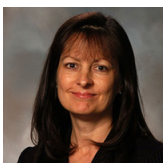
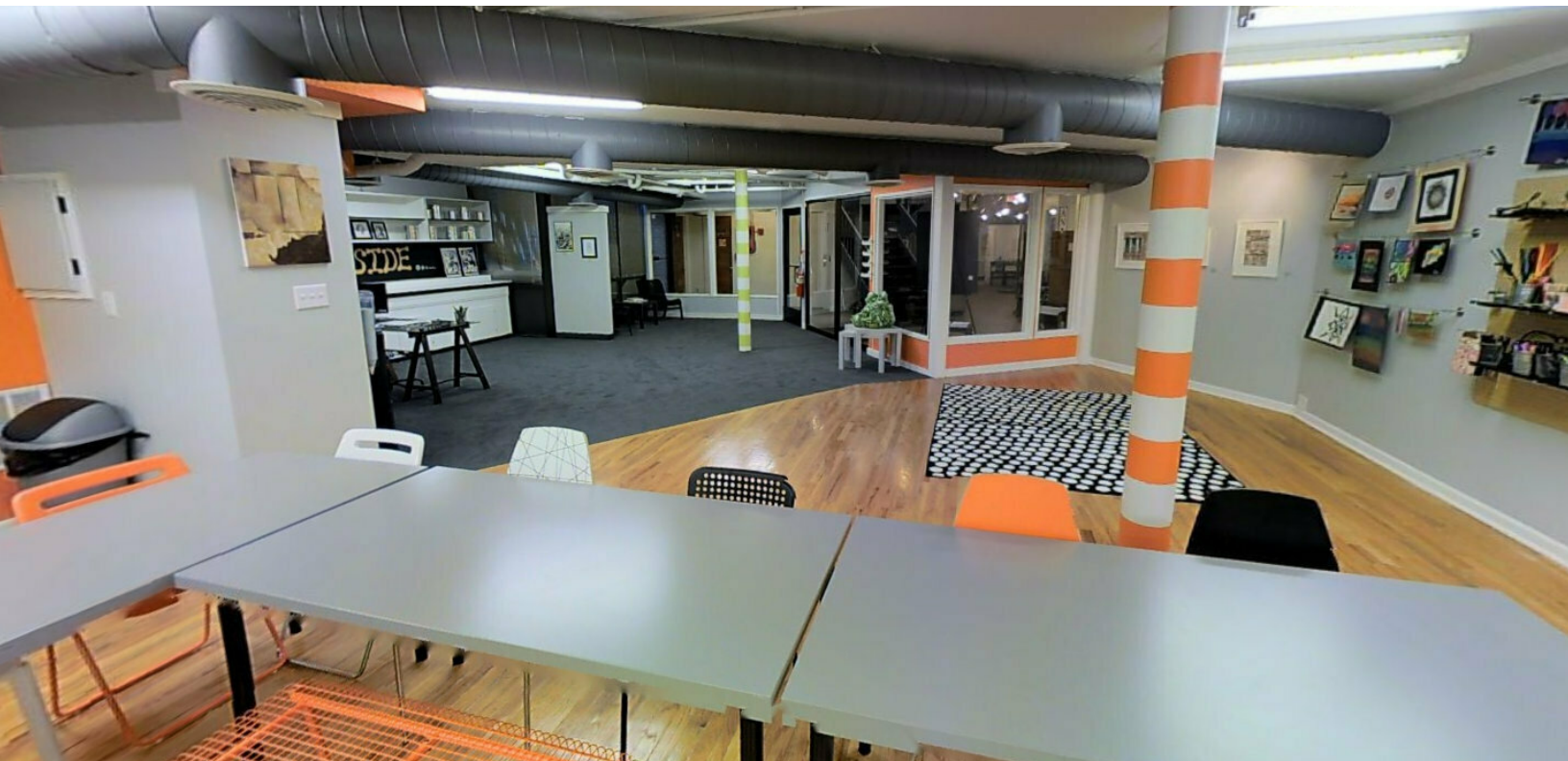
Contact Karen O'Neil for more information or to schedule a tour.

Office: 734.665.6500
Cell: 734.323.4263
koneil@oxfordcompanies.com

Liberty Square
255 E. Liberty Street Suite 213
Ann Arbor, MI 48104



Integrated
Real Estate
Services



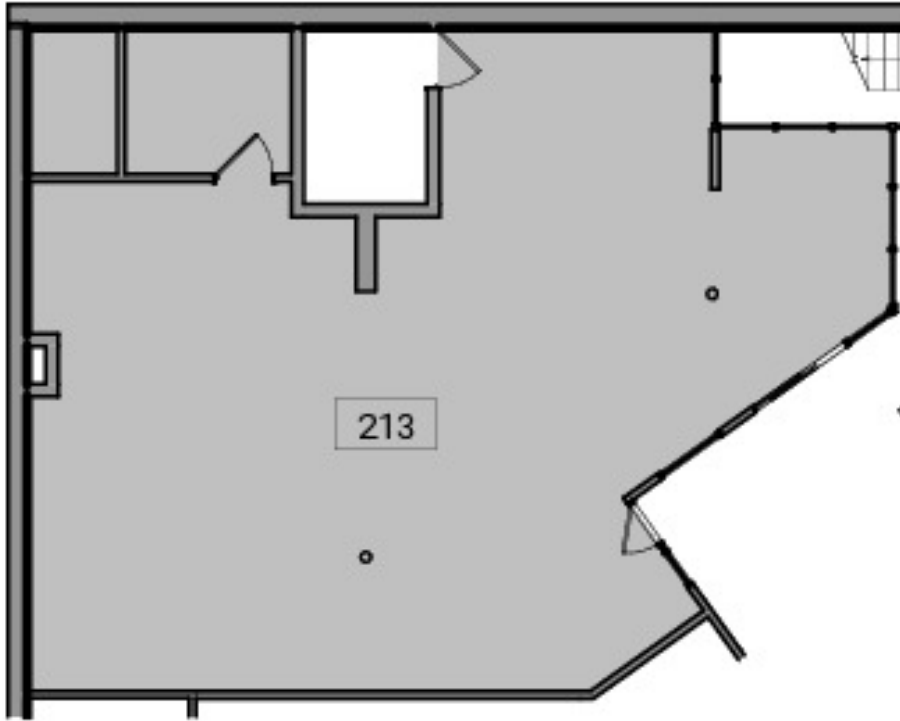
Contact Karen O'Neil for
more information or to
schedule a tour.

Office: 734.665.6500
Cell: 734.323.4263
koneil@oxfordcompanies.com

Liberty Square
255 E. Liberty Street Suite 213
Ann Arbor, MI 48104



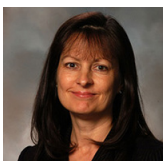
Integrated
Real Estate
Services



2 Suite 213 - Partial Basement Existing Floor Plan
LA213 5'-4" 10'-8" 21'-4" 3/32" = 1'-0"



1 Key Plan - Basement
LA213 50' 100' 1" = 50'-0"



Contact Karen O'Neil for more information or to schedule a tour.

Office: 734.665.6500
Cell: 734.323.4263
koneil@oxfordcompanies.com

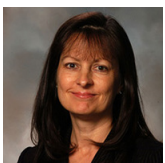
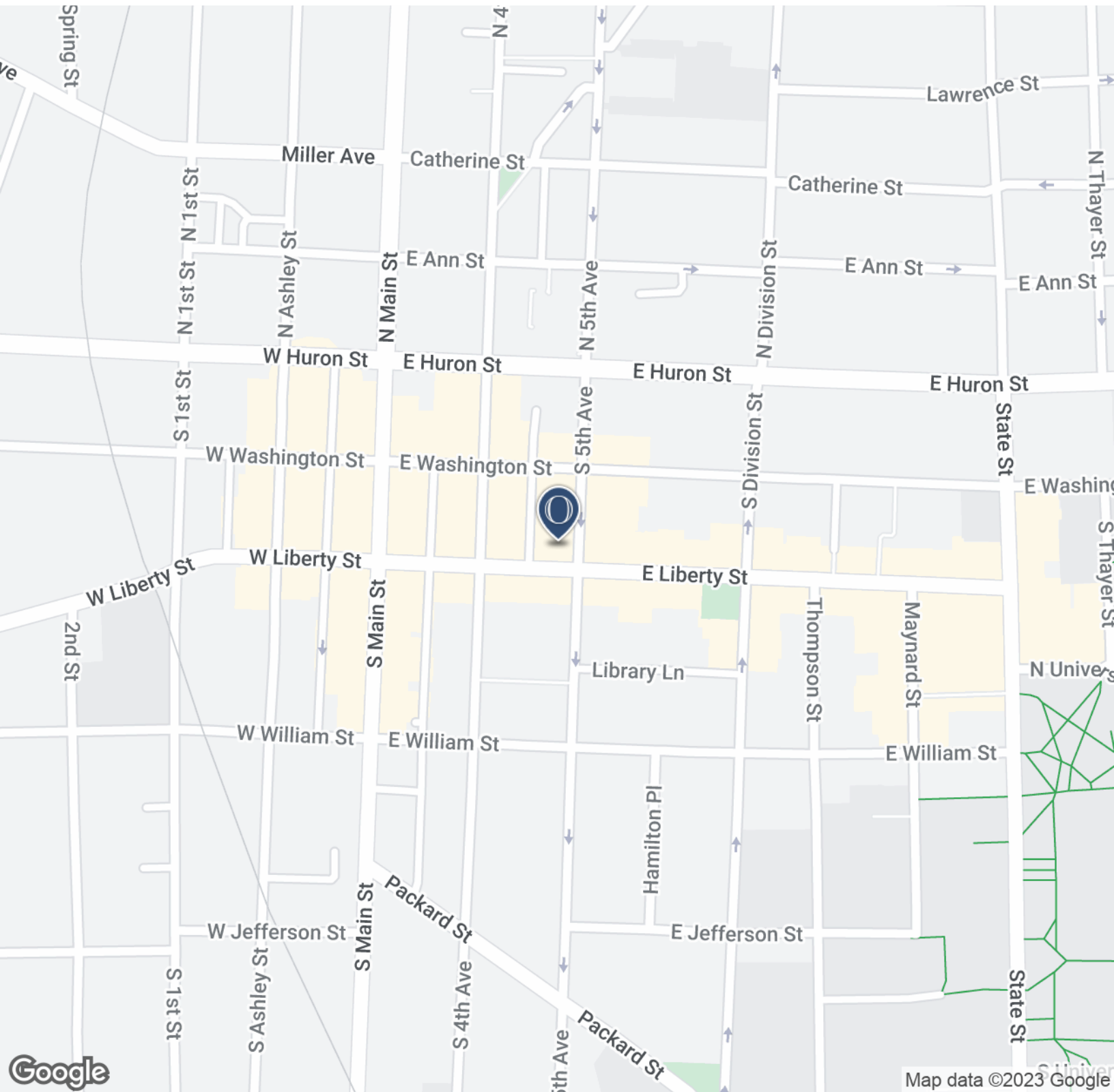
Liberty Square

255 E. Liberty Street Suite 213

Ann Arbor, MI 48104



Integrated
Real Estate
Services



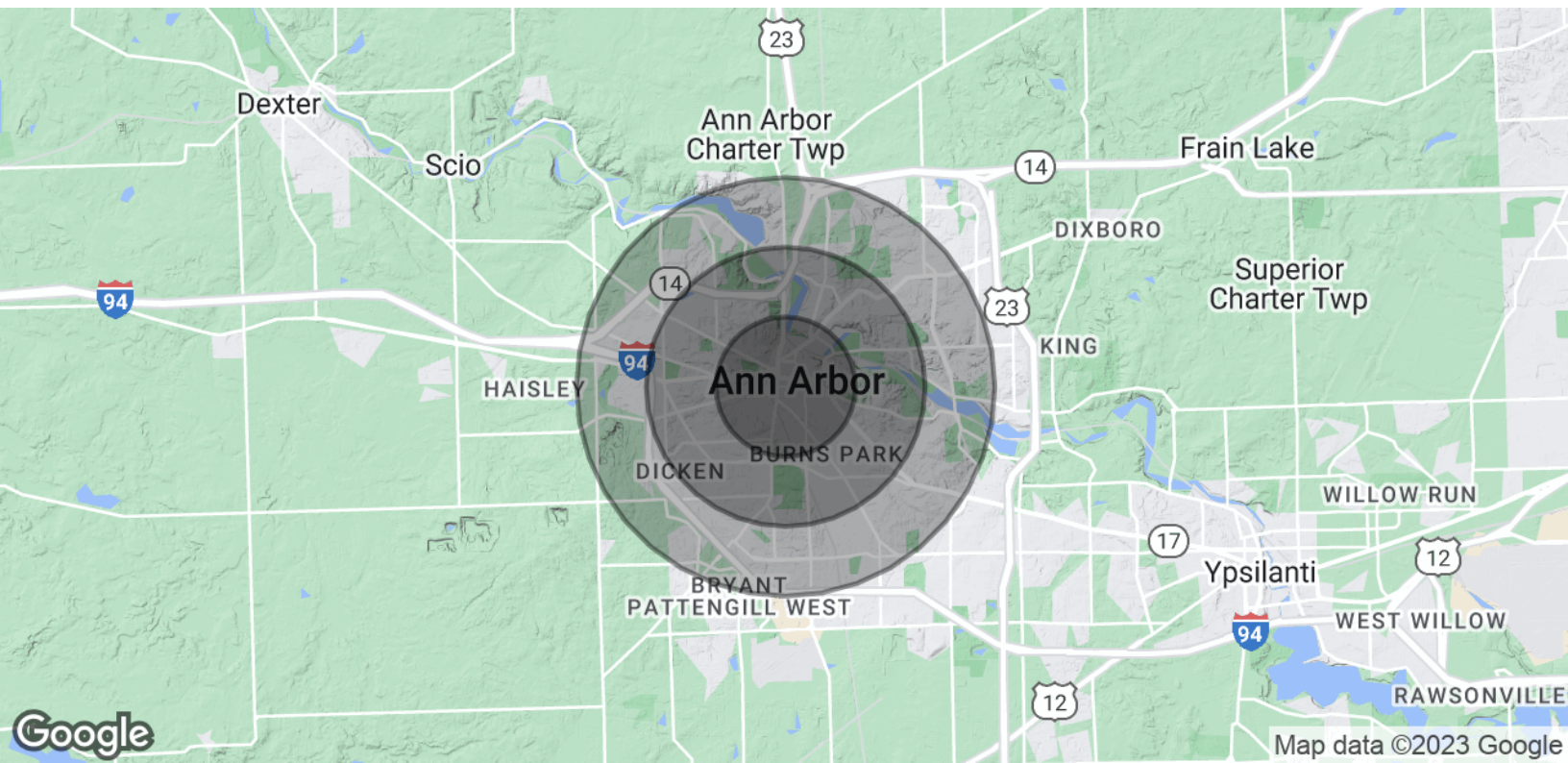
Contact Karen O'Neil for
more information or to
schedule a tour.

Office: 734.665.6500
Cell: 734.323.4263
koneil@oxfordcompanies.com

Liberty Square
 255 E. Liberty Street Suite 213
 Ann Arbor, MI 48104

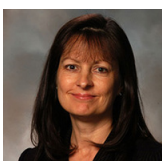


Integrated
 Real Estate
 Services



POPULATION	1 MILE	2 MILES	3 MILES
Total Population	27,704	73,511	115,567
Average age	24.8	28.2	30.8
Average age (Male)	24.9	27.9	30.2
Average age (Female)	24.7	28.5	31.2
HOUSEHOLDS & INCOME	1 MILE	2 MILES	3 MILES
Total households	10,000	25,827	43,256
# of persons per HH	2.8	2.8	2.7
Average HH income	\$48,285	\$67,205	\$73,686
Average house value	\$314,817	\$318,903	\$323,361

* Demographic data derived from 2020 ACS - US Census



Contact Karen O'Neil for more information or to schedule a tour.

Office: 734.665.6500
 Cell: 734.323.4263
 koneil@oxfordcompanies.com