

SHEPHERD PARK

112 SURFACE
PARKING SPACES

7820 GEORGIA AVENUE NW
WASHINGTON, DC

 TARGET



GEORGIA AVENUE - 33,220 ADT

2,229 SF
PRIME CORNER AVAILABLE
AT LIGHTED INTERSECTION

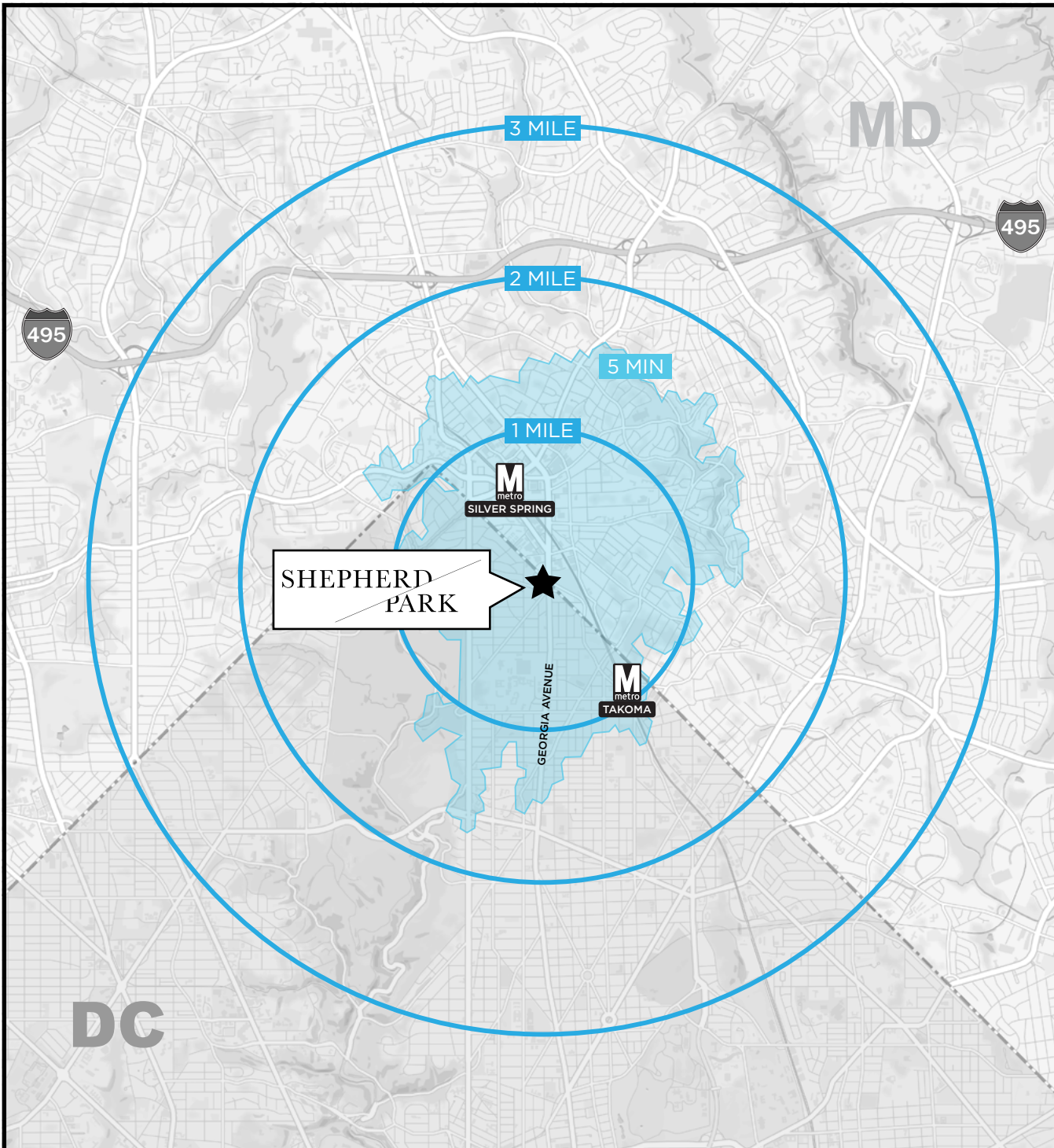
SHEPHERD

CHILDREN'S ACADEMY
NOW OPEN!



NOW OPEN!

klnb



DEMOGRAPHICS



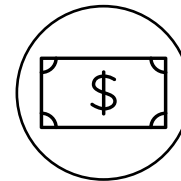
Population

DRIVE TIMES

5 MIN	10 MIN	15 MIN
52,842	203,851	566,181

MILE RADIUS

1 MILE	3 MILE	5 MILE
35,947	258,988	708,564



Avg. HH Income

DRIVE TIMES

5 MIN	10 MIN	15 MIN
\$131,794	\$160,915	\$161,632

MILE RADIUS

1 MILE	3 MILE	5 MILE
\$139,072	\$154,955	\$110,662



Daytime Population

DRIVE TIMES

5 MIN	10 MIN	15 MIN
56,821	179,312	562,820

MILE RADIUS

1 MILE	3 MILE	5 MILE
42,603	214,199	719,227



SILVER SPRING METRO

2,168 ADR

TAKOMA METRO

4,242 ADR

MARYLAND

EASTERN AVENUE

 **Holiday Inn**

CULTURAL ARTS CENTER OF MONTGOMERY COLLEGE
Theatre 1 - 500 seats
Theatre 2 - 116 seats
Dance Studio
Art Gallery

  **CAFRITZ FOUNDATION ARTS CENTER**

 **HOLY CROSS HEALTH CENTER**
Clients Served - 240,000+
Employees - 4,200
Licensed Hospital Beds - 570

 **MONTGOMERY COLLEGE TAKOMA/SILVER SPRING CAMPUS**
7,563 Students
1,685 Faculty


KALMIA STREET NW

SHEPHERD PARK
 **TARGET NOW OPEN!**

BLAIR ROAD

 11,360
[2021 ADT]

ALASKA AVENUE NW

 8,458
[2021 ADT]

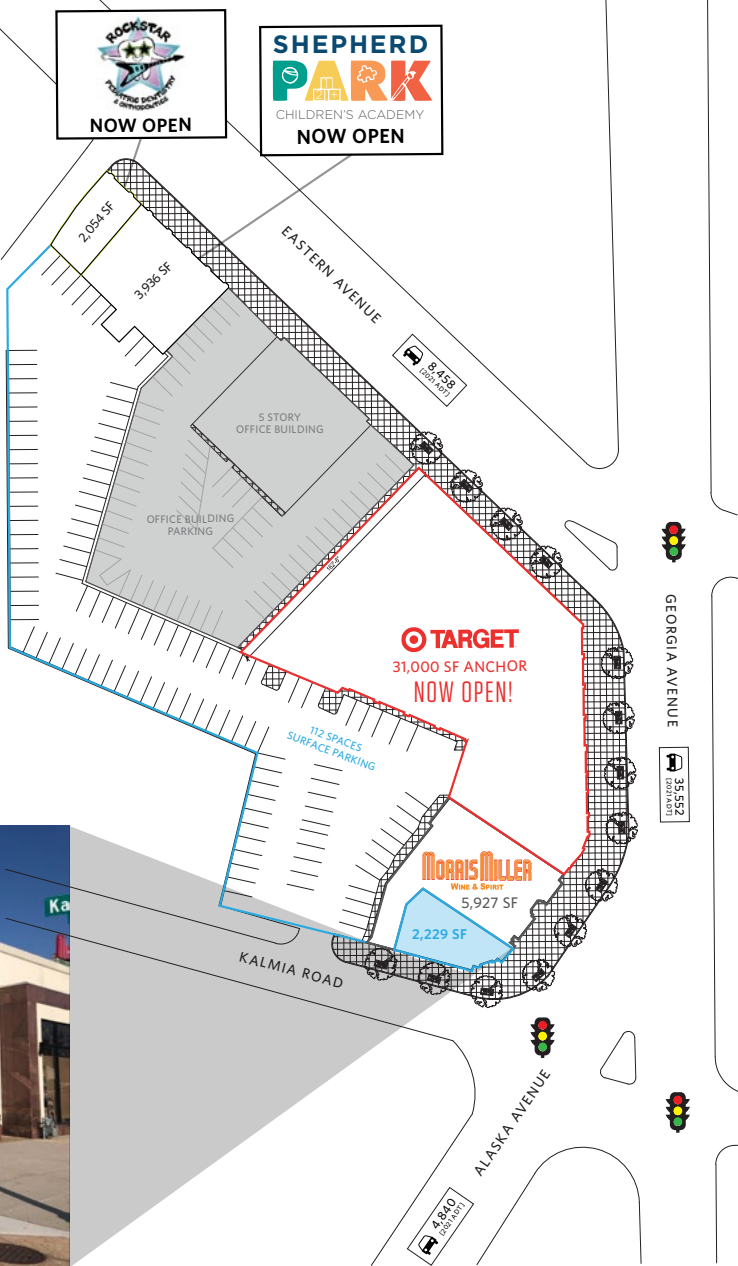
 4,840
[2021 ADT]

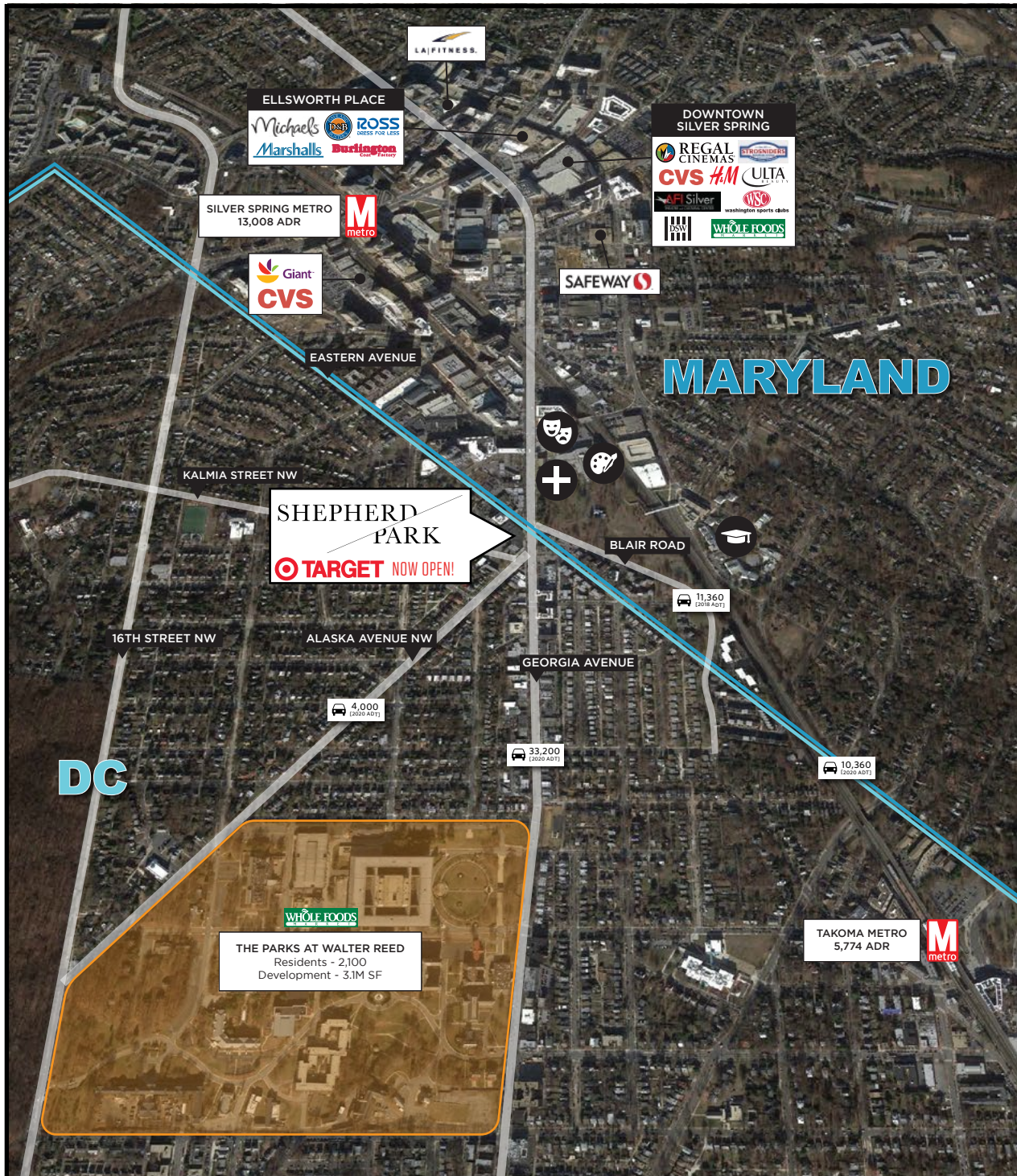
GEORGIA AVENUE

 35,552
[2021 ADT]

DC

SITE PLAN - SHEPHERD PARK





OVERVIEW

- Prime 2,229 SF endcap space available fronting Georgia Ave with surface parking
- Located at nexus of several major thoroughfares between Silver Spring, MD and Northwest, DC
- Close proximity to Downtown Silver Spring and 66 acre Walter Reed Re-development
- Affluent under-served market



SHEPHERD PARK

7820 GEORGIA AVENUE NW
WASHINGTON, DC

MATT SKALET

mskalet@klnb.com | 202.420.7775

BEN BECKER

bbecker@klnb.com | 202.420.7773

LINDSEY ST. MAXENS

lstmaxens@klnb.com | 202.420.7769



klnb

While we have no reason to doubt the accuracy of any of the information supplied, we cannot, and do not, guarantee its accuracy. All information should be independently verified prior to a purchase or lease of the property. We are not responsible for errors, omissions, misuse, or misinterpretation of information contained herein and make no warranty of any kind, express or implied, with respect to the property or any other matters

**Douglas
Development**
CORPORATION