

# 3310 W BIG BEAVER SHEFFIELD OFFICE PARK



**FOR LEASE**

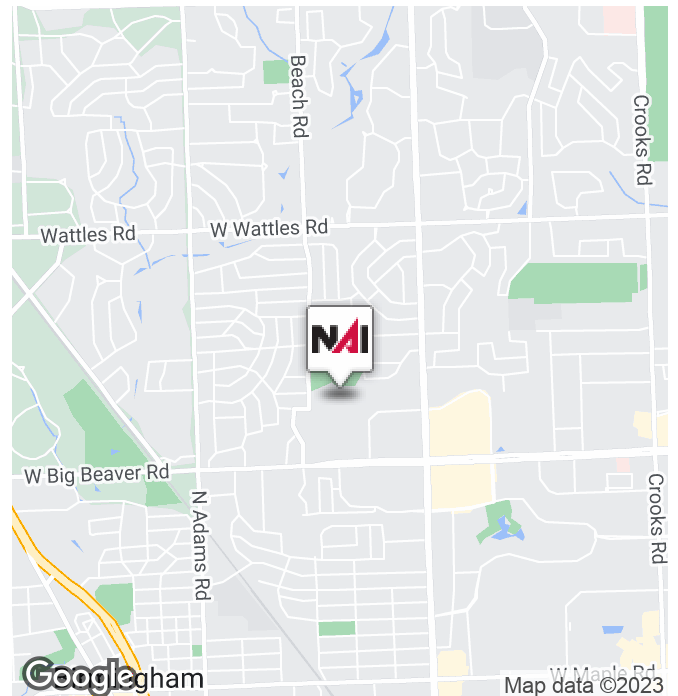


## Class A Office

Troy, Michigan 48084

### Property Highlights

- Class A Office Complex
- New Lobby and Common Areas
- Located on Big Beaver in the Heart of Troy
- Manhattan Deli/Starbucks
- Building Conference Center
- Fitness Center
- Bike Rental
- Outdoor Green Space
- On-Site Management
- After-Hours Security
- 24/7 Access
- Abundant Parking
- Easy Access to I-75, Woodward Ave and Telegraph Road
- Seconds from Somerset Mall and Downtown Birmingham



**NAI Farbman**

Commercial Real Estate Services, Worldwide.

[www.naifarbman.com](http://www.naifarbman.com)

**Lesley Gutman**

Senior Vice President | 248.860.6800

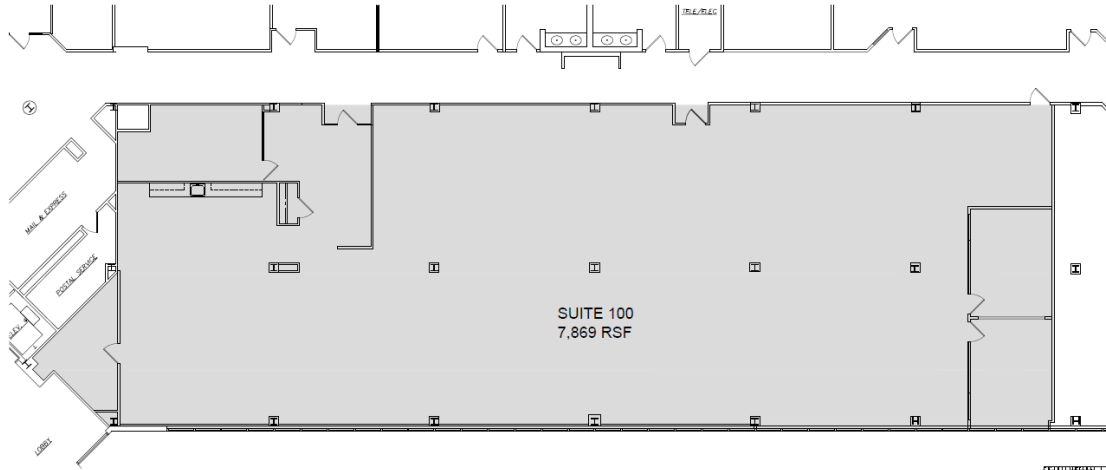
[lgutman@farbman.com](mailto:lgutman@farbman.com)

NO WARRANTY, EXPRESS OR IMPLIED, IS MADE AS TO THE ACCURACY OF THE INFORMATION CONTAINED HEREIN. THIS INFORMATION IS SUBMITTED SUBJECT TO ERRORS, OMISSIONS, CHANGE OF PRICE, RENTAL OR OTHER CONDITIONS, WITHDRAWAL WITHOUT NOTICE, AND IS SUBJECT TO ANY SPECIAL LISTING CONDITIONS IMPOSED BY OUR PRINCIPALS. COOPERATING BROKERS, BUYERS, TENANTS AND OTHER PARTIES WHO RECEIVE THIS DOCUMENT SHOULD NOT RELY ON IT, BUT SHOULD USE IT AS A STARTING POINT OF ANALYSIS, AND SHOULD INDEPENDENTLY CONFIRM THE ACCURACY OF THE INFORMATION CONTAINED HEREIN THROUGH A DUE DILIGENCE REVIEW OF THE BOOKS, RECORDS, FILES AND DOCUMENTS THAT CONSTITUTE RELIABLE SOURCES OF THE INFORMATION DESCRIBED HEREIN. LOGOS ARE FOR IDENTIFICATION PURPOSES ONLY AND MAY BE TRADEMARKS OF THEIR RESPECTIVE COMPANIES. NAI Farbman, INC. CA BRE LIC. #01990696.

# 3310 W BIG BEAVER SHEFFIELD OFFICE PARK



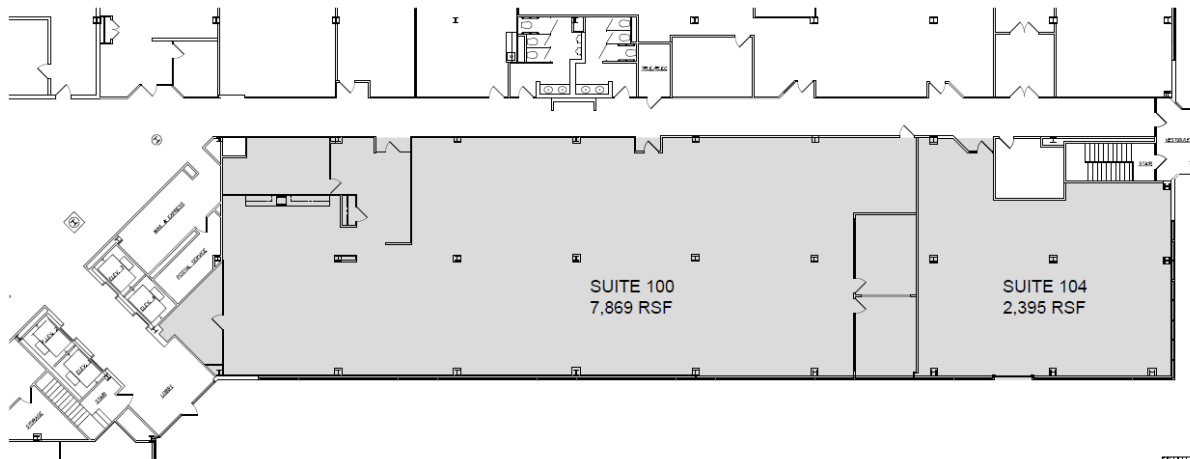
## FOR LEASE



SHEFFIELD OFFICE PARK  
3310 W. BIG BEAVER RD., SUITE 100  
2-21-23 SCALE: 3/32"=1'-0"

PREPARED BY METRO CAD GROUP

FOR LEASING  
INFORMATION CALL  
LESLEY GUTMAN  
(248) 353-0500



SHEFFIELD OFFICE PARK  
3310 W. BIG BEAVER RD., SUITE 100 & 104  
2-21-23 SCALE: 3/32"=1'-0"

PREPARED BY METRO CAD GROUP

FOR LEASING  
INFORMATION CALL  
LESLEY GUTMAN  
(248) 353-0500



Commercial Real Estate Services, Worldwide.  
www.naifarbman.com

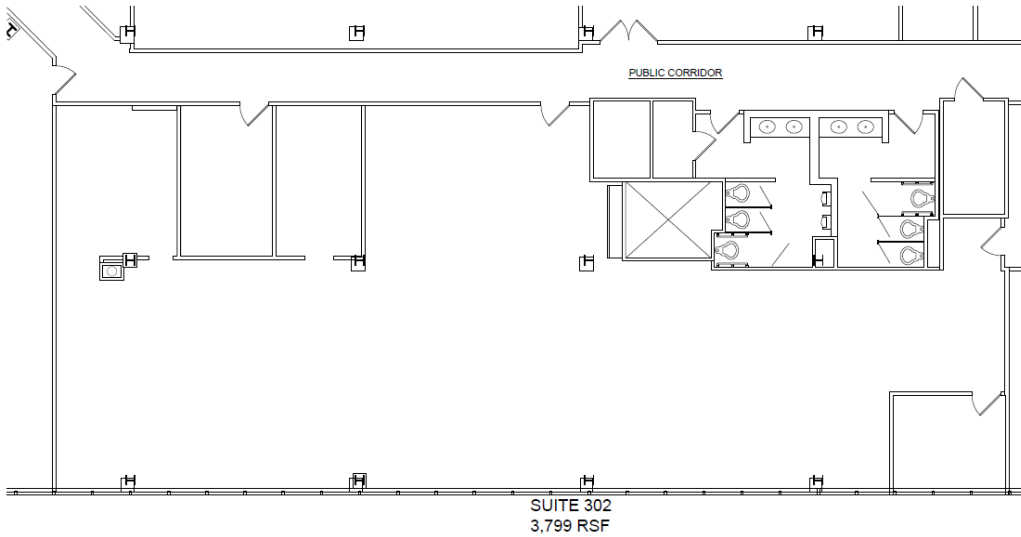
**Lesley Gutman**  
Senior Vice President | 248.860.6800  
lgutman@farbman.com

NO WARRANTY, EXPRESS OR IMPLIED, IS MADE AS TO THE ACCURACY OF THE INFORMATION CONTAINED HEREIN. THIS INFORMATION IS SUBMITTED SUBJECT TO ERRORS, OMISSIONS, CHANGE OF PRICE, RENTAL OR OTHER CONDITIONS, WITHDRAWAL WITHOUT NOTICE, AND IS SUBJECT TO ANY SPECIAL LISTING CONDITIONS IMPOSED BY OUR PRINCIPALS. COOPERATING BROKERS, BUYERS, TENANTS AND OTHER PARTIES WHO RECEIVE THIS DOCUMENT SHOULD NOT RELY ON IT, BUT SHOULD USE IT AS A STARTING POINT OF ANALYSIS, AND SHOULD INDEPENDENTLY CONFIRM THE ACCURACY OF THE INFORMATION CONTAINED HEREIN THROUGH A DUE DILIGENCE REVIEW OF THE BOOKS, RECORDS, FILES AND DOCUMENTS THAT CONSTITUTE RELIABLE SOURCES OF THE INFORMATION DESCRIBED HEREIN. LOGOS ARE FOR IDENTIFICATION PURPOSES ONLY AND MAY BE TRADEMARKS OF THEIR RESPECTIVE COMPANIES. NAI Farbman, INC. CA BRE LIC. #01990696.

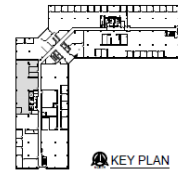
# 3310 W BIG BEAVER SHEFFIELD OFFICE PARK



## FOR LEASE



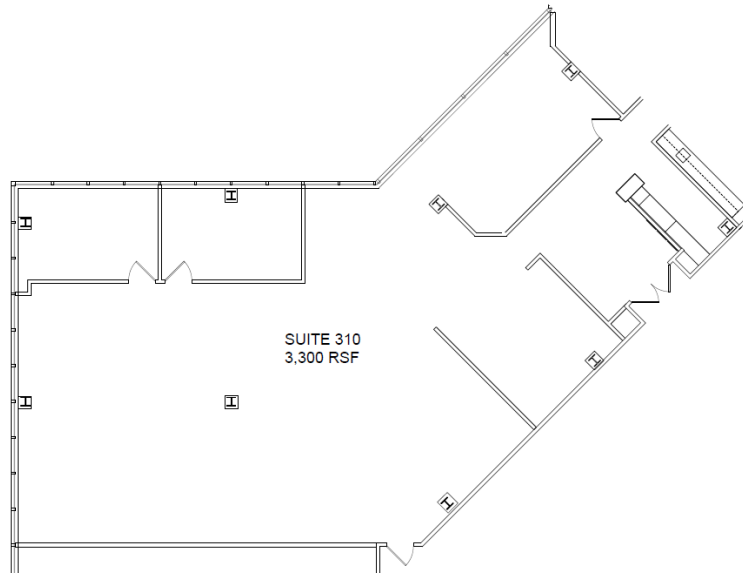
**SHEFFIELD OFFICE PARK**  
**3310 W. BIG BEAVER RD., SUITE 302**  
 NORTH 03-29-23 SCALE: 1/8"=1'-0"



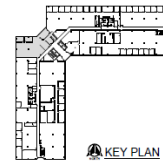
FOR LEASING  
 INFORMATION CALL  
 LESLEY GUTMAN  
 (248) 353-0500



PREPARED BY METRO CAD GROUP



**SHEFFIELD OFFICE PARK**  
**3310 W. BIG BEAVER RD., SUITE 310**  
 NORTH 03-29-23 SCALE: 1/8"=1'-0"



FOR LEASING  
 INFORMATION CALL  
 LESLEY GUTMAN  
 (248) 353-0500



PREPARED BY METRO CAD GROUP



Commercial Real Estate Services, Worldwide.  
[www.naifarbman.com](http://www.naifarbman.com)

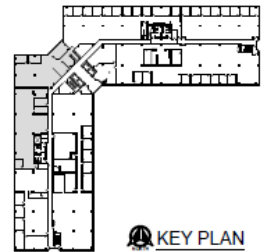
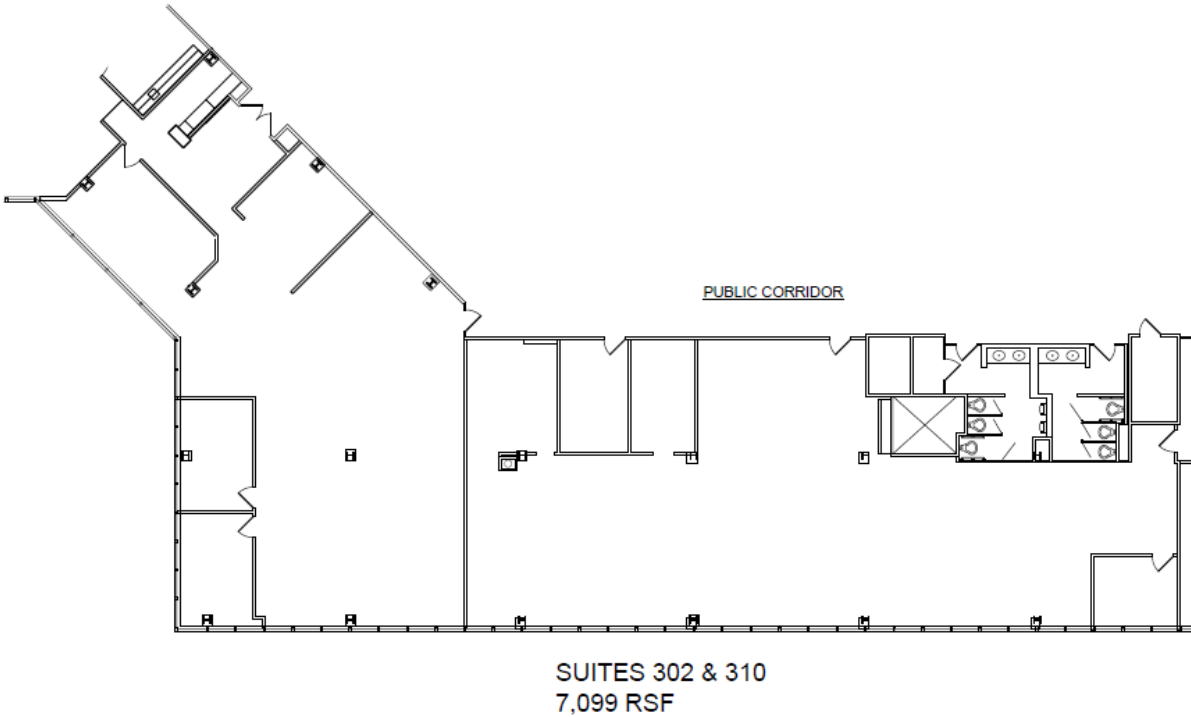
**Lesley Gutman**  
 Senior Vice President | 248.860.6800  
[lgutman@farbman.com](mailto:lgutman@farbman.com)

NO WARRANTY, EXPRESS OR IMPLIED, IS MADE AS TO THE ACCURACY OF THE INFORMATION CONTAINED HEREIN. THIS INFORMATION IS SUBMITTED SUBJECT TO ERRORS, OMISSIONS, CHANGE OF PRICE, RENTAL OR OTHER CONDITIONS, WITHDRAWAL WITHOUT NOTICE, AND IS SUBJECT TO ANY SPECIAL LISTING CONDITIONS IMPOSED BY OUR PRINCIPALS, COOPERATING BROKERS, BUYERS, TENANTS AND OTHER PARTIES WHO RECEIVE THIS DOCUMENT SHOULD NOT RELY ON IT, BUT SHOULD USE IT AS A STARTING POINT OF ANALYSIS, AND SHOULD INDEPENDENTLY CONFIRM THE ACCURACY OF THE INFORMATION CONTAINED HEREIN THROUGH A DUE DILIGENCE REVIEW OF THE BOOKS, RECORDS, FILES AND DOCUMENTS THAT CONSTITUTE RELIABLE SOURCES OF THE INFORMATION DESCRIBED HEREIN. LOGOS ARE FOR IDENTIFICATION PURPOSES ONLY AND MAY BE TRADEMARKS OF THEIR RESPECTIVE COMPANIES. NAI Farbman, INC. CA BRE LIC. #01990696.

# 3310 W BIG BEAVER SHEFFIELD OFFICE PARK



## FOR LEASE



KEY PLAN



**SHEFFIELD OFFICE PARK**  
**3310 W. BIG BEAVER RD., SUITES 302 & 310**

03-29-23

SCALE: 1/16"=1'-0"

FOR LEASING  
INFORMATION CALL  
LESLEY GUTMAN  
(248) 353-0500



Commercial Real Estate Services, Worldwide.

[www.naifarberman.com](http://www.naifarberman.com)

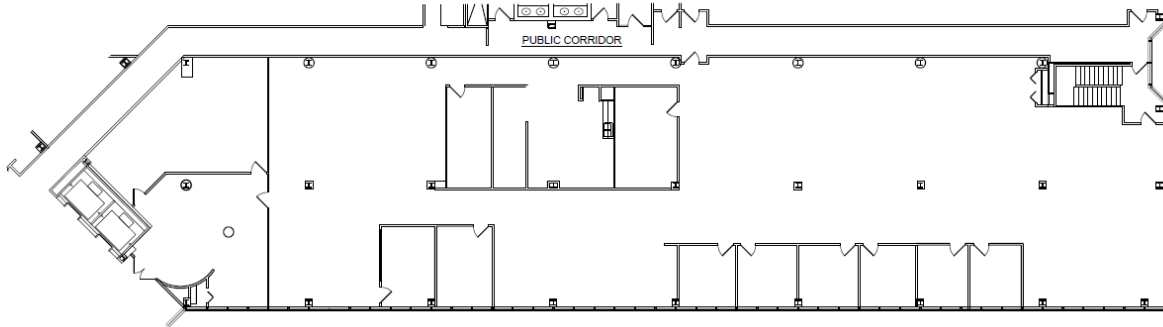
**Lesley Gutman**  
Senior Vice President | 248.860.6800  
[lgutman@farberman.com](mailto:lgutman@farberman.com)

NO WARRANTY, EXPRESS OR IMPLIED, IS MADE AS TO THE ACCURACY OF THE INFORMATION CONTAINED HEREIN. THIS INFORMATION IS SUBMITTED SUBJECT TO ERRORS, OMISSIONS, CHANGE OF PRICE, RENTAL OR OTHER CONDITIONS, WITHDRAWAL WITHOUT NOTICE, AND IS SUBJECT TO ANY SPECIAL LISTING CONDITIONS IMPOSED BY OUR PRINCIPALS. COOPERATING BROKERS, BUYERS, TENANTS AND OTHER PARTIES WHO RECEIVE THIS DOCUMENT SHOULD NOT RELY ON IT, BUT SHOULD USE IT AS A STARTING POINT OF ANALYSIS, AND SHOULD INDEPENDENTLY CONFIRM THE ACCURACY OF THE INFORMATION CONTAINED HEREIN THROUGH A DUE DILIGENCE REVIEW OF THE BOOKS, RECORDS, FILES AND DOCUMENTS THAT CONSTITUTE RELIABLE SOURCES OF THE INFORMATION DESCRIBED HEREIN. LOGOS ARE FOR IDENTIFICATION PURPOSES ONLY AND MAY BE TRADEMARKS OF THEIR RESPECTIVE COMPANIES. NAI Farberman, INC. CA BRE LIC. #01990696.

# 3310 W BIG BEAVER SHEFFIELD OFFICE PARK



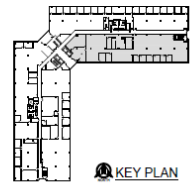
## FOR LEASE



SUITE 300  
11,038 RSF



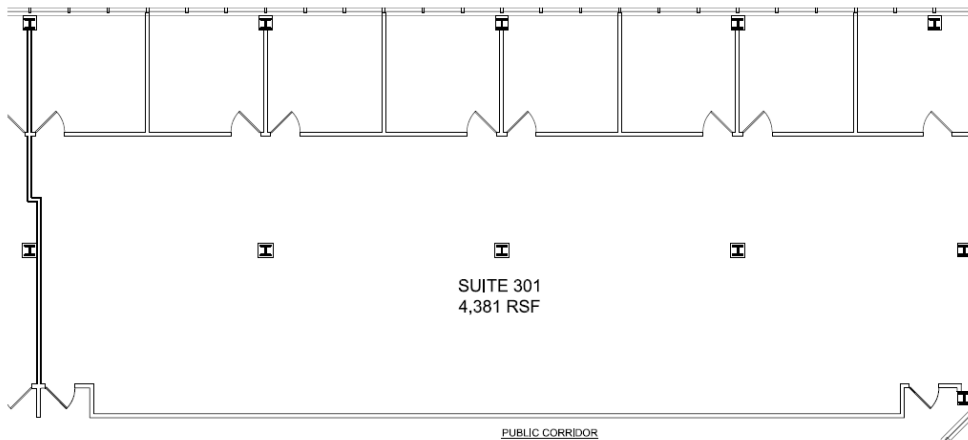
**SHEFFIELD OFFICE PARK**  
**3310 W. BIG BEAVER RD., SUITE 300**  
12-2-22 SCALE: 1/16"=1'-0"



**KEY PLAN**  
FOR LEASING  
INFORMATION CALL  
LESLEY GUTMAN  
(248) 353-0500



PREPARED BY METRO CAD GROUP



SUITE 301  
4,381 RSF



**SHEFFIELD OFFICE PARK**  
**3310 W. BIG BEAVER RD., SUITE 301**  
3-29-23 SCALE: 1/8"=1'-0"



**KEY PLAN**  
FOR LEASING  
INFORMATION CALL  
LESLEY GUTMAN  
(248) 353-0500



PREPARED BY METRO CAD GROUP



Commercial Real Estate Services, Worldwide.  
[www.naifarbman.com](http://www.naifarbman.com)

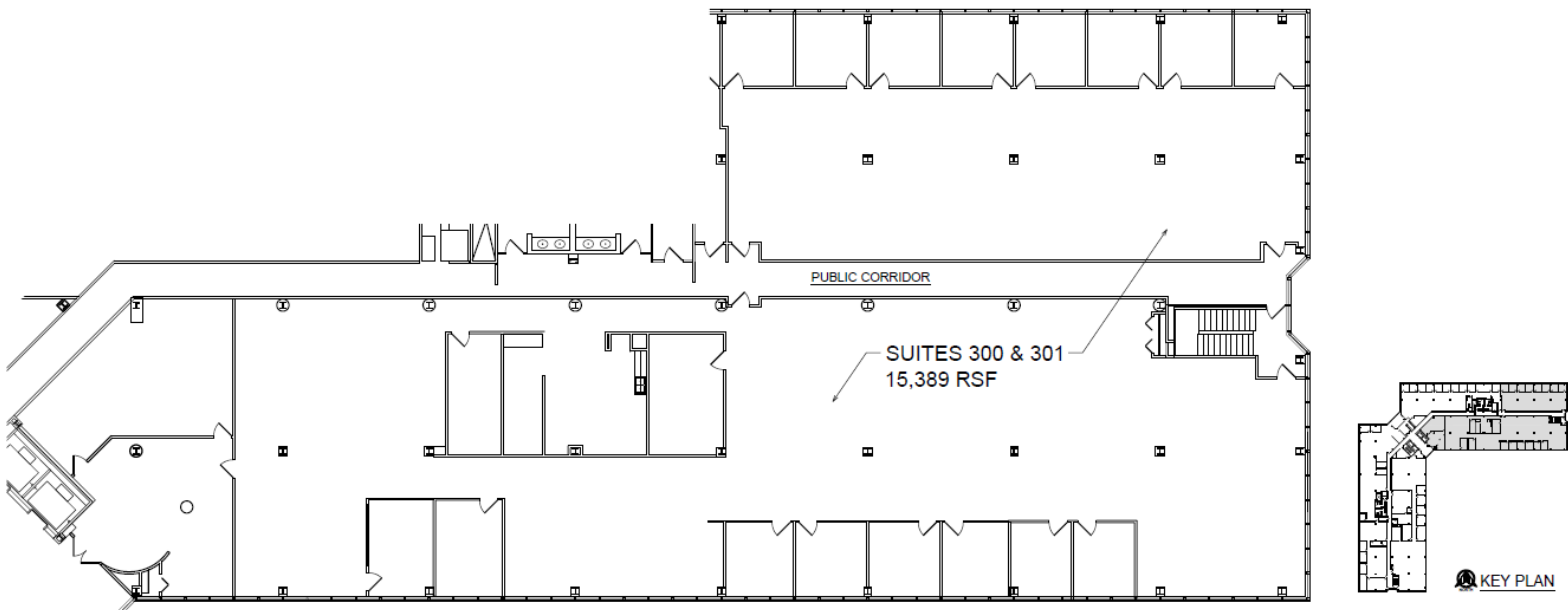
**Lesley Gutman**  
Senior Vice President | 248.860.6800  
[lgutman@farbman.com](mailto:lgutman@farbman.com)

NO WARRANTY, EXPRESS OR IMPLIED, IS MADE AS TO THE ACCURACY OF THE INFORMATION CONTAINED HEREIN. THIS INFORMATION IS SUBMITTED SUBJECT TO ERRORS, OMISSIONS, CHANGE OF PRICE, RENTAL OR OTHER CONDITIONS, WITHDRAWAL WITHOUT NOTICE, AND IS SUBJECT TO ANY SPECIAL LISTING CONDITIONS IMPOSED BY OUR PRINCIPALS, COOPERATING BROKERS, BUYERS, TENANTS AND OTHER PARTIES WHO RECEIVE THIS DOCUMENT SHOULD NOT RELY ON IT, BUT SHOULD USE IT AS A STARTING POINT OF ANALYSIS, AND SHOULD INDEPENDENTLY CONFIRM THE ACCURACY OF THE INFORMATION CONTAINED HEREIN THROUGH A DUE DILIGENCE REVIEW OF THE BOOKS, RECORDS, FILES AND DOCUMENTS THAT CONSTITUTE RELIABLE SOURCES OF THE INFORMATION DESCRIBED HEREIN. LOGOS ARE FOR IDENTIFICATION PURPOSES ONLY AND MAY BE TRADEMARKS OF THEIR RESPECTIVE COMPANIES. NAI Farbman, INC. CA BRE LIC. #01990696.

# 3310 W BIG BEAVER SHEFFIELD OFFICE PARK



## FOR LEASE



**SHEFFIELD OFFICE PARK**  
**3310 W. BIG BEAVER RD., SUITES 300 & 301**  
NORTH 3-29-23 SCALE: 1/16"=1'-0"

FOR LEASING  
INFORMATION CALL  
LESLEY GUTMAN  
(248) 353-0500



PREPARED BY METRO CAD GROUP



Commercial Real Estate Services, Worldwide.

[www.naifarberman.com](http://www.naifarberman.com)

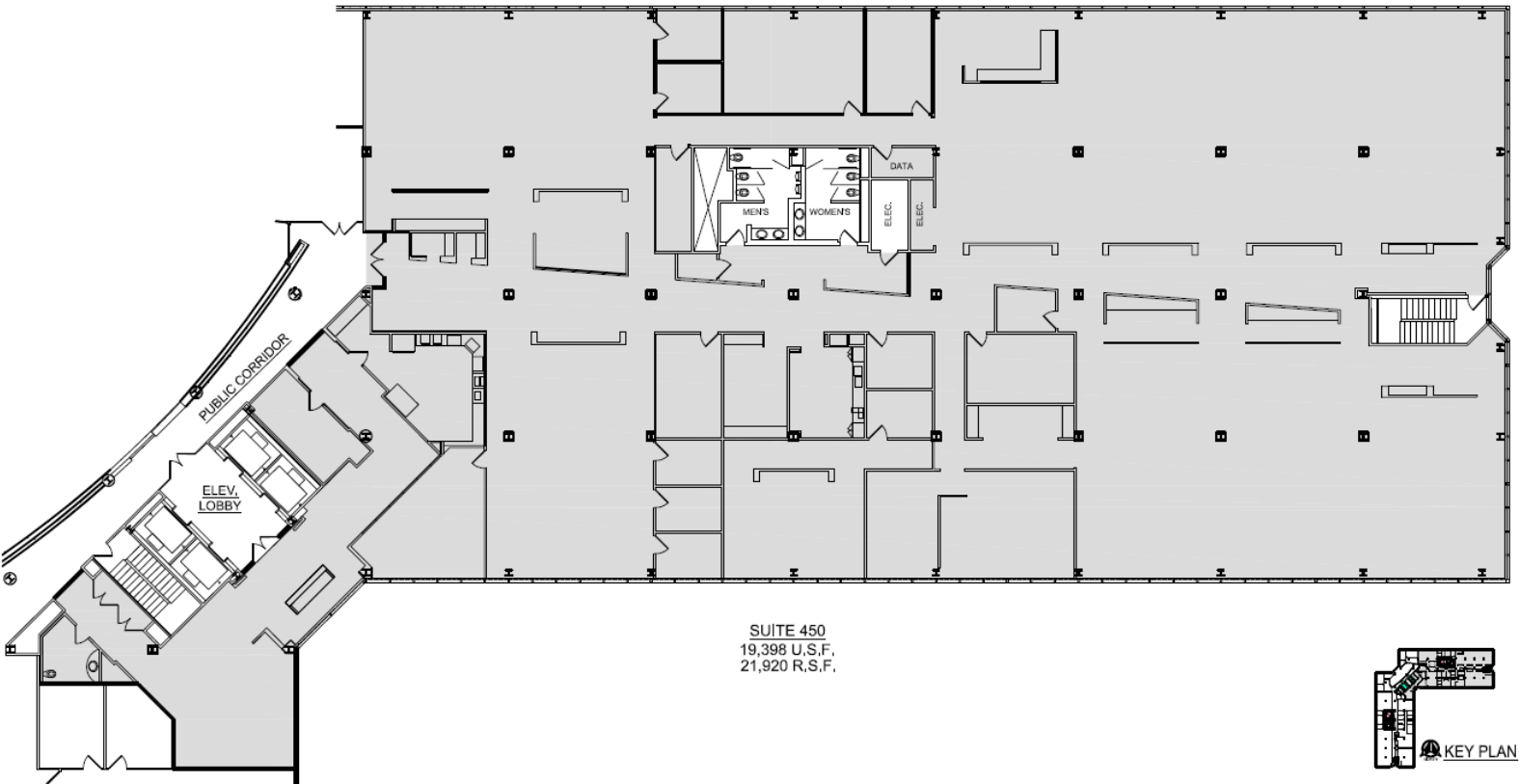
**Lesley Gutman**  
Senior Vice President | 248.860.6800  
[lgutman@farberman.com](mailto:lgutman@farberman.com)

NO WARRANTY, EXPRESS OR IMPLIED, IS MADE AS TO THE ACCURACY OF THE INFORMATION CONTAINED HEREIN. THIS INFORMATION IS SUBMITTED SUBJECT TO ERRORS, OMISSIONS, CHANGE OF PRICE, RENTAL OR OTHER CONDITIONS, WITHDRAWAL WITHOUT NOTICE, AND IS SUBJECT TO ANY SPECIAL LISTING CONDITIONS IMPOSED BY OUR PRINCIPALS. COOPERATING BROKERS, BUYERS, TENANTS AND OTHER PARTIES WHO RECEIVE THIS DOCUMENT SHOULD NOT RELY ON IT, BUT SHOULD USE IT AS A STARTING POINT OF ANALYSIS, AND SHOULD INDEPENDENTLY CONFIRM THE ACCURACY OF THE INFORMATION CONTAINED HEREIN THROUGH A DUE DILIGENCE REVIEW OF THE BOOKS, RECORDS, FILES AND DOCUMENTS THAT CONSTITUTE RELIABLE SOURCES OF THE INFORMATION DESCRIBED HEREIN. LOGOS ARE FOR IDENTIFICATION PURPOSES ONLY AND MAY BE TRADEMARKS OF THEIR RESPECTIVE COMPANIES. NAI Farberman, INC. CA BRE LIC. #01990696.

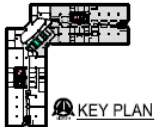
# 3310 W BIG BEAVER SHEFFIELD OFFICE PARK



## FOR LEASE



SUITE 450  
19,398 U.S.F.  
21,920 R.S.F.



FOR LEASING  
INFORMATION CALL  
LESLEY GUTMAN  
(248) 353-0500

PREPARED BY METRO CAD GROUP



**SHEFFIELD OFFICE PARK**  
**3310 W. BIG BEAVER RD. - SUITE 450**  
6-2-21 SCALE 1/16" = 1'-0"



Commercial Real Estate Services, Worldwide.

[www.naifarbman.com](http://www.naifarbman.com)

**Lesley Gutman**  
Senior Vice President | 248.860.6800  
[lgutman@farbman.com](mailto:lgutman@farbman.com)

NO WARRANTY, EXPRESS OR IMPLIED, IS MADE AS TO THE ACCURACY OF THE INFORMATION CONTAINED HEREIN. THIS INFORMATION IS SUBMITTED SUBJECT TO ERRORS, OMISSIONS, CHANGE OF PRICE, RENTAL OR OTHER CONDITIONS, WITHDRAWAL WITHOUT NOTICE, AND IS SUBJECT TO ANY SPECIAL LISTING CONDITIONS IMPOSED BY OUR PRINCIPALS. COOPERATING BROKERS, BUYERS, TENANTS AND OTHER PARTIES WHO RECEIVE THIS DOCUMENT SHOULD NOT RELY ON IT, BUT SHOULD USE IT AS A STARTING POINT OF ANALYSIS, AND SHOULD INDEPENDENTLY CONFIRM THE ACCURACY OF THE INFORMATION CONTAINED HEREIN THROUGH A DUE DILIGENCE REVIEW OF THE BOOKS, RECORDS, FILES AND DOCUMENTS THAT CONSTITUTE RELIABLE SOURCES OF THE INFORMATION DESCRIBED HEREIN. LOGOS ARE FOR IDENTIFICATION PURPOSES ONLY AND MAY BE TRADEMARKS OF THEIR RESPECTIVE COMPANIES. NAI Farbman, INC. CA BRE LIC. #01990696.