

OFFICE SUITE FOR LEASE

IN THE HEART OF PALM DESERT



72880 Fred Waring, Ste D17, Palm Desert, CA
On Fred Waring / Monterey Avenue

- Great Street Frontage
- Zoned OP (Office Professional)

No Retail or Personal Services Allowed



Excellent Location!

- Office Available
- Approx. 1,000 SF
- Large Reception/Waiting Area
- (2) Large Private Rooms
- (1) Private Restroom
- Plenty of Parking

*** SUITES A3 & A4 COMING SOON**



www.baxleyproperties.com
Phone: 760-773-3310
Fax: 760-773-3013
73712 Alessandro Drive, Ste B-4, Palm Desert, CA 92260

Matthew Longstreth
matthew@baxleyproperties.com
Office: 760-773-3310
Cell: 949-293-1314

DRE# 01322594

DISCLAIMER:

The information above has been obtained from sources believed reliable. While we do not doubt its accuracy, we have not verified it and make no guarantee, warranty or representation about it. It is your responsibility to independently confirm its accuracy and completeness. Any projections, opinions, assumptions or estimates used are for example only, and do not represent the current or future performance of the property.

4/11/25

OFFICE SUITE FOR LEASE

INTERIOR PHOTOS: 72880 FRED WARING, SUITE D17, PALM DESERT, CA



Description: 1,000 square feet of office space for lease at the 880 building on Fred Waring in Palm Desert. This single-story building is in an excellent location with high traffic counts. The interior of the suite was recently refreshed to include a new plank style floor and fresh paint. This property is zoned office park (OP) which allows for all office uses including medical.

NO RETAIL OR PERSONAL SERVICES

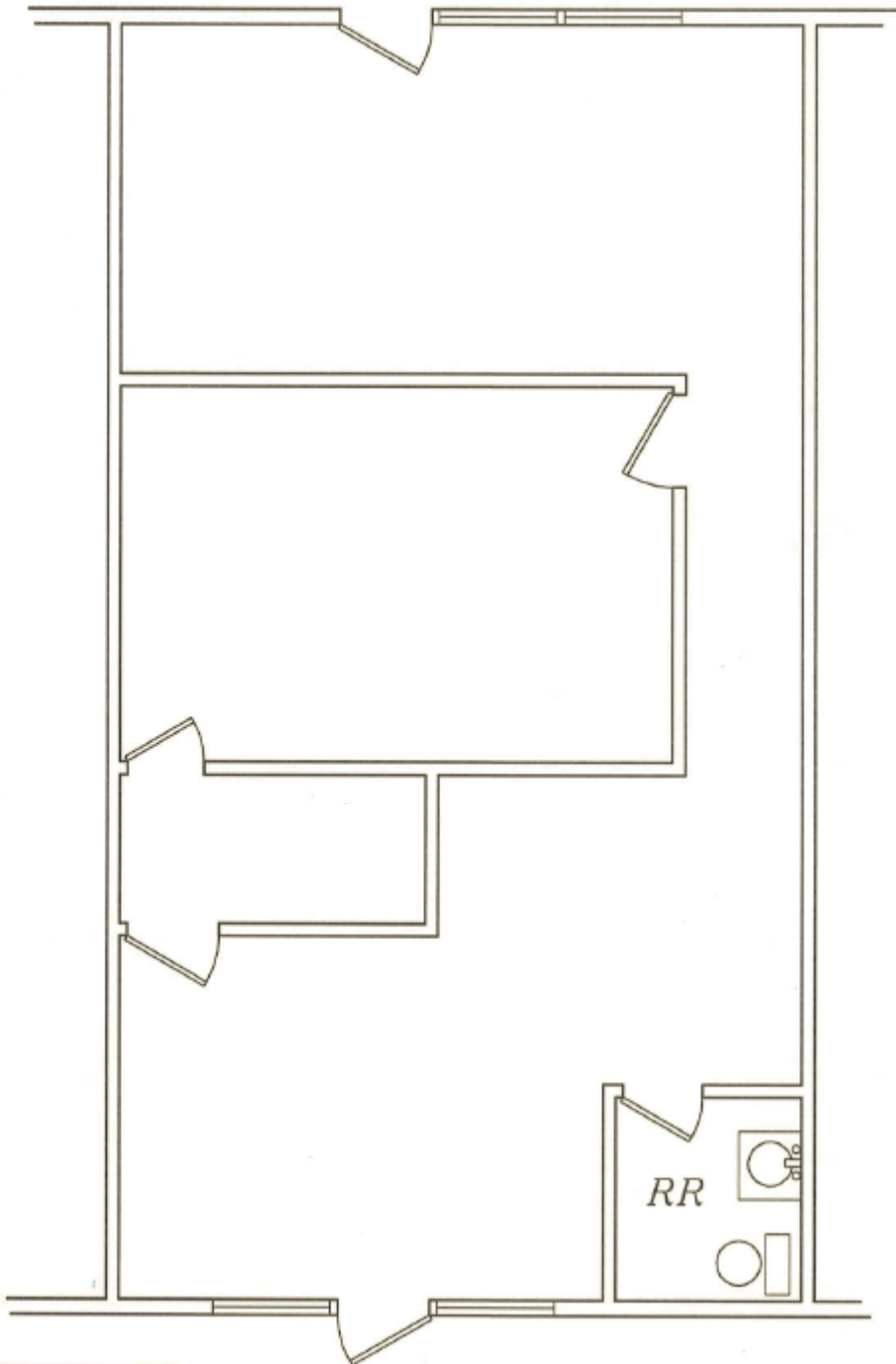
DISCLAIMER:

The information above has been obtained from sources believed reliable. While we do not doubt its accuracy, we have not verified it and make no guarantee, warranty or representation about it. It is your responsibility to independently confirm its accuracy and completeness. Any projections, opinions, assumptions or estimates used are for example only, and do not represent the current or future performance of the property.

OFFICE SUITE FOR LEASE

FLOOR PLAN: 72880 FRED WARING, SUITE D17, PALM DESERT, CA

FRED WARING STREET FRONTAGE



*SUITE D 17
1000 SQ FT*

A

*SUITE D 17
FLOOR PLAN*

SCALE : 3/16" = 1'-0"

COVERED PARKING

880 Center Suite D17.dwg

DISCLAIMER:

The information above has been obtained from sources believed reliable. While we do not doubt its accuracy, we have not verified it and make no guarantee, warranty or representation about it. It is your responsibility to independently confirm its accuracy and completeness. Any projections, opinions, assumptions or estimates used are for example only, and do not represent the current or future performance of the property.