

# 455 JEFFERSON



## LARGE BLOCK AVAILABILITY IN BUSHWICK

### AREA

125,000 TOTAL RSF ON 6 FLOORS

### POSSESSION

IMMEDIATE

### ASKING RENT

UPON REQUEST

### TERM

5-10 YEARS



For more information, please contact:

**JOSEPH CIRONE**  
Executive Director  
718 606 7038  
joseph.cirone@cushwake.com

**PATRICK J. DUGAN**  
Executive Director  
718 606 7079  
patrick.dugan@cushwake.com

**REMY LIEBERSOHN**  
Senior Associate  
212 841 7638  
remy.liebersohn@cushwake.com



A full commission computed and earned in accordance with the rates and conditions of our agency agreement with our principal, when received from our principal, will be paid to the cooperating broker who consummates a lease which is unconditionally executed and delivered by and between lessor and lessee (a copy of the rates and conditions referred to above is available upon request).

# 455

## JEFFERSON

### PROPERTY HIGHLIGHTS

- Central Bushwick Location
- Recently underwent major building wide renovations including new lobby, elevators, windows, and bathrooms
- 21,500 rsf floor plates
- Ceiling heights of 11'-14'
- Pre-Built units available
- Unobstructed views of Midtown & Downtown Manhattan
- Private Rooftop Access Available
- Located near the L train at Jefferson Street



## PROPERTY PHOTOS



## FLOOR PLANS

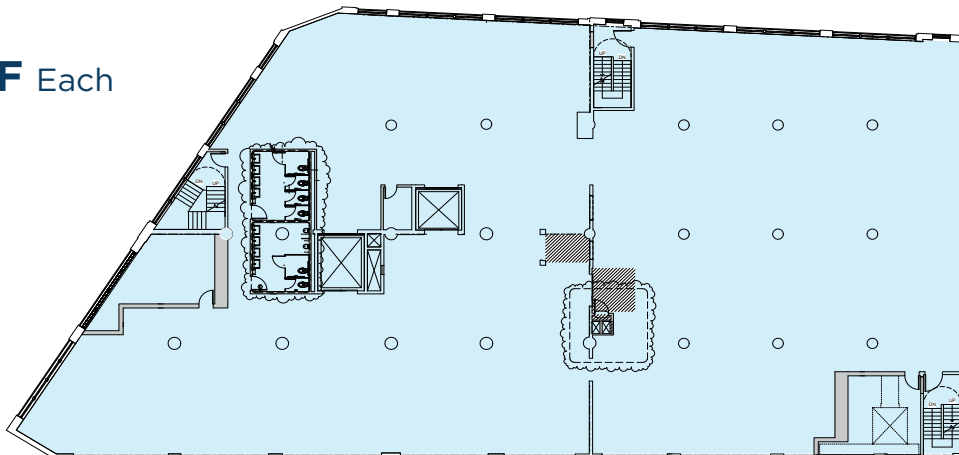
1ST FLOOR  
12,345 SF



2ND FLOOR  
Unit A: 2,540 RSF  
Unit B: 4,142 RSF  
Unit C: 9,486 RSF



FLOORS 3-6  
21,500 RSF Each



## AMENITIES MAP



## NEIGHBORING TENANTS

1. Heavy Woods
2. Left Hand Path
3. The Bodega
4. Pearl's Social & Billy Club
5. Montana's Trail House
6. The Cobra Club
7. The House of Yes
8. The Rookery
9. Bunker Vietnamese
10. Bushwick Starr
11. Urban Jungle

For more information, please contact:

JOSEPH CIRONE  
Executive Director  
718 606 7038  
joseph.cirone@cushwake.com

PATRICK J. DUGAN  
Executive Director  
718 606 7079  
patrick.dugan@cushwake.com

REMY LIEBERSOHN  
Senior Associate  
212 841 7638  
remy.liebersohn@cushwake.com