

PRIME SANTA ROSA RETAIL SPACE FOR LEASE

±5,000 RSF



2510 SANTA ROSA AVENUE | SANTA ROSA | CA

RON REINKING

707-583-8423

ron.reinking@nrmk.com

CA DRE #00931004

NEWMARK

RETAIL SPACE

±5,000 RSF

\$2.00/RSF/MONTH, NNN

HIGHLIGHTS

- Ground floor space
- High visibility location
- Excellent glass-line and natural light
- High 12 foot ceilings throughout
- Building/monument signage available
- Signalized intersection
- Zoned: General Commercial (CG)
- Ample parking
- Management office
- Adjacent to New In & Out Burger
- Modern construction



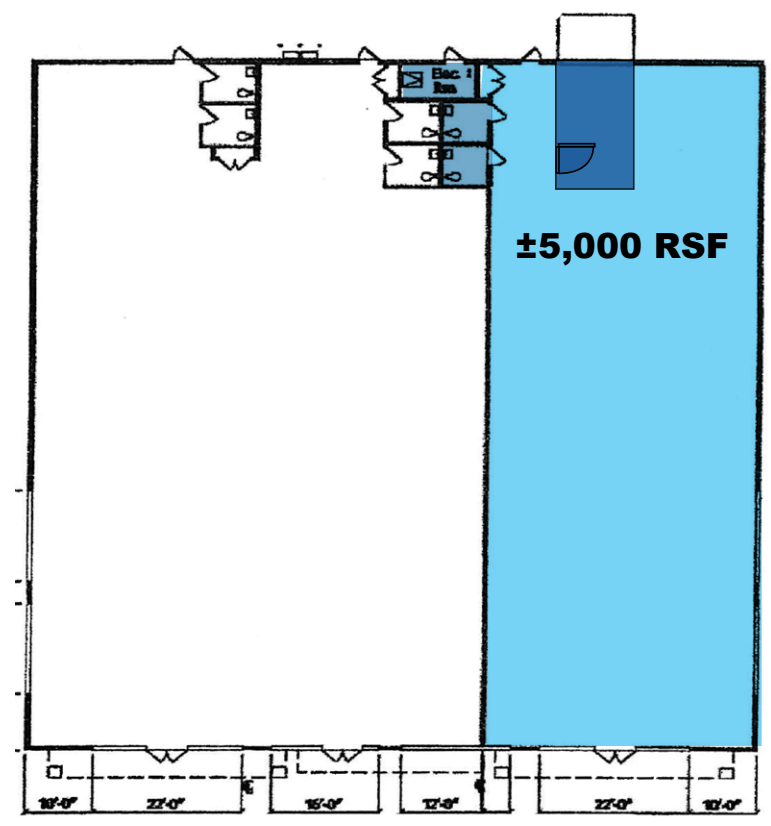
PHOTO GALLERY



FLOOR PLAN

±5,000 RSF

- EXCELLENT IDENTITY
- HIGH-TRAFFIC, CORNER LOCATION
- GROUND FLOOR SPACE
- REAR LOADING DOOR
- ADJACENT TO IN & OUT BURGER
- HIGH CEILINGS THROUGHOUT



FLOOR PLAN NOT TO SCALE

← **SANTA ROSA AVENUE** →


- = OFFICE
- = RETAIL
- = RESTROOMS


AMENITIES MAP



2510 SANTA ROSA AVE TO:

- Sonoma Airport 10 Miles
- Petaluma 16 Miles
- Sonoma 25 Miles
- San Rafael 35 Miles
- San Francisco 53 Miles

SMART Train line 

SMART Stations 



PRIME SANTA ROSA RETAIL SPACE FOR LEASE

2510 SANTA ROSA AVENUE | SANTA ROSA | CALIFORNIA



RON REINKING

707-583-8423

ron.reinking@nrmk.com

CA DRE #00931004

1101 FIFTH AVE

SUITE 370

SAN RAFAEL, CA 94901

415-526-7676

NMRK.COM

NEWMARK

The distributor of this communication is performing acts for which a real estate license is required. The information contained herein has been obtained from sources deemed reliable but has not been verified and no guarantee, warranty or representation, either express or implied, is made with respect to such information. Terms of sale or lease and availability are subject to change or withdrawal without notice.

Last modified: October 30, 2023 10:14 AM