

Retail Property For Lease

7402 INDIANAPOLIS BLVD, HAMMOND, IN 46324



For more information, please contact:

BRETT MCDERMOTT, CCIM

Co-Founder/Senior Vice President

219.864.0200

bmcdermott@latitudeco.com

MYLES RAPCHAK

Principal/Vice President

219.864.0200

mrappchak@latitudeco.com

JOHN O'MALLEY

Associate Broker

219.864.0200

jomalley@latitudeco.com



LATITUDE
COMMERCIAL
REAL ESTATE SERVICES

LATITUDECO.COM

7402 INDIANAPOLIS BLVD

Hammond, IN 46324



EXECUTIVE SUMMARY



OFFERING SUMMARY

Available SF:	2,880 SF
Lease Rate:	\$18.00 SF/yr (MG)
Lot Size:	0.17 Acres
Year Built:	1963
Building Size:	2880 SF
Renovated:	1998
Zoning:	C-4

PROPERTY HIGHLIGHTS

- 2,880 SF freestanding commercial building w/ new roof and asphalt recently done
- 0.17-acre lot with on-site parking
- Former animal clinic—ideal for veterinary, medical office, grooming, retail, or service use
- Strong visibility along Indianapolis Blvd
- Convenient access to surrounding residential and commercial density



BRETT MCDERMOTT, CCIM
Co-Founder/Senior Vice President
219.864.0200
bmcdermott@latitudeco.com

MYLES RAPCHAK
Principal/Vice President
219.864.0200
mrapchak@latitudeco.com

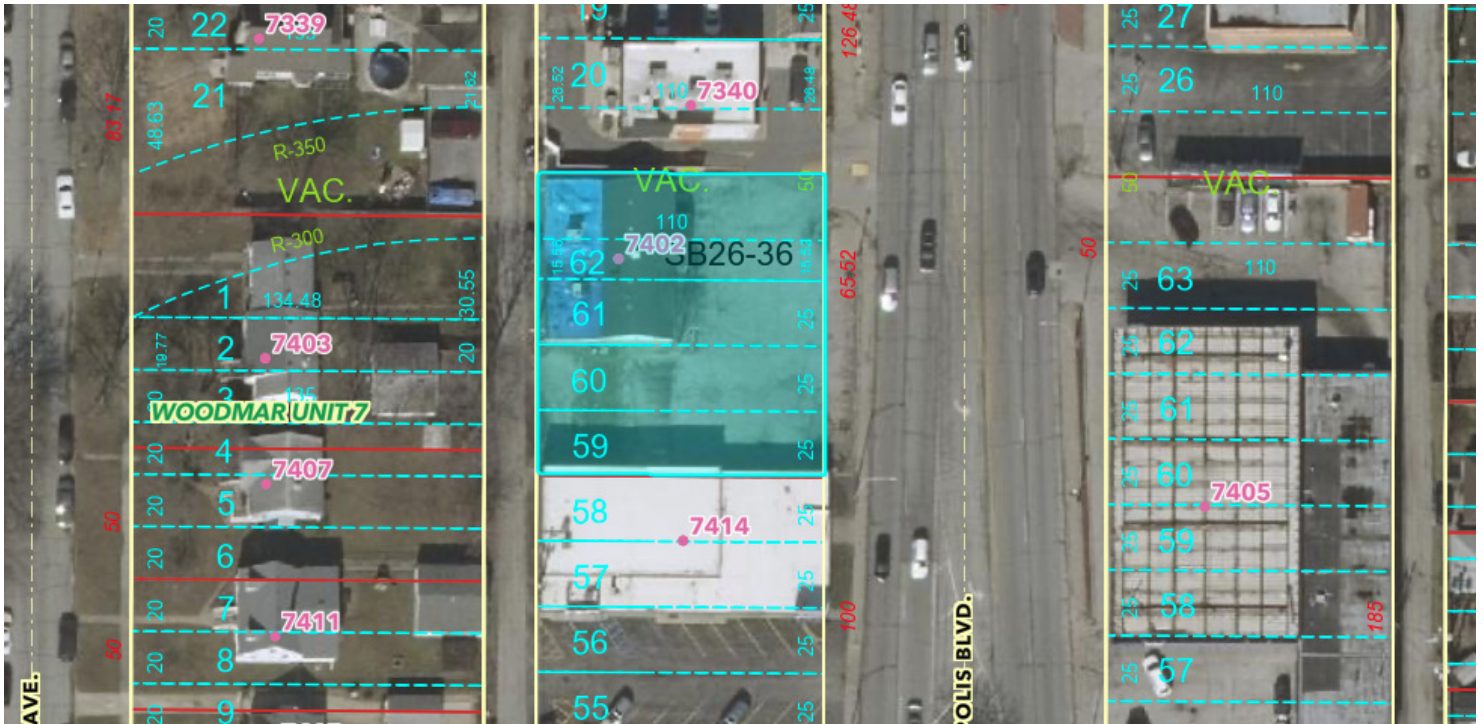
JOHN O'MALLEY
Associate Broker
219.864.0200
jomalley@latitudeco.com

7402 INDIANAPOLIS BLVD

Hammond, IN 46324



PROPERTY DESCRIPTION



PROPERTY DESCRIPTION

Prime commercial opportunity along Indianapolis Blvd. This 2,880 SF freestanding building on a 0.17-acre lot offers excellent visibility, direct boulevard access, and strong parking capacity. Formerly an animal clinic, the property features a functional layout suitable for medical, retail, professional services, or specialty users seeking a standalone location in a high-traffic corridor.

LOCATION DESCRIPTION

Hammond is a city in Lake County, Indiana, United States. Located along Lake Michigan, it is part of the Chicago metropolitan area and the only city in Indiana to border Chicago. As of the 2020 census, it is the eighth-most populous city in Indiana, with 77,879 residents. It was first settled in the mid-19th century and it is one of the oldest cities of northern Lake County.

From north to south, Hammond runs from Lake Michigan to the Little Calumet River; from east to west along its southern border, it runs from the Illinois state line to Cline Avenue. The city is traversed by numerous railroads and expressways, including the South Shore Line, Borman Expressway, and Indiana Toll Road. Notable local landmarks include the parkland around Wolf Lake and the Horseshoe Hammond riverboat casino. Part of the Rust Belt, Hammond has been industrial almost from its inception, but is also home to a campus of Purdue University and numerous historic districts.

BRETT MCDERMOTT, CCIM

Co-Founder/Senior Vice President
219.864.0200
bmcdermott@latitudeco.com

MYLES RAPCHAK

Principal/Vice President
219.864.0200
mrachak@latitudeco.com

JOHN O'MALLEY

Associate Broker
219.864.0200
jomalley@latitudeco.com

7402 INDIANAPOLIS BLVD

Hammond, IN 46324



ADDITIONAL PHOTOS



BRETT MCDERMOTT, CCIM
Co-Founder/Senior Vice President
219.864.0200
bmcdermott@latitudeco.com

MYLES RAPCHAK
Principal/Vice President
219.864.0200
mrapchak@latitudeco.com

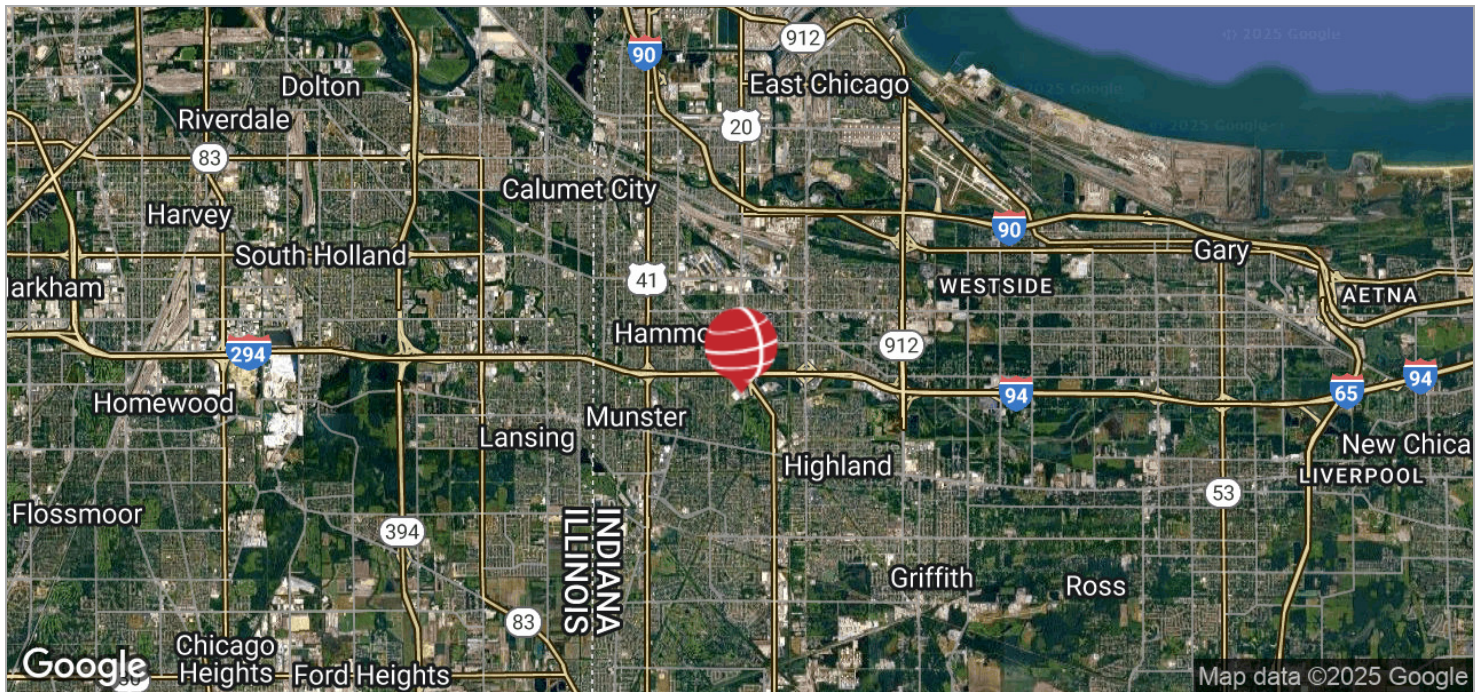
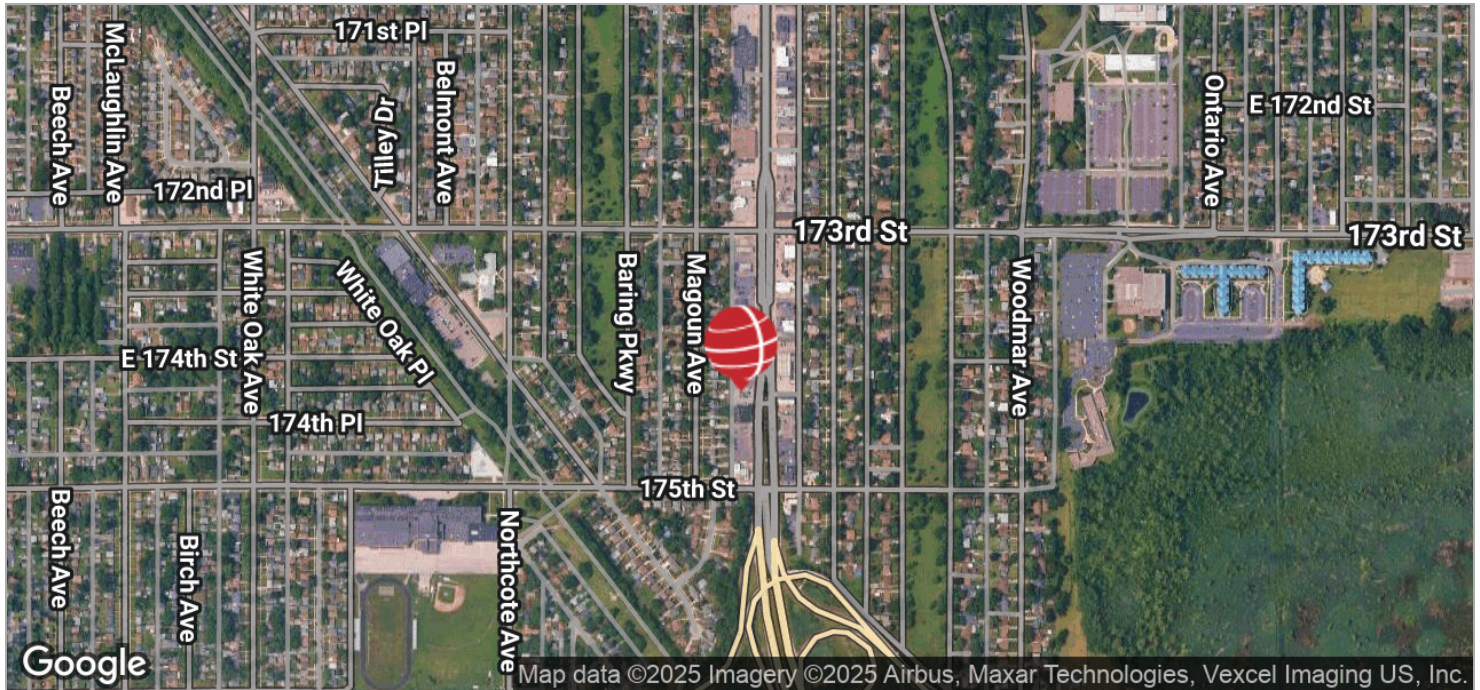
JOHN O'MALLEY
Associate Broker
219.864.0200
jomalley@latitudeco.com

7402 INDIANAPOLIS BLVD

Hammond, IN 46324



LOCATION MAPS



BRETT MCDERMOTT, CCIM

Co-Founder/Senior Vice President
219.864.0200
bmcdermott@latitudeco.com

MYLES RAPCHAK

Principal/Vice President
219.864.0200
mrapchak@latitudeco.com

JOHN O'MALLEY

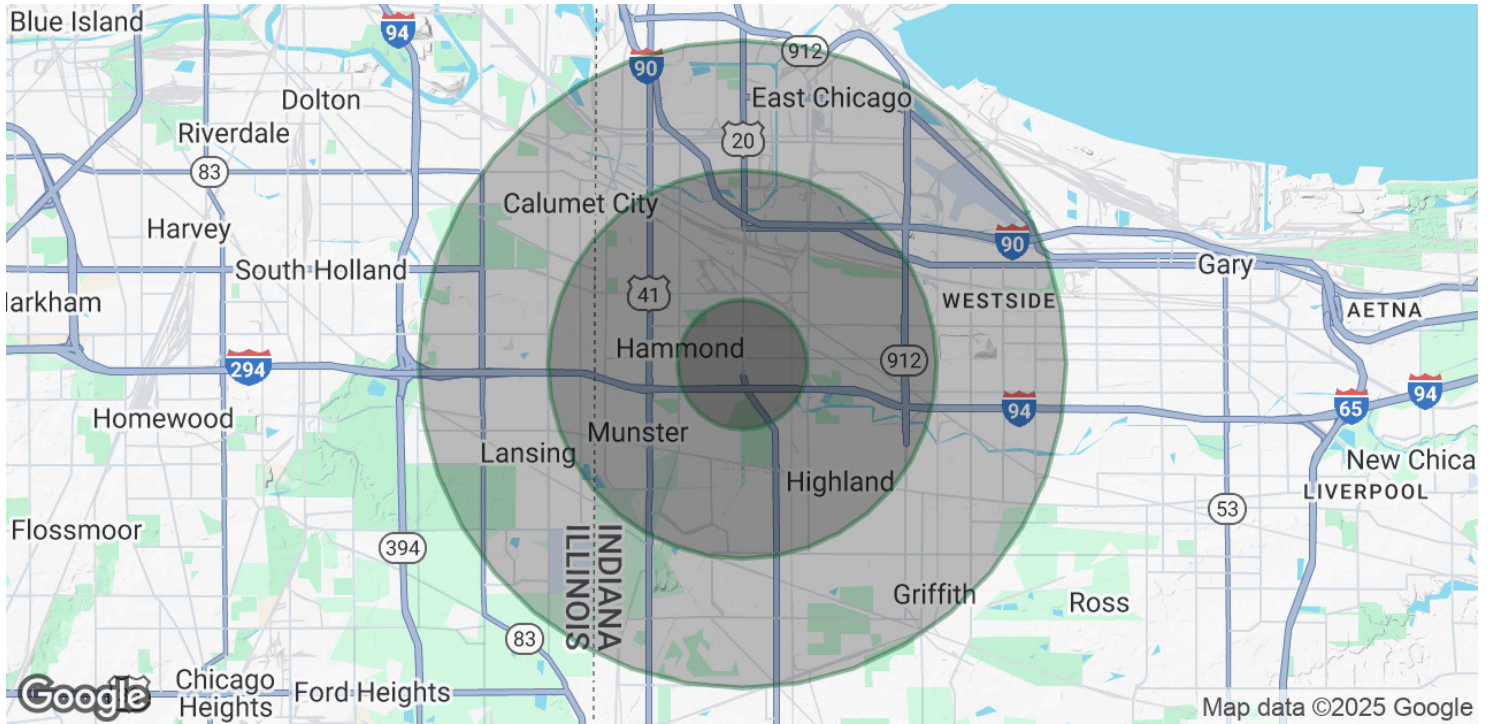
Associate Broker
219.864.0200
jomalley@latitudeco.com

7402 INDIANAPOLIS BLVD

Hammond, IN 46324



DEMOGRAPHICS MAP & REPORT



POPULATION

	1 MILE	3 MILES	5 MILES
Total Population	12,555	106,193	226,645
Average Age	38	39	40
Average Age (Male)	37	38	39
Average Age (Female)	39	40	41

HOUSEHOLDS & INCOME

	1 MILE	3 MILES	5 MILES
Total Households	4,982	40,866	89,076
# of Persons per HH	2.5	2.6	2.5
Average HH Income	\$74,607	\$81,841	\$81,197
Average House Value	\$175,532	\$208,924	\$214,784

Demographics data derived from AlphaMap

BRETT MCDERMOTT, CCIM

Co-Founder/Senior Vice President
219.864.0200
bmcdermott@latitudeco.com

MYLES RAPCHAK

Principal/Vice President
219.864.0200
mrapchak@latitudeco.com

JOHN O'MALLEY

Associate Broker
219.864.0200
jomalley@latitudeco.com