

RIVERDALE FREEWAY PARK

FOR LEASE



PROPERTY DETAILS

5202 S. Freeway Park Dr., Riverdale, Utah 84405

\$25.00/SF FULL-SERVICE

- Full Building Availability
- 1,160–13,040 SF
- 4:1,000 parking ratio (54 stalls)
- Direct, immediate I-15 visibility
- Pole and crown signage available
- 1 minute drive to HAFB North Gate
- 5-7 minute drive to HAFB West Gate
- Interior improvements underway
- In-suite improvements available
- Immediate access to:
 - » I-15
 - » I-84
 - » Riverdale Road
 - » Hill Air Force Base

2025 DEMOS



EST. POPULATION

1 MILE » **10,782**
3 MILE » **89,932**
5 MILE » **207,878**



EST. HOUSEHOLDS

1 MILE » **4,118**
3 MILE » **31,417**
5 MILE » **72,088**



EST. AVERAGE HH INCOME

1 MILE » **\$99,861**
3 MILE » **\$109,830**
5 MILE » **\$115,016**



CHRIS FALK, CCIM, SIOR
cfalk@newmarkmw.com
direct 801.499.6514
[View Profile](#)

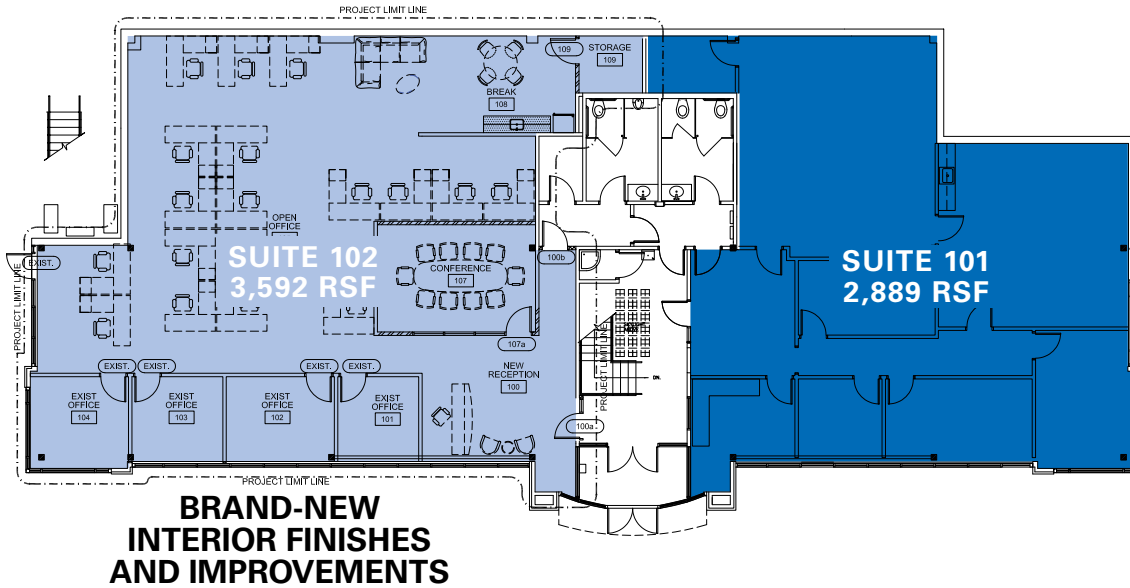
BRAXTON WILLIE, CCIM
bwillie@newmarkmw.com
direct 801.803.3334
[View Profile](#)

BRANSON WOOD
bwood@newmarkmw.com
direct 801.510.5207
[View Profile](#)

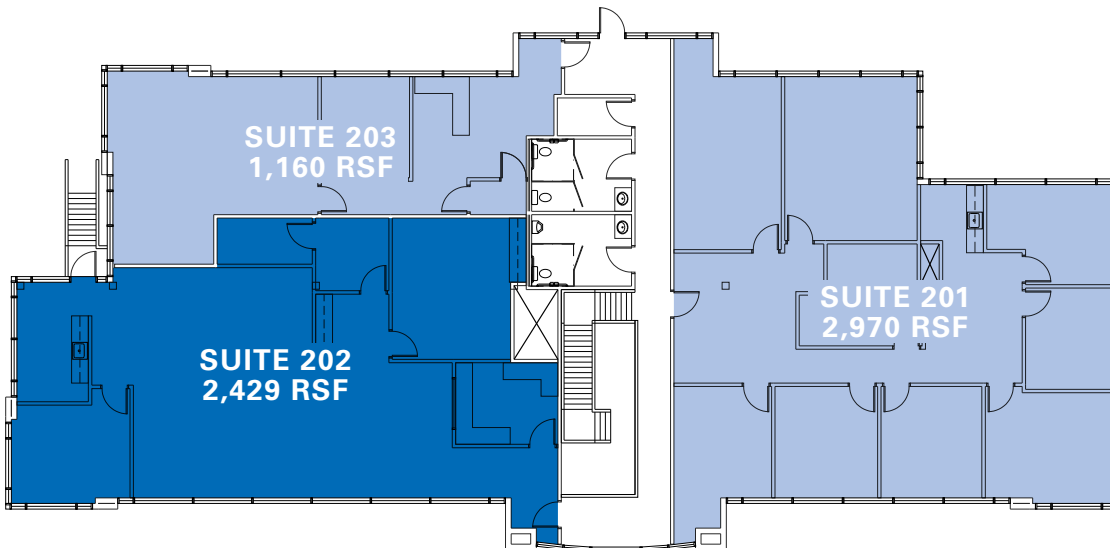
**FULL SERVICE
COMMERCIAL REAL ESTATE**
312 East South Temple
Salt Lake City, Utah 84111
Office 801.456.8800
www.newmarkmw.com

FREEWAY PARK OFFICE

FLOOR 1



FLOOR 2



CHRIS FALK, CCIM, SIOR
cfalk@newmarkmw.com
direct 801.499.6514
[View Profile](#)

BRAXTON WILLIE, CCIM
bwillie@newmarkmw.com
direct 801.803.3334
[View Profile](#)

BRANSON WOOD
bwood@newmarkmw.com
direct 801.510.5207
[View Profile](#)

**FULL SERVICE
COMMERCIAL REAL ESTATE**
312 East South Temple
Salt Lake City, Utah 84111
Office 801.456.8800
www.newmarkmw.com

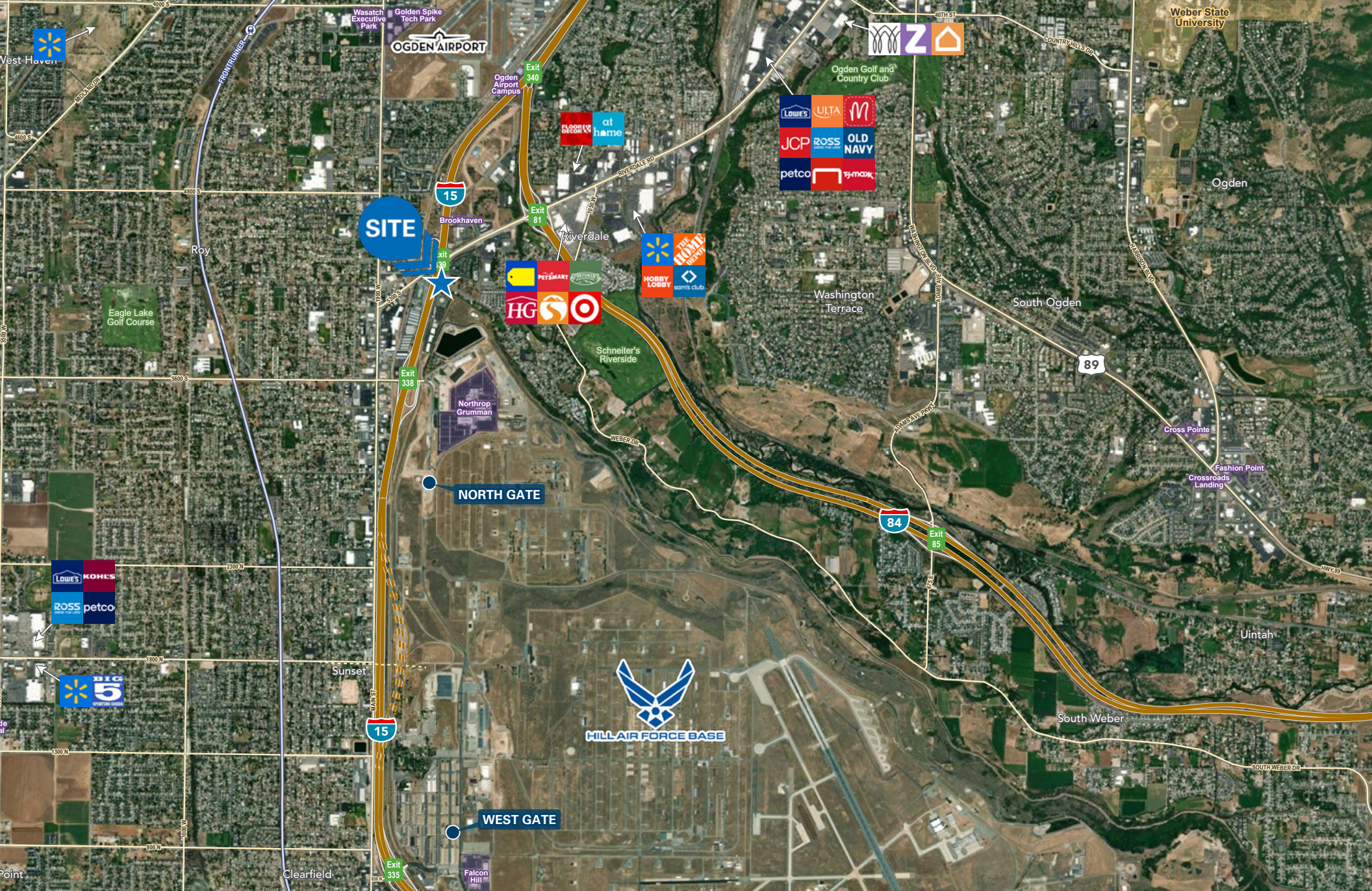


CHRIS FALK, CCIM, SIOR
cfalk@newmarkmw.com
direct 801.499.6514
[View Profile](#)

BRAXTON WILLIE, CCIM
bwillie@newmarkmw.com
direct 801.803.3334
[View Profile](#)

BRANSON WOOD
bwood@newmarkmw.com
direct 801.510.5207
[View Profile](#)

**FULL SERVICE
COMMERCIAL REAL ESTATE**
312 East South Temple
Salt Lake City, Utah 84111
Office 801.456.8800
www.newmarkmw.com



CHRIS FALK, CCIM, SIOR
 cfalk@newmarkmw.com
 direct 801.499.6514
[View Profile](#)

BRAXTON WILLIE, CCIM
 bwillie@newmarkmw.com
 direct 801.803.3334
[View Profile](#)

BRANSON WOOD
 bwood@newmarkmw.com
 direct 801.510.5207
[View Profile](#)

**FULL SERVICE
 COMMERCIAL REAL ESTATE**
 1410 S University Park Blvd, Ste 120
 Clearfield, Utah 84015
 Office 801.578.5580
www.newmarkmw.com