

BUILD TO SUIT OPPORTUNITY

# BECK NORTH CORPORATE PARK

CARTIER DRIVE, NOVI, MI



## PROPERTY FEATURES

- Up to 7.67 Acres
- Outstanding Build-To-Suit Opportunity Within Beck North Corporate Park, One of Novi's Premier International Corporate Campuses
- Join Notable Companies Such as Denso, Mando, Creform, BLM Group, Metalsa, Broad Ocean and More
- Close Proximity to Amenities and Shopping Destinations Including Twelve Oaks Mall and West Oaks Shopping Center
- Beck Road and Novi Road Interchanges Offer Quick, Convenient Access to I-96
- Zoned: Light Industrial



**EDWARD WUJEK**

Vice Chairman  
+1 248 351 2058  
edward.wujek@cbre.com

**KELLY CUBBIN**

Vice President  
+1 248 936 6852  
kelly.cubbin@cbre.com

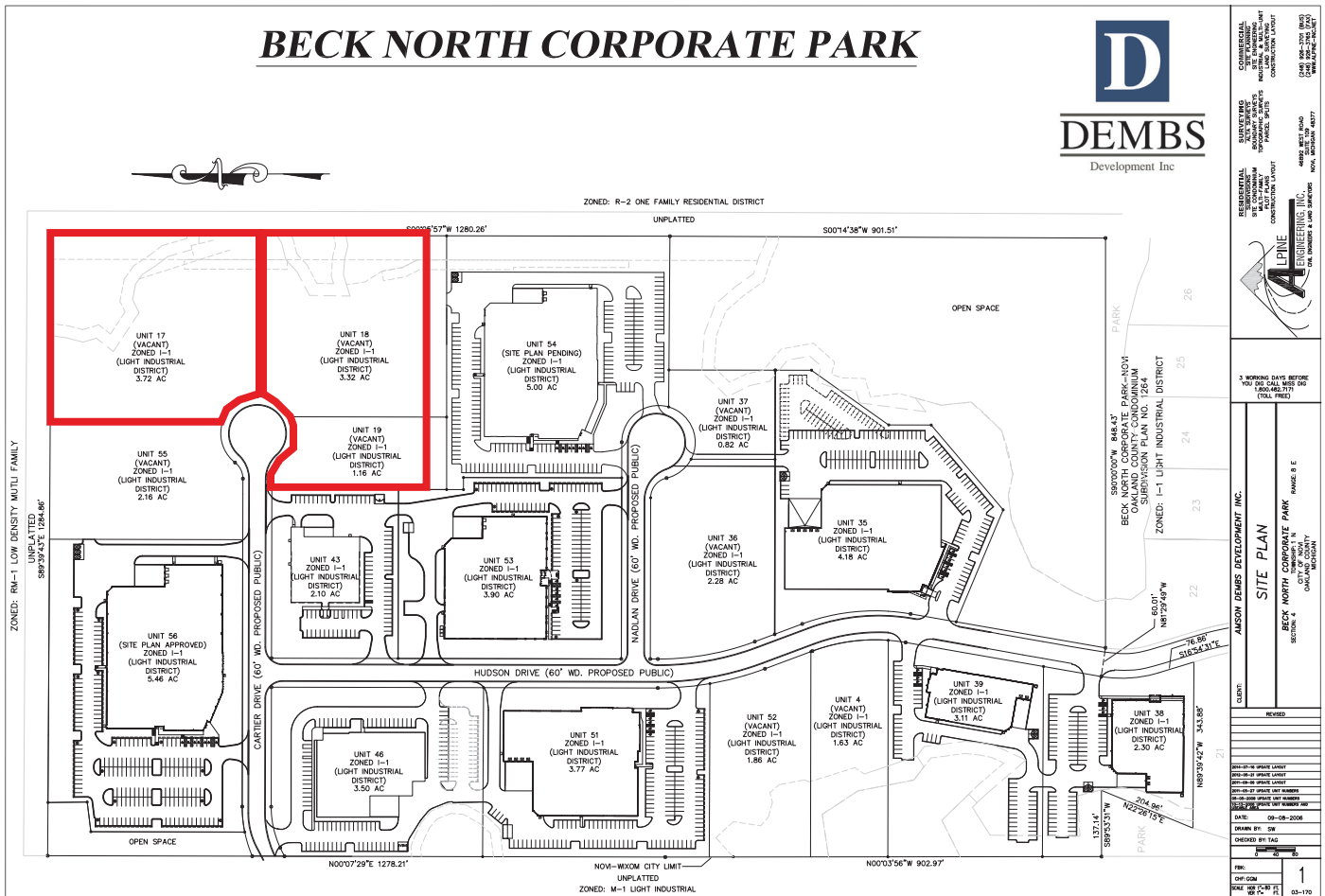
**CBRE**

# BUILD TO SUIT OPPORTUNITY

# BECK NORTH CORPORATE PARK

CARTIER DRIVE, NOVI, MI

SITE PLAN  
7.67 ACRES



**EDWARD WUJEK**  
Vice Chairman  
+1 248 351 2058  
edward.wujek@cbre.com

**KELLY CUBBIN**  
Vice President  
+1 248 936 6852  
kelly.cubbin@cbre.com

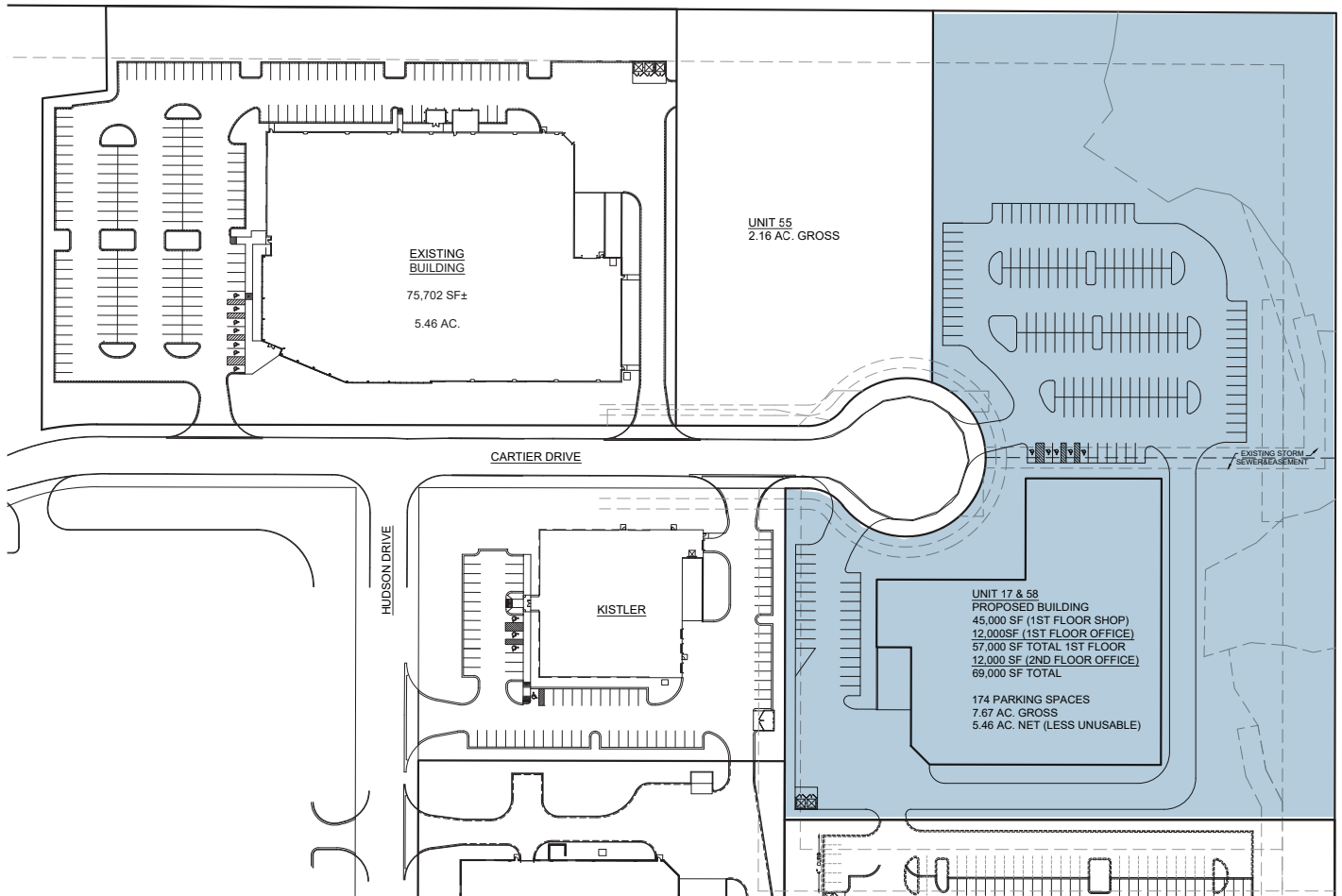


# BUILD TO SUIT OPPORTUNITY

# BECK NORTH CORPORATE PARK

CARTIER DRIVE, NOVI, MI

## CONCEPT SITE PLAN 7.67 ACRES



**EDWARD WUJEK**

Vice Chairman  
+1 248 351 2058  
edward.wujek@cbre.com

**KELLY CUBBIN**

Vice President  
+1 248 936 6852  
kelly.cubbin@cbre.com



BUILD TO SUIT OPPORTUNITY

# BECK NORTH CORPORATE PARK

CARTIER DRIVE, NOVI, MI

## AERIAL



© 2023 CBRE, Inc. All rights reserved. This information has been obtained from sources believed reliable, but has not been verified for accuracy or completeness. You should conduct a careful, independent investigation of the property and verify all information. Any reliance on this information is solely at your own risk. CBRE and the CBRE logo are service marks of CBRE, Inc. All other marks displayed on this document are the property of their respective owners. Photos herein are the property of their respective owners. Use of these images without the express written consent of the owner is prohibited.



**EDWARD WUJEK**

Vice Chairman  
+1 248 351 2058  
edward.wujek@cbre.com

**KELLY CUBBIN**

Vice President  
+1 248 936 6852  
kelly.cubbin@cbre.com

**CBRE**