



RETAIL FOR LEASE



12805 S REDWOOD ROAD | RIVERTON, UTAH 84065

PAIGE RETAIL PLAZA

Lease Rates:

- Drive Thru \$50.00 PSF (NNN)
- End Cap \$42.00 PSF (NNN)
- Inline \$37.00 PSF (NNN)
- NNN = \$6.50 PSF
- 1,700 - 10,000 Available for Lease

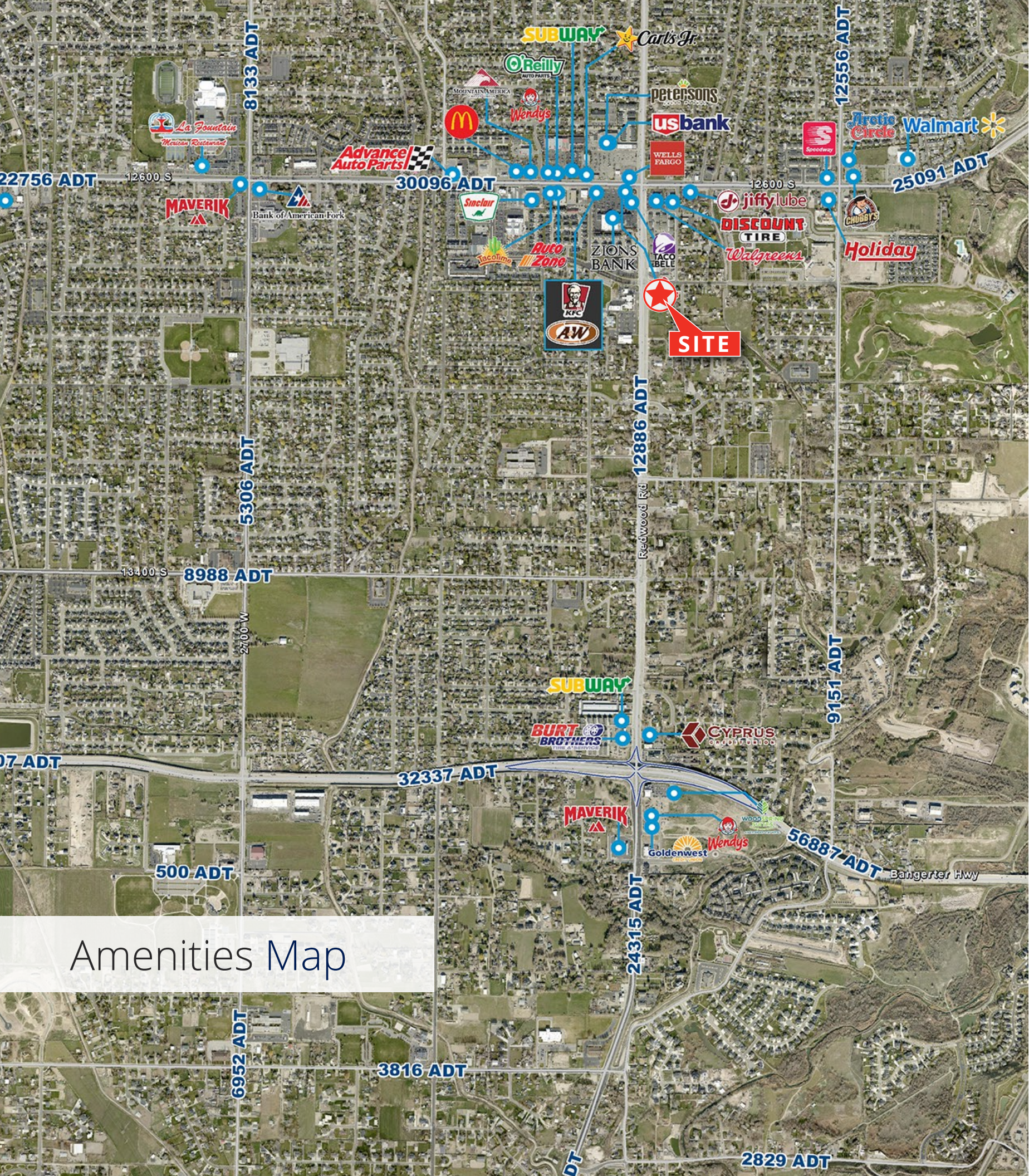
Property Highlights:

- Modern First Generation Build for National and Local Businesses
- Drive Thrus Available
- High Demand Location
- Adjacent To the Riverton City Building

Nearby Tenants:







Amenities Map

PAIGE RETAIL PLAZA



Demographics	1 Mile	3 Mile	5 Mile
Population			
2024 Population	11,276	80,361	268,976
2029 Projected	11,102	81,180	273,205
Households			
2024 Population	3,702	23,754	84,121
2029 Projected	3,738	24,676	87,767
Income			
2024 Median HHI	\$113,390	\$133,365	\$122,788
2024 Average HHI	\$137,735	\$166,269	\$156,581
Per Capita Income	\$44,656	\$49,296	\$48,902





RETAIL FOR LEASE

PAIGE RETAIL PLAZA

Alexis Osmond

+1 801 722 9999

alexis.osmond@colliers.com

Bryant Parker

+1 385 866 3007

bryant.parker@colliers.com

Brandon Fugal

+1 801 947 8300

brandon.fugal@colliers.com



This document has been prepared by Colliers for advertising and general information only. Colliers makes no guarantees, representations or warranties of any kind, expressed or implied, regarding the information including, but not limited to, warranties of content, accuracy and reliability. Any interested party should undertake their own inquiries as to the accuracy of the information. Colliers excludes unequivocally all inferred or implied terms, conditions and warranties arising out of this document and excludes all liability for loss and damages arising there from. This publication is the copyrighted property of Colliers and /or its licensor(s). © 2024. All rights reserved.

Colliers

6440 S. Millrock Dr., Suite 500

Salt Lake City, UT 84121

Main: +1 801 947 8300

colliers.com