



**± 1,910 SF of Medical Office Suites for Lease in Orange**

- Beautiful exterior renovation completed in 2021
- Within Walking Distance to St. Joseph Hospital and CHOC in Orange County
- Free on-site parking
- On-site engineers
- Excellent Access to the 22, 55, 57, and 5 Freeways

<b>Available Space</b>	<b>Floor</b>	<b>Size (SF)</b>
Suite 210-B	2nd Floor	± 1,910 SF

**For leasing information please contact:**

**Eileen Doody**

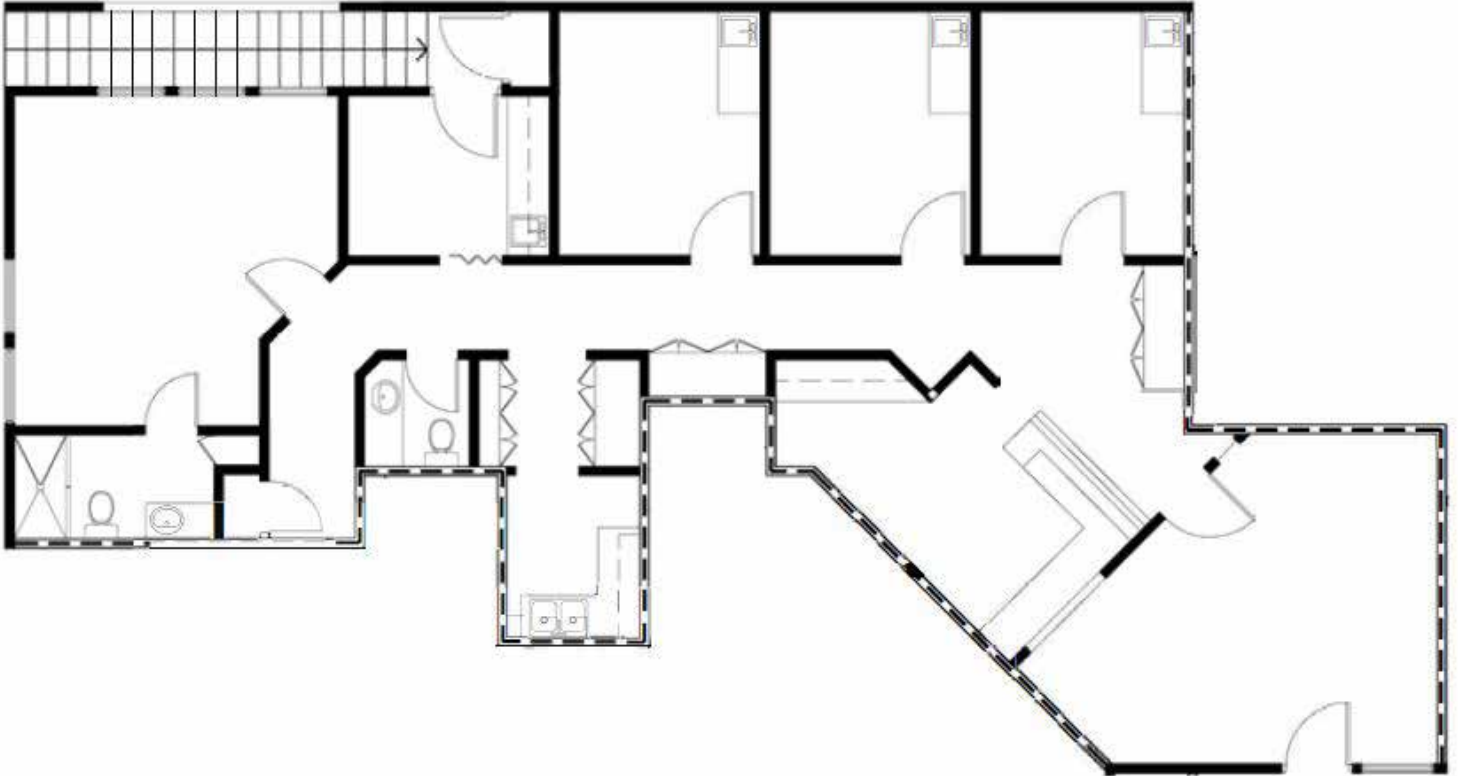
Principal, Healthcare, Leasing and Brokerage  
eileen.doody@avisonyoung.com

D: 949.390.5506

CA DRE Lic. #00965140

1 Park Plaza, Suite 100  
Irvine, CA 92614  
avisonyoung.com

**Suites 210-B | ± 1,910 SF**



**KEY PLAN**

**Medical Office Space for Lease**

725 West La Veta  
Orange, CA 92868

