



**DAVID SOKOLOWSKI**  
LIC. ASSOCIATE REAL ESTATE BROKER  
212.380.2418 | 917.213.4668  
dsokolowski@cbwarburg.com



**MATTEO ROMANI**  
LICENSED REAL ESTATE SALESPERSON  
212.439.4516 | 929. 615.4879  
mromani@cbwarburg.com

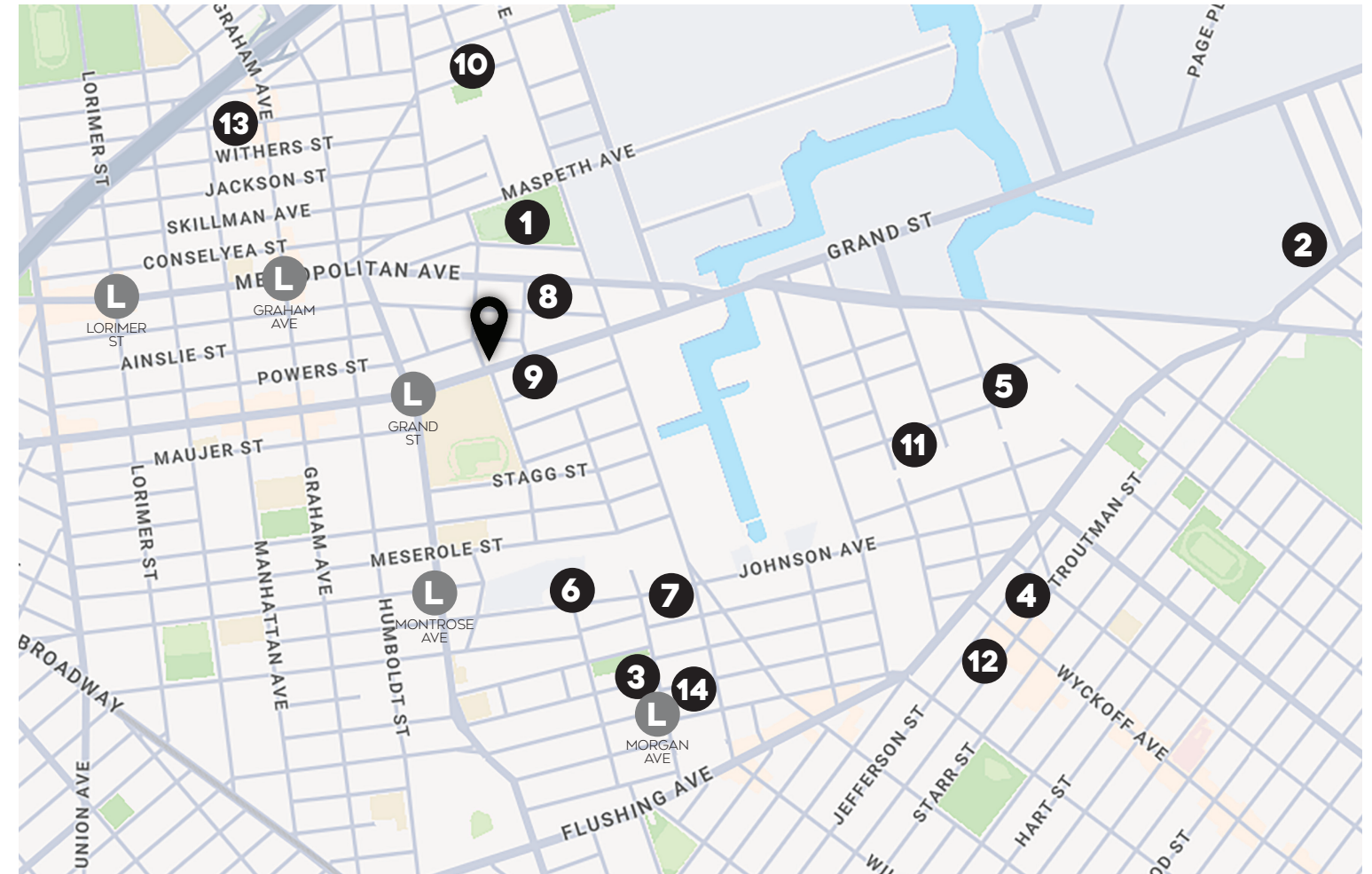
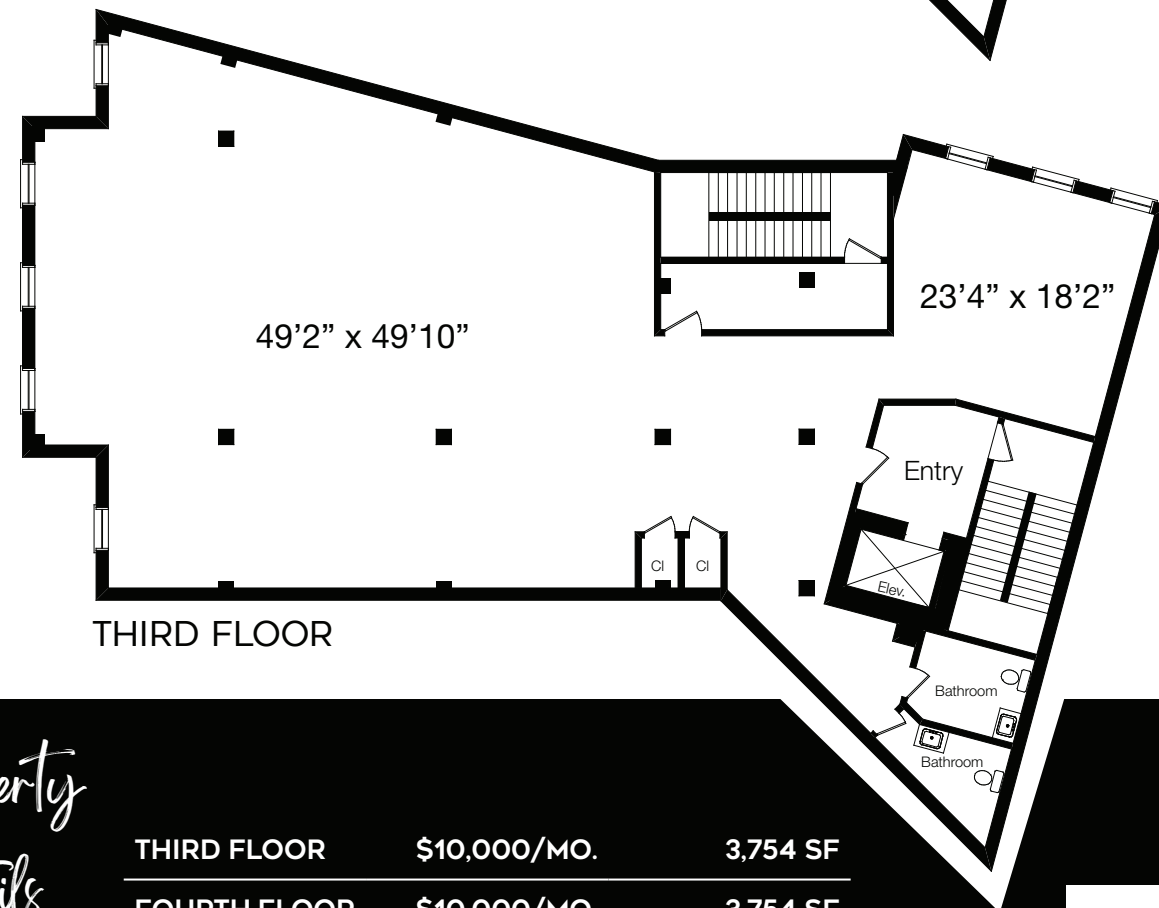
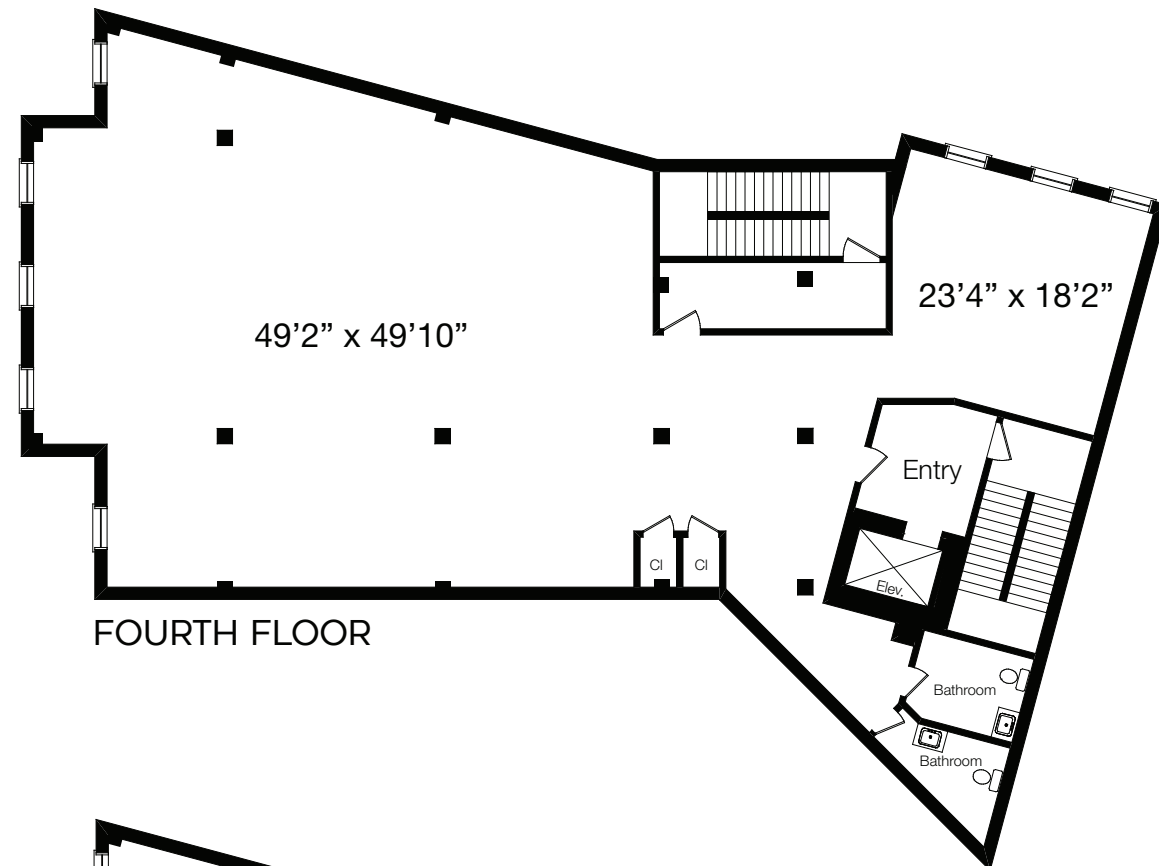
THE  
**SOKO**  
TEAM



**COLDWELL BANKER**  
**WARBURG**

*Two Commercial Loft Spaces*  
**14 OLIVE STREET**

The property information herein is derived from various sources that may include, but not be limited to, county records and the Multiple Listing Service, and it may include approximations. Although the information is believed to be accurate, it is not warranted and you should not rely upon it without personal verification. Affiliated real estate agents are independent contractor sales associates, not employees. ©2024 Coldwell Banker. All Rights Reserved. Coldwell Banker and the Coldwell Banker logo are trademarks of Coldwell Banker Real Estate LLC. The Coldwell Banker® System is comprised of company owned offices which are owned by a subsidiary of Anywhere Advisors LLC and franchised offices which are independently owned and operated. The Coldwell Banker System fully supports the principles of the Fair Housing Act and the Equal Opportunity Act.



### In The Neighborhood

- 1 Cooper Park
- 2 Knockdown Center
- 3 Roberta's
- 4 The Bushwick Collective
- 5 Area 53 Adventure Park
- 6 Netflix Studios
- 7 Ichiran
- 8 Grimm Artisanal Ales
- 9 The Brewery Recording Studio
- 10 Brooklyn Steel
- 11 Brooklyn Mirage / Avant Gardner
- 12 Kings County Brewers Collective
- 13 Twinkle Playspace
- 14 Sey Coffee

### Property Details

THIRD FLOOR	\$10,000/MO.	3,754 SF
FOURTH FLOOR	\$10,000/MO.	3,754 SF

These brand-new commercial lofts, offering over 3,750 SF of versatile space, are ideal for businesses seeking a prime location. The open floor plan, featuring 10-ft ceilings and large windows, provides a bright and airy environment. Each loft includes two marble-tiled bathrooms. Situated just 1.5 blocks from the Grand St L Train station, the property offers excellent transit access, ensuring easy commutes to Manhattan, Brooklyn, and Queens. Perfect for a variety of commercial uses.

