

FOR LEASE | PROFESSIONAL OFFICE SPACE

1000 MARKET STREET, BUILDING 2, PORTSMOUTH, NH 03801



PROPERTY DETAILS

1000 Market Street is one of Portsmouth's premier office buildings. Located just off Exit 7 of Interstate 95, the property is easily accessible to all major transportation routes and Downtown Portsmouth.

- 5,100± SF office suite available on the 1st floor
- Features include large private offices, a conference room, and newly upgraded interior
- LEASE RATE: \$25.00/SF, Full Service Gross

[VIEW VIRTUAL TOUR](#)



FOR LEASE | PROFESSIONAL OFFICE SPACE

1000 MARKET STREET, BUILDING 2, PORTSMOUTH, NH 03801



PROPERTY SUMMARY

AVAILABLE SPACE	First Floor - 5,100± SF
AVAILABILITY	Immediately
PARKING	Approximately 20 non-designated parking spaces in the rear of the building are included in the rent.
ZONING	Office/Research
RESTROOMS	First Floor: Private
RESTROOMS	First Floor: Private Third Floor: In-common



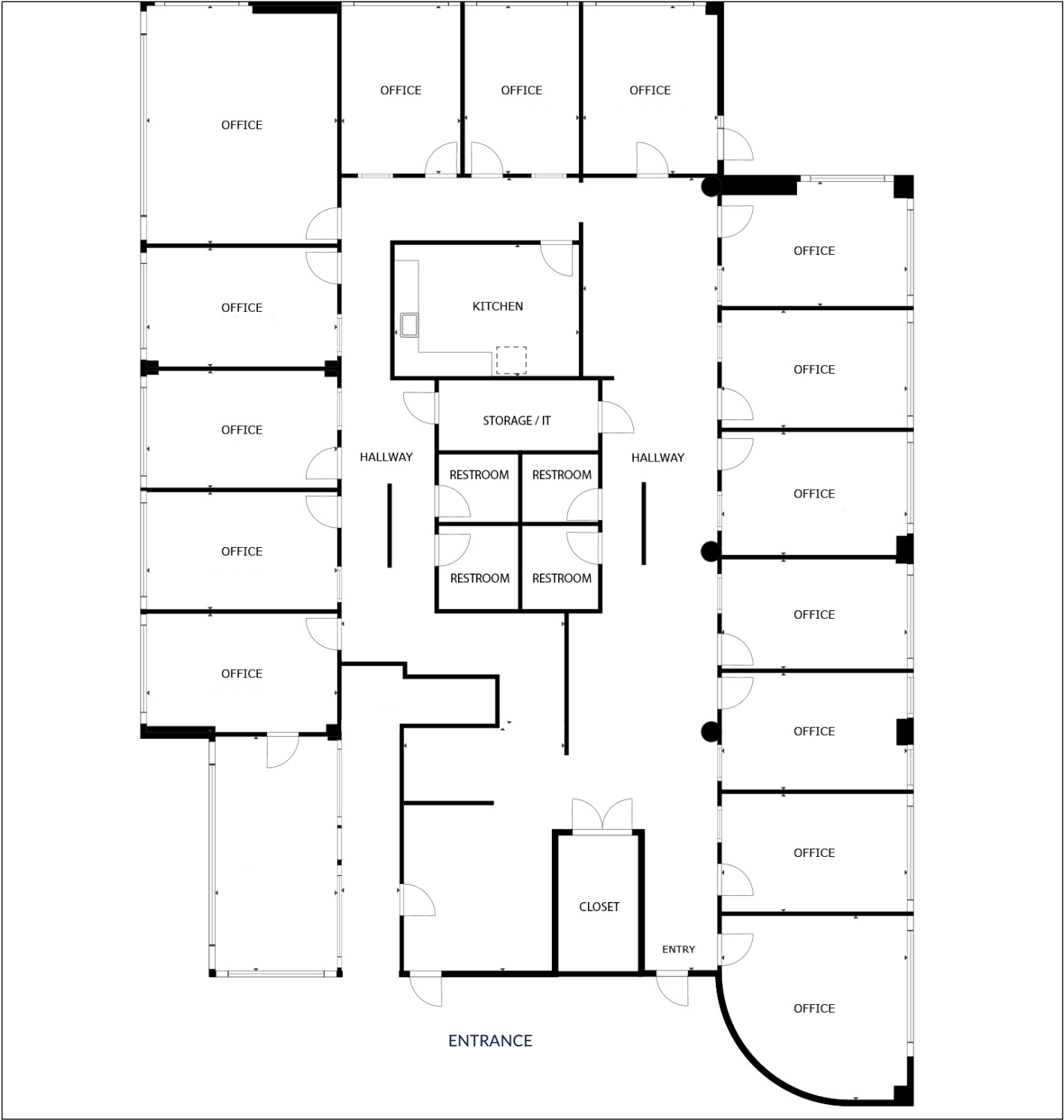
FOR LEASE | PROFESSIONAL OFFICE SPACE

1000 MARKET STREET, BUILDING 2, PORTSMOUTH, NH 03801



FLOOR PLAN

5,100± SF unit with potential to subdivide down to 2,550± SF.



Floor plan is for illustrative purposes only, are not to scale and should be viewed with this in mind and used as a guide only.

FOR LEASE | PROFESSIONAL OFFICE SPACE

1000 MARKET STREET, BUILDING 2, PORTSMOUTH, NH 03801



LOCATION DESCRIPTION

Portsmouth is one of the most recognized small cities and business epicenters in Northern New England. With direct access off of I-95 and New Hampshire's Spaulding Turnpike and within an hour of Boston, Manchester and Portland, businesses are able to hire employees from a large demographic area. Portsmouth is consistently ranked one of the most desirable places to live nationwide and is home to a charming and historic downtown, The Portsmouth International Airport at Pease (PSM), and the C&J Bus Station with non-stop daily routes to Boston and New York. Downtown Portsmouth is thriving, walkable community with numerous businesses, retail shops, restaurants, and wonderful waterfront views of Portsmouth Harbor.



CONTACT US



CHRISTIAN STALLKAMP
Senior Broker, Partner

+1 603.570.2696 D
+1 603.828.3818 C
cstallkamp@boulos.com



KATHERINE GEMMECKE
Senior Associate

+1 603.570.2685 D
+1 603.973.4256 C
kgemmecke@boulos.com

©2025 Boulos Holdings, LLC d/b/a The Boulos Company. All rights reserved. This information has been obtained from sources believed reliable, but has not been verified for accuracy or completeness. You should conduct a careful, independent investigation of the property and verify all information. Any reliance on this information is solely at your own risk. The Boulos Company and The Boulos Company logo are service marks of The Boulos Company, Inc. and Boulos Holdings, LLC. All other marks displayed on this document are the property of their respective owners. Photos herein are the property of their respective owners. Use of these images without the express written consent of the owner is prohibited.