

177
MEETING

TARGET

KING STREET

THE
CHARLESTON PLACE
HISTORIC DOWNTOWN

MEETING STREET

CHARLESTON CITY MARKET

177 MEETING STREET, Charleston, SC

CLASS A OFFICE SPACE | Chase Bank Building | 2,582 - 23,815 SF For Lease

CONTACT US

Charlie Carmody
Senior Vice President
+1 843 577 1155
charles.carmody@cbre.com

Ryan Carmody
Vice President
+1 843 577 1162
ryan.carmody@cbre.com

CBRE

PROPERTY HIGHLIGHTS



Move-in ready office space with non-traditional shorter term lease option (1-3 years)



Centrally located- across the street from the iconic Charleston City Market & the Charleston Place Hotel



Current businesses include Chase Bank, Fusion, Peoplelease, Subway, Palmetto Barber + many more



Within a mile radius includes the new Target, the Peninsula Grill, Meeting at Market Pub, Hyman's Seafood Grill, FIG, 82 Queen, SNOB + many more of Charleston's classic's to impress Client's or for a wind-down lunch break

\$42.00 - \$45.00

PSF

2,582 - 23,815 SF

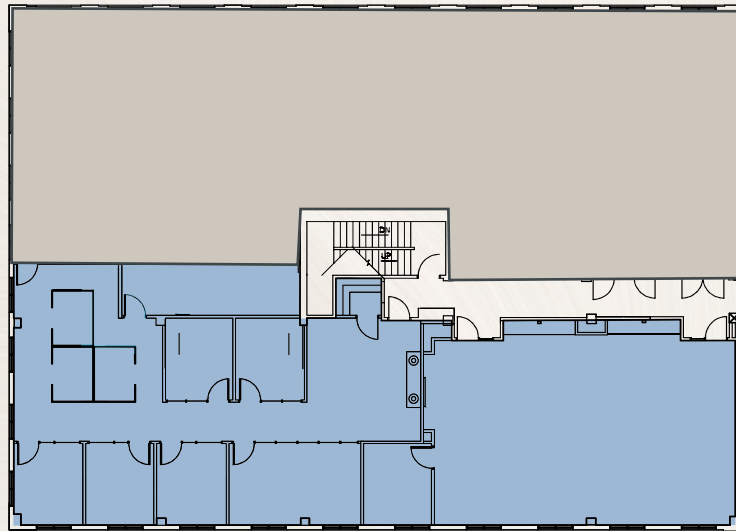
AVAILABLE



2ND FLOOR		
SUITE 220:	4,206 RSF	\$42.00 /SF
SUITE 240:	2,582 RSF	\$42.00 /SF

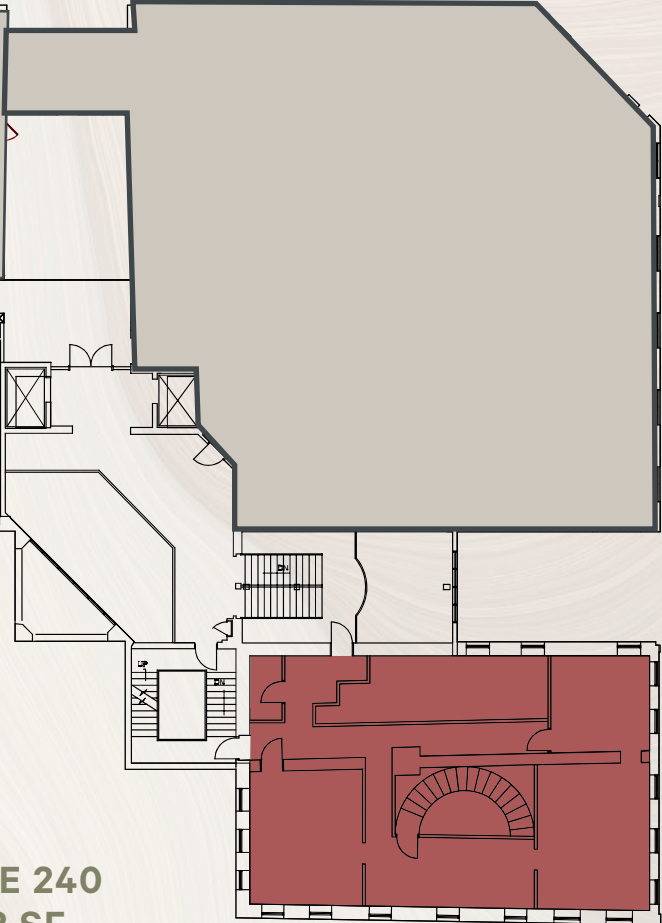


SUITE 220
4,206 SF



LEASED

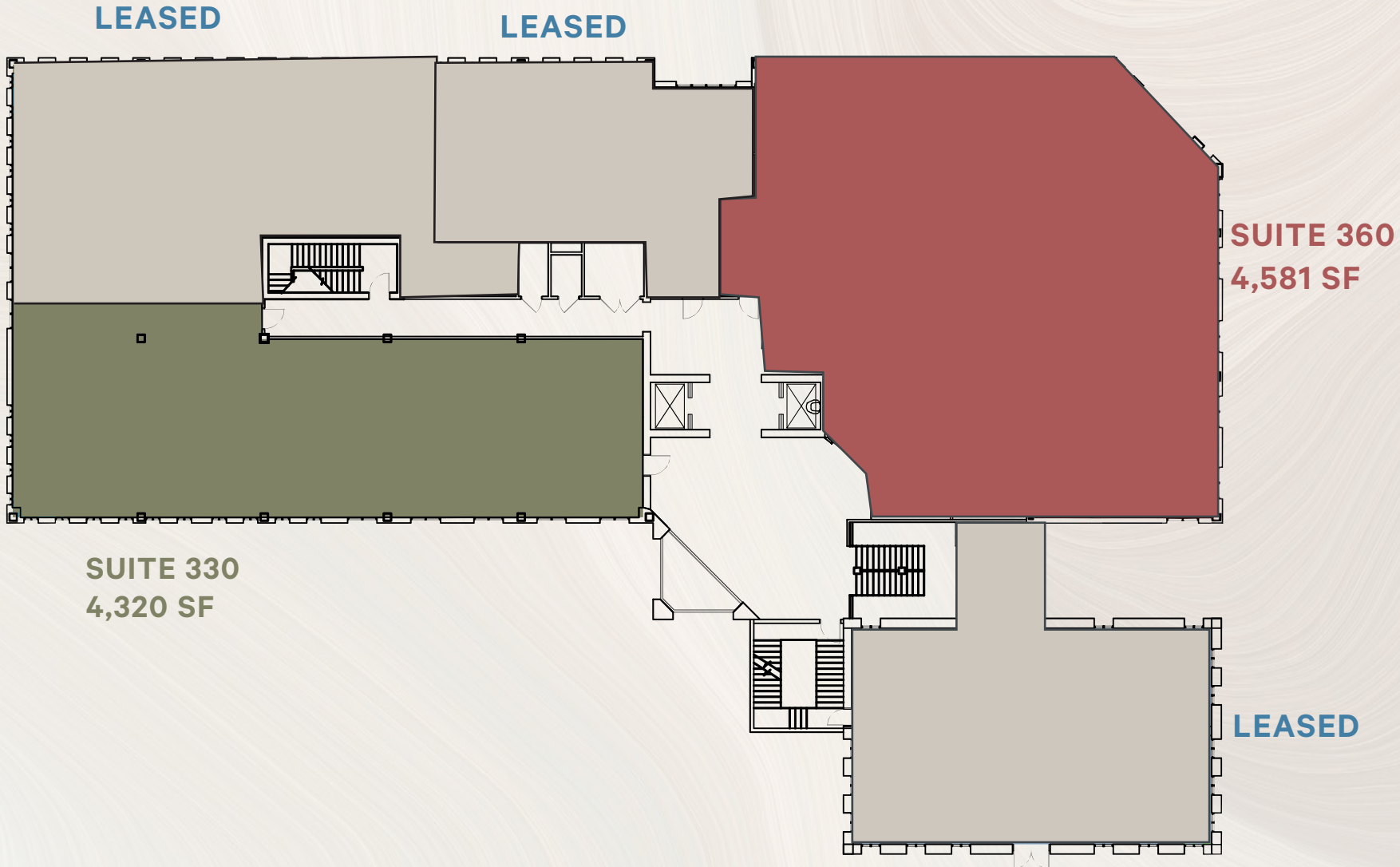
SUITE 240
2,582 SF



LEASED

3RD FLOOR

SUITE 330:	4,320 RSF	\$42.00 /SF
SUITE 360:	4,581 RSF	\$45.00 /SF



4TH FLOOR

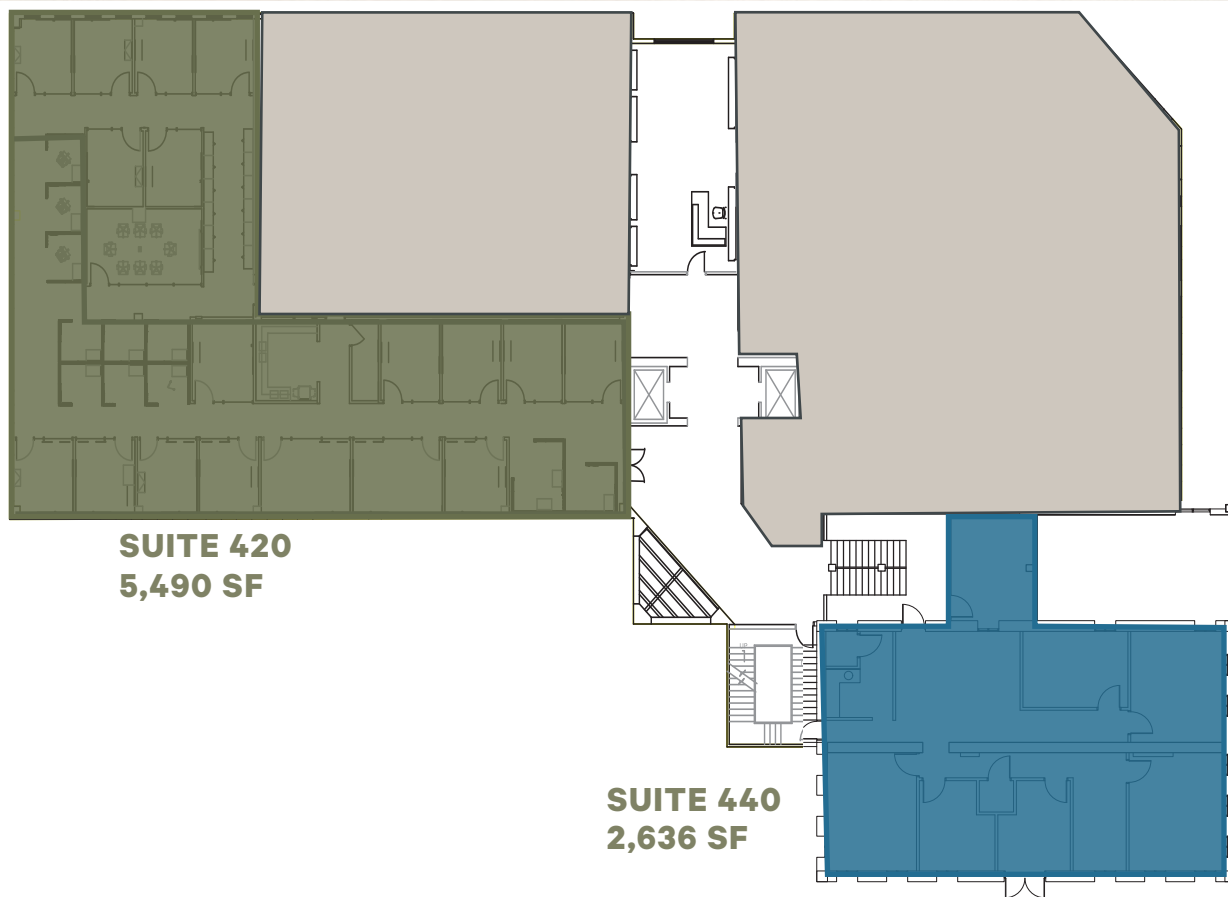
SUITE 420: 5,490 RSF \$42.00 /SF

SUITE 440: 2,636 RSF \$42.00 /SF



LEASED

LEASED





177
MEETING

CONTACT:

Charlie Carmody
Senior Vice President
+1 843 577 1155
charles.carmody@cbre.com

Ryan Carmody
Vice President
+1 843 577 1162
ryan.carmody@cbre.com

© 2026 CBRE, Inc. All rights reserved. This information has been obtained from sources believed reliable, but has not been verified for accuracy or completeness. You should conduct a careful, independent investigation of the property and verify all information. Any reliance on this information is solely at your own risk. CBRE and the CBRE logo are service marks of CBRE, Inc. All other marks displayed on this document are the property of their respective owners, and the use of such logos does not imply any affiliation with or endorsement of CBRE. Photos herein are the property of their respective owners. Use of these images without the express written consent of the owner is prohibited.