



# Now Leasing

## 76 S. Main St. Akron, Ohio

Watch Property Tour



Contact Us

**Marissa Rufe**  
330.204.3873  
marissa.rufe@naipvc.com

**G.F. "Geoff" Coyle, III, SIOR**  
330.328.8150  
gcoyle@naipvc.com



**NAMING RIGHTS  
AVAILABLE**

# Property Overview

## Building Size

366,261 SF

## Floors / Typical Floor Size

19 floors with amazing views of Downtown Akron

~18,000 SF floor plates (divisible to 2,000 SF)

Spacious Executive Suite

Move-In Ready Suites Coming Soon!

## Parking

Attached parking garage with plentiful parking

## Retail | Amenities

Retail spaces, cafeteria, 150-person conference hall with breakout rooms, 24/7 security, fitness center with locker rooms, access to the

[Downtown Skywalk System](#)

## Location

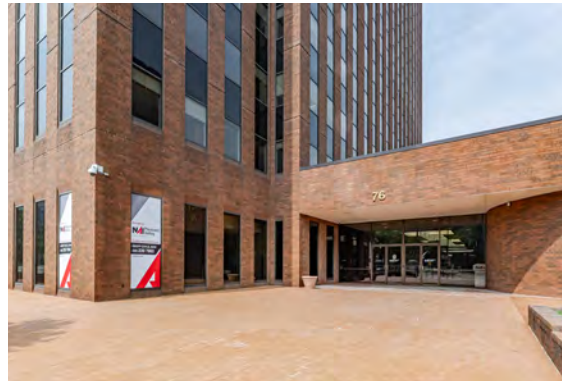
In the heart of Historic Downtown Akron, close to major highways, including I-76, I-77, I-80, and SR-8

## High Identity Profile

Perfect opportunity for Corporate Headquarters or Government Institution



# Entrance, Security, and Elevators



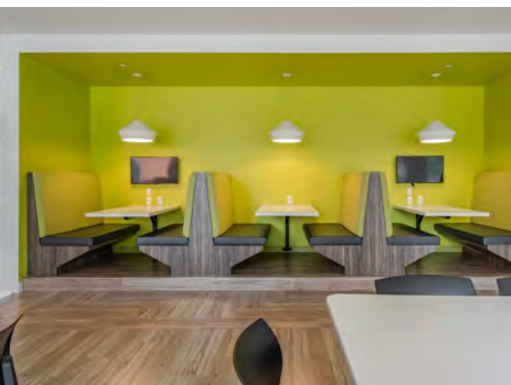
- Eight elevators - including 1 freight
- 24/7 security with on-site guard and CCTV surveillance



# Cafeteria with Commercial Kitchen

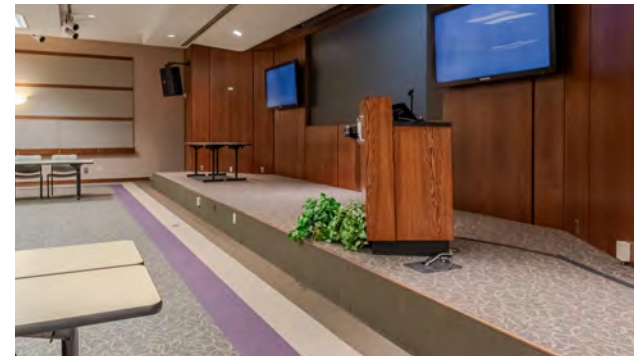


- Remodeled in 2020
- 221-person occupancy
- Fully furnished dining room and commercial kitchen
- Possibilities include: table service, counter service, self-service, buffet, grab-n-go, fast food, ghost kitchen, etc.





# Auditorium and Conference Hall



- 150-person occupancy
- Registration lobby, coat room, raised stage area with podium
- Partition wall
- Breakout rooms
- Lower level with loading dock access





# Akron Plaza | Retail Spaces



“Akron Plaza” is a street-level retail corridor linking 76 S. Main to 50 S. Main. Ambiance includes polished brick paving, expansive skylights, and wrought-iron café-style furnishings.

The plaza provides direct access to the parking deck, the Downtown Skywalk System, and Cascade Plaza.



# Akron Plaza - Available Retail Space



■ Office  
■ Food  
■ Retail

UNIT 1	6,762 SF
UNIT 2	5,181 SF
UNIT 3	12,277 SF
UNIT 4	OCCUPIED
UNIT 5	1,082 SF
UNIT 6	1,228 SF
UNIT 7	1,170 SF
UNIT 8	1,035 SF
UNIT 9	930 SF
UNIT 10	482 SF
UNIT 11	STORAGE
UNIT 12	806 SF
UNIT 13	1,204 SF
UNIT 14	1,823 SF

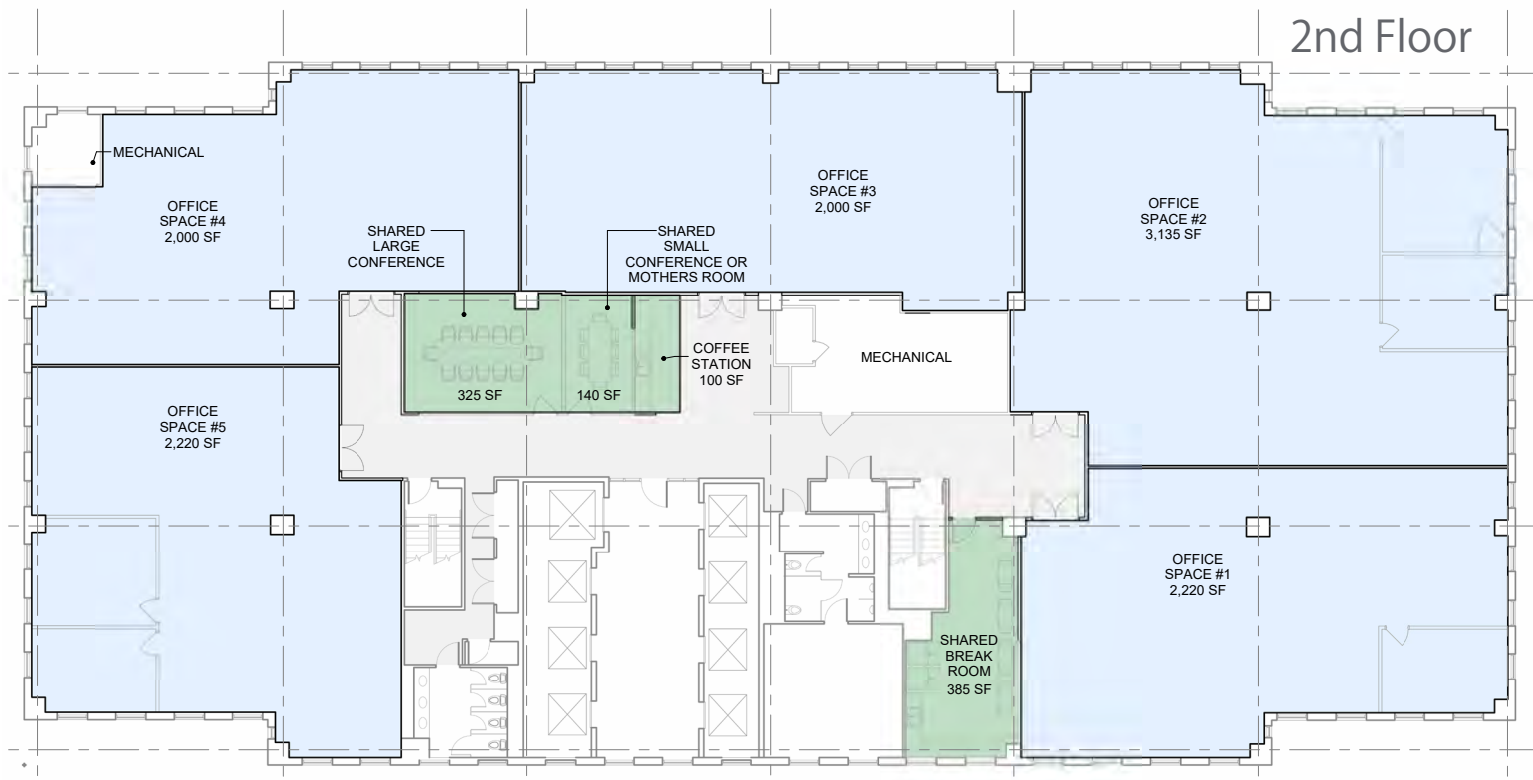


# Executive Suite - 19th Floor





# Move-In Ready Suites - Available Soon!



Unit 1 2,220 SF

Unit 2 3,135 SF

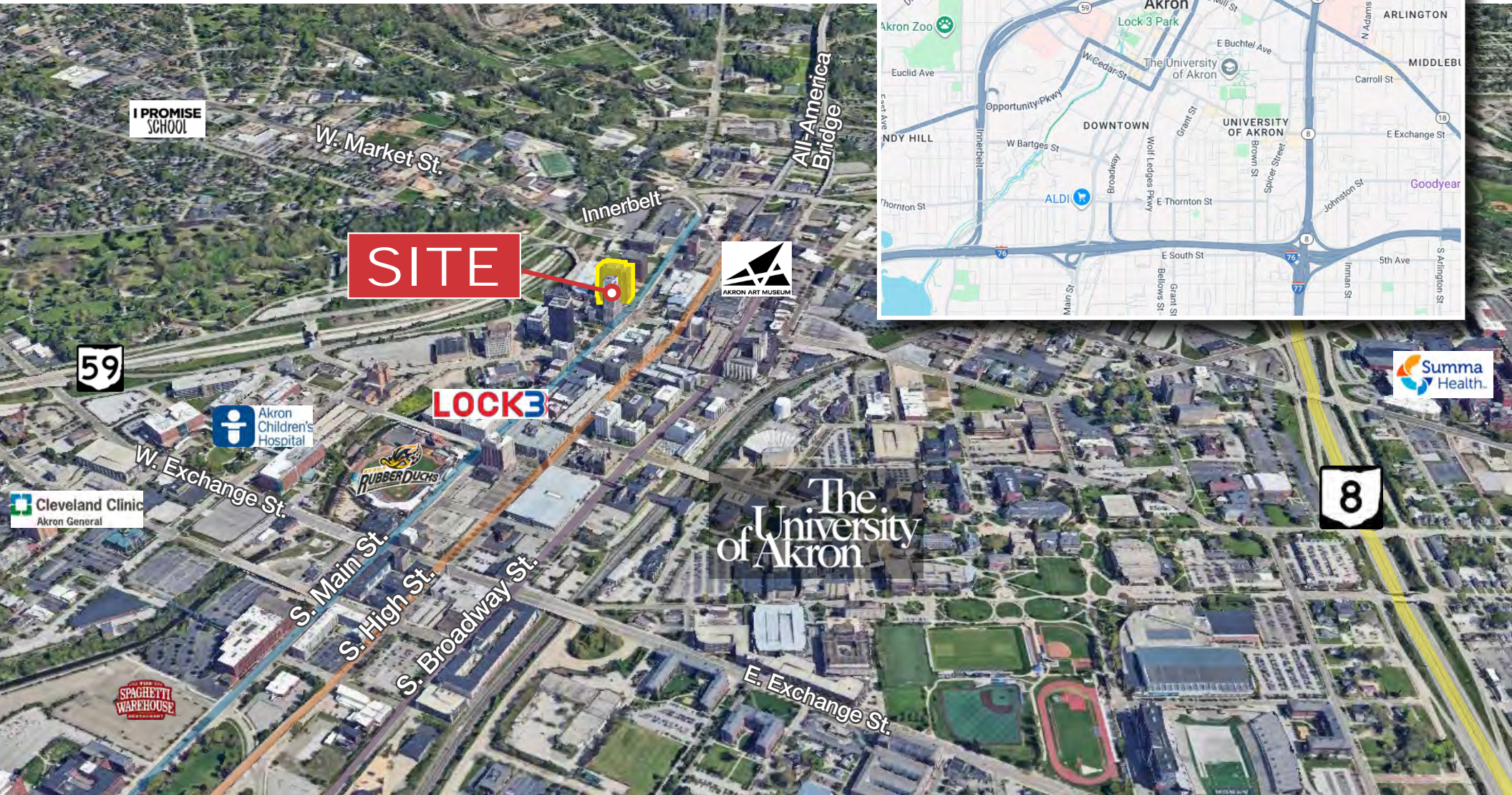
Unit 3 2,000 SF

Unit 4 2,000 SF

Unit 5 2,220 SF



# Location







**NAIPleasant Valley**  
COMMERCIAL REAL ESTATE SERVICES, WORLDWIDE



**Pleasant Valley**  
CORPORATION

Construction • Real Estate • Facility & Property Management

**Watch Property Tour**



Marissa Rufe  
330.204.3873

[marissa.rufe@naipvc.com](mailto:marissa.rufe@naipvc.com)



G.F. "Geoff" Coyle, III, SIOR  
330.328.8150

[gcoyle@naipvc.com](mailto:gcoyle@naipvc.com)

NOWARRANTYORREPRESENTATION,EXPRESSORIMPLIED,ISMADEASTO THEACCURACYOFTHEINFORMATIONCONTAINEDHEREIN,ANDTHESAMEISSUBMITTEDSUBJECTTOERRORS,OMISSIONS,CHANGE OFPRICE,RENTALOROTHERCONDITIONS,PRIORSALE,LEASEORFINANCING, ORWITHDRAWALWITHOUTNOTICE,ANDOF ANYSPECIAL LISTINGCONDITIONSIMPOSEDBYOURPRINCIPALS NOWARRANTIESORREPRESENTATIONSAREMADEASTO THECONDITION OFTHEPROPERTY ORANYHAZARDSCONTAINED THEREINAREANYTOBEIMPLIED.