

2604 3RD STREET

FOR LEASE | GROUND FLOOR CREATIVE OFFICE SPACE IN DOGPATCH

TCP
TOUCHSTONE
COMMERCIAL PARTNERS



WWW.TCPRE.COM

ETHAN MANN

C 415.990.9127

ethan@tcpre.com DRE # 02223262

GEORGE FARLEY

C 415.994.5767

george@tcpre.com DRE # 02233755

2604 THIRD STREET

PROPERTY SUMMARY

ADDRESS

2604 3rd Street, San Francisco, CA 94107

AVAILABLE SPACE

Ground Floor: +/- 1,238 Square Feet

RENTAL RATE

Negotiable

AVAILABLE

Immediately



BUILDING ATTRIBUTES

- + Open Floor Plan
- + Original Hardwood Floors Throughout
- + Patio and Concrete Basement Below
- + Full Kitchen w/ Stove & Breakroom
- + One (1) Restroom w/ Shower
- + Abundant Natural Light
- + Fantastic Dogpatch Location Directly Adjacent to I-280 on Ramp, Caltrain, Muni & Nearby Amenities



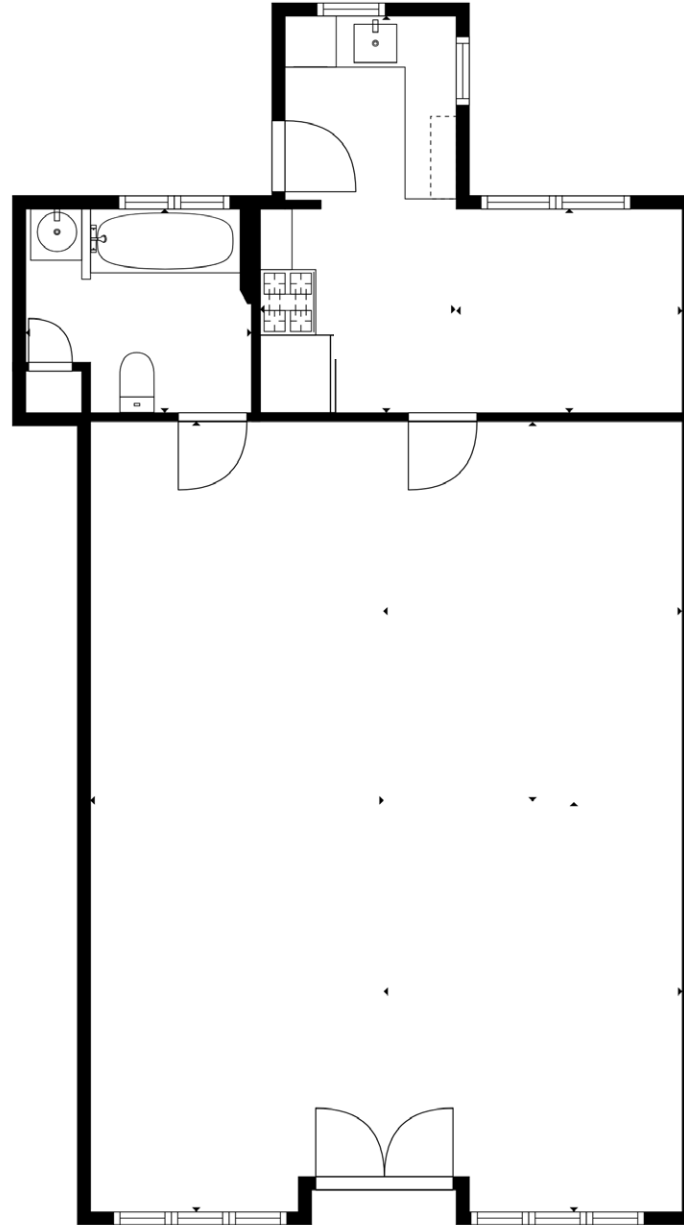
2604 THIRD STREET



2604 THIRD STREET

Floor Plans

Ground Floor: +/- 1,238 Square Feet



2604 THIRD STREET

LOCATION OVERVIEW

Desirable Dogpatch location, walkable to public transportation and to nearby amenities.



03 MIN to 3rd St Muni
13 MIN to 22nd St Caltrain
20 MIN to Chase Center



05 MIN to Potrero Hill
10 MIN to Mission District
10 MIN to SOMA



02 MIN to 280 On-Ramp
05 MIN to 101 On-Ramp
05 MIN to 80 On-Ramp



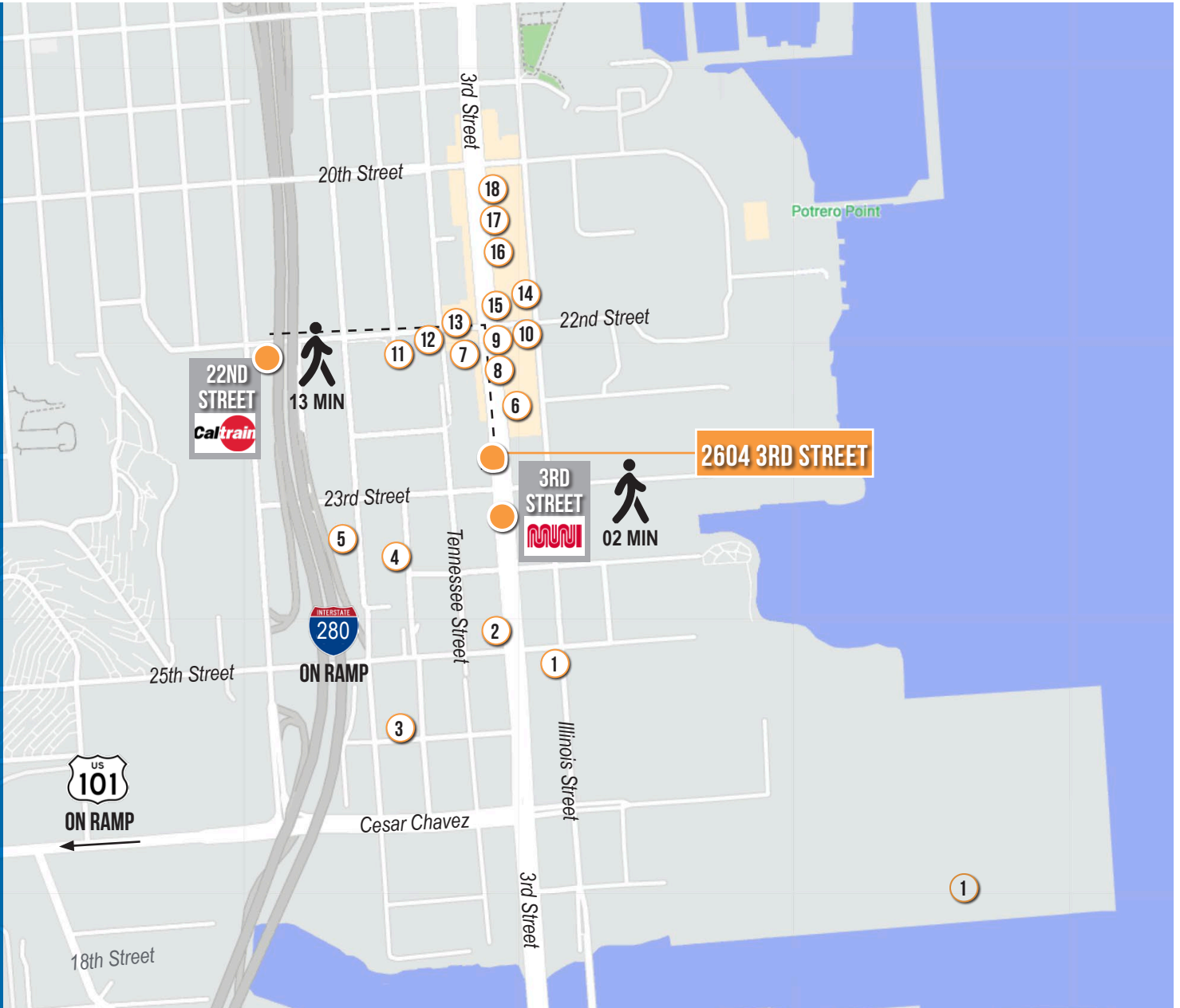
2604 THIRD STREET

NEARBY AMENITIES

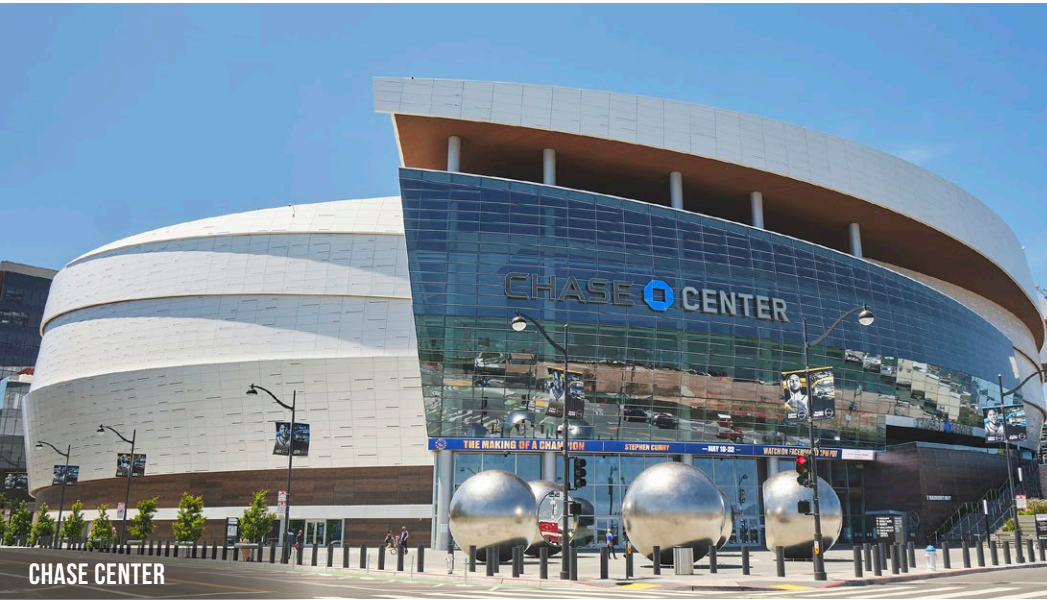
- 1.....Tacos El Flaco
- 2.....Shell
- 3.....Harmonic Brewing
- 4.....Philz Coffee
- 5.....Biscuit Bender
- 6.....Dogpatch Boulders
- 7.....Hard Knox Cafe
- 8.....Magnolia Brewing
- 9.....Mr. and Mrs. Miscellaneous
- 10.....Mainstay Markets
- 11.....Honeybear Boba
- 12.....Piccino
- 13.....Just For You Cafe
- 14.....Olivier's Butchery
- 15.....Triple Aught Design
- 16.....Long Bridge Pizza Co.
- 17.....Neighbor Bakehouse
- 18.....The Plant Cafe Organic

NEARBY TRANSPORTATION

- 1.....3rd Street Lightrail Muni
- 2.....22nd Street Caltrain Station



2604 THIRD STREET



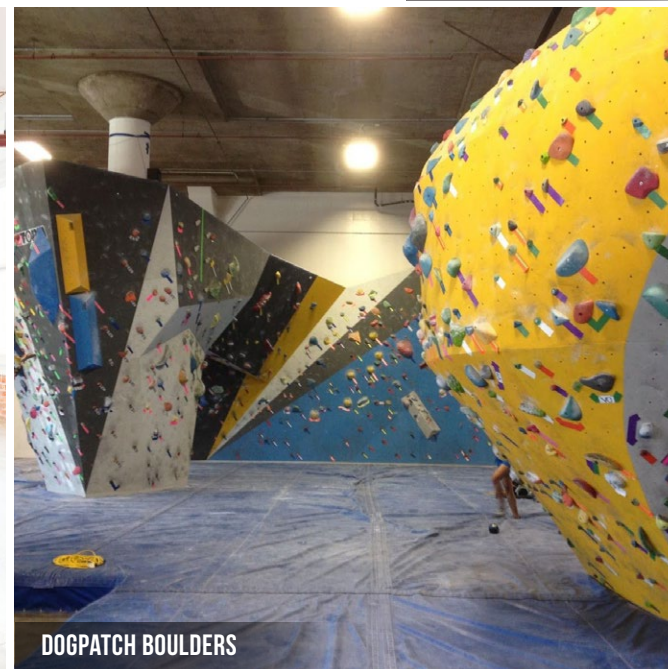
CHASE CENTER



HARMONIC BREWING



THE PLANT CAFE ORGANIC



DOGPATCH BOULDERS



MAINSTAY MARKET

2604 THIRD STREET



Corp. Lic. 01112906
www.tcppe.com

ETHAN MANN

C 415.990.9127

ethan@tcppe.com DRE # 02223262

GEORGE FARLEY

C 415.994.5767

george@tcppe.com DRE # 02233755

This document has been prepared by Touchstone Commercial Partners for advertising and general information only. Touchstone Commercial Partners makes no guarantees, representations or warranties of any kind, expressed or implied, regarding the information including, but not limited to, warranties of content, accuracy and reliability. Any interested party should undertake their own inquiries as to the accuracy of the information. Touchstone Commercial Partners excludes unequivocally all inferred or implied terms, conditions and warranties arising out of this document and excludes all liability for loss and damages arising there from. This publication is the copyrighted property of Touchstone Commercial Partners and/or its licensor(s). ©2026. All rights reserved.