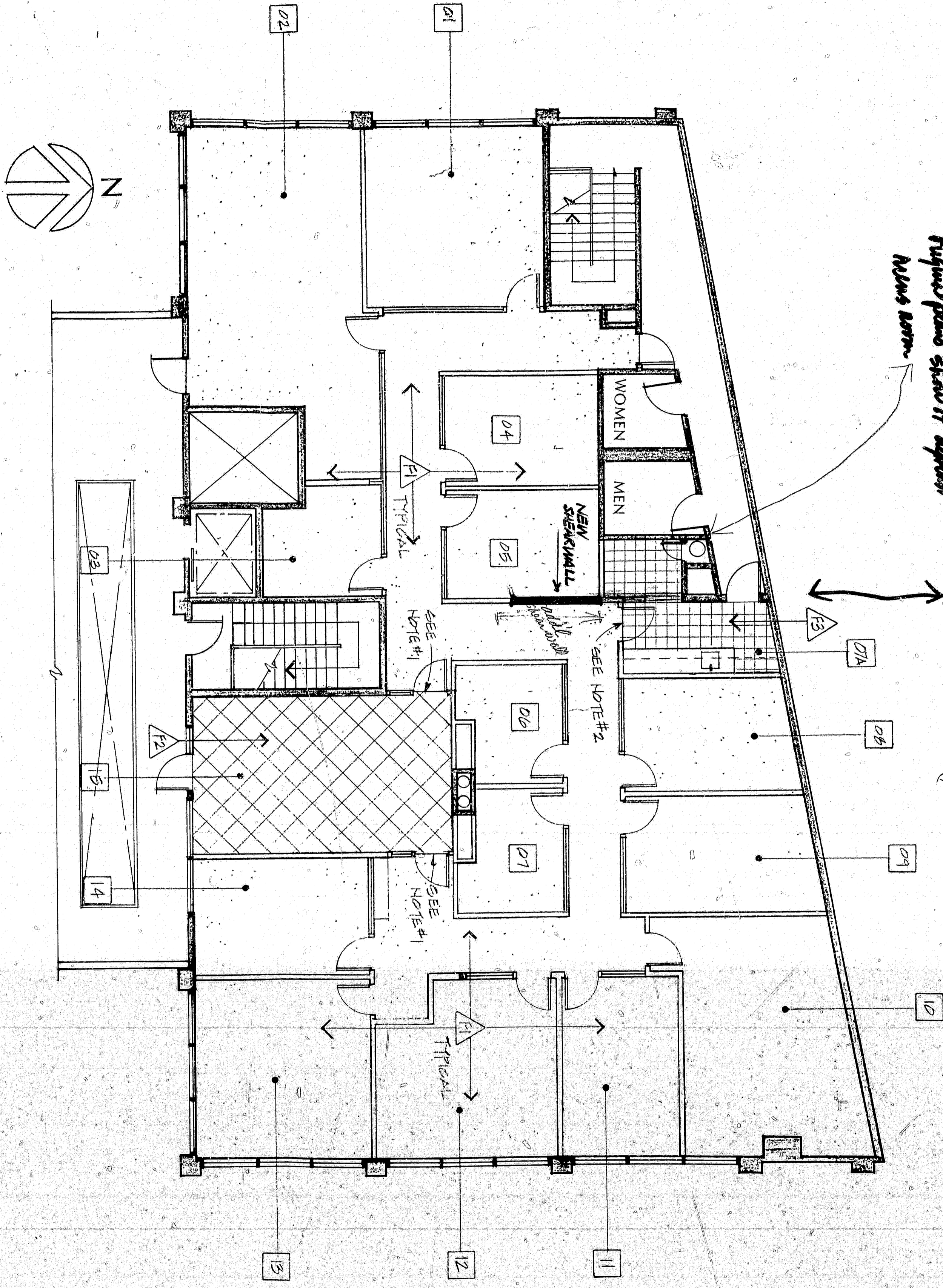


Please note location of shear wall as it appears on these plans. This plan shows it against new room.

Where shear wall was (painted in area.)



FLOOR FINISH SCHEDULE

SYMBOL	DESCRIPTION
FL	CARPET - BEAUFORT MILLS INC. 4 QUARTZ 240 OXFORD STREET, COLOR: SAND-730 TEAL, PILE: 100% DUTCH ANTON X-LITE, WIDTH: 12 FT, INSTALL OVER 3/8" NOVA PAD
FE1	CARPET - BEAUFORT MILLS INC. 4 QUARTZ VIKRAGE, COLOR: 412-7300 REFLECTION, PILE: 100% DUTCH ANTON X-LITE, WIDTH: 12 FT, INSTALL OVER 3/8" NOVA PAD.
FE2	VINYL COMPOSITION TILE - ARMSTRONG EXCELON TILE, IMPERIAL MODERN # 51558 SANDWICH TILE, WIDTH: 12 X 12, GAUGE: 1/8", FEDERAL SPEC: 55-T-212B, FIVE IX, COND: 1
VE3	VINYL BASE - BURKE, TOP SET BASE # 5175-HONEY TYPICAL @ ALL OFFICES, CORRIDORS & COPY ROOM
WD	WOOD BASE - GILSON MILLED, OAK, SEE DETAIL SHEET # AT RECEPTION ROOM ONLY

NOTES

- 1) AT TRANSITION OF CARPETS PLEASE LEVEL PILE HEIGHTS WITH PAD, TRANSITION TO BE SMOOTH AND FEATHERED.
- 2) INSTALL VINYL REDUCING STRIP BY HEADER OR EQUAL AT THRESHOLD BETWEEN CARPET OVER PAD AND VINYL TILE. STRIP COLOR: BROWN.

CITY OF REDONDO BEACH, DEPARTMENT OF BUILDING & SAFETY
 BY *Dg* U. 4 1987
APPROVED
 FOR CONSTRUCTION

This set of plans and specifications were prepared by the architect at all times and it is intended that the contractor shall be responsible for the same without written permission from the architect. The contractor shall be responsible for the same without written permission from the architect. The contractor shall be responsible for the same without written permission from the architect.

SHEAR WALL

FLOOR FINISH PLAN

SCALE: 1/8" = 1'-0"
 Date: *?*
 Revisions:

IA-4	Drawn by: R.R. Checked: R.R. Date: 5-29-87 Scale: 1/8" = 1'-0" Job No.: 1020	WALL FINISH PLAN & FLOOR FINISH PLAN Building #1, Upper Floor	HERONDO PLAZA Redondo Beach, California For MONTORO DEVELOPMENT CORP.	 Calif. Lic. No. 03174	RICHARD MAGEE & ASSOCIATES ARCHITECTS
------	--	---	--	---------------------------	---