

SENTINEL FUND.

Office Space For Lease The Plaza South Tower

189 S. Orange Ave., Suite 1650 Orlando, FL 32801



FOR LEASE

SIZE
4,588 SF

GROSS RENT
\$28 PSF

Marilyn Waldrop
Leasing@Sentinelfundcre.com
407-271-8016

PROPERTY HIGHLIGHTS

- Central location with easy access to I-4, SR-408, and SunRail
- Walkable, urban environment with 65,000+ daily professionals and strong daytime population
- Private Conference Room and Office Space

Median Age

1-MILE: 37
3-MILES: 39
5-MILES: 36



Daily Traffic

22,000+ Vehicles
Orange Avenue
(Downtown Orlando)



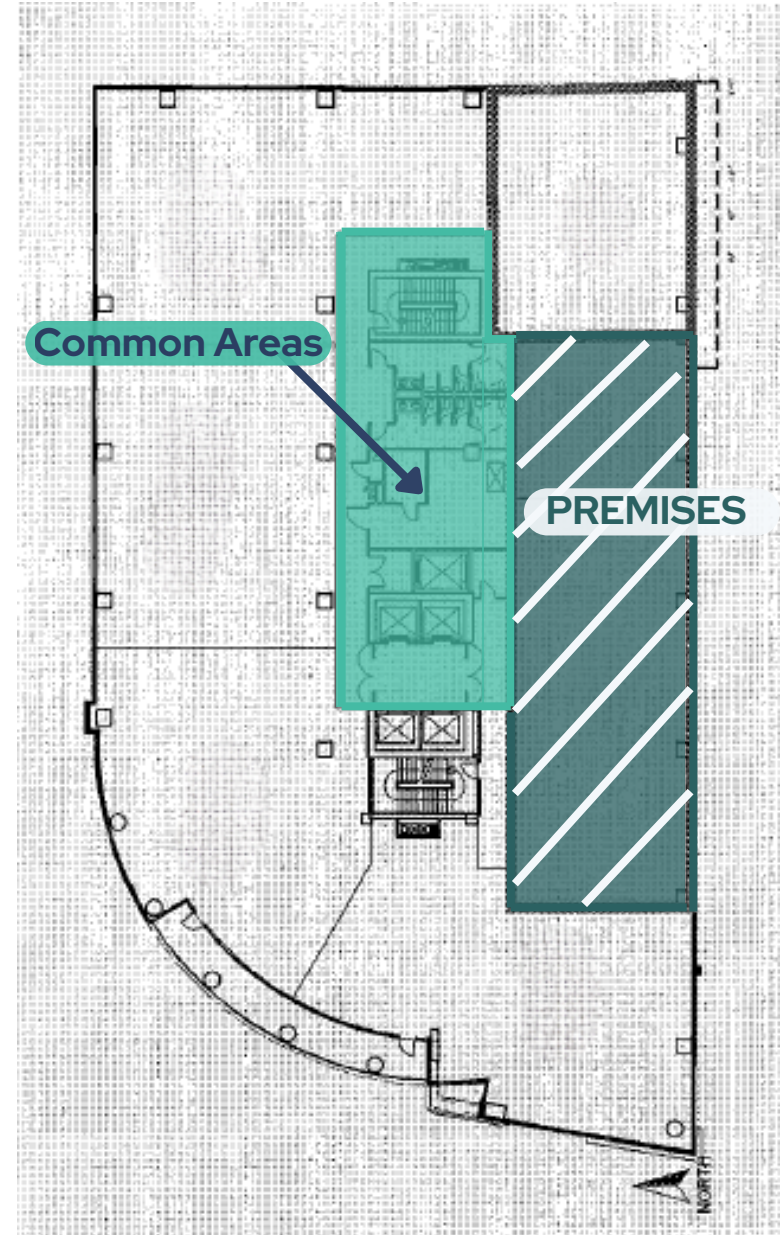
Population

1-MILE: 36,300
3-MILES: 147,100
5-MILES: 484,600



Median HH Income

1-MILE: \$86,700.00
3-MILES: \$81,900.00
5-MILES: \$66,400.00



Additional Photos



Private Offices (9)



Kitchen



Lobby Area



Private Conference Room