

SINGLE-STORY FLEX OFFICE FOR LEASE

UNIVERSITY BUSINESS CENTER I & II

10500 UNIVERSITY CENTER DRIVE
TAMPA, FLORIDA 33612



PROPERTY HIGHLIGHTS

- ❖ Abundantly Landscaped Park Setting w/ Private Entry
- ❖ Direct Access to I-275, I-75, and Major Tampa Arteries
- ❖ Due South of USF – Top-50 Public/Research University
- ❖ Direct Entry, Tenant-Controlled Spaces
- ❖ Ample On-Site Parking
- ❖ Directly adjacent to new Yuengling Tampa development
- ❖ Numerous Hotels and Restaurants nearby



KATY ALDERMAN | 813.287.1430

KALDERMAN@REDSTONECOMMERCIAL.COM

5401 WEST KENNEDY BOULEVARD | SUITE 720

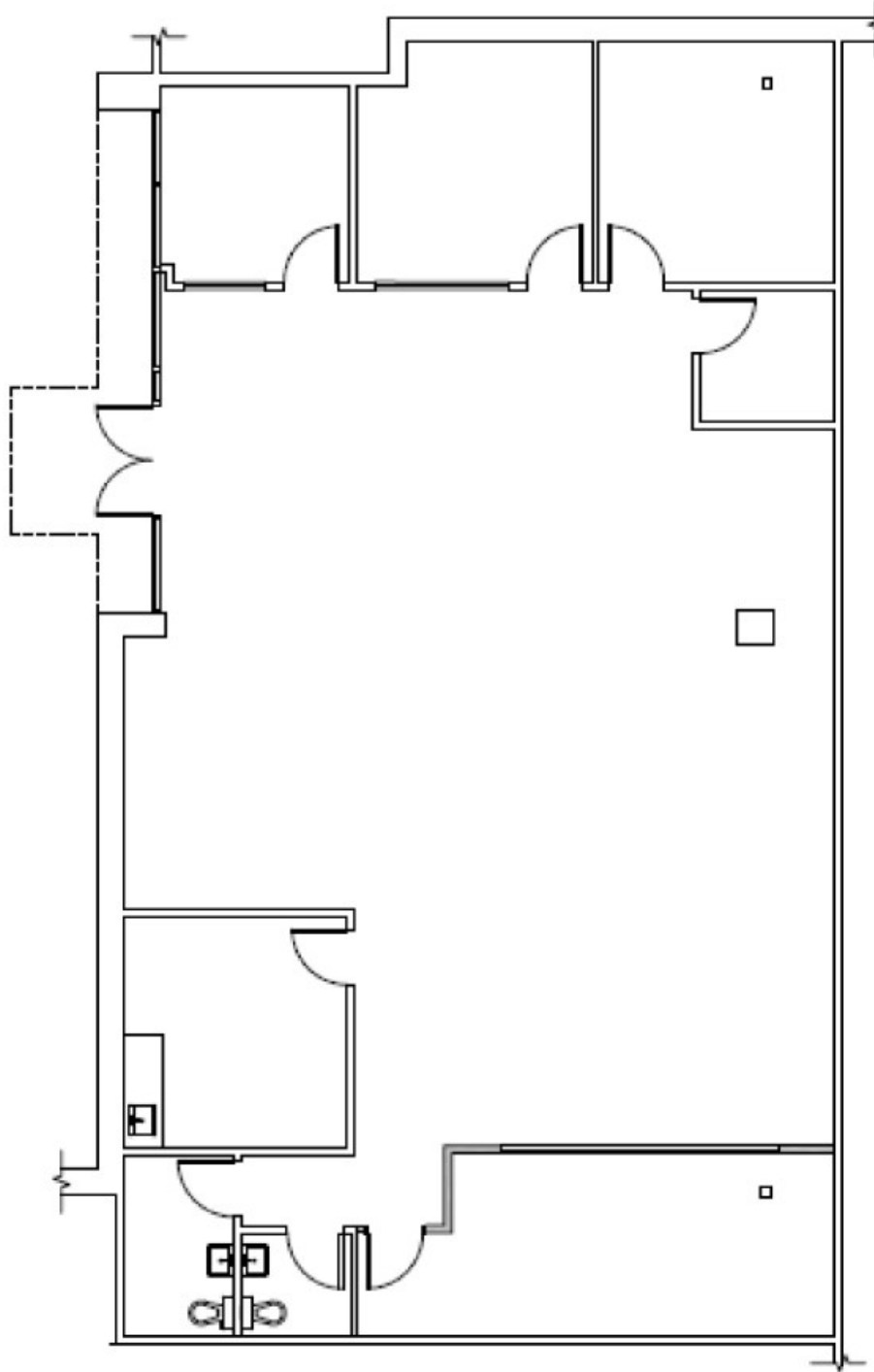
TAMPA | FLORIDA | 33609

REDSTONECOMMERCIAL.COM



SINGLE-STORY FLEX OFFICE FOR LEASE • UNIVERSITY BUSINESS CENTER I & II
10500 UNIVERSITY CENTER DRIVE, TAMPA, FLORIDA 33612

Building Suite	Available SF	Date Available
UBC I Suite 170	2,769 SF	Immediate



All information has been obtained from reliable sources. Redstone Commercial LLC and its representatives make no guarantees as to the accuracy of the information contained herein.

KATY ALDERMAN | 813.287.1430

KALDERMAN@REDSTONECOMMERCIAL.COM

5401 WEST KENNEDY BOULEVARD | SUITE 720

TAMPA | FLORIDA | 33609

REDSTONECOMMERCIAL.COM

