

FOR LEASE

PLAZA LAGUNA HILLS

23172 PLAZA POINTE DRIVE
LAGUNA HILLS, CALIFORNIA

±1,159 SF - ±3,864 SF OFFICE SUITES AVAILABLE



Exclusively listed by:

BRIAN GARBUTT
SVP/Principal
License ID# 01215482
949.724.4721
bgarbutt@lee-associates.com

ALEJANDRO SHERRATT
Associate
License ID# 02159392
949.724.4740
asherratt@lee-associates.com

ALLYSSA TALBOTT
Associate
License ID# 02181668
949.724.4761
atalbott@lee-associates.com



COMMERCIAL REAL ESTATE SERVICES
NEWPORT BEACH

DISCLAIMER: The information contained herein has been obtained from the property owner or other third party and is provided to you without verification as to accuracy. We (Lee & Associates, its brokers, employees, agents, principals, officers, directors and affiliates) make no warranty or representation regarding the information, property, or transaction. You and your attorneys, advisors and consultants should conduct your own investigation of the property and transaction.

PROPERTY FEATURES

- ±35,437 Square Foot High Image Office Building
- Located Conveniently off the 5 and 405 Freeways
- Close to Many Retail Amenities
- Ample Free Surface Parking
- Elevator Served
- Impressive Marble Lobby with Large Skylight
- Building Top Signage Available

AVAILABILITY

- » Suite 135: ±2,043 SF
4 offices, reception, open area, and a kitchenette.
- » Suite 140: ±2,689 SF
Reception desk, large conference room, open area, 4 window offices, two interior offices, and a large break room with a sink
- » Suite 230: ±3,864 SF
Large reception area, training/bullpen area/large conference room, 4 offices (2 corner offices), kitchenette, large open area and IT/storage room - **Furnished**
- » Suite 240: ±1,159 SF
2 Window offices and a conference room - **Move in Ready Spec Suite**

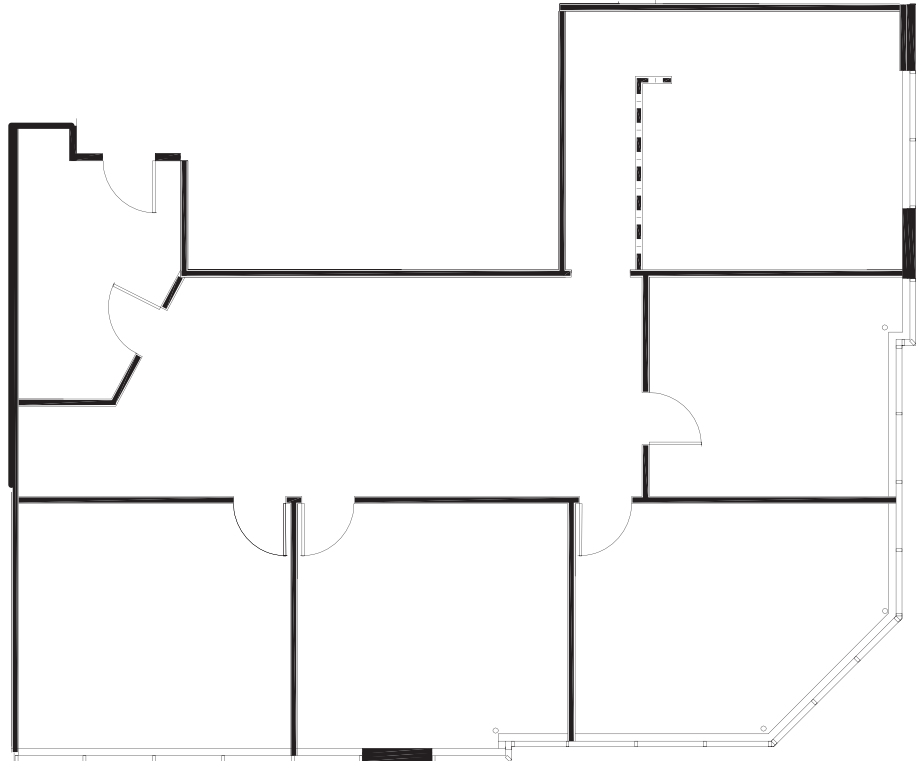
FOR LEASE

PLAZA LAGUNA HILLS

23172 PLAZA POINTE DRIVE
LAGUNA HILLS, CALIFORNIA

±1,159 SF - ±3,864 SF OFFICE SUITES AVAILABLE

SUITE 135 - ±2,043



Exclusively listed by:

BRIAN GARBUTT

SVP/Principal
License ID# 01215482
949.724.4721

bgarbutt@lee-associates.com

ALEJANDRO SHERRATT

Associate
License ID# 02159392
949.724.4740

asherratt@lee-associates.com

ALLYSSA TALBOTT

Associate
License ID# 02181668
949.724.4761

atalbott@lee-associates.com



**LEE &
ASSOCIATES**

COMMERCIAL REAL ESTATE SERVICES
NEWPORT BEACH

DISCLAIMER: The information contained herein has been obtained from the property owner or other third party and is provided to you without verification as to accuracy. We (Lee & Associates, its brokers, employees, agents, principals, officers, directors and affiliates) make no warranty or representation regarding the information, property, or transaction. You and your attorneys, advisors and consultants should conduct your own investigation of the property and transaction.



FOR LEASE

PLAZA LAGUNA HILLS

23172 PLAZA POINTE DRIVE
LAGUNA HILLS, CALIFORNIA

±1,159 SF - ±3,864 SF OFFICE SUITES AVAILABLE

SUITE 140 - ±2,689



Exclusively listed by:

BRIAN GARBUTT

SVP/Principal

License ID# 01215482

949.724.4721

bgarbutt@lee-associates.com

ALEJANDRO SHERRATT

Associate

License ID# 02159392

949.724.4740

asherratt@lee-associates.com

ALLYSSA TALBOTT

Associate

License ID# 02181668

949.724.4761

atalbott@lee-associates.com

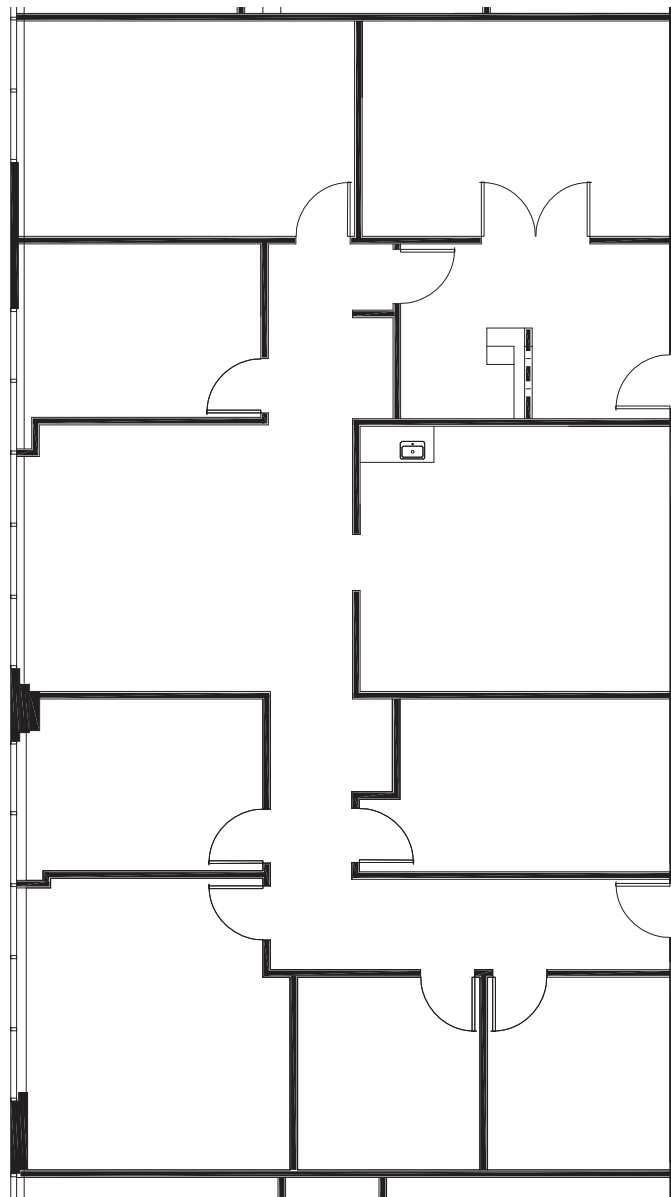


**LEE &
ASSOCIATES**

COMMERCIAL REAL ESTATE SERVICES

NEWPORT BEACH

DISCLAIMER: The information contained herein has been obtained from the property owner or other third party and is provided to you without verification as to accuracy. We (Lee & Associates, its brokers, employees, agents, principals, officers, directors and affiliates) make no warranty or representation regarding the information, property, or transaction. You and your attorneys, advisors and consultants should conduct your own investigation of the property and transaction.



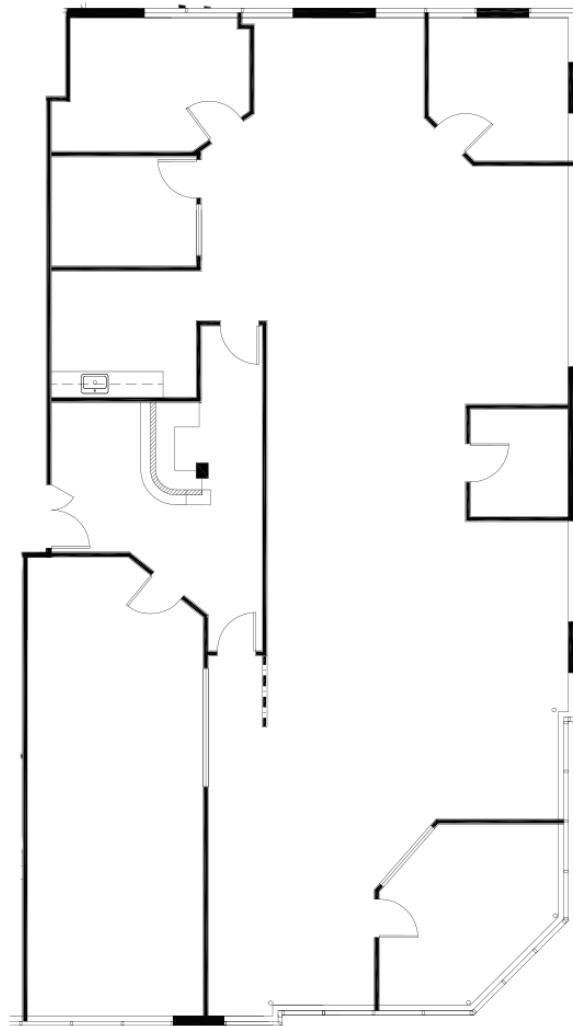
FOR LEASE

PLAZA LAGUNA HILLS

23172 PLAZA POINTE DRIVE
LAGUNA HILLS, CALIFORNIA

±1,159 SF - ±3,864 SF OFFICE SUITES AVAILABLE

SUITE 230 - ±3,864 SF



Exclusively listed by:

BRIAN GARBUTT

SVP/Principal

License ID# 01215482

949.724.4721

bgarbutt@lee-associates.com

ALEJANDRO SHERRATT

Associate

License ID# 02159392

949.724.4740

asherratt@lee-associates.com



**LEE &
ASSOCIATES**

COMMERCIAL REAL ESTATE SERVICES

NEWPORT BEACH

DISCLAIMER: The information contained herein has been obtained from the property owner or other third party and is provided to you without verification as to accuracy. We (Lee & Associates, its brokers, employees, agents, principals, officers, directors and affiliates) make no warranty or representation regarding the information, property, or transaction. You and your attorneys, advisors and consultants should conduct your own investigation of the property and transaction.



**GARBUTT
VALUE-ADD GROUP**
OFFICE • INDUSTRIAL • RETAIL
"Maximizing Property Values™"

FOR LEASE

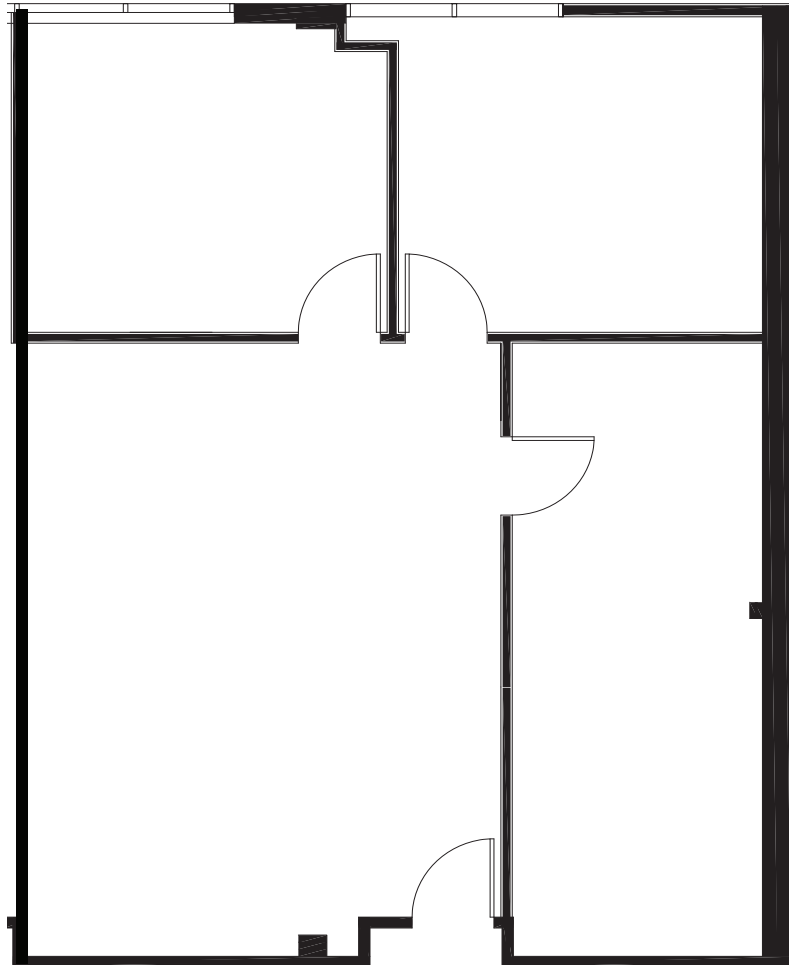
PLAZA LAGUNA HILLS

23172 PLAZA POINTE DRIVE
LAGUNA HILLS, CALIFORNIA

±1,159 SF - ±3,864 SF OFFICE SUITES AVAILABLE



SUITE 240 ±1,159



Exclusively listed by:

BRIAN GARBUTT

SVP/Principal
License ID# 01215482
949.724.4721

bgarbutt@lee-associates.com

ALEJANDRO SHERRATT

Associate
License ID# 02159392
949.724.4740

asherratt@lee-associates.com



COMMERCIAL REAL ESTATE SERVICES
NEWPORT BEACH

DISCLAIMER: The information contained herein has been obtained from the property owner or other third party and is provided to you without verification as to accuracy. We (Lee & Associates, its brokers, employees, agents, principals, officers, directors and affiliates) make no warranty or representation regarding the information, property, or transaction. You and your attorneys, advisors and consultants should conduct your own investigation of the property and transaction.