



## ONE OVERLOOK POINT

Lincolnshire Corporate Center

### SIZE:

Building: 206,626 Sq. Ft.  
Height: 6 Stories

Monthly rent includes:

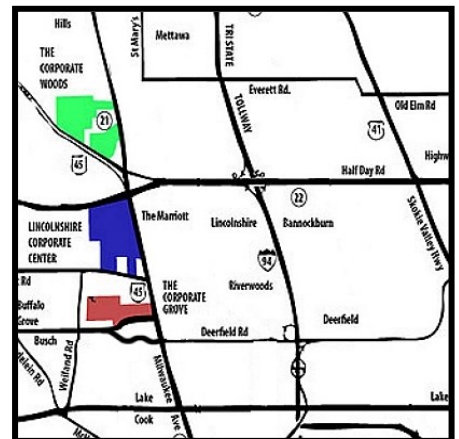
Electric and Internet  
4 hours per month of shared Conference Room

Suite 110 \$995 per mo gross Single Office  
Suite 143 \$395 per mo gross Single Office  
Suite 150 \$2,400 per mo gross 2 Private Offices with Open Area  
Suite 249 \$395 per mo gross Single Office  
Suite 522 \$1,350 per mo gross 1 Private Office with Open Area  
Suite 528 \$2,500 per mo gross 2 Private Offices with Open Area

Suite 660 \$1,150 per mo gross 1 Private Office with Open Area  
Suite 661 \$1,550 per mo gross 1 Private Office with Open Area  
Suite 664 \$2,400 per mo gross 2 Private Offices with Open Area  
Suite 665 \$2,600 per mo gross 1 Private Office with Open Area  
Suite 671 \$895 per mo gross Single Office  
Suite 679 \$1,950 per mo gross 1 Private Office with Open Area

### HIGHLIGHTS:

- Overlook Point Deli
- Wi-Fi Lounge / Game Room
- Lakeside Patio and Fire Pit
- Fitness Center
- Conference Center
- Shared Breakroom
- Outdoor Amphitheater and Miles of Walking / Jogging Paths
- Bike Room with Tools and Storage
- Walk to Public Transit Connections
- Dual Power Feed with Automatic Transfer Switch Insures a Consistent Power Supply
- Two Individual HVAC Units per Floor to Accommodate Cost Efficient After Hours Operations
- Responsive On-Site Ownership and Management



### Exclusive Leasing and Management Agents

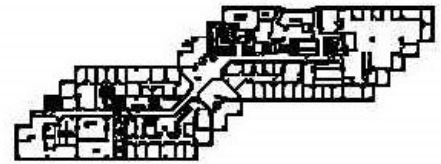
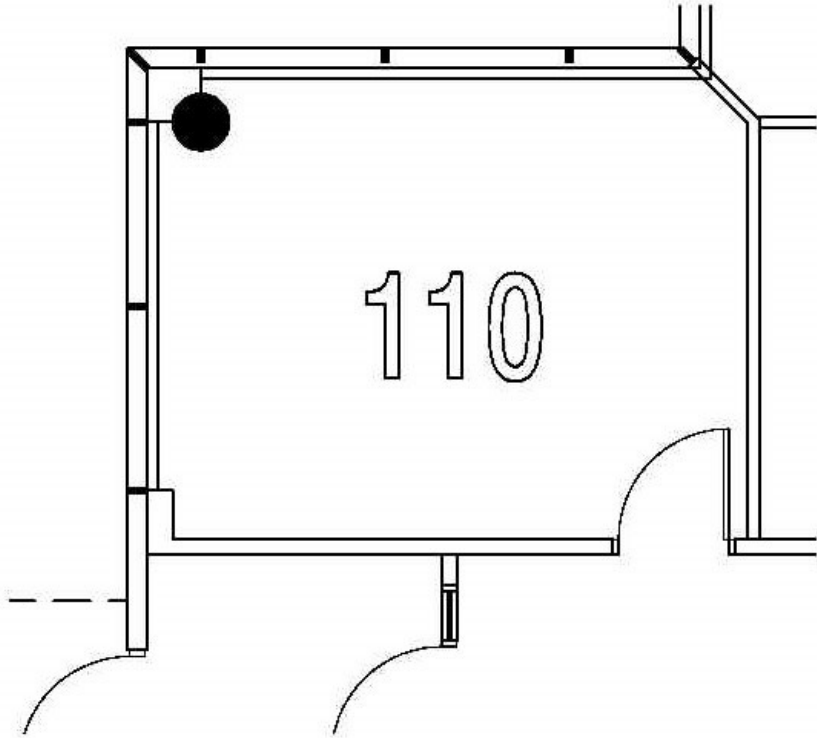
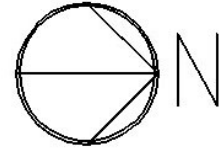
 **VAN VLISSINGEN AND CO.**  
One Overlook Point  
Lincolnshire Corporate Center  
Lincolnshire, Illinois 60069  
**847.634.2300**

**Chuck Lamphere, President**  
[cr1@vcco.com](mailto:cr1@vcco.com)

**Nick Panarese, Executive VP, SIOR**  
[ndp@vcco.com](mailto:ndp@vcco.com)

*Above information is subject to verification and no liability for errors or omissions is assumed. Price is subject to change and listing withdrawn without notice. Members of this firm have an ownership interest in this property. © Copyright 2024 All Rights Reserved*

**Suite 110**  
**252 Sq. Ft.**  
**ONE OVERLOOK POINT**  
Lincolnshire Corporate Center



KEY PLAN

**Exclusive Leasing and Management Agents**

 **VAN VLISSINGEN AND CO.**

One Overlook Point  
Lincolnshire Corporate Center  
Lincolnshire, Illinois 60069

**847.634.2300**

**Chuck Lamphere, President**  
[crl@vvco.com](mailto:crl@vvco.com)

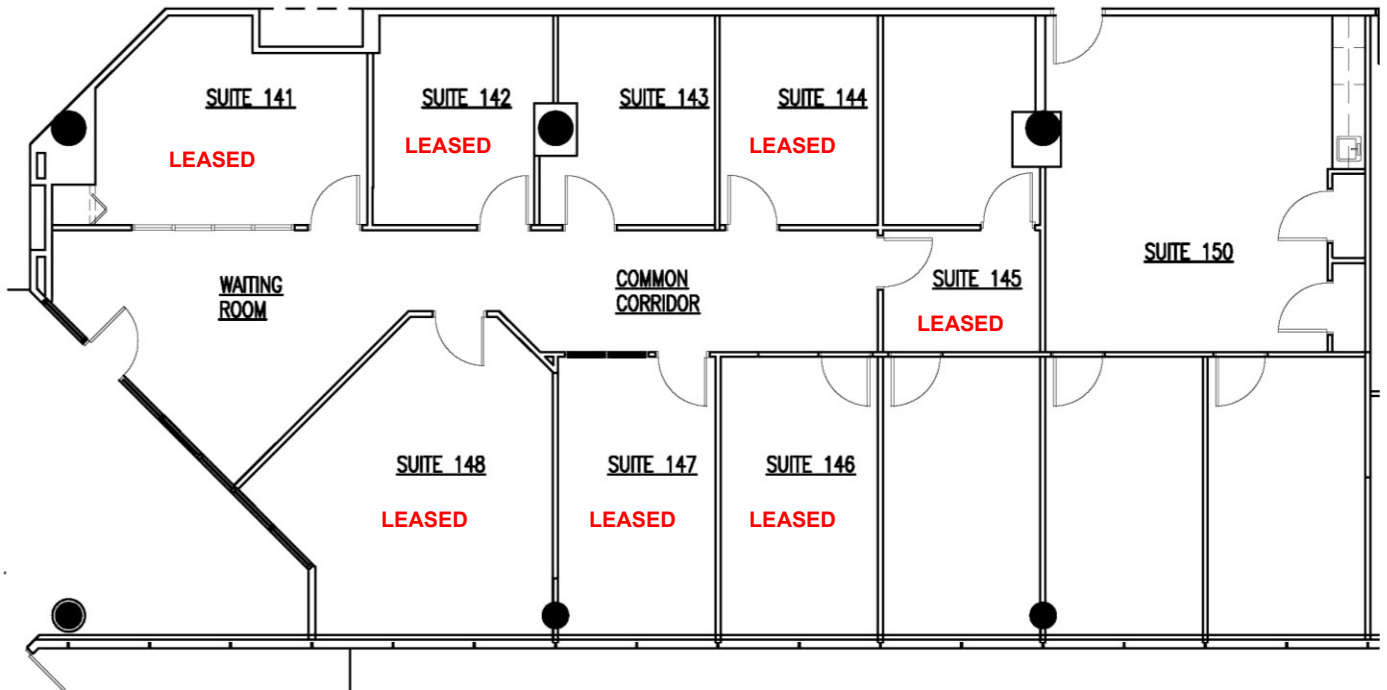
**Nick Panarese, Executive VP, SIOR**  
[ndp@vvco.com](mailto:ndp@vvco.com)

*Above information is subject to verification and no liability for errors or omissions is assumed. Price is subject to change and listing withdrawn without notice. Members of this firm have an ownership interest in this property. © Copyright 2024 All Rights Reserved*

**SUITES 141-150**

**ONE OVERLOOK POINT**

Lincolnshire Corporate Center



**Exclusive Leasing and Management Agents**



One Overlook Point  
Lincolnshire Corporate Center  
Lincolnshire, Illinois 60069  
**847.634.2300**

**Chuck Lamphere, President**  
[crl@vcco.com](mailto:crl@vcco.com)

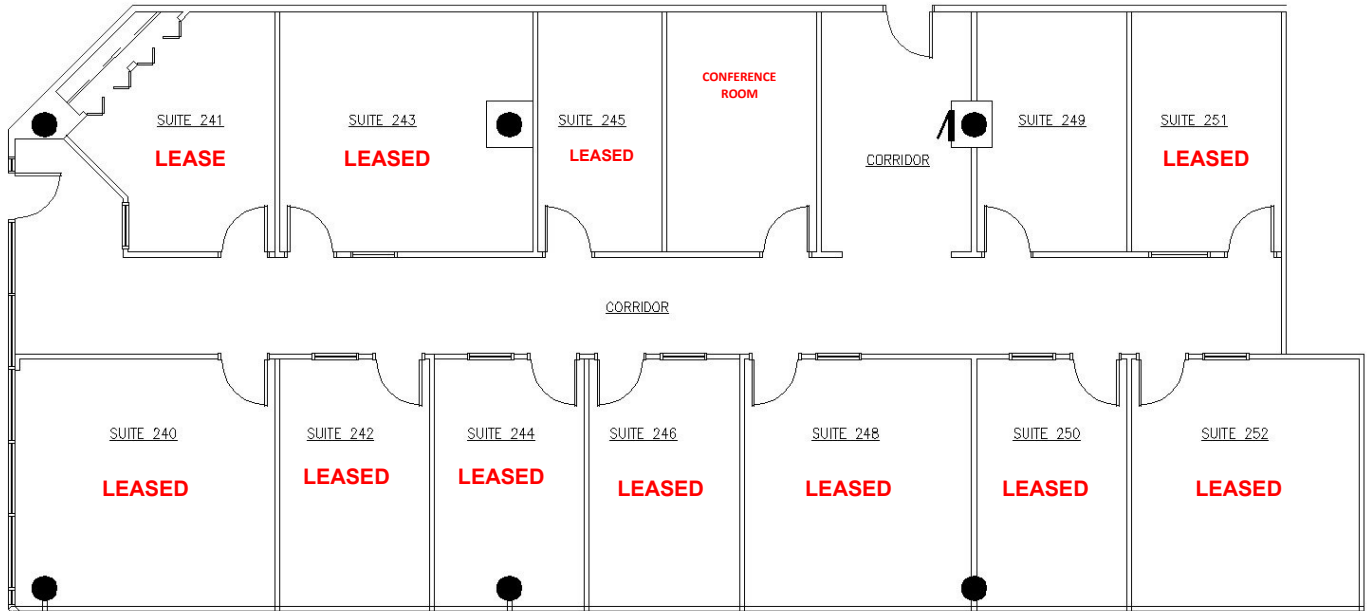
**Nick Panarese, Executive VP, SIOR**  
[ndp@vcco.com](mailto:ndp@vcco.com)

*Above information is subject to verification and no liability for errors or omissions is assumed. Price is subject to change and listing withdrawn without notice. Members of this firm have an ownership interest in this property. © Copyright 2024 All Rights Reserved*

## SUITES 240-252

### ONE OVERLOOK POINT

Lincolnshire Corporate Center



#### Exclusive Leasing and Management Agents

### VAN VLISSINGEN AND CO.

One Overlook Point  
Lincolnshire Corporate Center  
Lincolnshire, Illinois 60069

**847.634.2300**

Chuck Lamphere, President  
[crl@vvco.com](mailto:crl@vvco.com)

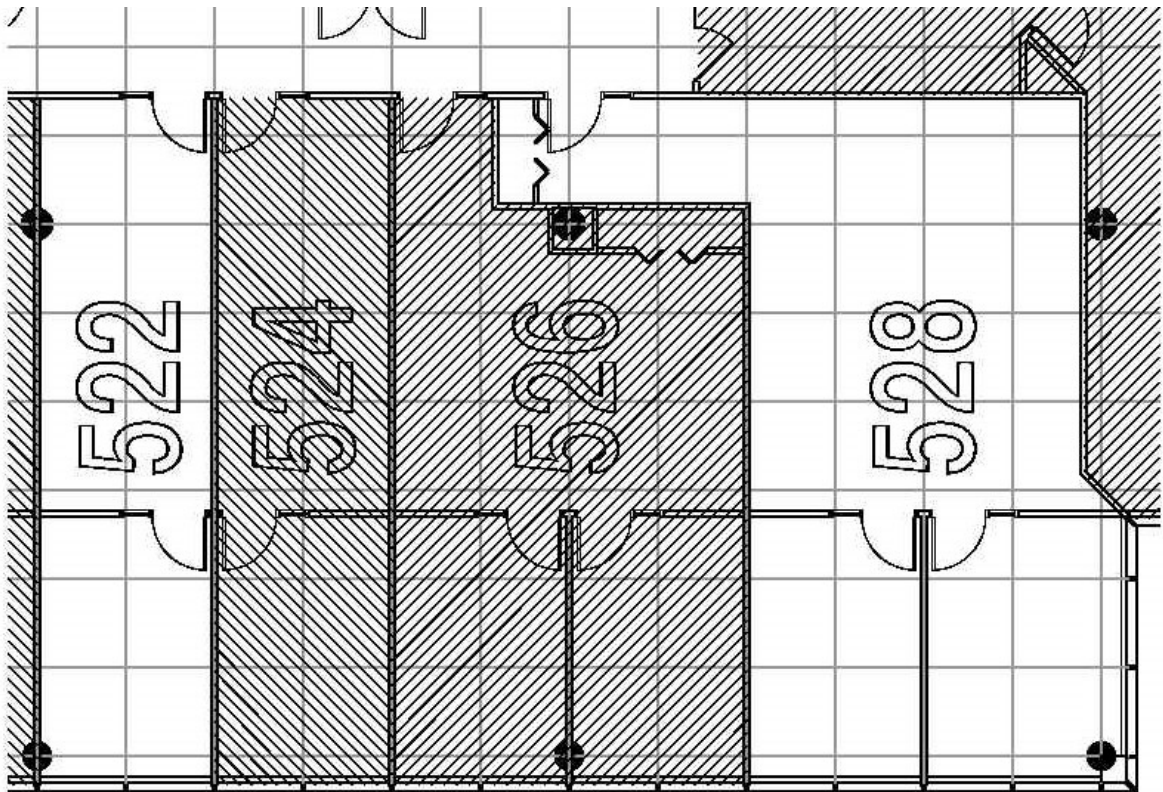
Nick Panarese, Executive VP, SIOR  
[ndp@vvco.com](mailto:ndp@vvco.com)

*Above information is subject to verification and no liability for errors or omissions is assumed. Price is subject to change and listing withdrawn without notice. Members of this firm have an ownership interest in this property. © Copyright 2024 All Rights Reserved*

**SUITES 522 & 528**

**ONE OVERLOOK POINT**

Lincolnshire Corporate Center



**Exclusive Leasing and Management Agents**



One Overlook Point  
Lincolnshire Corporate Center  
Lincolnshire, Illinois 60069

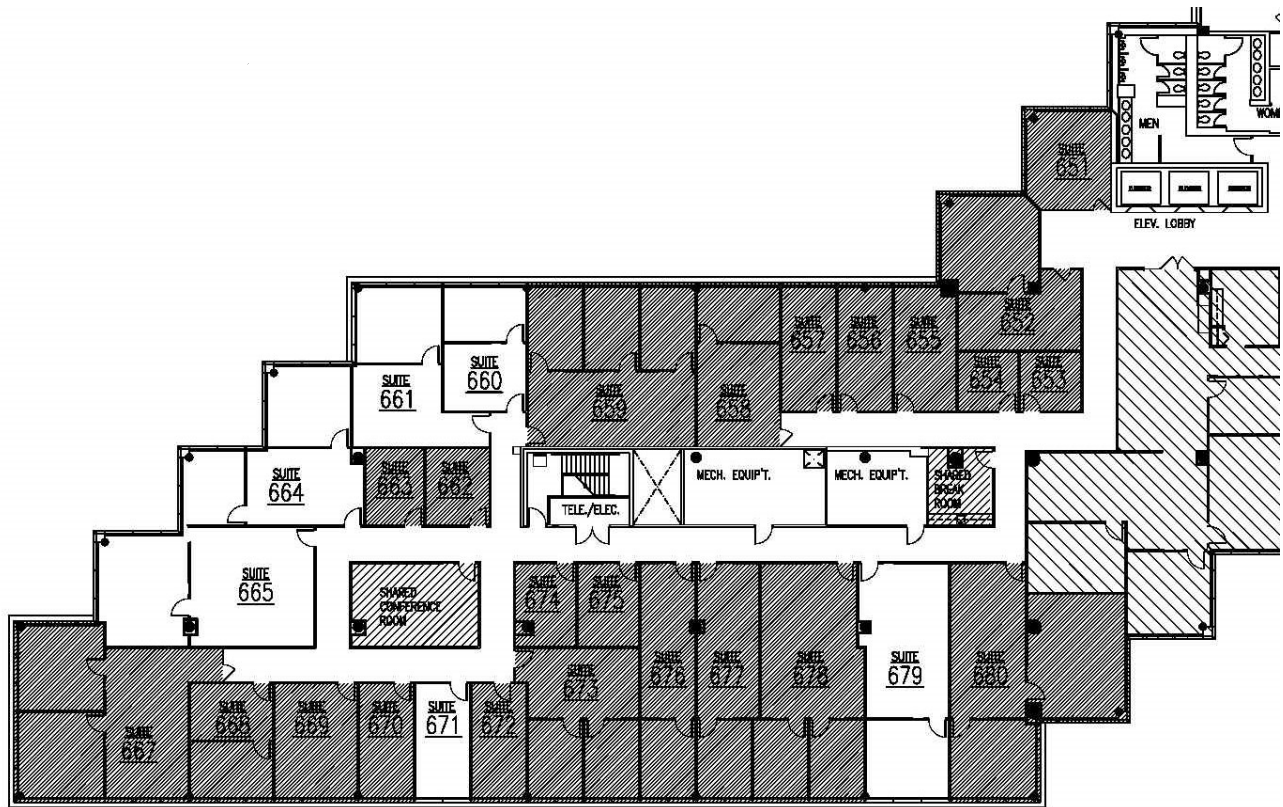
**847.634.2300**

**Chuck Lamphere, President**  
[crl@vvco.com](mailto:crl@vvco.com)

**Nick Panarese, Executive VP, SIOR**  
[ndp@vvco.com](mailto:ndp@vvco.com)

*Above information is subject to verification and no liability for errors or omissions is assumed. Price is subject to change and listing withdrawn without notice. Members of this firm have an ownership interest in this property. © Copyright 2024 All Rights Reserved*

**SUITES 651-680**  
**ONE OVERLOOK POINT**  
**NEW SMALL SUITES**  
Lincolnshire Corporate Center



**Exclusive Leasing and Management Agents**



One Overlook Point  
Lincolnshire Corporate Center  
Lincolnshire, Illinois 60069  
**847.634.2300**

**Chuck Lamphere, President**  
[crl@vvco.com](mailto:crl@vvco.com)

**Nick Panarese, Executive VP, SIOR**  
[ndp@vvco.com](mailto:ndp@vvco.com)

*Above information is subject to verification and no liability for errors or omissions is assumed. Price is subject to change and listing withdrawn without notice. Members of this firm have an ownership interest in this property. © Copyright 2024 All Rights Reserved*