

1145 Snelling Avenue

St. Paul, MN 55108



INDUSTRIAL FOR LEASE



For more information Please Contact

KEVIN ANDERSON

612-720-3266

Kevin@smallbayproperties.com

BUILDING SUMMARY

PROPERTY HIGHLIGHTS

3,500 SF New Construction w/ Mezzanine

Warehouse & Manufacturing Uses

Abundant Parking

Visibility from Snelling Ave & Adjacent to State Fair Grounds



VACANCY HIGHLIGHTS

SPACE HIGHLIGHTS

Square Footage 3,500 SF w/ 784 SF mezzanine

Base Rent Negotiable

Use Warehouse w/ office

Clear Height 24'

Loading 1 drive-in

Available Immediately



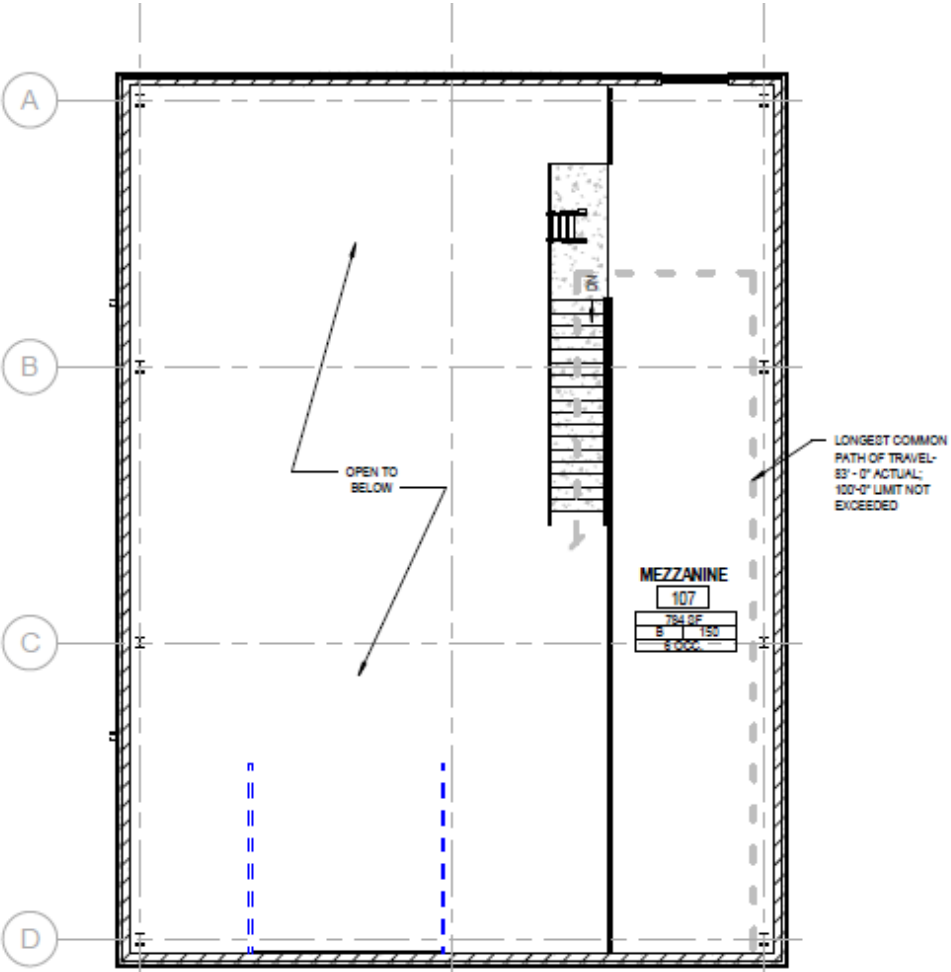
KEVIN ANDERSON

7612-720-3266

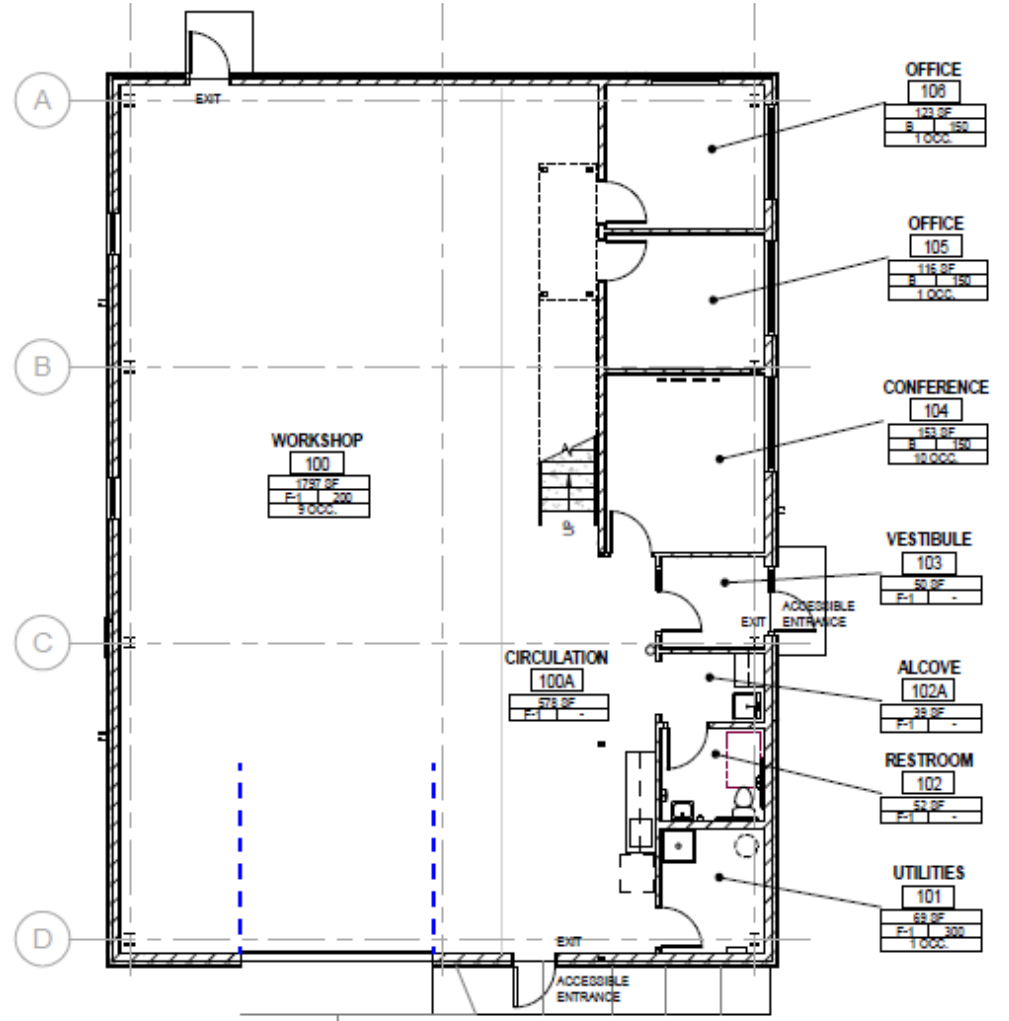
Kevin@smallbayproperties.com

For more information Please Contact

FLOOR PLAN



3 MEZZANINE LEVEL PLAN
1/8" = 1'-0"



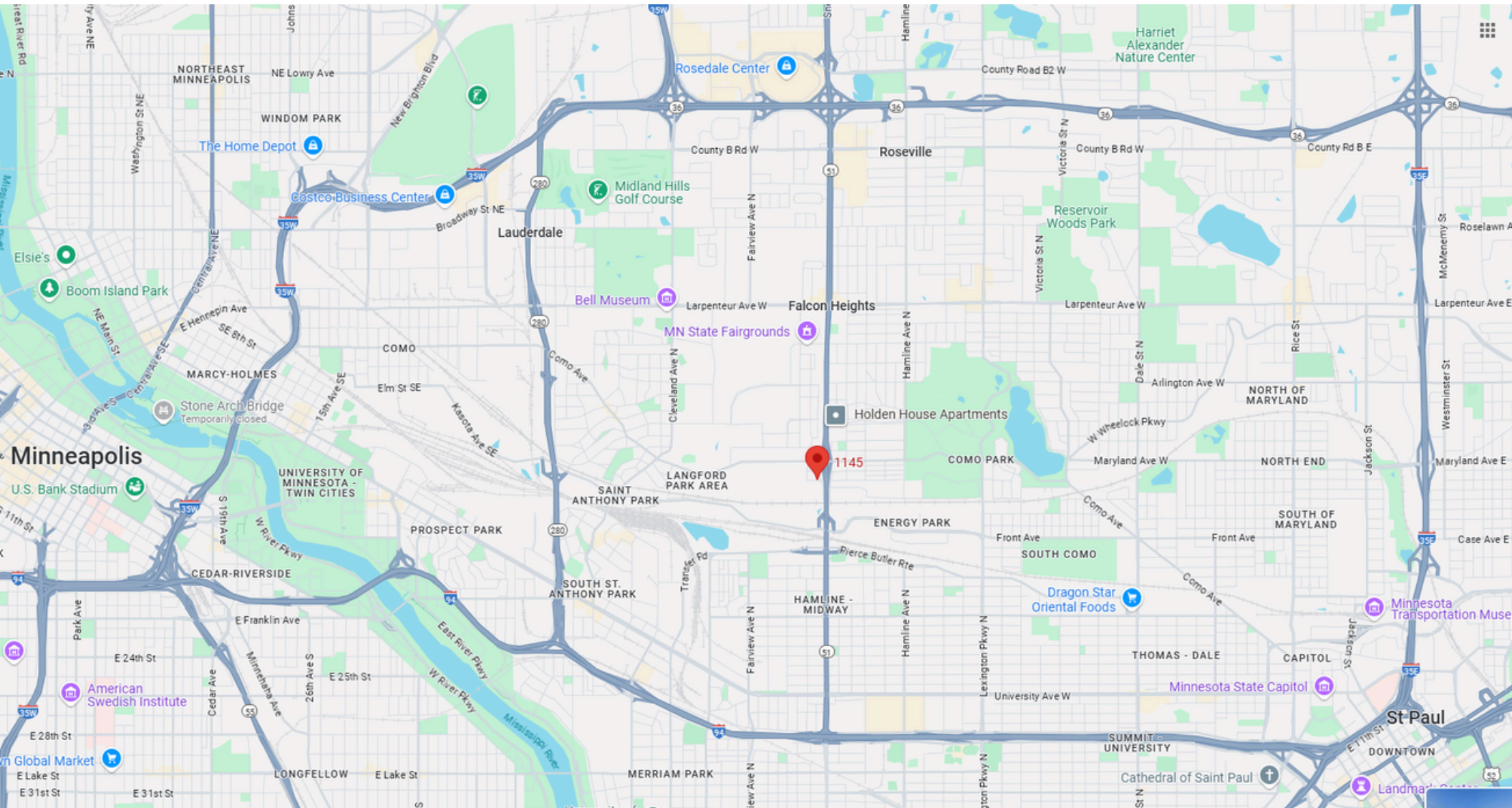
2 MAIN LEVEL CODE PLAN
1/8" = 1'-0"

1145 Snelling Avenue

St. Paul, MN 55108



MAP



KEVIN ANDERSON

For more information Please Contact

612-720-3266

Kevin@smallbayproperties.com