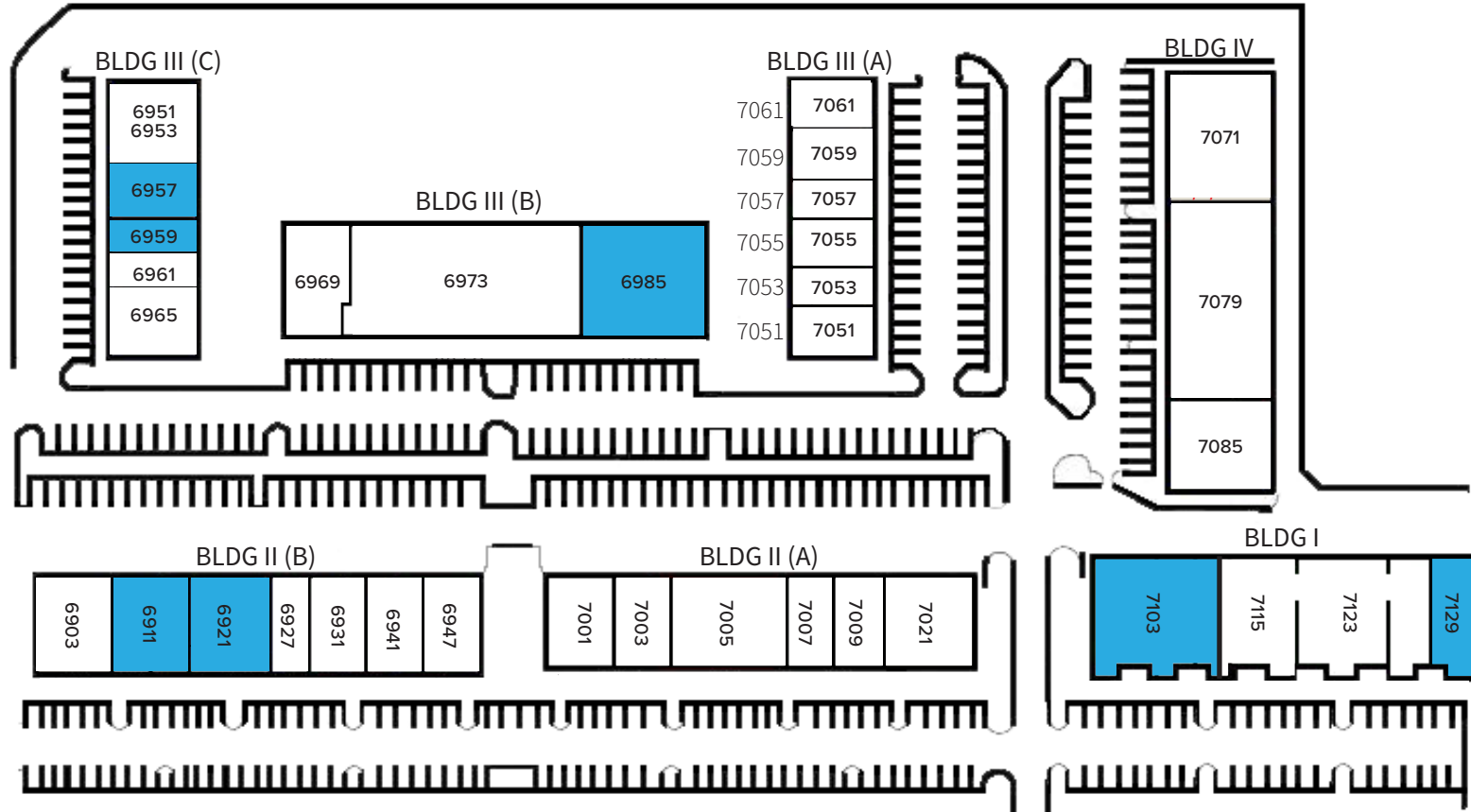


# UNIVERSITY CORPORATE CENTER

6903 - 7129 University Boulevard, Winter Park FL 32792

## SITE PLAN



### BLDG I

Suite 7103 – 7,187± SF  
Suite 7129 – 2,425± SF

### BLDG II (B)

Suite 6911 – 2,720± SF  
Suite 6921 – 4,154± SF

### BLDG III (B)

Suite 6985 – 6,397± SF

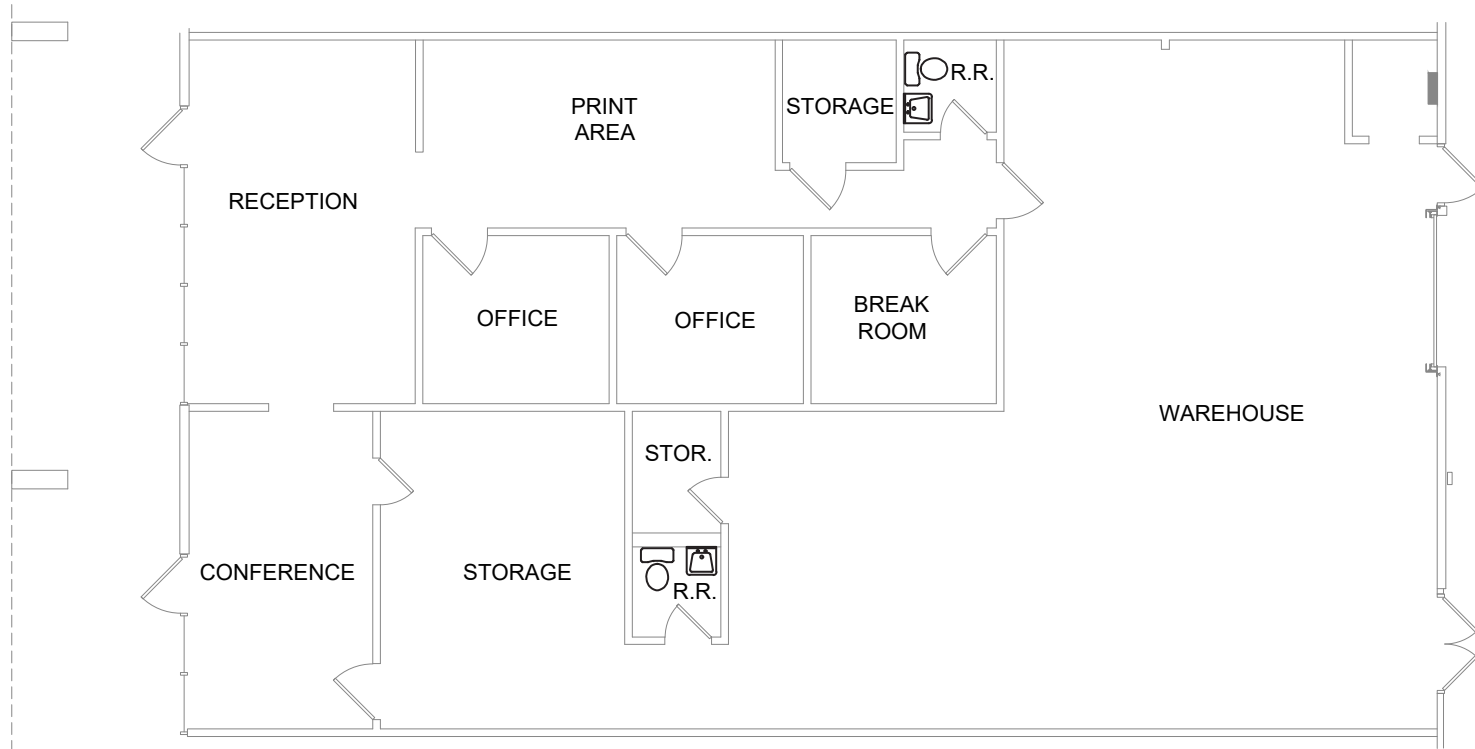
### BLDG III (C)

Suite 6957 – 2,194± SF  
Suite 6959 – 1,665± SF

# UNIVERSITY CORPORATE CENTER

6903 - 7129 University Boulevard, Winter Park FL 32792

SUITE 6911 | 2,720± SF



PLEASE CONTACT:

**Colin Morrison**

First Vice President

+1 407 404 5104

colin.morrison1@cbre.com



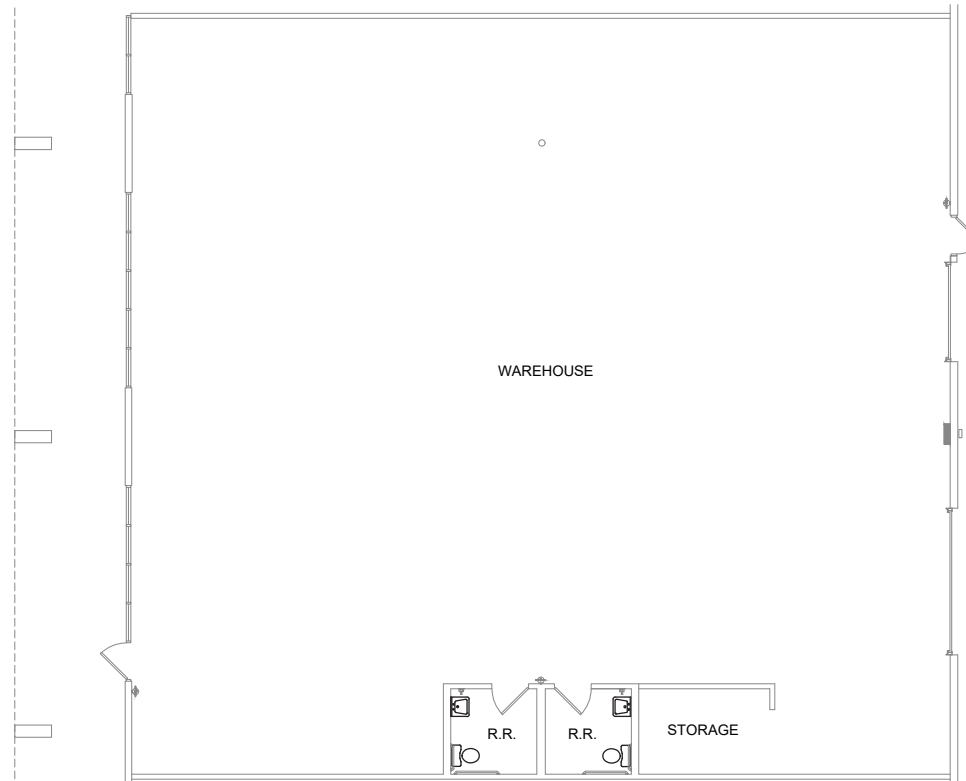
© 2026 CBRE, Inc. All rights reserved. This information has been obtained from sources believed reliable, but has not been verified for accuracy or completeness. You should conduct a careful, independent investigation of the property and verify all information. Any reliance on this information is solely at your own risk. CBRE and the CBRE logo are service marks of CBRE, Inc. All other marks displayed on this document are the property of their respective owners, and the use of such logos does not imply any affiliation with or endorsement of CBRE. Photos herein are the property of their respective owners. Use of these images without the express written consent of the owner is prohibited.

FOR LEASE

# UNIVERSITY CORPORATE CENTER

6903 - 7129 University Boulevard, Winter Park FL 32792

SUITE 6921 | 4,154± SF | 100% AIR CONDITIONED



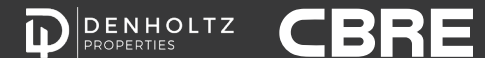
PLEASE CONTACT:

**Colin Morrison**

First Vice President

+1 407 404 5104

[colin.morrison1@cbre.com](mailto:colin.morrison1@cbre.com)



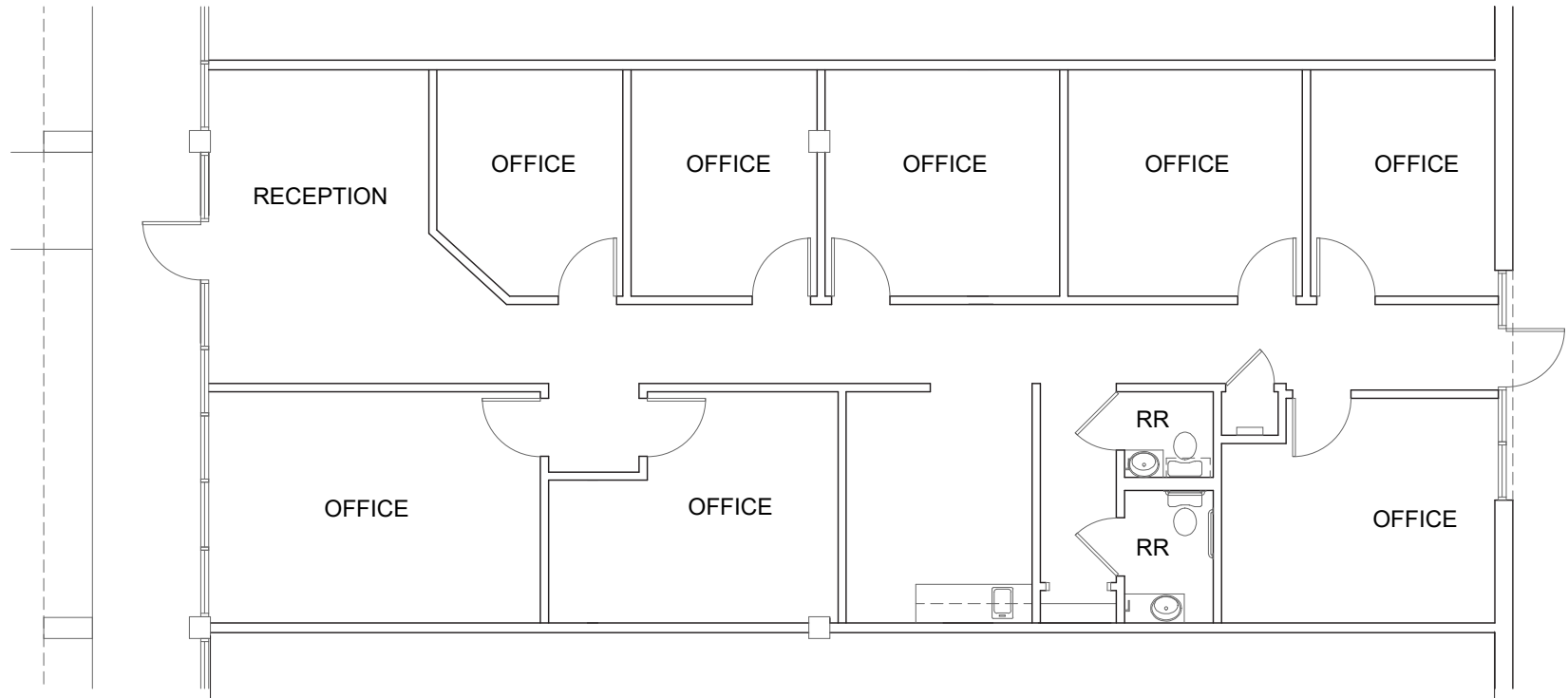
© 2024 CBRE, Inc. All rights reserved. This information has been obtained from sources believed reliable, but has not been verified for accuracy or completeness. You should conduct a careful, independent investigation of the property and verify all information. Any reliance on this information is solely at your own risk. CBRE and the CBRE logo are service marks of CBRE, Inc. All other marks displayed on this document are the property of their respective owners, and the use of such logos does not imply any affiliation with or endorsement of CBRE. Photos herein are the property of their respective owners. Use of these images without the express written consent of the owner is prohibited.

FOR LEASE

# UNIVERSITY CORPORATE CENTER

6903 - 7129 University Boulevard, Winter Park FL 32792

SUITE 6957 | 2,194± SF



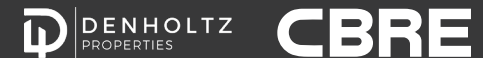
PLEASE CONTACT:

**Colin Morrison**

First Vice President

+1 407 404 5104

[colin.morrison1@cbre.com](mailto:colin.morrison1@cbre.com)

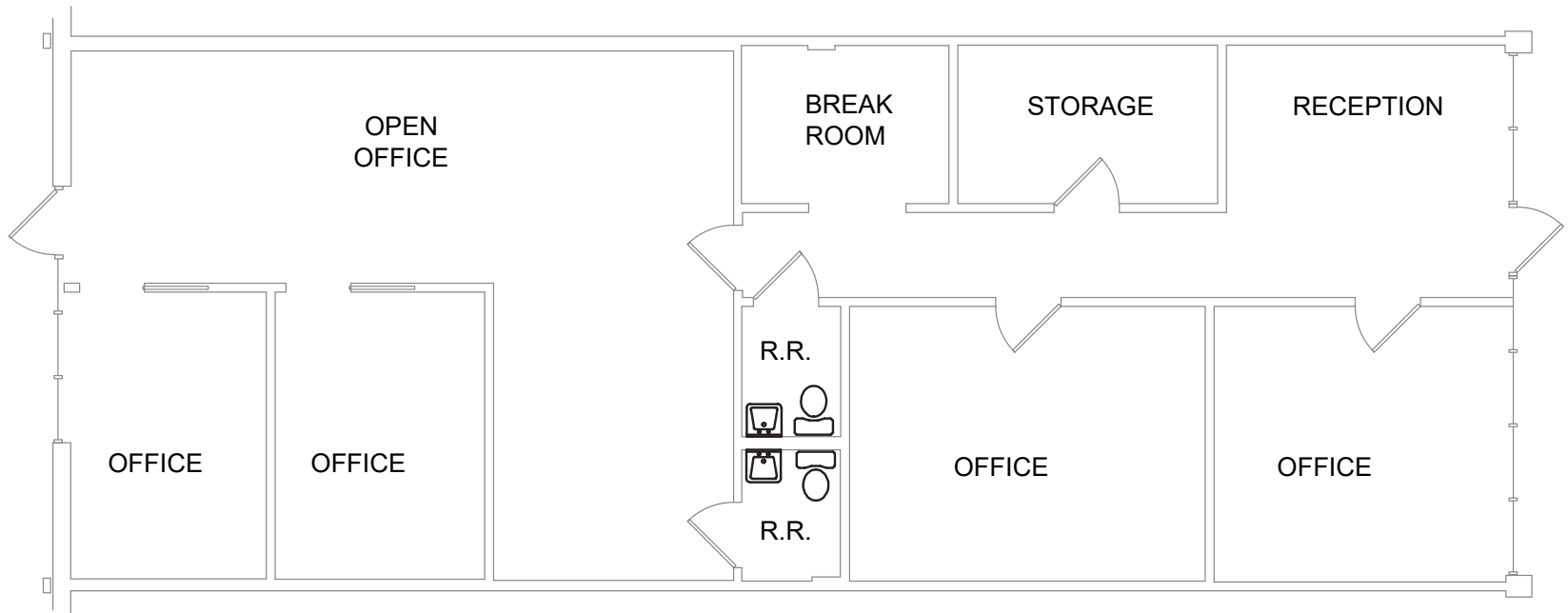


© 2026 CBRE, Inc. All rights reserved. This information has been obtained from sources believed reliable, but has not been verified for accuracy or completeness. You should conduct a careful, independent investigation of the property and verify all information. Any reliance on this information is solely at your own risk. CBRE and the CBRE logo are service marks of CBRE, Inc. All other marks displayed on this document are the property of their respective owners, and the use of such logos does not imply any affiliation with or endorsement of CBRE. Photos herein are the property of their respective owners. Use of these images without the express written consent of the owner is prohibited.

# UNIVERSITY CORPORATE CENTER

6903 - 7129 University Boulevard, Winter Park FL 32792

SUITE 6959 | 1,665± SF



PLEASE CONTACT:

**Colin Morrison**

First Vice President

+1 407 404 5104

colin.morrison1@cbre.com

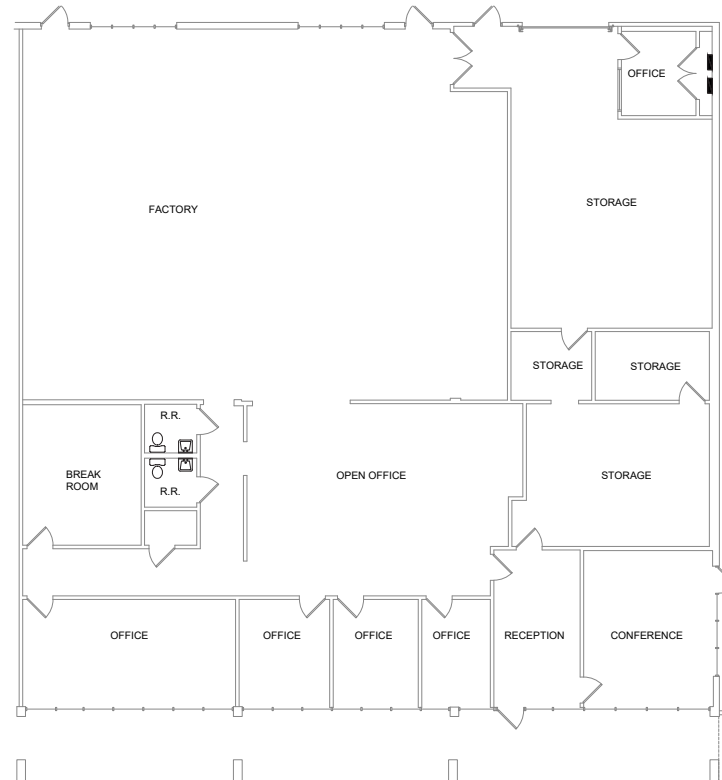


© 2024 CBRE, Inc. All rights reserved. This information has been obtained from sources believed reliable, but has not been verified for accuracy or completeness. You should conduct a careful, independent investigation of the property and verify all information. Any reliance on this information is solely at your own risk. CBRE and the CBRE logo are service marks of CBRE, Inc. All other marks displayed on this document are the property of their respective owners, and the use of such logos does not imply any affiliation with or endorsement of CBRE. Photos herein are the property of their respective owners. Use of these images without the express written consent of the owner is prohibited.

# UNIVERSITY CORPORATE CENTER

6903 - 7129 University Boulevard, Winter Park FL 32792

SUITE 6985 | 6,397± SF



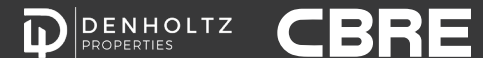
PLEASE CONTACT:

**Colin Morrison**

First Vice President

+1 407 404 5104

colin.morrison1@cbre.com



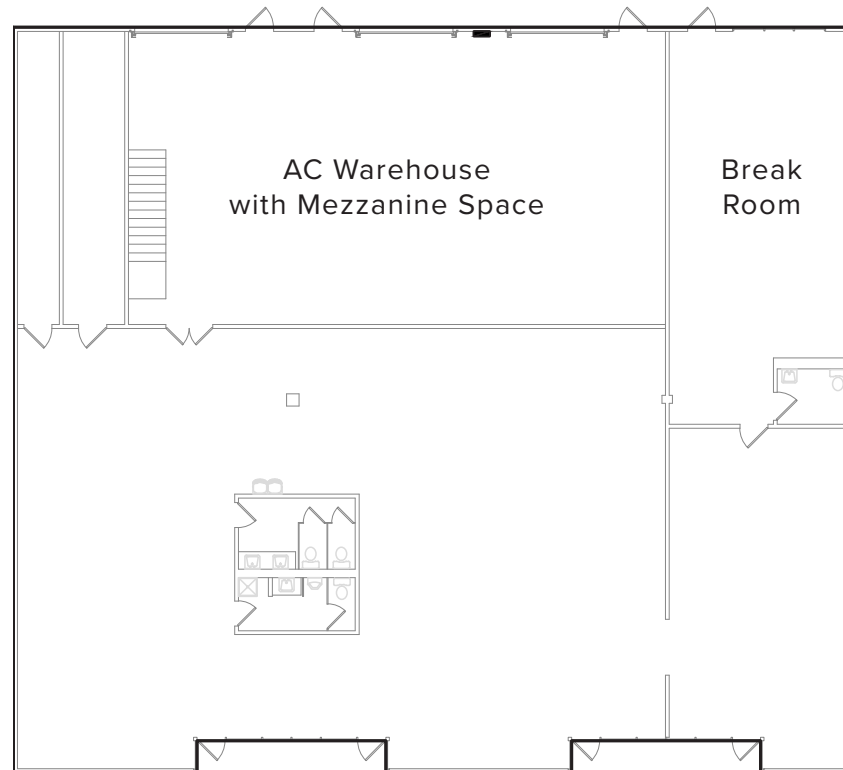
© 2025 CBRE, Inc. All rights reserved. This information has been obtained from sources believed reliable, but has not been verified for accuracy or completeness. You should conduct a careful, independent investigation of the property and verify all information. Any reliance on this information is solely at your own risk. CBRE and the CBRE logo are service marks of CBRE, Inc. All other marks displayed on this document are the property of their respective owners, and the use of such logos does not imply any affiliation with or endorsement of CBRE. Photos herein are the property of their respective owners. Use of these images without the express written consent of the owner is prohibited.

FOR LEASE

# UNIVERSITY CORPORATE CENTER

6903 - 7129 University Boulevard, Winter Park FL 32792

SUITE 7103 | 7,187± SF



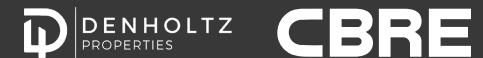
PLEASE CONTACT:

**Colin Morrison**

First Vice President

+1 407 404 5104

[colin.morrison1@cbre.com](mailto:colin.morrison1@cbre.com)



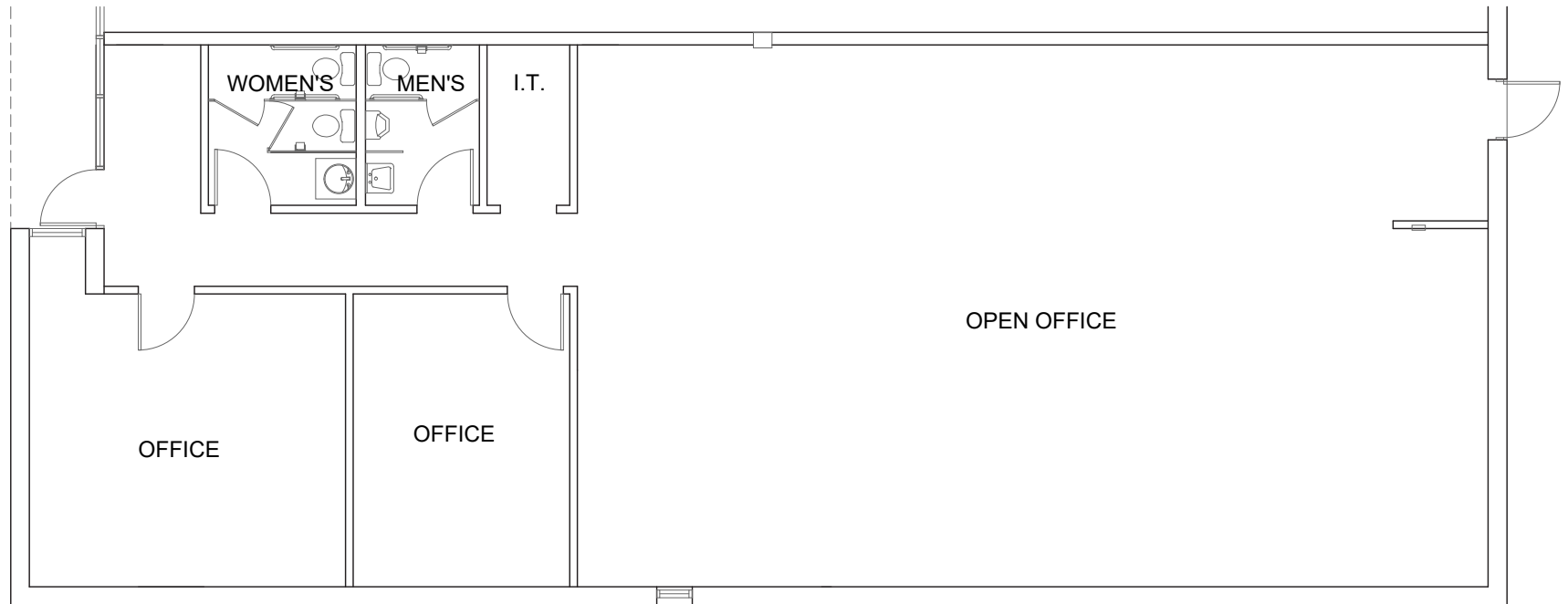
© 2026 CBRE, Inc. All rights reserved. This information has been obtained from sources believed reliable, but has not been verified for accuracy or completeness. You should conduct a careful, independent investigation of the property and verify all information. Any reliance on this information is solely at your own risk. CBRE and the CBRE logo are service marks of CBRE, Inc. All other marks displayed on this document are the property of their respective owners, and the use of such logos does not imply any affiliation with or endorsement of CBRE. Photos herein are the property of their respective owners. Use of these images without the express written consent of the owner is prohibited.

FOR LEASE

# UNIVERSITY CORPORATE CENTER

6903 - 7129 University Boulevard, Winter Park FL 32792

SUITE 7129 | 2,425± SF



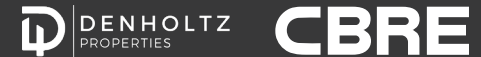
PLEASE CONTACT:

**Colin Morrison**

First Vice President

+1 407 404 5104

[colin.morrison1@cbre.com](mailto:colin.morrison1@cbre.com)



© 2025 CBRE, Inc. All rights reserved. This information has been obtained from sources believed reliable, but has not been verified for accuracy or completeness. You should conduct a careful, independent investigation of the property and verify all information. Any reliance on this information is solely at your own risk. CBRE and the CBRE logo are service marks of CBRE, Inc. All other marks displayed on this document are the property of their respective owners, and the use of such logos does not imply any affiliation with or endorsement of CBRE. Photos herein are the property of their respective owners. Use of these images without the express written consent of the owner is prohibited.