



Property Description

Brookwood Office Center offers 11,613 square feet of contiguous space. Located within a newly renovated and well established shopping center, Brookwood Office Center features high parking ratios and easy access from both S.W. 89th Street and South Western Avenue. Brookwood is surrounded by national chains, restaurants, retail shopping and convenient highway access. Maintained by reliable and local building management and supported by stable and committed ownership.

Property Highlights

- OFFICE SPACE FOR LEASE
- 1,000-11,613 SF AVAILABLE (MOL)
- High Parking Ratios
- Convenient Access to I-35 & I-240
- Pylon Signage

Offering Summary

Lease Rate:	\$14.00 SF/yr (NNN)
Available SF:	1,000 - 11,613 SF
Building Size:	116,361 SF

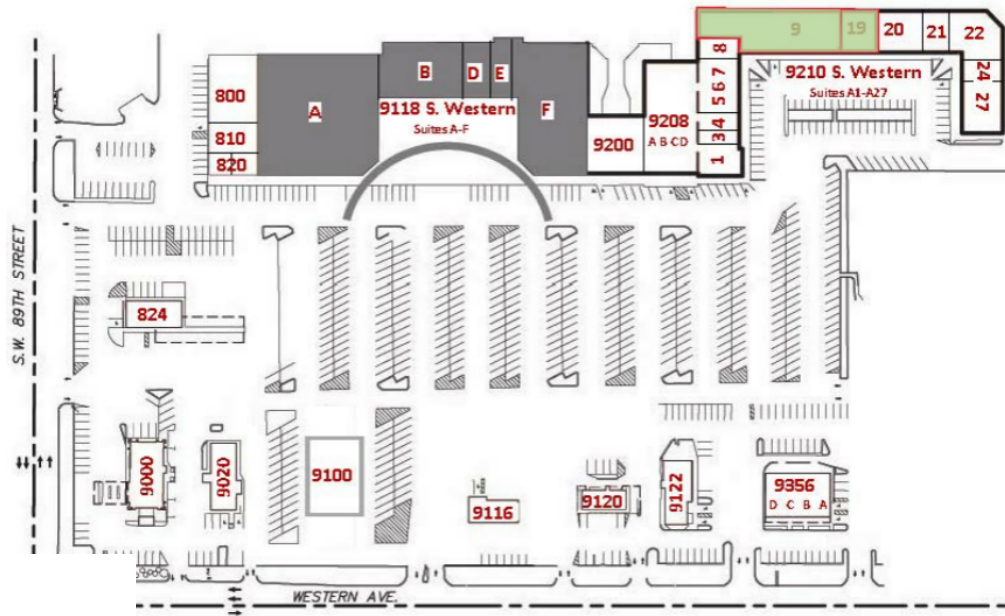
Demographics	1 Mile	3 Miles	5 Miles
Total Households	4,736	38,107	80,344
Total Population	10,706	97,287	216,058
Average HH Income	\$54,566	\$54,577	\$52,168

RICK PRITCHETT, CCIM

405.605.0825

rick@precorruffin.com





Legend

Available

BROOKWOOD OFFICE CENTER

Lease Information

Lease Type:	NNN	Lease Term:	Negotiable
Total Space:	1,000 - 11,613 SF	Lease Rate:	\$14.00 SF/yr

Available Spaces

Suite	Tenant	Size	Type	Rate	Description
A9	Available	11,613 SF	NNN	\$14.00 SF/yr	-
A19	Available	1,000 SF	NNN	\$14.00 SF/yr	-

RICK PRITCHETT, CCIM

405.605.0825

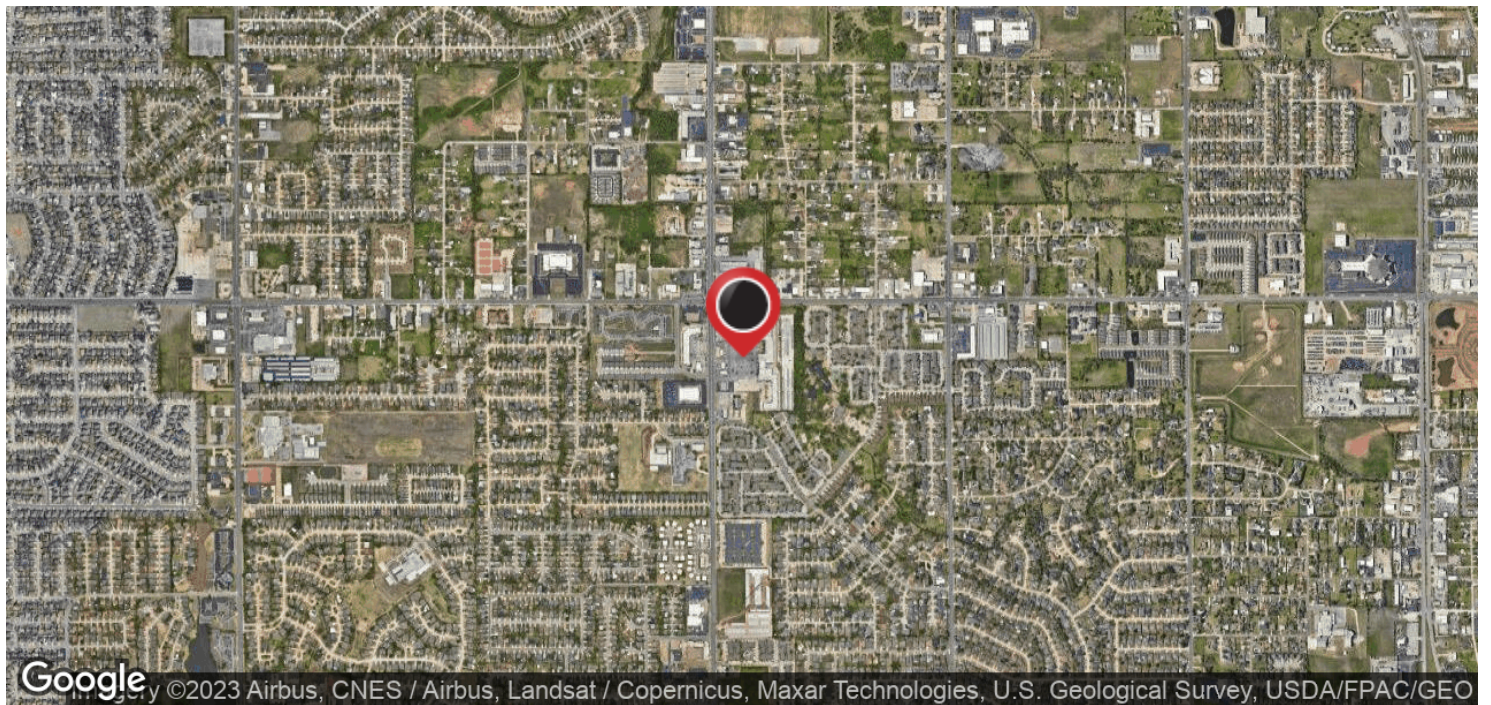
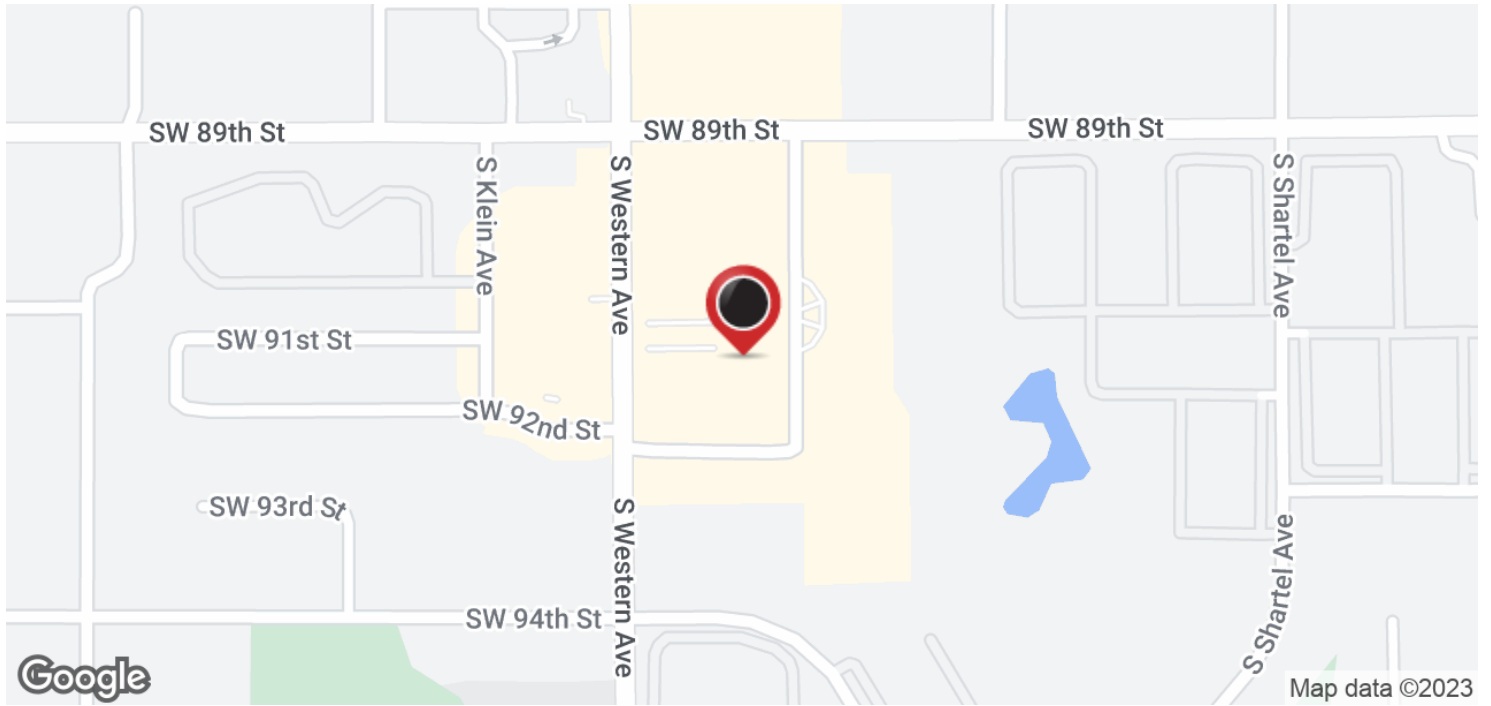
rick@precorruffin.com



For Lease

BROOKWOOD OFFICE CENTER

9210 S. WESTERN



RICK PRITCHETT, CCIM

405.605.0825

rick@precorruffin.com



PRECORRUFFIN

PRECOR RUFFIN | 825 N. BROADWAY, SUITE 300, OKLAHOMA CITY, OK 73102 | 405.605.0825 | PRECORRUFFIN.COM

The information above has been obtained from sources believed reliable. While we do not doubt its accuracy, PrecorRuffin, LLC has not verified it and makes no guarantee, warranty or representation about it. It is your responsibility to independently confirm its accuracy.