

# FOR SALE

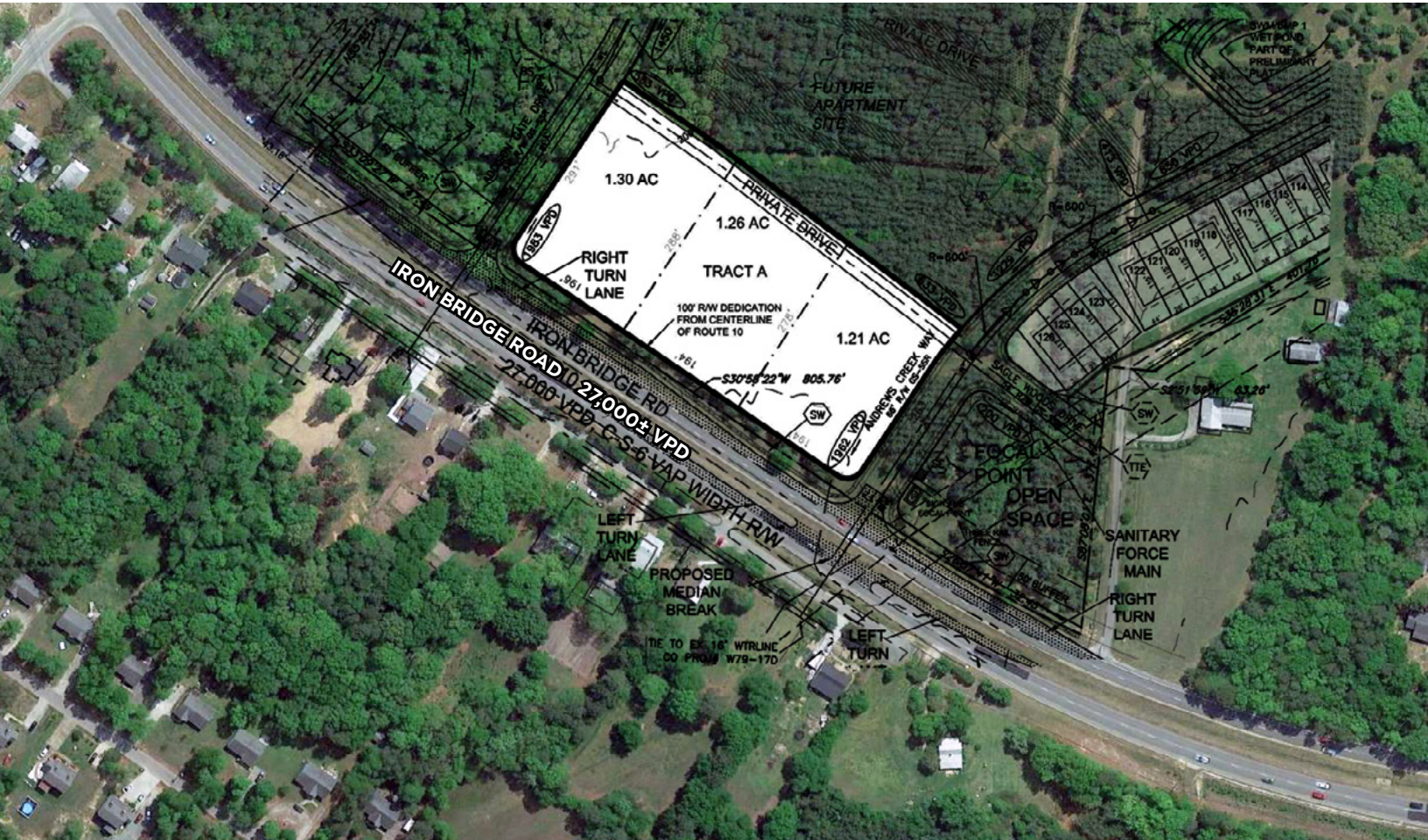
GREAT VISIBILITY

## Urban Land

6767 Iron Bridge Road | Richmond, VA 23234



COMMONWEALTH  
COMMERCIAL  
Comprehensive Property Solutions



### PROPERTY HIGHLIGHTS

- › 4.5± acre out parcel
- › Possible to subdivide into 3 individual parcels
- › Ideal for medical, office or daycare users
- › Great visibility and access
- › Fronting high traffic Iron Bridge Road (Route 10)
- › Development will also include 230 future apartments and 207 townhomes
- › Utilities and loop road to be delivered
- › Close proximity to Route 288

DEMOGRAPHICS	1 MILE	3 MILE	5 MILE
TOTAL POPULATION	7,286	54,402	127,321
AVERAGE HH INCOME	\$85,295	\$83,153	\$76,302

### FOR MORE INFORMATION:

#### TUCKER DOWDY

Senior Vice President | Partner

804-228-4932

[tdowdy@commonwealthcommercial.com](mailto:tdowdy@commonwealthcommercial.com)

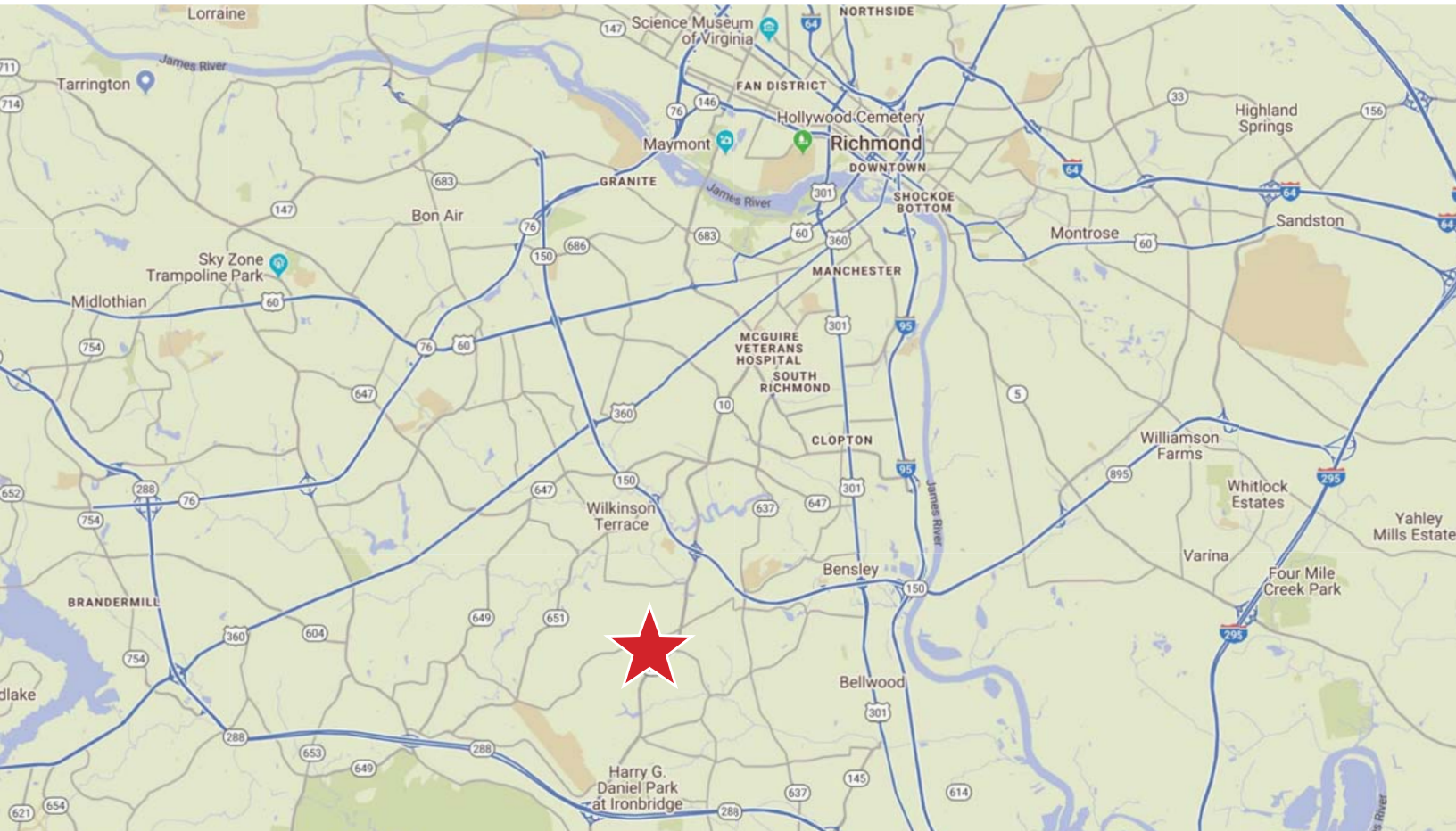
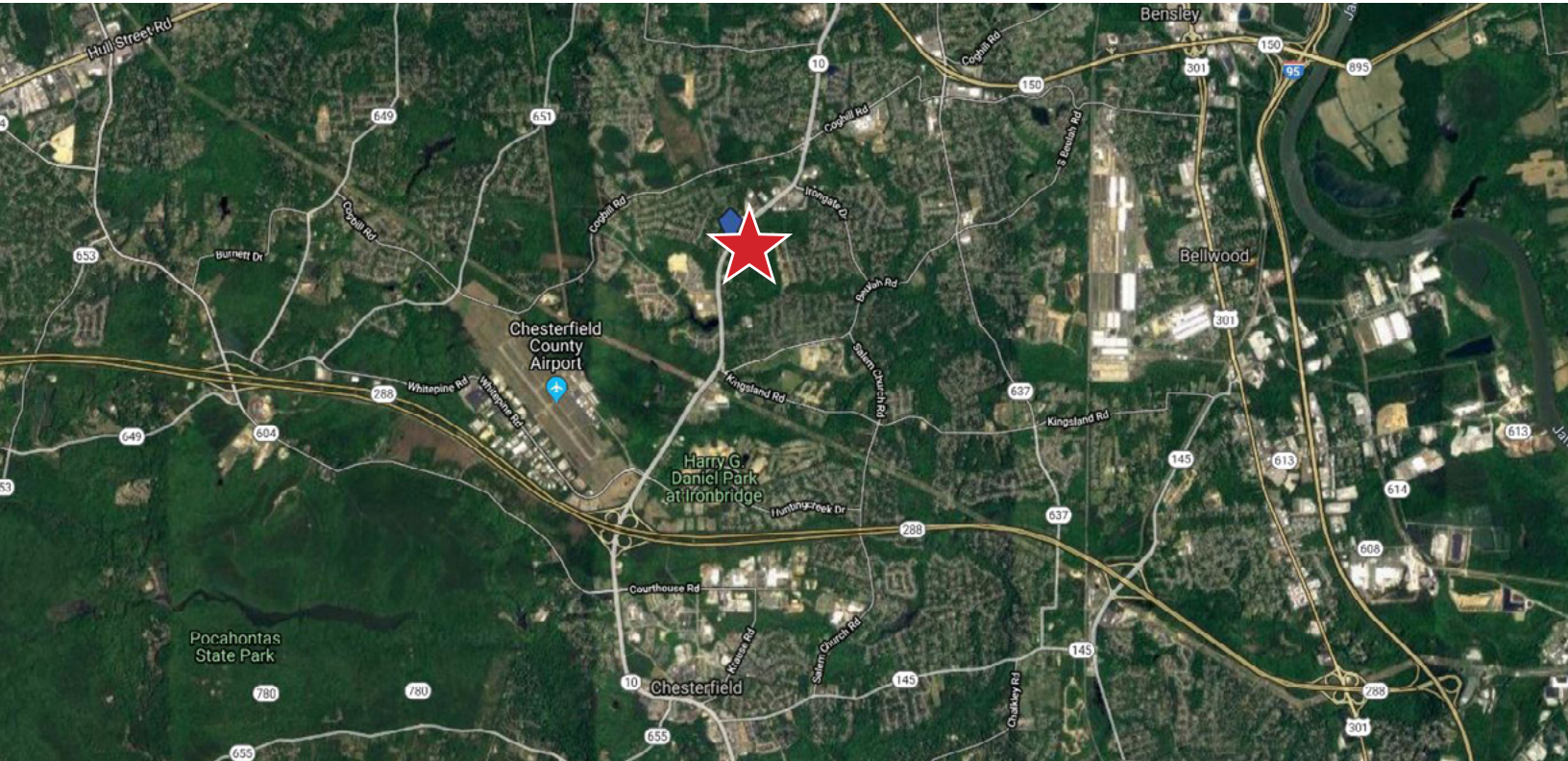
Commonwealth Commercial Partners, LLC represents the Owner of this property. Information contained herein is deemed reliable but is not guaranteed.







# SURROUNDING AREA



FOR SALE | 6767 IRON BRIDGE ROAD | RICHMOND, VA 23234