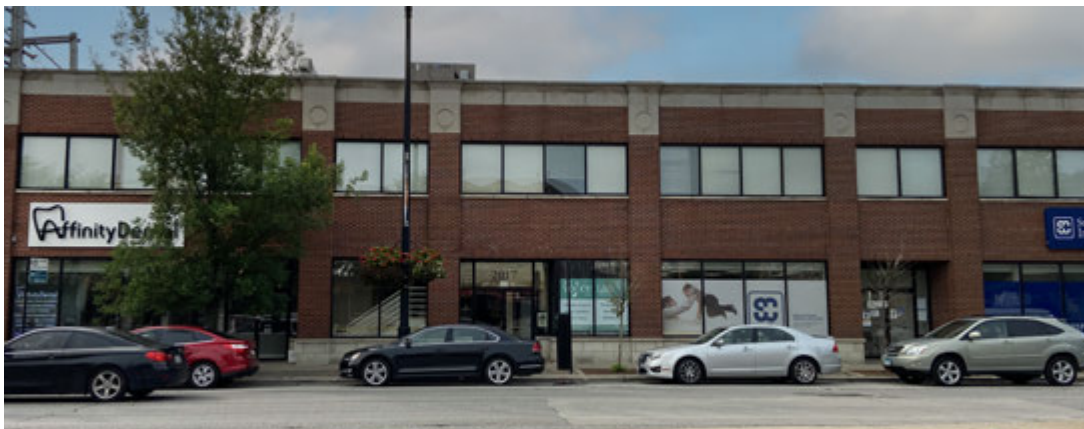
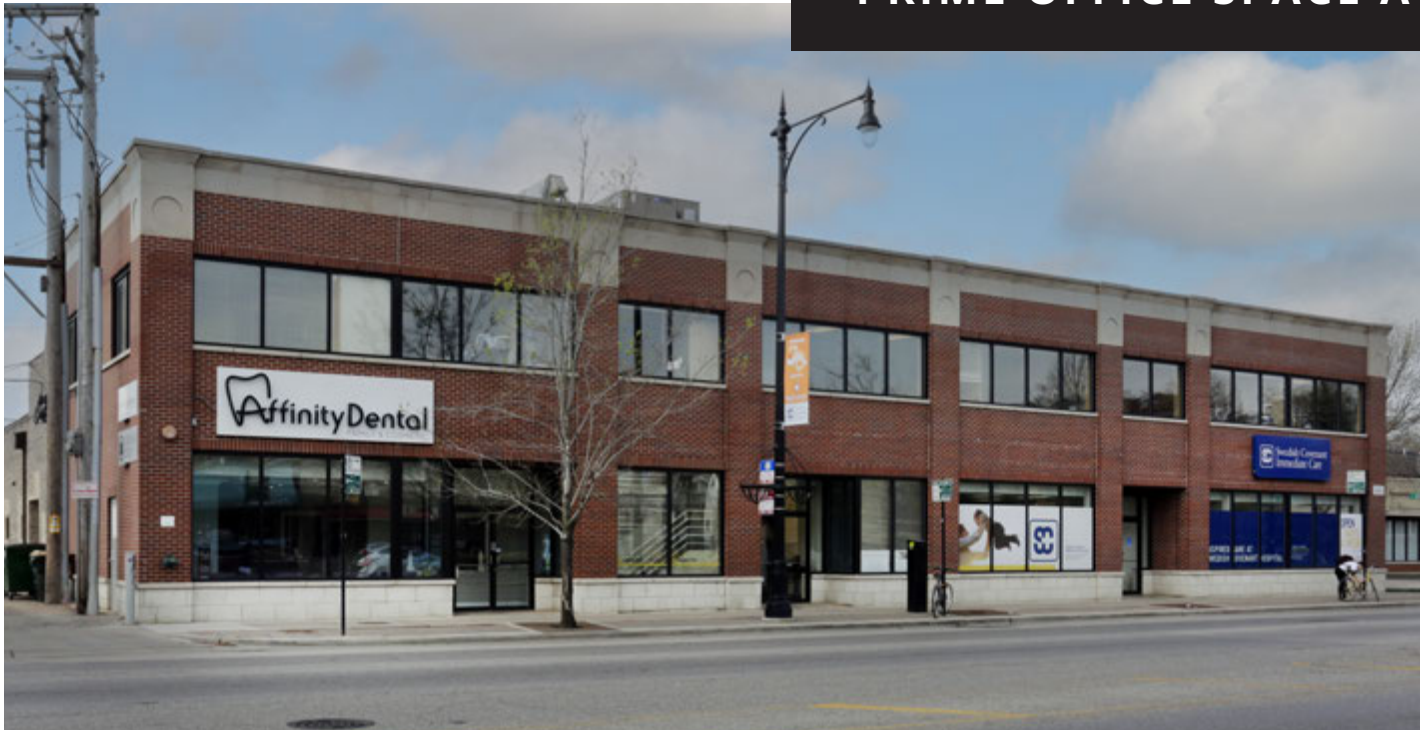


# North Center Place

2015-2019 W IRVING PARK RD



**PRIME OFFICE SPACE AVAILABLE: 6,150 SF**



# North Canter Place

## PROPERTY HIGHLIGHTS

- Exterior building signage available
- Elevator access
- High visibility free-standing building
- Easy access to CTA brown line, 2 blocks from Irving Park stop
  - » 21,378 Annual Riders at Irving Park
- 2 Miles to Lake Shore Drive or The Kennedy Expressway

## DEMOGRAPHICS

	½ MILE	1 MILE	2 MILES
TOTAL POPULATION	14,111	51,981	269,450
DAYTIME POPULATION	9,870	28,434	130,458
HOUSEHOLDS	7,090	27,381	138,805
AVG HH INCOME	\$230,179	\$209,564	\$156,268

## TRAFFIC COUNTS

W IRVING PARK RD	27K VPD
N LINCOLN AVE	3K VPD

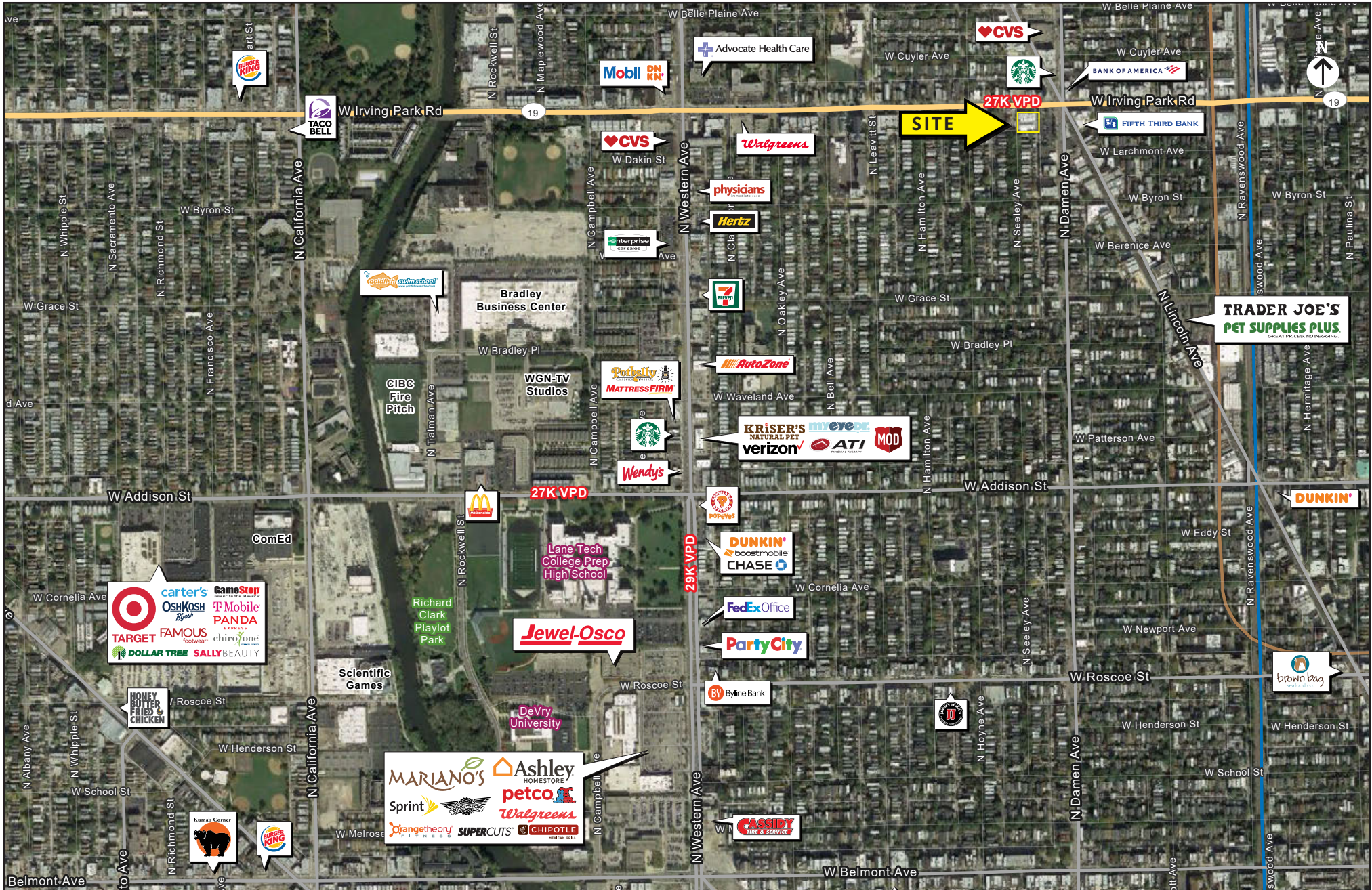
## WALK SCORE®

WALK SCORE	<b>96</b>	walker's paradise > daily errands do not require a car
TRANSIT SCORE	<b>65</b>	good transit > many nearby public transportation options
BIKE SCORE	<b>94</b>	biker's paradise > daily errands can be accomplished on a bike



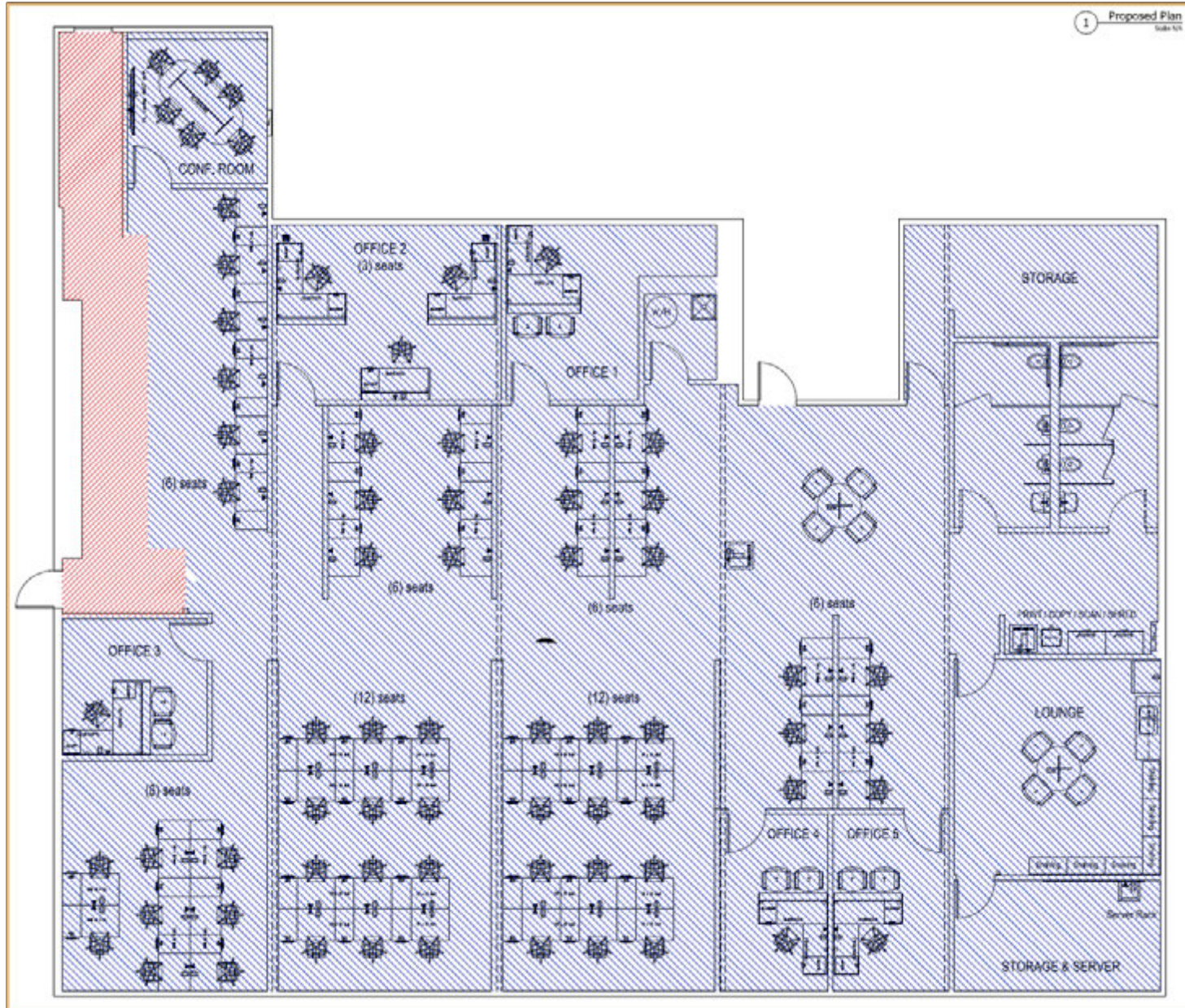
2017-2019 W IRVING PARK RD, CHICAGO, ILLINOIS

# North Center Place



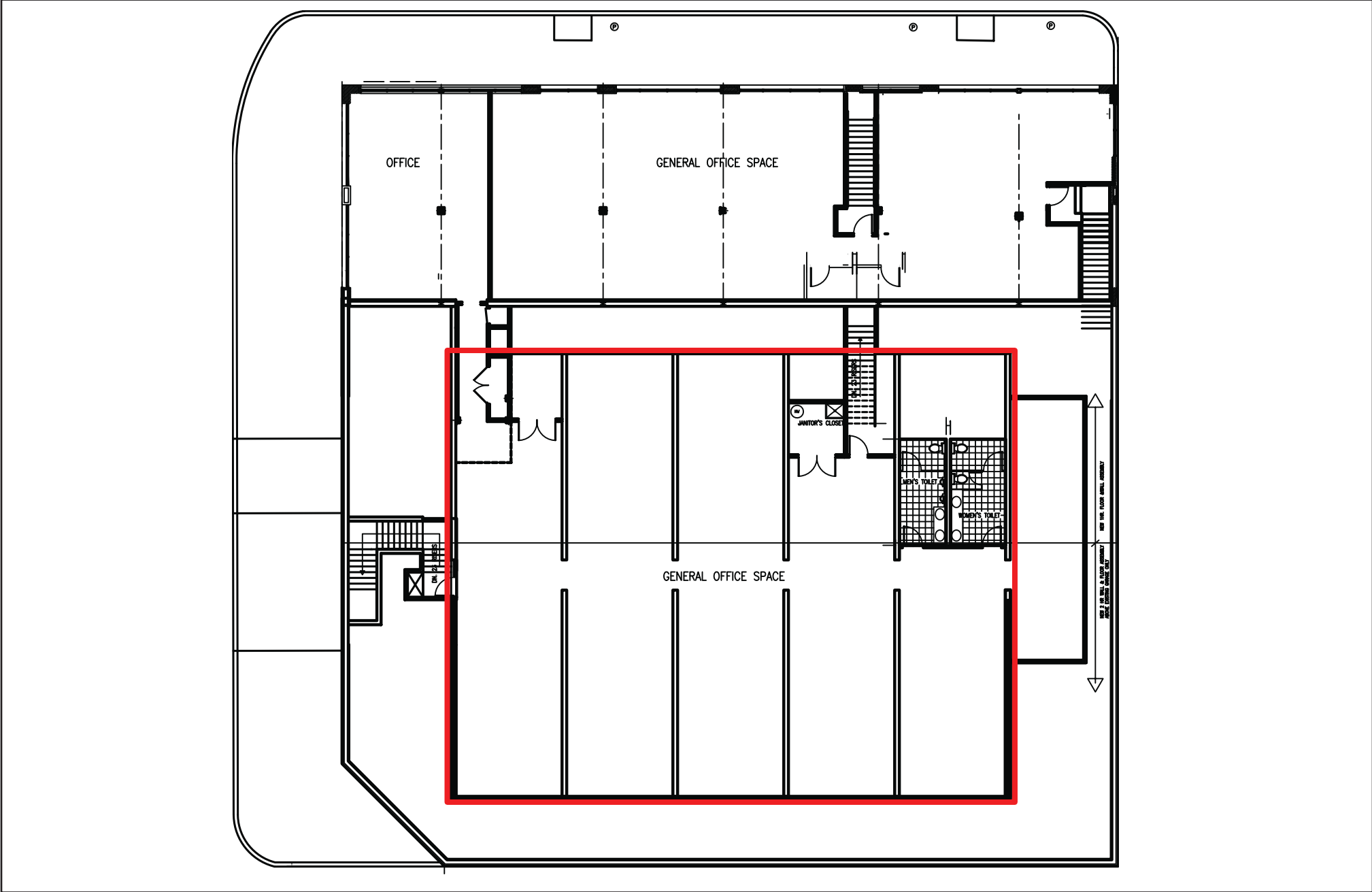
# North Center Place

2<sup>ND</sup> FLOOR | 6,150 SF



# North Center Place

2<sup>ND</sup> FLOOR | 6,150 SF





## Leasing Contacts

**CHELSEA HENDERSON**

CHENDERSON@METROCRE.COM

847.337.5287



[WWW.METROCRE.COM](http://WWW.METROCRE.COM)

© 2022 METRO COMMERCIAL REAL ESTATE. ALL RIGHTS RESERVED. ALL INFORMATION CONTAINED HEREIN IS FROM SOURCES DEEMED RELIABLE; HOWEVER, NO REPRESENTATION OR WARRANTY IS MADE TO THE ACCURACY THEREOF.