

# 580 CORPORATE CENTER

4025-4029 Tampa Road, Oldsmar, FL 34677



## PROPERTY HIGHLIGHTS

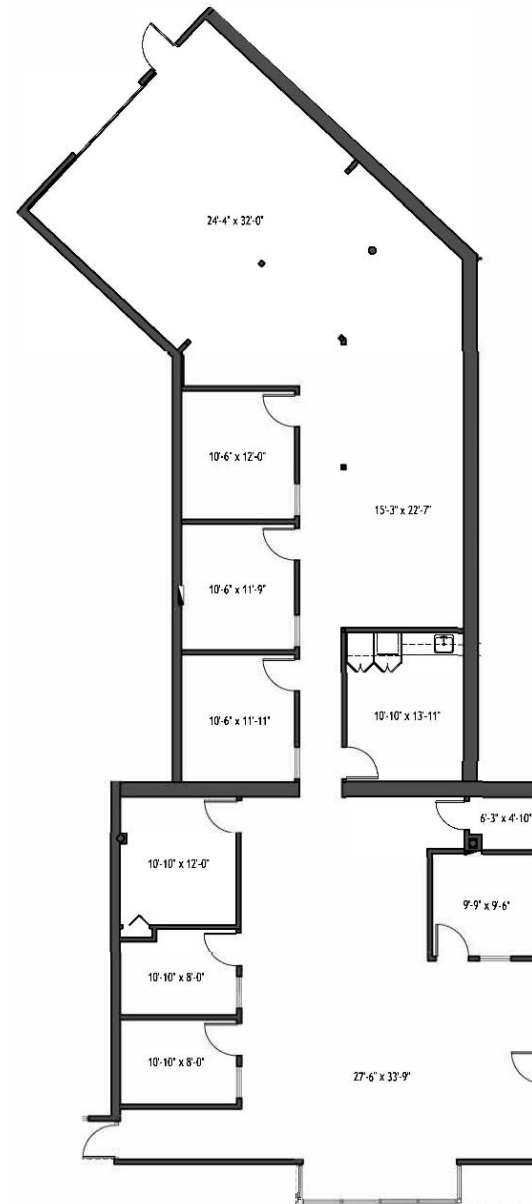
- Spaces available from 2,392 – 3,137 SF
- 6-Building Portfolio
- Excellent accessibility to North Pinellas County and Northwest Hillsborough County
- Dock-High Warehouse, Garden Office and Flex Space
- Frontage Directly on Tampa Road
- Convenient Access to Retail and Restaurants
- Close-proximity to Tampa International Airport

BLDG	FLOOR	SUITE	SF	AVAILABILITY
4025	1ST	1109	3,137	Available Now
4025	1 <sup>ST</sup>	1118	2,051	November 2024
4025	1ST	1116	2,750	November 2024
4025	2ND	1208	2,392	Available Now

# SUITE 1109

## OFFICE SPACE

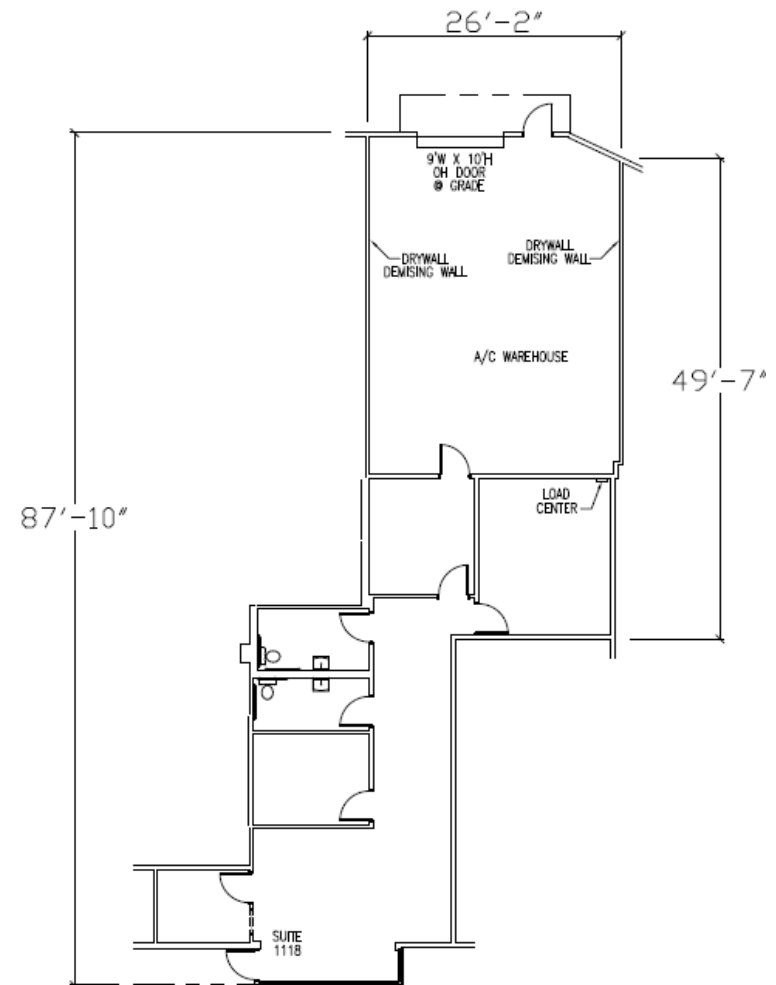
<b>FLOOR</b>	First Floor
<b>AVAILABLE SF</b>	3,137 SF
<b>AVAILABILITY</b>	Available Now



# SUITE 1118

## WAREHOUSE SPACE

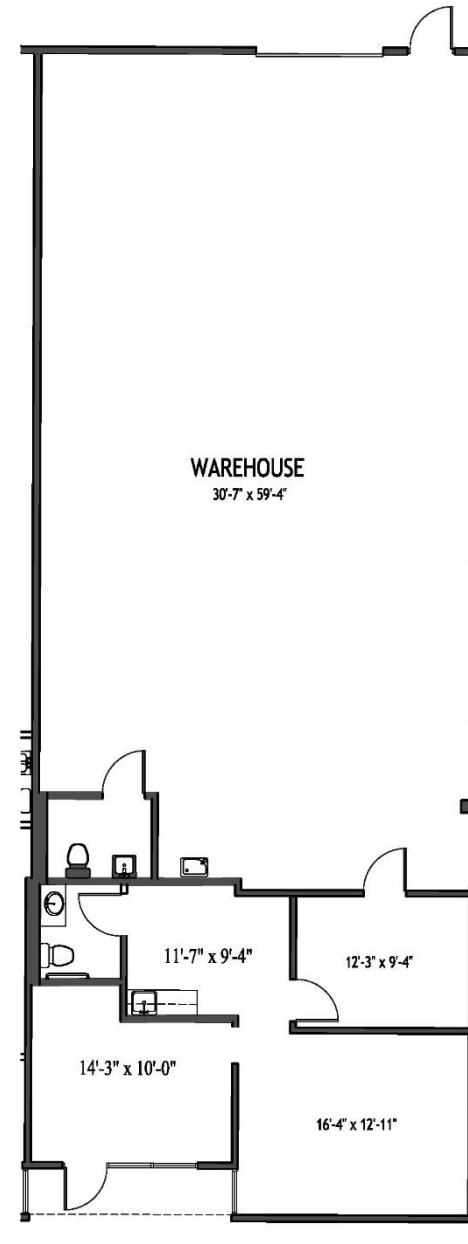
<b>AVAILABLE SF</b>	2,051 SF
<b>WAREHOUSE</b>	828 SF
<b>OFFICE</b>	1,223 SF
<b>LOADING</b>	One (1) Grade Level Door
<b>AVAILABILITY</b>	Available November 2024



# SUITE 1116

## WAREHOUSE SPACE

<b>AVAILABLE SF</b>	2,750 SF
<b>WAREHOUSE</b>	1,855 SF
<b>OFFICE</b>	895 SF
<b>LOADING</b>	One (1) Grade Level Door
<b>AVAILABILITY</b>	Available November 2024



# SUITE 1116

## OFFICE SPACE

FLOOR	Second Floor
AVAILABLE SF	2,392 SF
AVAILABILITY	Available Now

