

For sale

1001 Kimberton Road, Chester Springs, PA
6.63 acres located on Route 113 (22,322 VPD)



Property Details

6.63 acres

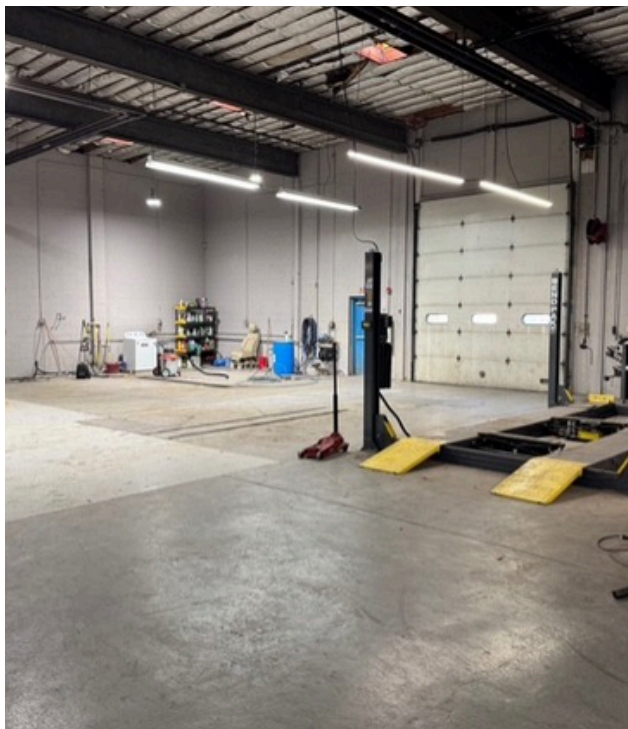
14,834 SF
Auto dealership/service shop

Showroom & offices

Ability for 9 service bays

6 drive-in doors

Existing 158 parking spaces with
ability to store 240 vehicles



Highlights



Secure fenced-in
storage area



Full-service café
including equipment



Fully renovated with new
roof, HVAC, water system,
and septic system



Located 0.34 miles from
Route 401 and 2.3 miles
from Route 100

Floor Plan



Site Plan





Scott Williams
Managing Director
Scotta.Williams@jll.com
+1 (610) 721 9912

Harrison Williams
Analyst
Harrison.Williams@jll.com
+1 (610) 387 5092

Jones Lang LaSalle Brokerage, Inc.
550 E. Swedesford Road, Suite 260
Wayne, PA 19087
+1 (610) 249 2255