

LIGHT INDUSTRIAL SPACES FOR LEASE

2350 WHITMAN RD, CONCORD, CA 94518



Dan Moylan
dmoylan@lee-associates.com
D 925.239.1427

All information furnished regarding property for sale, rental or financing is from sources deemed reliable, but no warranty or representation is made to the accuracy thereof and same is submitted to errors, omissions, change of price, rental or other conditions prior to sale, lease or financing or withdrawal without notice. No liability of any kind is to be imposed on the broker herein.

UNIT D HIGHLIGHTS

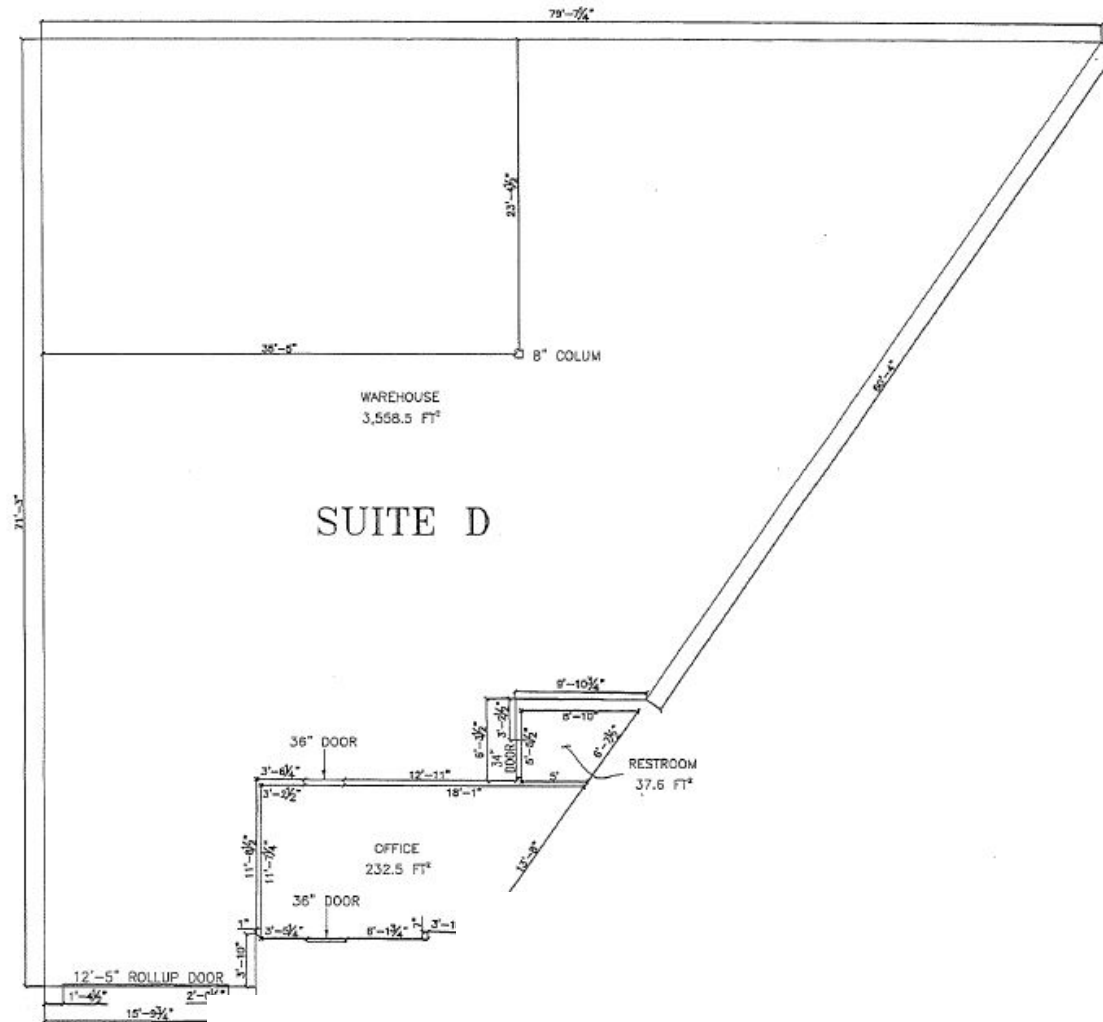
- $\pm 4,104$ SF (Approx. $\pm 3,900$ SF Warehouse/
 ± 200 SF Office)
- Lease Rate: \$6,566/month (\$1.60/SF) I.G.
- Great location, near Concord Costco
- Approx. 18' min. clearance in warehouse
- One (1) grade level truck door (12'x14')
- New LED lighting in office & warehouse
- Two (2) large skylights
- 100 Amp 120/208V, 3-Phase, separately metered
- New paint, carpet, restroom fixtures and office air-conditioning unit

UNIT G HIGHLIGHTS

- $\pm 3,193$ SF
- Lease Rate: \$5,108.80/month (\$1.60 PSF)
- Approx. 18' min. clearance in warehouse
- One (1) grade level truck door (12'x14')
- Two (2) large skylights
- Ample on-site parking
- 100 Amp 120/208V, 3-Phase, separately metered

LIGHT INDUSTRIAL SPACES FOR LEASE

2350 WHITMAN RD, CONCORD, CA 94518



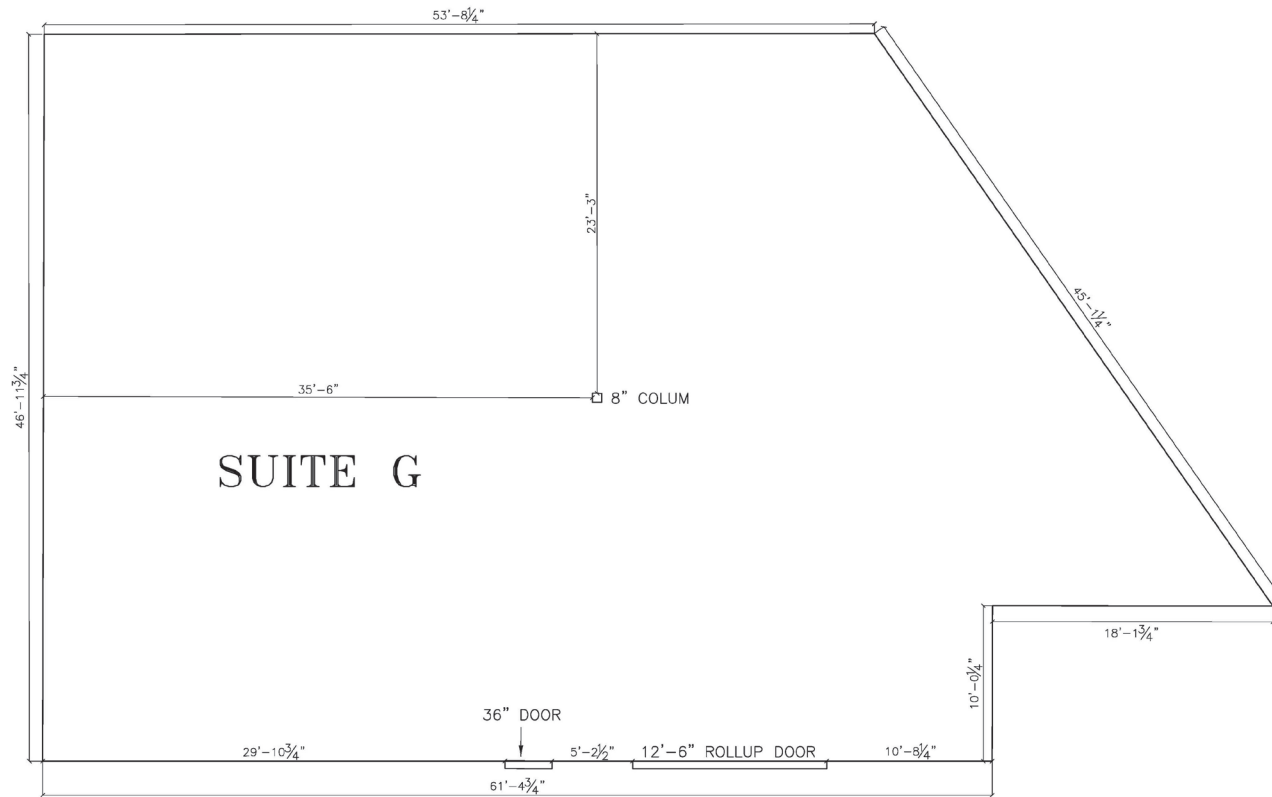
FLOOR PLAN

Dan Moylan
dmoylan@lee-associates.com
D 925.239.1427

All information furnished regarding property for sale, rental or financing is from sources deemed reliable, but no warranty or representation is made to the accuracy thereof and same is submitted to errors, omissions, change of price, rental or other conditions prior to sale, lease or financing or withdrawal without notice. No liability of any kind is to be imposed on the broker herein.

LIGHT INDUSTRIAL SPACES FOR LEASE

2350 WHITMAN RD, CONCORD, CA 94518



FLOOR PLAN

Dan Moylan
dmoylan@lee-associates.com
D 925.239.1427

All information furnished regarding property for sale, rental or financing is from sources deemed reliable, but no warranty or representation is made to the accuracy thereof and same is submitted to errors, omissions, change of price, rental or other conditions prior to sale, lease or financing or withdrawal without notice. No liability of any kind is to be imposed on the broker herein.

LIGHT INDUSTRIAL SPACES FOR LEASE

2350 WHITMAN RD, CONCORD, CA 94518



AMENITIES MAP

Dan Moylan
dmoylan@lee-associates.com
D 925.239.1427

All information furnished regarding property for sale, rental or financing is from sources deemed reliable, but no warranty or representation is made to the accuracy thereof and same is submitted to errors, omissions, change of price, rental or other conditions prior to sale, lease or financing or withdrawal without notice. No liability of any kind is to be imposed on the broker herein.