



Prime Golden Triangle Location

Thrive. Work. Grow.

Building Information:

Building Size	48,025 sf
Lot Size	3.76 acres
Parking	50 surface spaces
Possession	Immediate
Sale Price	Negotiable
Year Built	1980
Zone	I-2 Industrial Park
Docks	7 Dock-high doors 3 Drive-ins



Functional mix of warehouse and office space



Multiple dock high doors for efficient loading



Convenient access to nearby freeways



Ample employee and trailer parking

Get more information:

Erik Heltne, Executive Vice President
D 612.237.9226
erik.heltne@avisonyoung.com

Brian Helmken, Executive Vice President
D 612.701.8787
brian.helmken@avisonyoung.com

Addison Althoff, Associate
D 612.473.6987
addison.althoff@avisonyoung.com

For sale

10100 Crosstown Cir.

Summary

Avison Young is pleased to present a 48,025 SF industrial facility located on 3.76 acres at the prominent intersection of Hwy 169, Hwy 62, and Hwy 212. The building includes 44,668 SF of warehouse space and 3,357 SF of office space, along with 7 dock-high doors, 3 drive-in doors, and 50 parking stalls. With a clear height of 20 feet, the property offers excellent functionality, strong visibility, and valuable signage opportunities along Hwy 212.



For sale

10100 Crosstown Cir.



13.2 Miles from
MSP Airport



Truck routes
located nearby



Close to Eden Prairie
shopping district



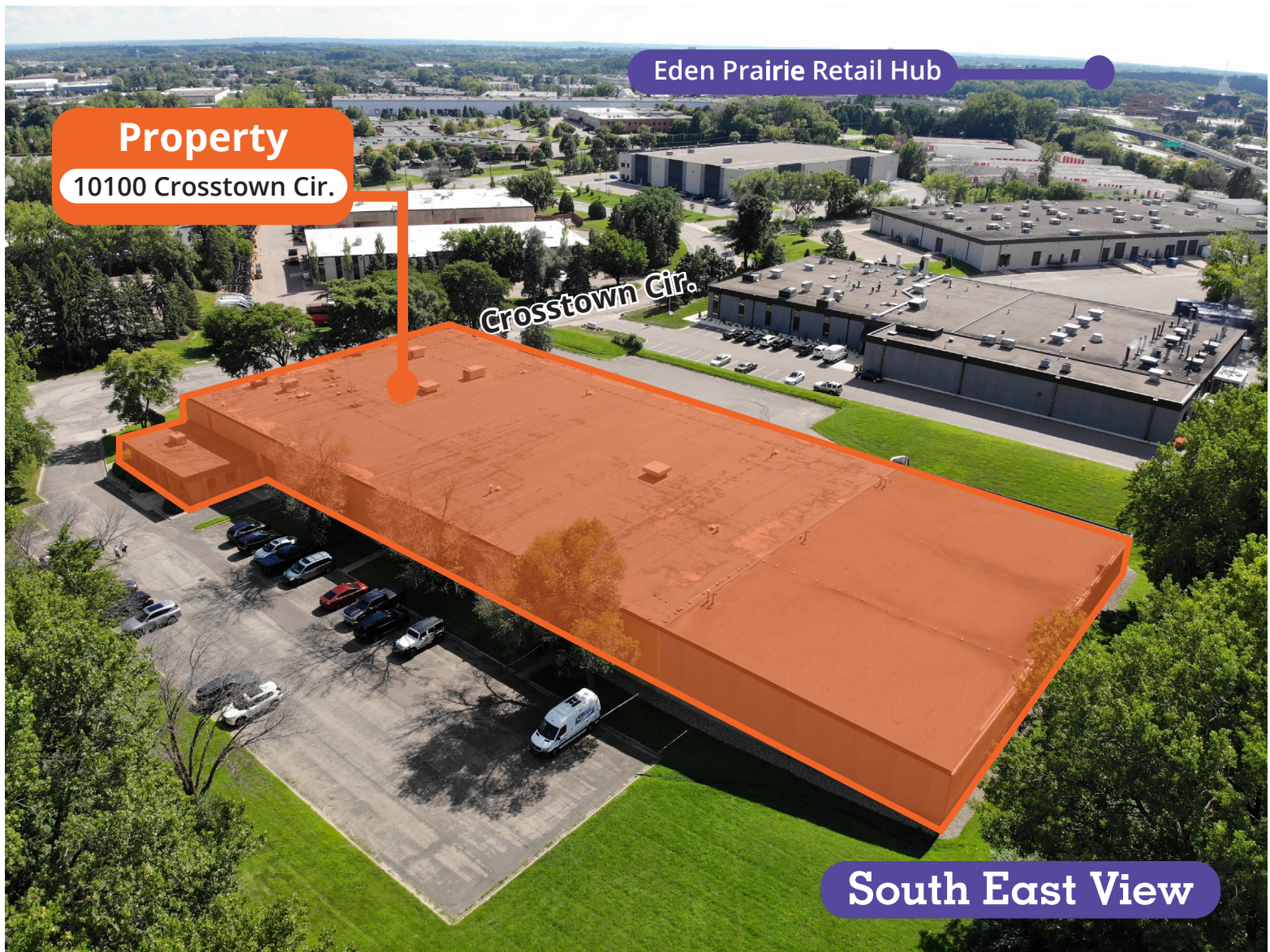
Hwy accessibility
169, 212, and I-494



Demographics:	2 Miles	5 Miles	10 Miles
2024 Population	23,634	219,811	864,862
2024 Households	10,728	94,897	370,403
Avg. H.H. Income	\$128,983	\$129,301	\$116,113

For sale

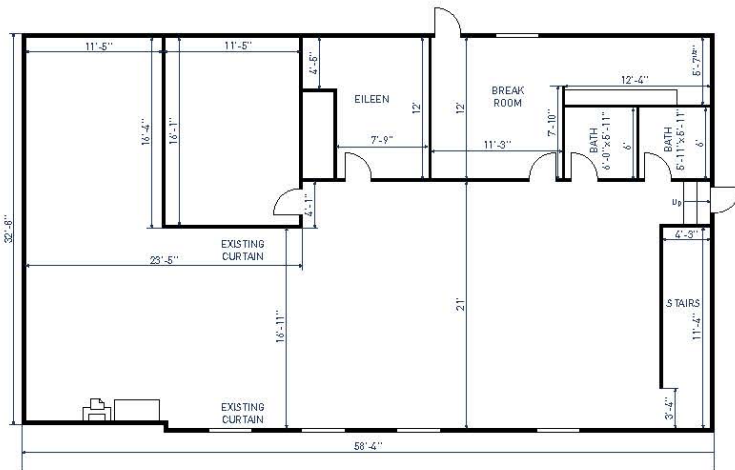
10100 Crosstown Cir.



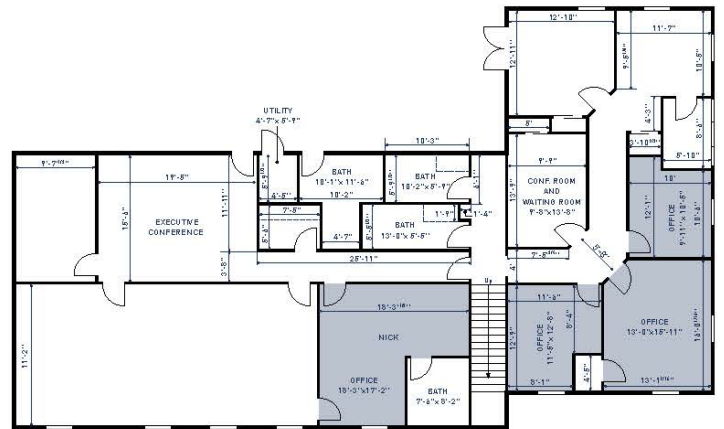
For sale

10100 Crosstown Cir.

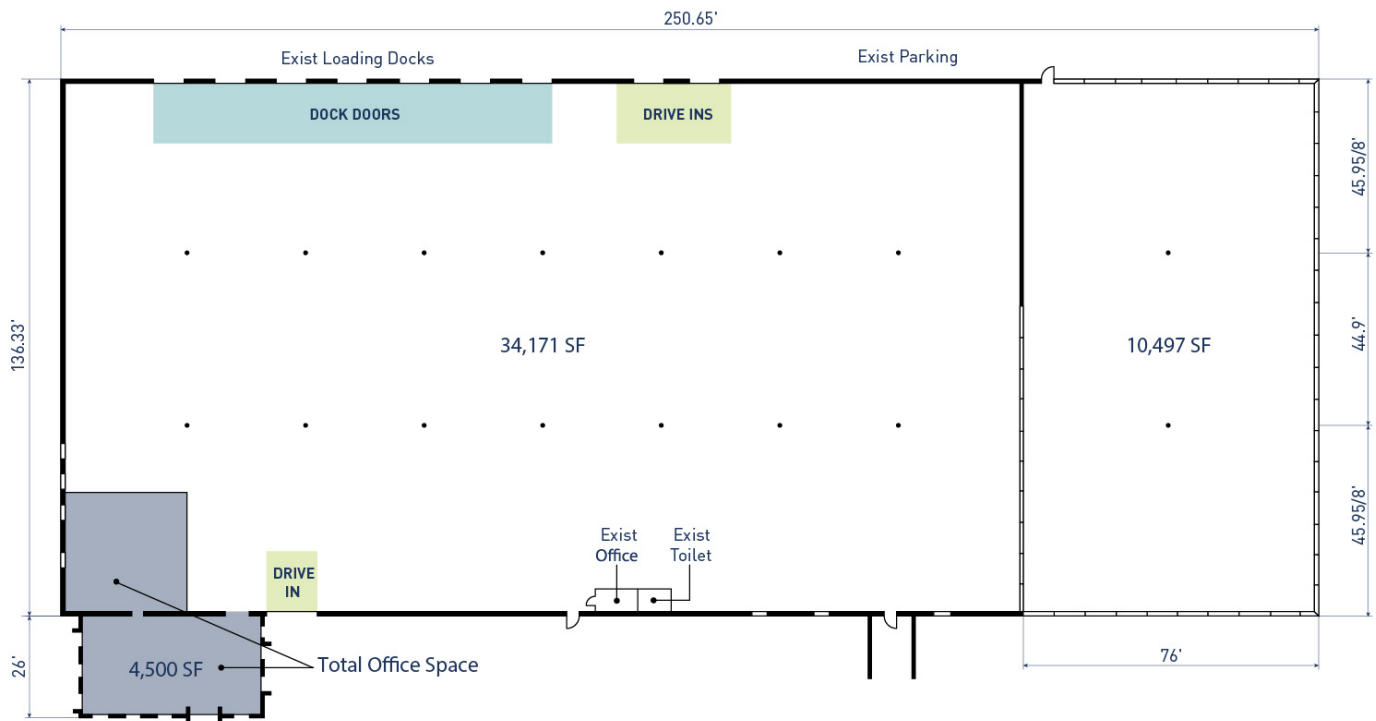
Office Plan



Office Plan



Warehouse Plan



**AVISON
YOUNG**

For sale

10100 Crosstown Cir.



Get more information:

Erik Heltne | D. 612.237.9226 | erik.heltne@avisonyoung.com

Brian Helmken | D. 612.701.8787 | brian.helmken@avisonyoung.com

Addison Althoff | D. 612.473.6987 | addison.althoff@avisonyoung.com

Avison Young Minneapolis | 1601 Utica Ave S | Minneapolis, MN 55416 | 612 913 5640 © 2025 Avison Young - Michigan, LLC. All rights reserved.
E. & O.E.: The information contained herein was obtained from sources which we deem reliable and, while thought to be correct, is not guaranteed by Avison Young.

**AVISON
YOUNG**
avisonyoung.com