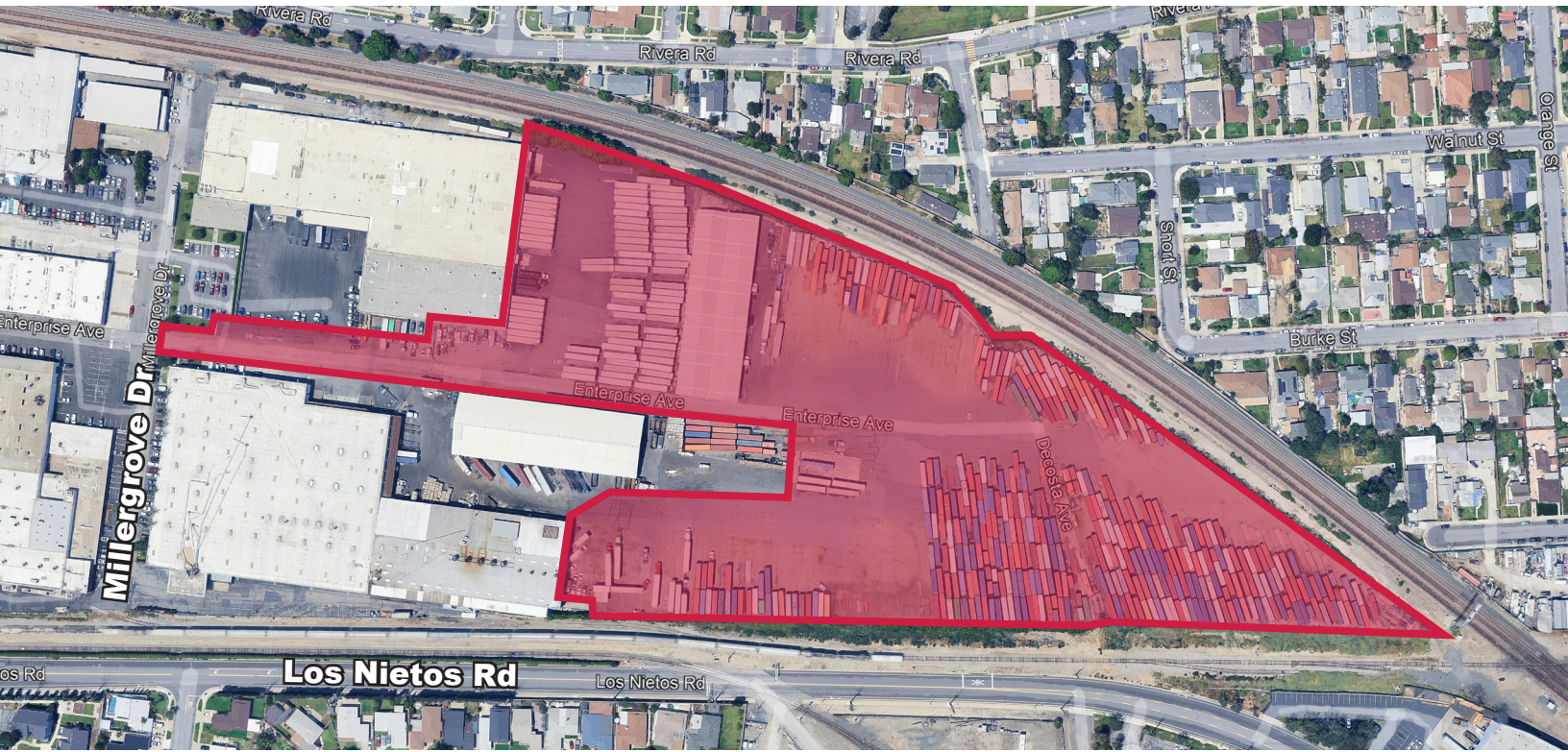


# FOR SUBLEASE TRUCKING/TRAILER STORAGE YARD






±1 - ±14.6 Acres

**LEE & ASSOCIATES**  
COMMERCIAL REAL ESTATE SERVICES

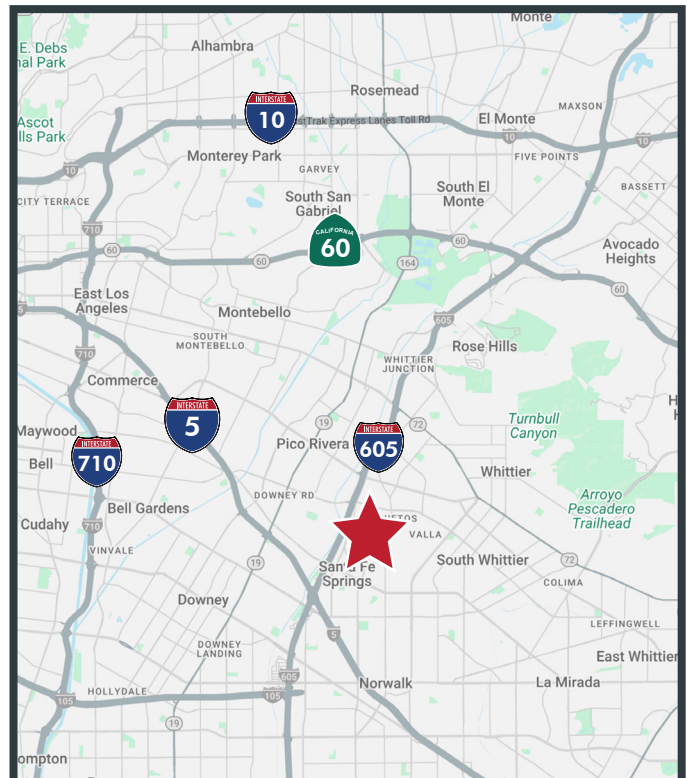


**8844 Millergrove Drive, Santa Fe Springs, CA**

## Property Features

- ±1 - ±14.6 Acres
- Trucking / Trailer Storage Yard - Other Uses Considered
- Asphalt Surface
- Fully Lit & Fenced
- Security Cameras & 24/7 Live Guards
- 24/7 Remote Dispatch Monitoring
- Electricity, Water, & Internet
- Yard Hostler Assistance
- Inventory Management via Proprietary YMS with Automated Email Inventory Reports and EDI Integration
- Lease Expiration: November 30, 2029
- Excellent Access to the , , , ,  Freeways

**Skyler Serrano**  
Senior Vice President  
Lic #01790959  
949.790.3180  
[sserrano@leeirvine.com](mailto:sserrano@leeirvine.com)



**DISCLAIMER:** The information contained herein has been obtained from the property owner or other third party and is provided to you without verification as to accuracy. We (Lee & Associates, its brokers, employees, agents, principals, officers, directors and affiliates) make no warranty or representation regarding the information, property, or transaction. You and your attorneys, advisors and consultants should conduct your own investigation of the property and transaction.