

FOR LEASE

662 QUAIL GARDEN CORPORATE CENTER

CREATIVE OFFICE SPACE

PETER CURRY

+1 760 431 4238

peter.curry@cushwake.com

LIC #01241186

OWEN CURRY

+1 760 431 4229

owen.curry@cushwake.com

LIC #01972528





QUAIL GARDEN CORPORATE CENTER

662 ENCINITAS BLVD., ENCINITAS CA

Located on the north side of Encinitas Boulevard, near the intersection of Quail Gardens Drive.

The project is a single story wood frame construction, built upon an elevated concrete terrace over parking. The building encompasses approximately 33,917 square feet with parking on site for 123 vehicles. The development implements sustainable design strategies including natural day-lighting & ventilation, energy efficient lighting & mechanical systems, rainwater collection and recycled material use.

Architecturally, the building has a contemporary expression, with simple roof forms, abundant windows, sensitive landscaping and a scale responsive to its neighborhood context.

FEATURES

- » Extensive glass with operable windows
- » Creative space plans with high ceilings & exposed open beams
- » Covered parking
- » Easy I-5 access
- » Near retail & residential
- » Exposure to 32,400 cars per day
- » Prime Encinitas location
- » Innovative "Green" design
- » Shower facilities

LEASE RATE



\$3.75 - 4.25/RSF + Utilities & Janitorial

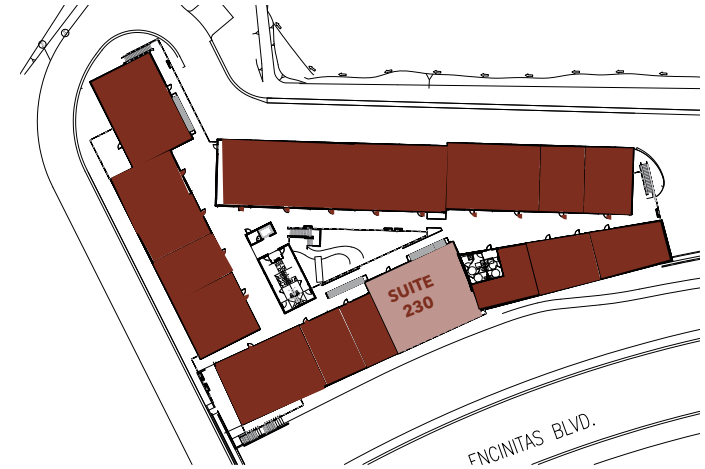
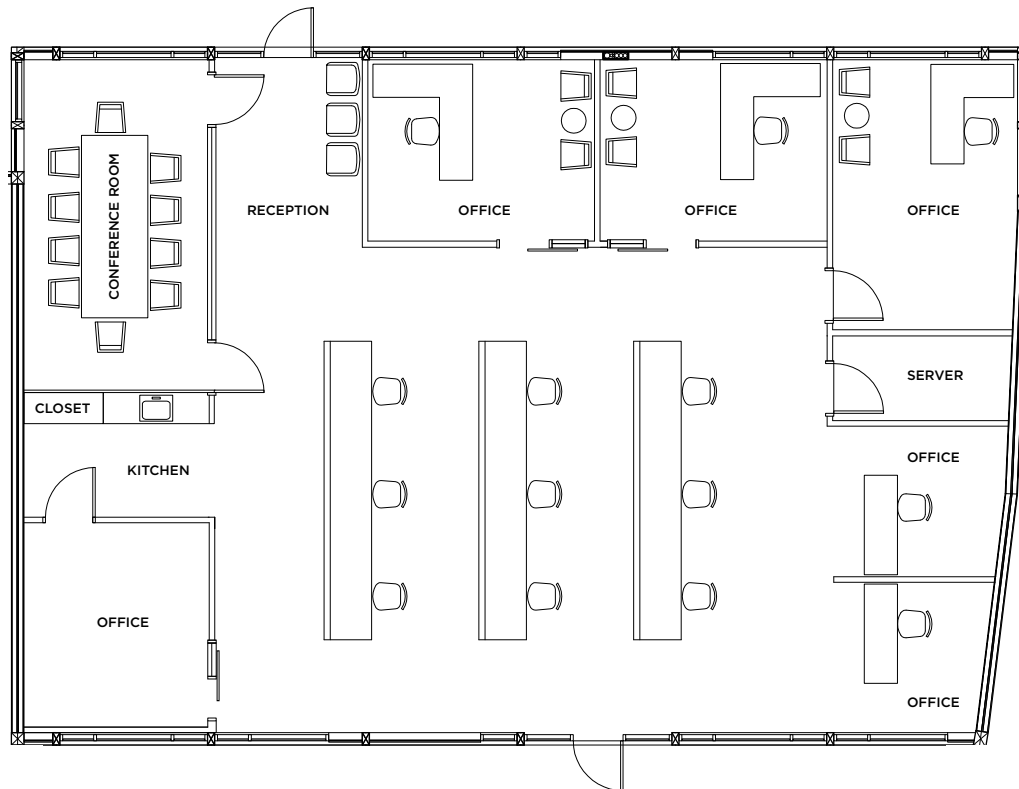


**CUSHMAN &
WAKEFIELD**

662 QUAIL GARDEN CORPORATE CENTER

Creative Office | floor plan

SUITE 230: 2,903 RSF



view virtual tour
<https://my.matterport.com/show/?m=dxoSAbQqZSn>

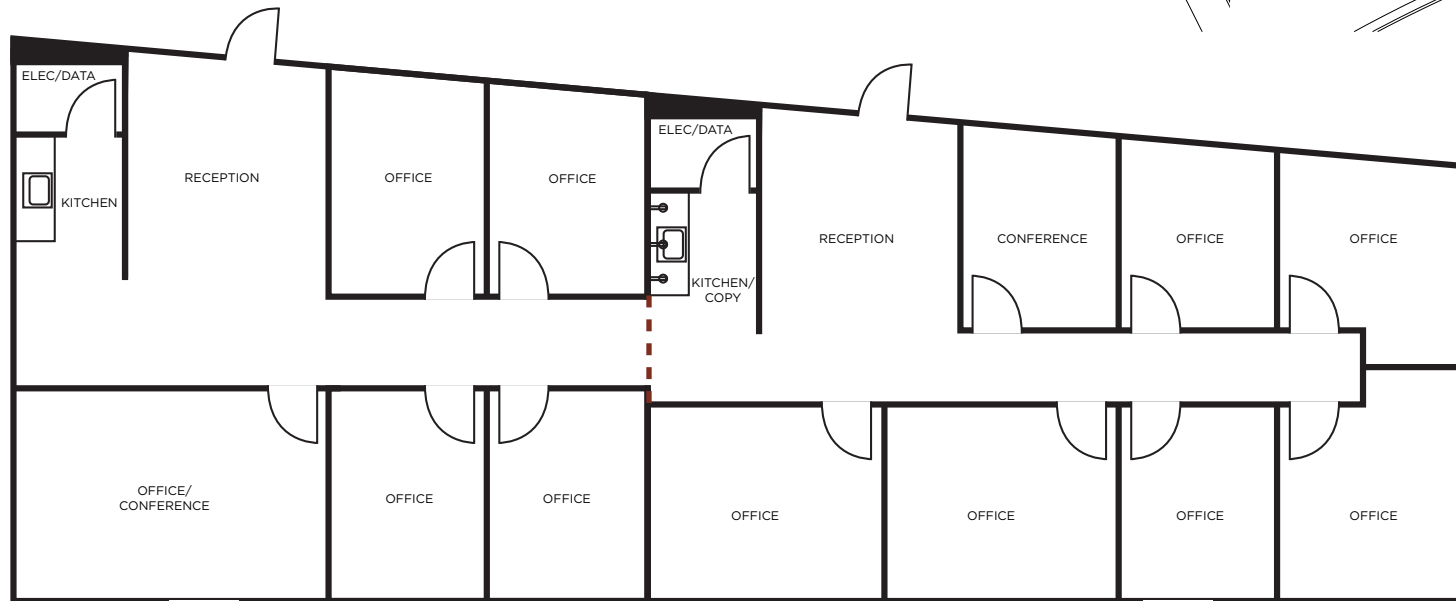
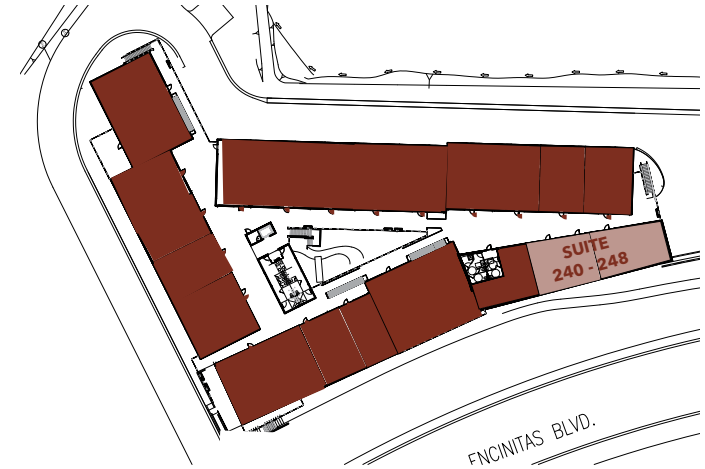
662 QUAIL GARDEN CORPORATE CENTER

Creative Office | floor plan

SUITE 240-248: 2,986 RSF

Suite 240: 1,384 RSF

Suite 248: 1,602 RSF



662 QUAIL GARDEN CORPORATE CENTER

Location



PETER CURRY

+1 760 431 4238

peter.curry@cushwake.com

LIC #01241186

OWEN CURRY

+1 760 431 4229

owen.curry@cushwake.com

LIC #01972528



**CUSHMAN &
WAKEFIELD**

12830 El Camino Real, Suite 100

San Diego, CA 92130

T +1 760 431 4200

F +1 760 454 3869

www.cushwake.com