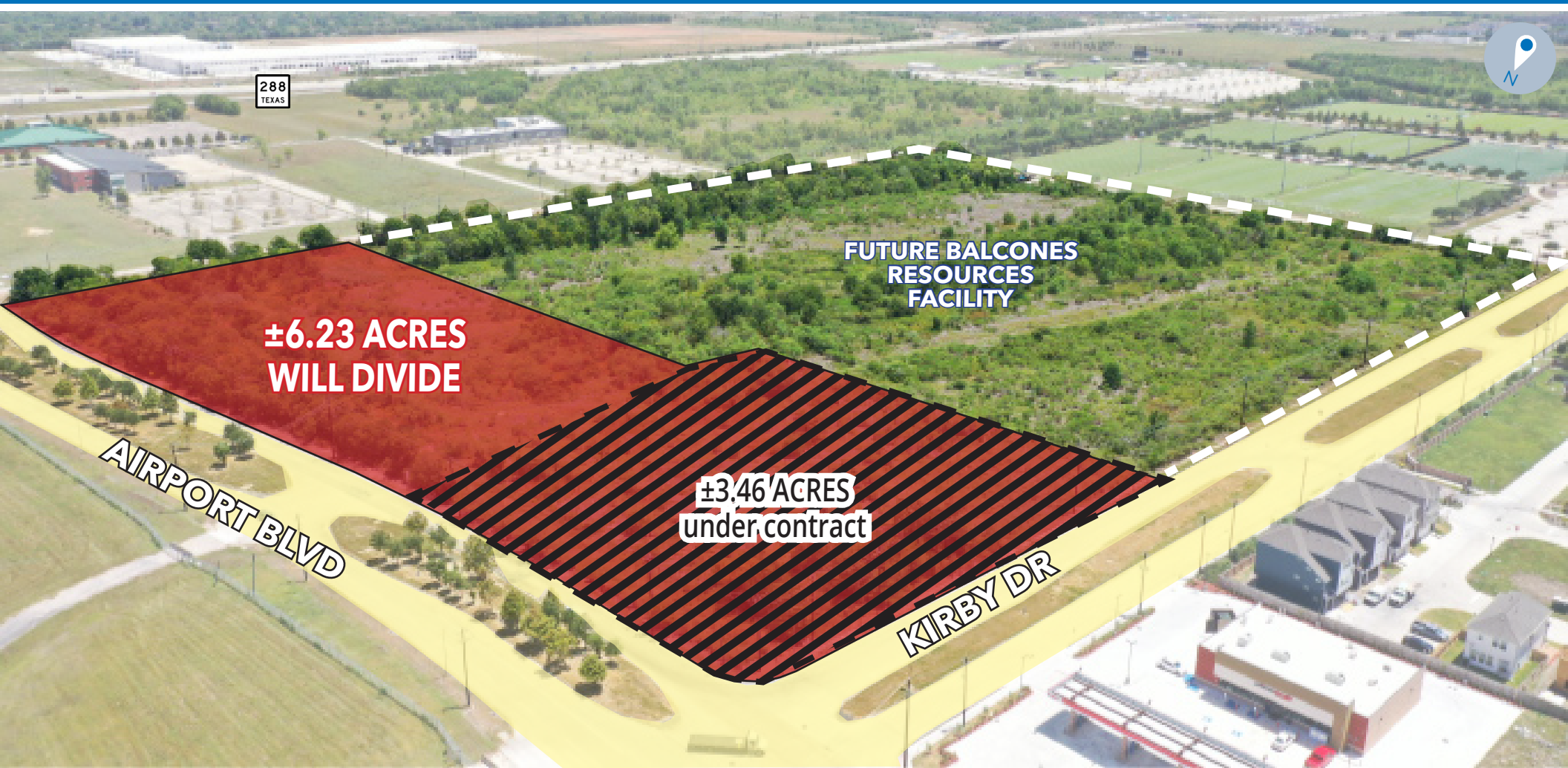


±6.23 ACRES OF LAND FOR SALE



SEC of Airport Blvd & Kirby Dr

The information provided herein was obtained from sources believed reliable; however, Transwestern makes no guarantees, warranties or representations as to the completeness or accuracy thereof. The presentation of this property is submitted subject to errors, omissions, change of price or conditions, prior sale or lease, or withdrawal without notice. Copyright © 2023 Transwestern.

PROPERTY HIGHLIGHTS

Location	SEC of Airport Blvd and Kirby Dr Houston TX, 77045
Land Size	±6.23 Acres (Will Divide)
Frontage	±1,121' on Airport Blvd ±407' on Kirby Drive
Restrictions	Seller Intends to Deed Restrict Against Residential Use
Detention	Regional Detention Provided
Utilities	City of Houston
Pricing	Call Broker



OWNER WILL DIVIDE



PROPERTY FACING SOUTH



PROPERTY FACING WEST



PROPERTY FACING SOUTHEAST



PROPERTY FACING NORTH

DEMOGRAPHICS



POPULATION

1 Mile	3 Miles	5 Miles
3,132	78,807	272,650



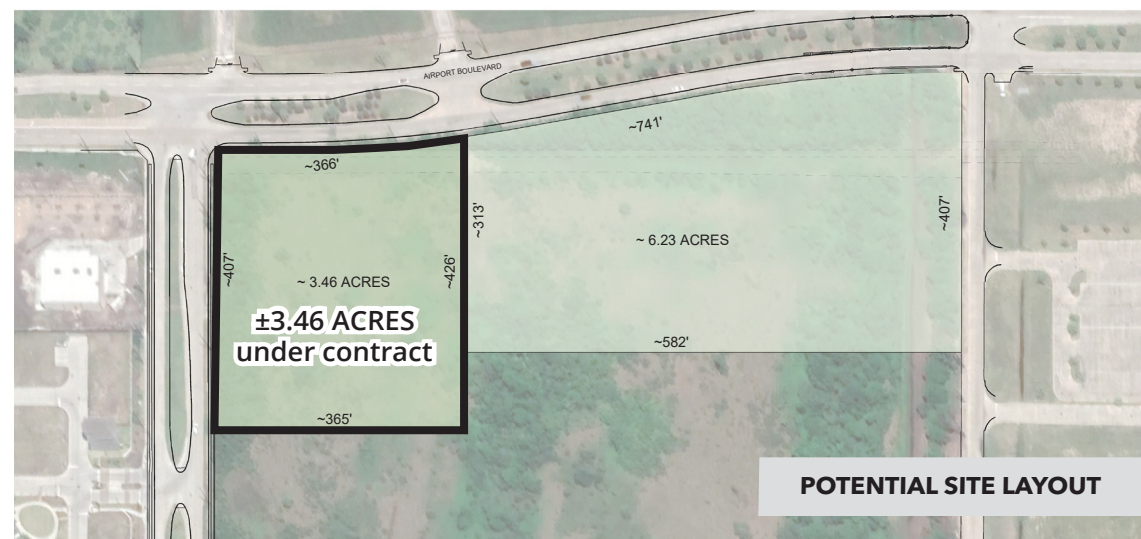
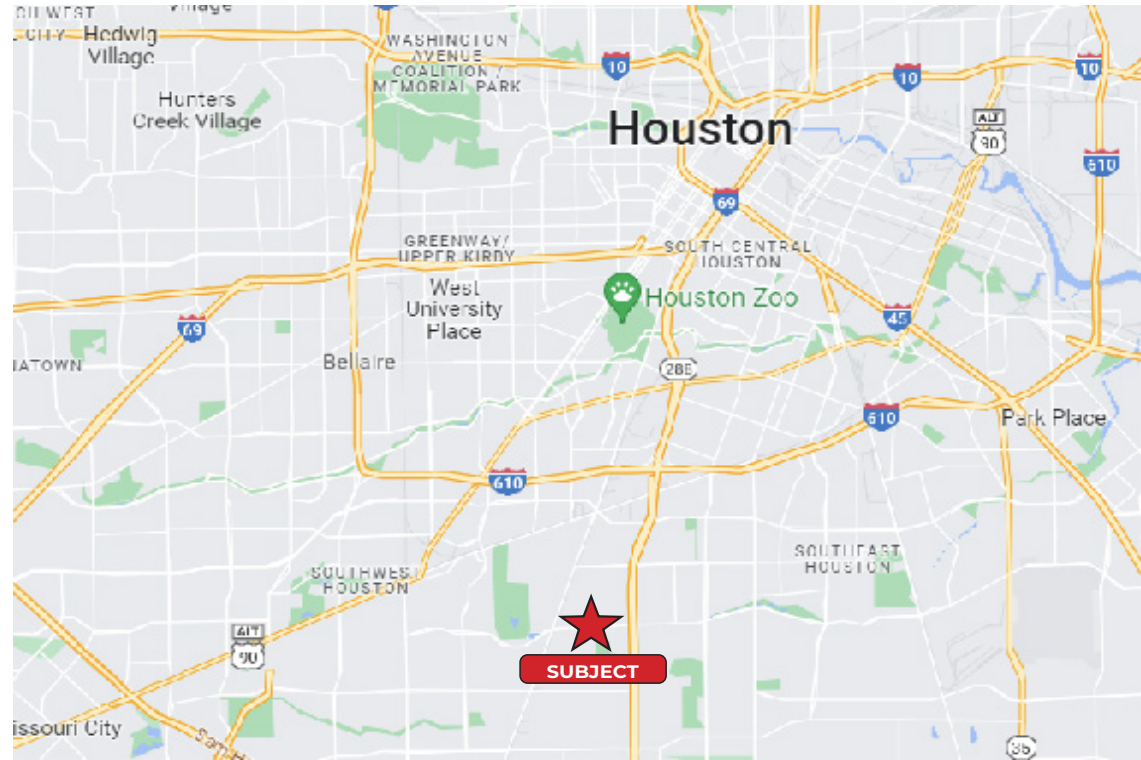
WORKERS

1 Mile	3 Miles	5 Miles
675	24,567	228,394

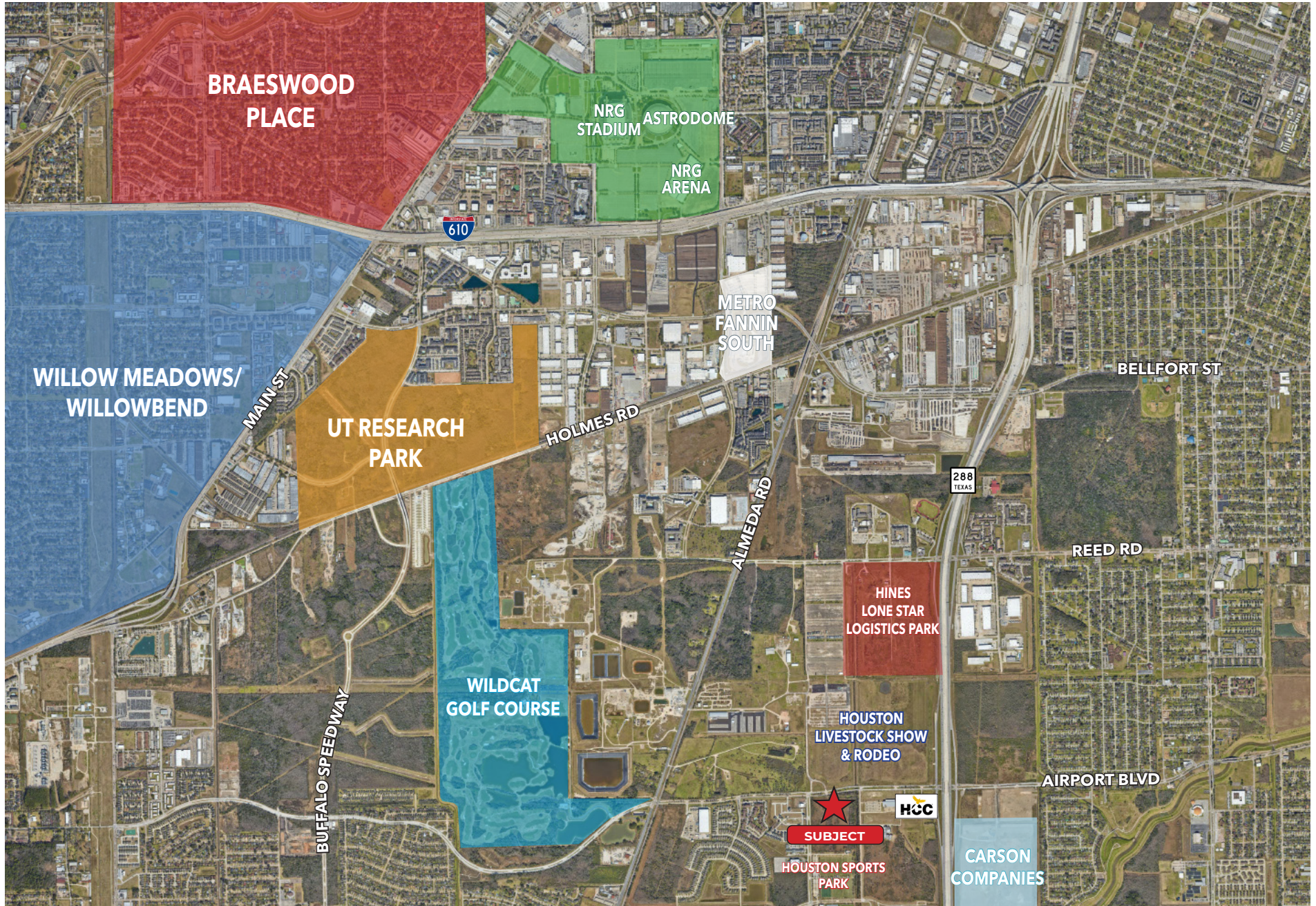


HOUSEHOLDS

1 Mile	3 Miles	5 Miles
1,204	29,405	102,797



AREA ACTIVITY



PROXIMITY MAP





The information provided herein was obtained from sources believed reliable; however, Transwestern makes no guarantees, warranties or representations as to the completeness or accuracy thereof. The presentation of this property is submitted subject to errors, omissions, change of price or conditions, prior sale or lease, or withdrawal without notice. Copyright © 2023 Transwestern.

Contact Information:

Scott E. Miller
Senior Director
713.231.1637
scott.miller@transwestern.com

Jeff G. Peden, SIOR
Executive Managing Director
713.231.1640
jeff.peden@transwestern.com