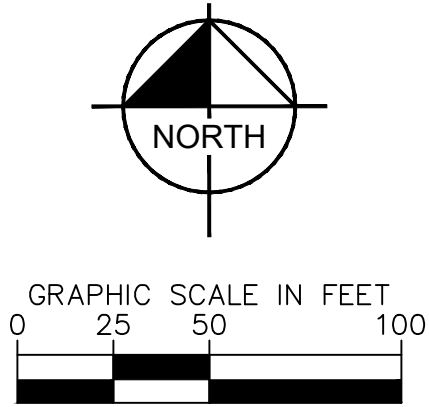
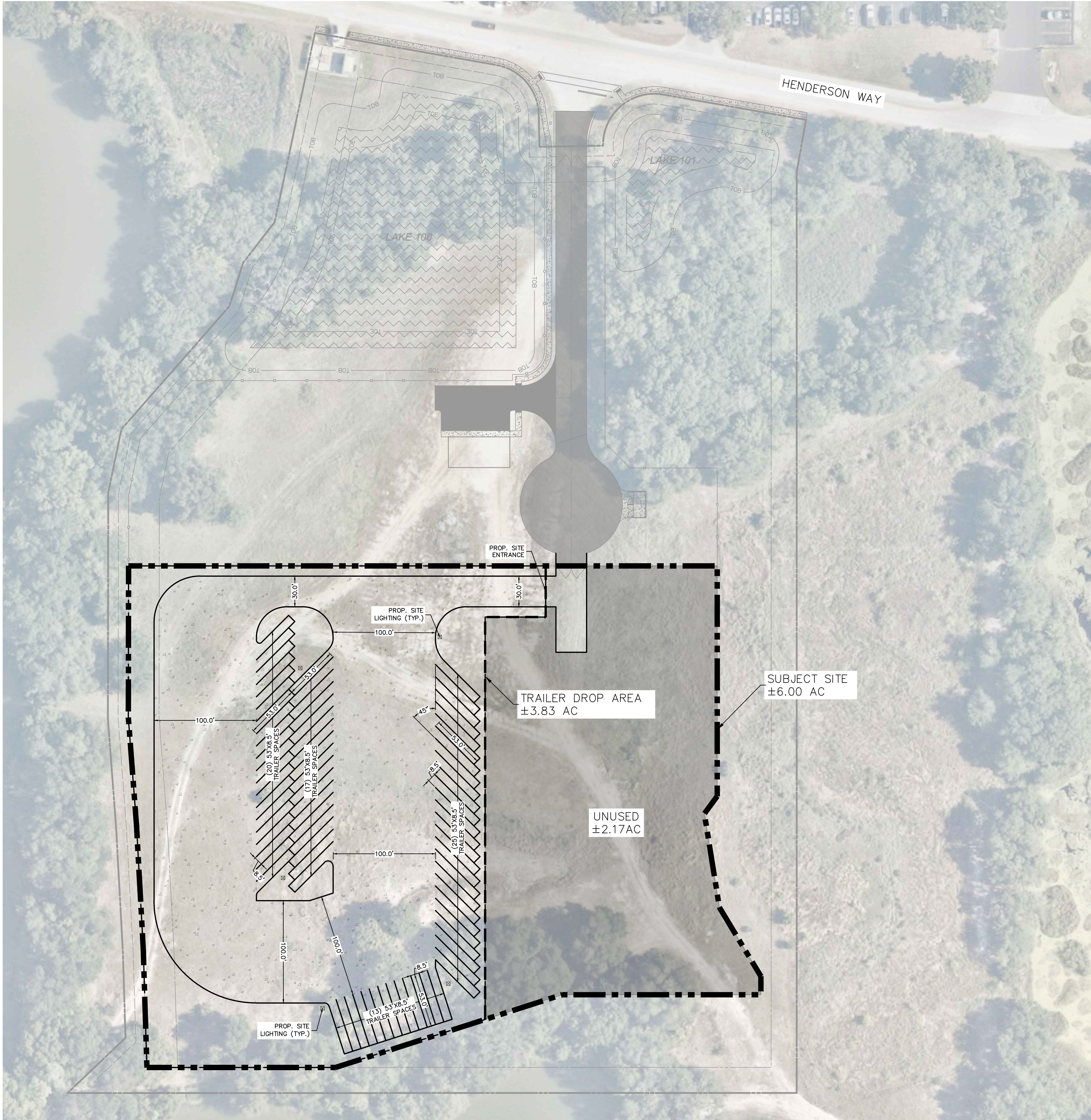


This document, together with the concepts and designs presented herein, as an instrument of service, is intended only for the specific purpose and client for which it was prepared. Reuse of and improper reliance on this document without written authorization and adaptation by Kimley-Horn and Associates, Inc. shall be without liability to Kimley-Horn and Associates, Inc.



HENDERSON WAY - PLANT CITY, FL


PARCELS:  
PROJECT AREA:        ±6.00    AC

AREA BREAKDOWN:

TRUCK PARKING:	3.83	AC
UNUSED SPACE:	2.17	AC
TOTAL	6.00	AC

PARKING:  
  
PROVIDED TRAILER PARKING                75    SPACES

- NOTES:
1. PROPERTY LINES SHOWN ARE APPROXIMATE AND WILL REQUIRE VERIFICATION.
  2. THIS PLAN IS CONCEPTUAL IN NATURE AND IS SUBJECT TO CHANGE BASED ON END-USER AND LOCAL AHJ'S SPECIFIC REQUIREMENTS.
  3. A VEHICLE MOBILITY ANALYSIS WAS NOT CONDUCTED. FUNCTIONALITY AND CIRCULATION WILL REQUIRE VERIFICATION.

A1	HENDERSON WAY SITE PLAN  PLANT CITY, FL.	<div><div>KHA PROJECT XXX</div><div>DATE 11/26/2024</div><div>SCALE AS SHOWN</div><div>DESIGNED BY RW</div><div>DRAWN BY NR</div><div>CHECKED BY BMS</div></div>	<div><div>© 2024 KIMLEY-HORN AND ASSOCIATES, INC. 200 S. ORANGE AVENUE SUITE 600 ORLANDO FL 32801 PHONE: 407-898-1511 WWW.KIMLEY-HORN.COM REGISTRY No. 35106</div></div>	REVISIONS		DATE	BY
				No.			