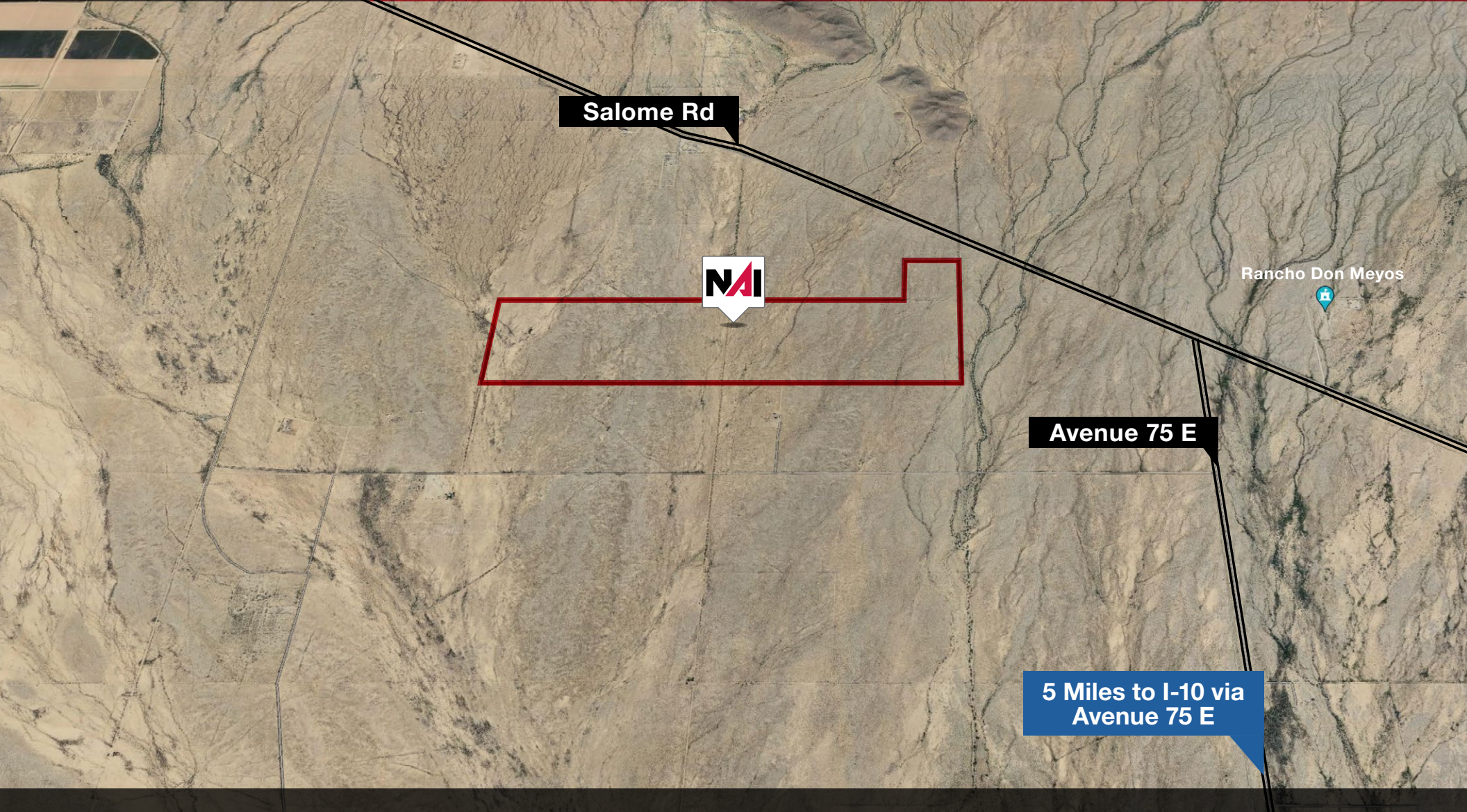


Call Broker
for Pricing

La Paz County Solar Land For Sale

±680AC 56th Street N. and Salome Rd, La Paz County, AZ 85348



Salome Rd



Rancho Don Meyos

Avenue 75 E

5 Miles to I-10 via
Avenue 75 E

Lane Neville | lane.neville@naihormon.com | +1 602 393 6726
Cole Neville | cole.neville@naihormon.com | +1 602 393 6606
Whitney Heritage | whitney.heritage@naihormon.com | +1 602 393 6783
Matt Westra | matt.westra@naihormon.com | +1 602 393 6667
Brandon Hall | brandon.hall@naihormon.com | +1 602 393 6668

NAIHorizon

2944 N 44th St, Suite 200, Phoenix, AZ 85018 | +1 602 955 4000 | naihormon.com

La Paz County Solar Land For Sale

±680AC 56th Street N. and Salome Rd, La Paz County, AZ 85348

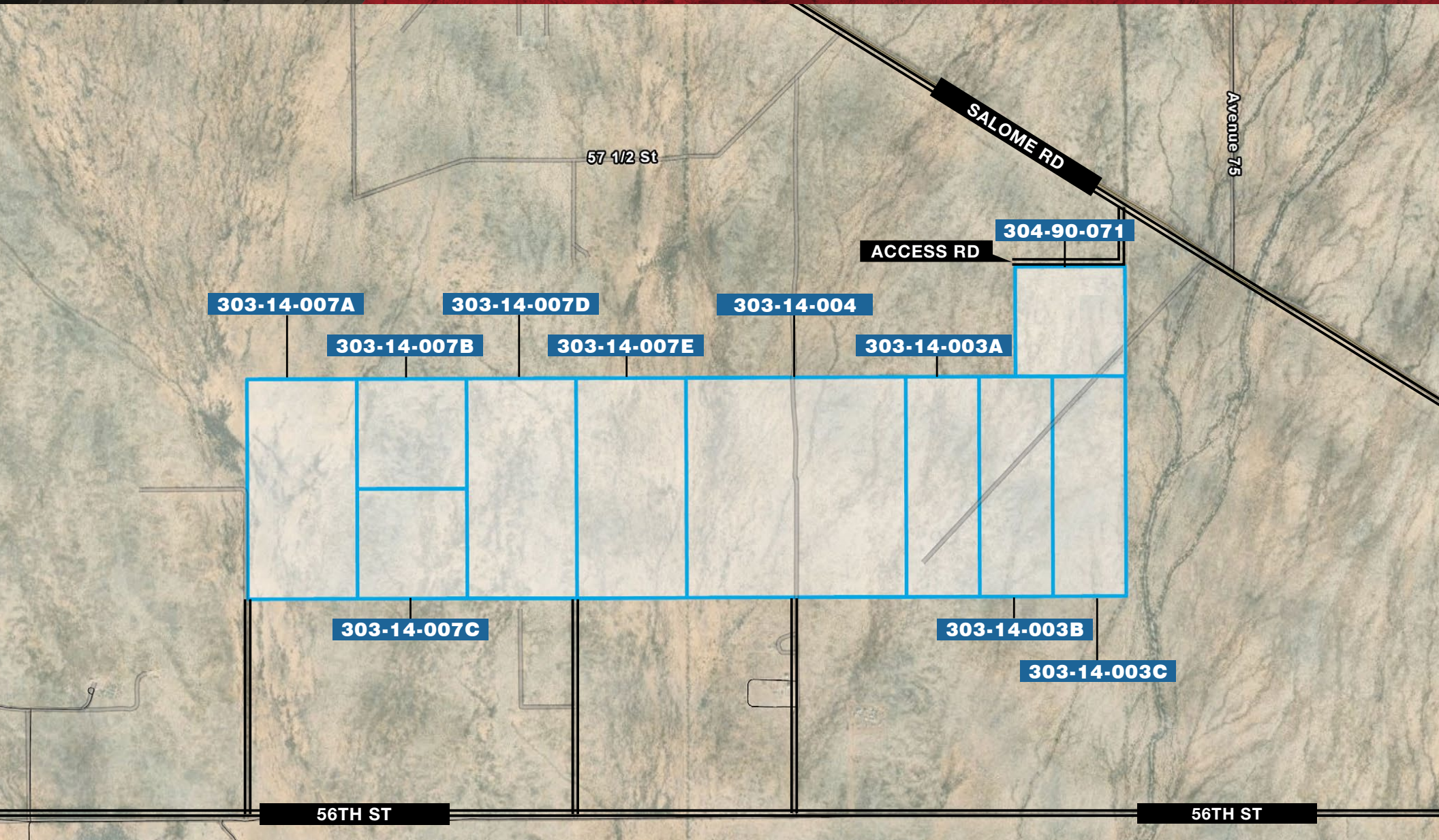


Location:	56th Street N. and Salome Road La Paz County, AZ 85348
Size:	680 Acres
Price:	Call broker for pricing.
Comments:	This 680 Acre property is raw land located near major solar farms.
Land Use:	Solar
Taxes (2022):	La Paz County
Parcels:	303-14-007A, 303-14-007B, 303-14-007C, 303-14-007D, 303-14-007E, 303-14-004, 303-14-003A, 303-14-003B, 303-14-003C, 304-90-071

Features

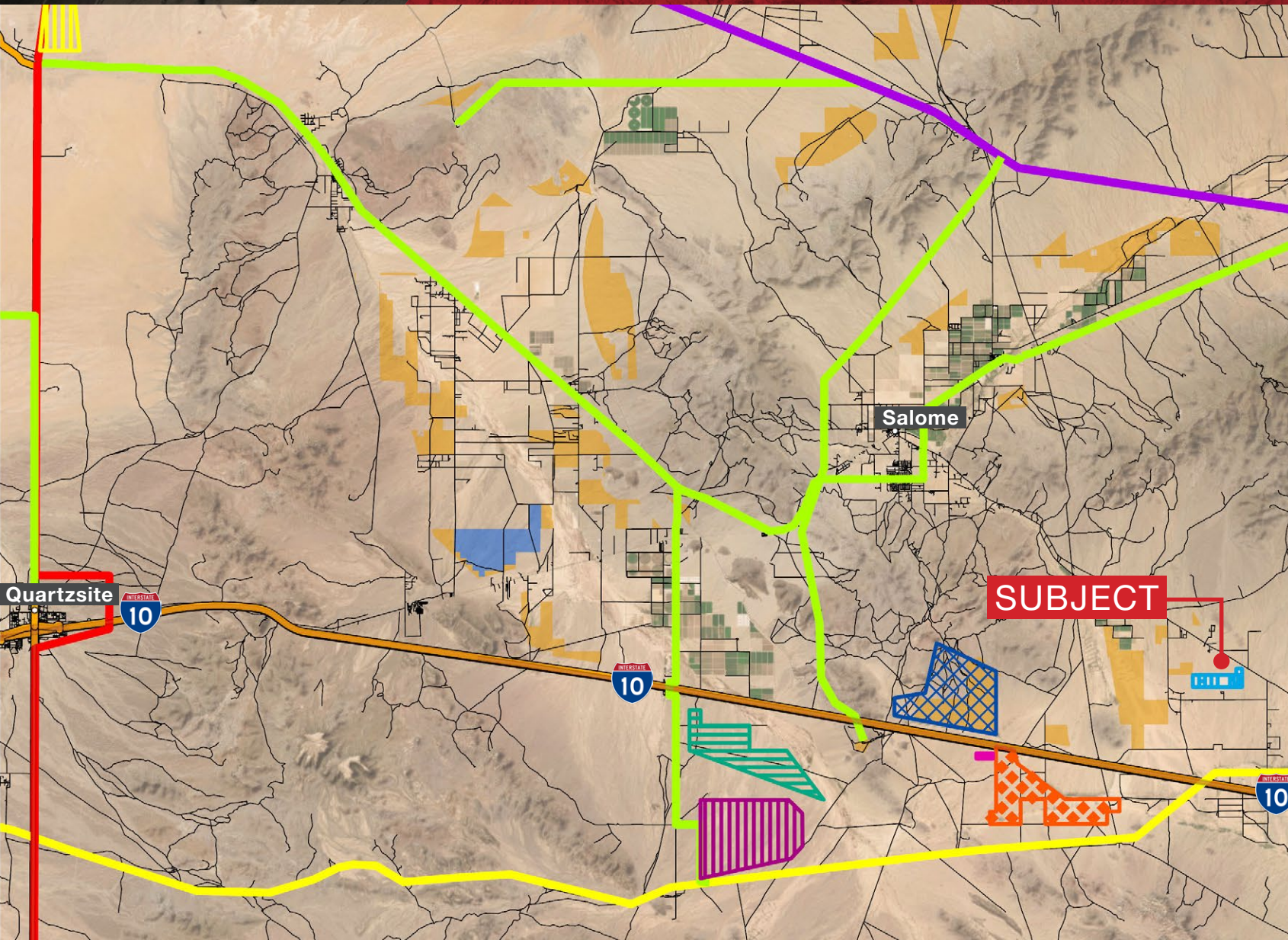
- The land is flat for any development and the slight gradual North to South (1%) slope is very good for solar collection.
- Not in a flood zone.
- The land sits on top of the Harquahala aquifer, with water rights & access.
- It is also located in an Economic Opportunity Zone.
- Contiguous raw land, ready for development
- Located near major solar farms
- Power infrastructure in place
- Investment potential

Properties Plat Map





Solar Developments Map



- Subject Parcels
- Highway
- Local Road
- Electric Power Transmission Lines**
 - 500 (kilovolts)
 - 220-287 (Kilovolts)
 - 100-161 (Kilovolts)
 - Kilovolts Not Available
- Solar Energy Projects**
 - Atlas Solar
 - Bouse Solar Farm
 - Centennial Solar
 - Parker Solar
 - Ranegras Plains Solar
 - Socorro Solar
- BLM Solar Energy Zone**
 - Developable
 - BLM AZ Renewable Energy Dev. Areas

Energizing the Desert: La Paz County Solar Farms

La Paz County's solar initiatives stimulate economic growth, creating jobs and attracting investments in the local community. Current notable solar projects include Atlas, Bouse, Centennial, Parker, Ranegras, and Socorro, collectively contributing hundreds of megawatts to the grid.

The farms exemplify a promising model for arid regions worldwide, demonstrating the potential for solar energy adoption in similar climates. These solar farms harness the abundant sunlight in the region to generate clean and renewable energy. La Paz County's solar farms exemplify the potential for solar energy in arid regions, helping to diversify the energy portfolio of the area.

Sustainable Power Hub: La Paz County Solar Farms Leading the Way

La Paz County, situated in Arizona, hosts prominent solar farms, aligning with federal and California mandates for renewable energy adoption. California's ambitious Renewable Portfolio Standard (RPS) requires utilities to procure 33% of their electricity from renewable sources, a goal that has been raised to 50% by 2025.

Additionally, the state's Solar Initiative provides incentives for the installation of solar systems, further driving the development of solar farms in regions like La Paz County. These mandates emphasize the importance of transitioning

towards cleaner energy sources, making projects like the solar farms in La Paz County instrumental in achieving these targets.

Sustainable Housing Initiatives Flourish in Western Maricopa County

Green housing developments in western Maricopa County prioritize sustainability and energy efficiency.

Teravalis, Arizona's largest master planned community, is a 37,000-acre mixed-use master planned community is projected to include 100,000 homes and 55 million square feet of commercial development. Teravalis is addressing the demand for housing and supporting long-term sustainable growth.

Belmont Arizona is a 25,000 acre master planned community and is envisioned as a quality, sustainable, desert community of the future. Belmont's 25 Villages surround a "City Center" and is integrated through an extensive interconnecting park and trail system.

The City Center provides the opportunity for a diverse mix of uses, including technology based commercial, office, business, manufacturing and mixed use residential zones to work synergistically, creating a dynamic urban center for the community. When completely developed, the project will provide approximately 78,500 homes, over 3,400 acres of open space and up to 6 golf courses, as well as 24 school sites including 3 high school sites.



- The land is flat for any development and the slight gradual North to South (1%) slope is very good for solar collection.
- Not in a flood zone.
- The land sits on top of the Harquahala aquifer, with water rights & access.
- It is also located in an Economic Opportunity Zone.
- Contiguous raw land, ready for development
- Located near major solar farms
- Power infrastructure in place
- Investment potential

Potential Land Uses: Battery Storage

What is Battery Storage?

Battery storage technologies are essential to speeding up the replacement of fossil fuels with renewable energy. Battery storage systems will play an increasingly pivotal role between green energy supplies and responding to electricity demands.

Battery storage, or battery energy storage systems (BESS), are devices that enable energy from renewables, like solar, to be stored and then released when customers need power most. Lithium-ion batteries, which are used in mobile phones and electric vehicles are currently the dominant storage technology for large scale plants to help electricity grids ensure a reliable supply of renewable energy.

Battery Storage Facilities – how they work and benefits

Battery storage facilities have a key part to play in ensuring homes and businesses can be powered by green energy even when the sun isn't shining, or the wind has stopped blowing.

They work through intelligent battery software which uses algorithms to coordinate energy production and computerized control systems to decide when to keep the energy to provide reserves or release it to the grid. Energy is released from the battery storage system during times of peak demand, keeping costs down and electricity flowing during times when Arizonans need additional power support during increasingly dangerous heat waves, peak summer demand, and when the sun goes down.



La Paz County Solar Land

56th Street N. and Salome Rd, La Paz County, AZ 85348

EXCLUSIVE LISTING - For Sale - 680 Acres

For More Information Contact:

Lane G. Neville

Executive Vice President/Partner
lane.neville@naihazizon.com
+1 602 393 6726

Cole Neville

Associate
cole.neville@naihazizon.com
+1 602 393 6066

Whitney Heritage

Agent
whitney.heritage@naihazizon.com
+1 602 393 6783

Matt Westra

Agent
matt.westra@naihazizon.com
+1 602 393 6667

Brandon Hall

Agent
brandon.hall@naihazizon.com
+1 602 393 6668

NAIHorizon

2944 N 44th St, Suite 200
Phoenix, AZ 85018
602 955 4000
naihazizon.com

All information furnished regarding property for sale, rental or financing is from sources deemed reliable, but no warranty or representation is made to the accuracy thereof and same is submitted subject to errors, omissions, change of price, rental or other conditions prior to sale, lease or financing or withdrawal without notice. No liability of any kind is to be imposed on the broker herein.

Sale Conditions: The Property is being sold "As-Is". Owner makes no representations or warranties to the condition of the Property. All due diligence investigation is the responsibility of the prospective buyer. Seller reserves the right to withdraw the Property if minimum pricing expectations are not met through the sale process.