

26070 Brower Circle

Hartford, SD 57033

PROPERTY HIGHLIGHTS

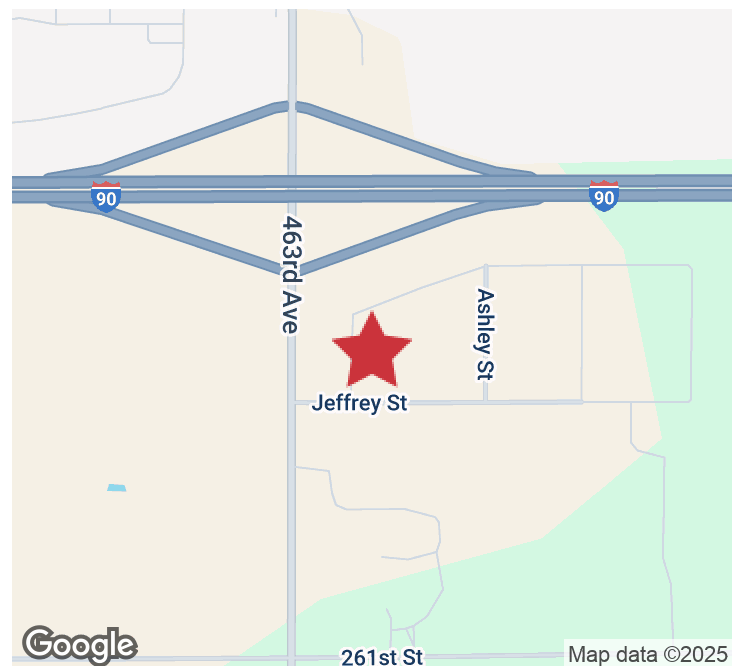
- 4,480 SF industrial warehouse, 1,200 SF office with restrooms and shower
- Two (2) 14' overhead doors
- 16' sidewalls
- Warehouse has reznor & radiant heat, floor drains, crane, and 3-phase power
- 26,000+ SF fenced, gravel parking lot with space for outdoor storage and parking
- Year Built: 1996; Addition Built in 2017
- Zoning: Light Industrial

LOCATION DESCRIPTION

Located on Brower Circle, just off 463rd Avenue, easy access to I-90

Area neighbors include The American Truck Store, ABR Antique Mall, Impact Auto Works, Dakota Classic Mustangs, Zweifel PDR, Paint, & Performance, Full Throttle

Lease Rate	\$6.50/SF NNN
NNN Expenses	\$2.00/SF
Building Size	5,680 SF



MARCUS MAHLEN, CCIM, SIOR
President
mmahlen@naisiouxfalls.com
605.228.9744

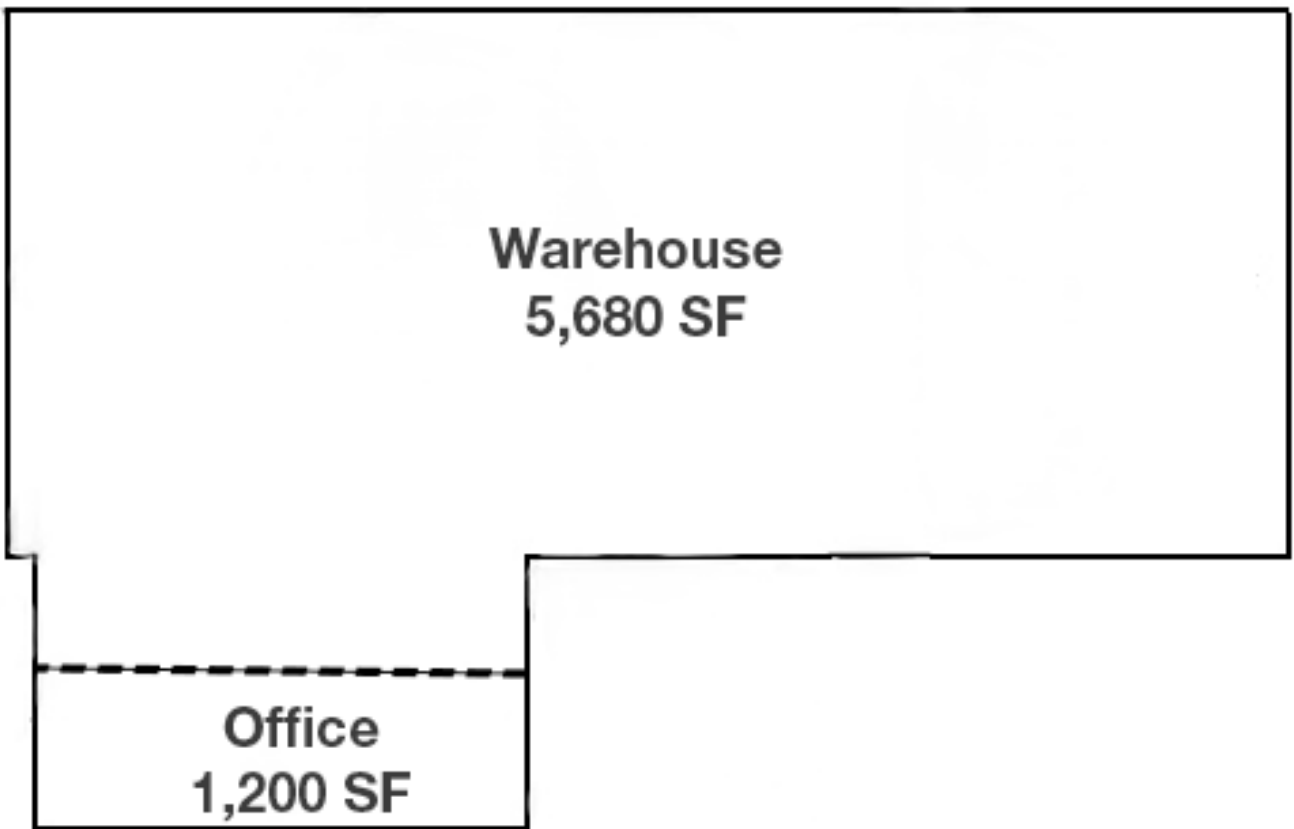
2500 W. 49th St. Suite 100
Sioux Falls, SD 57105
605.357.7100
naisiouxfalls.com

SITE PLAN

26070 BROWER CIRCLE
Hartford, SD 57033

FOR LEASE

Industrial/Warehouse Property

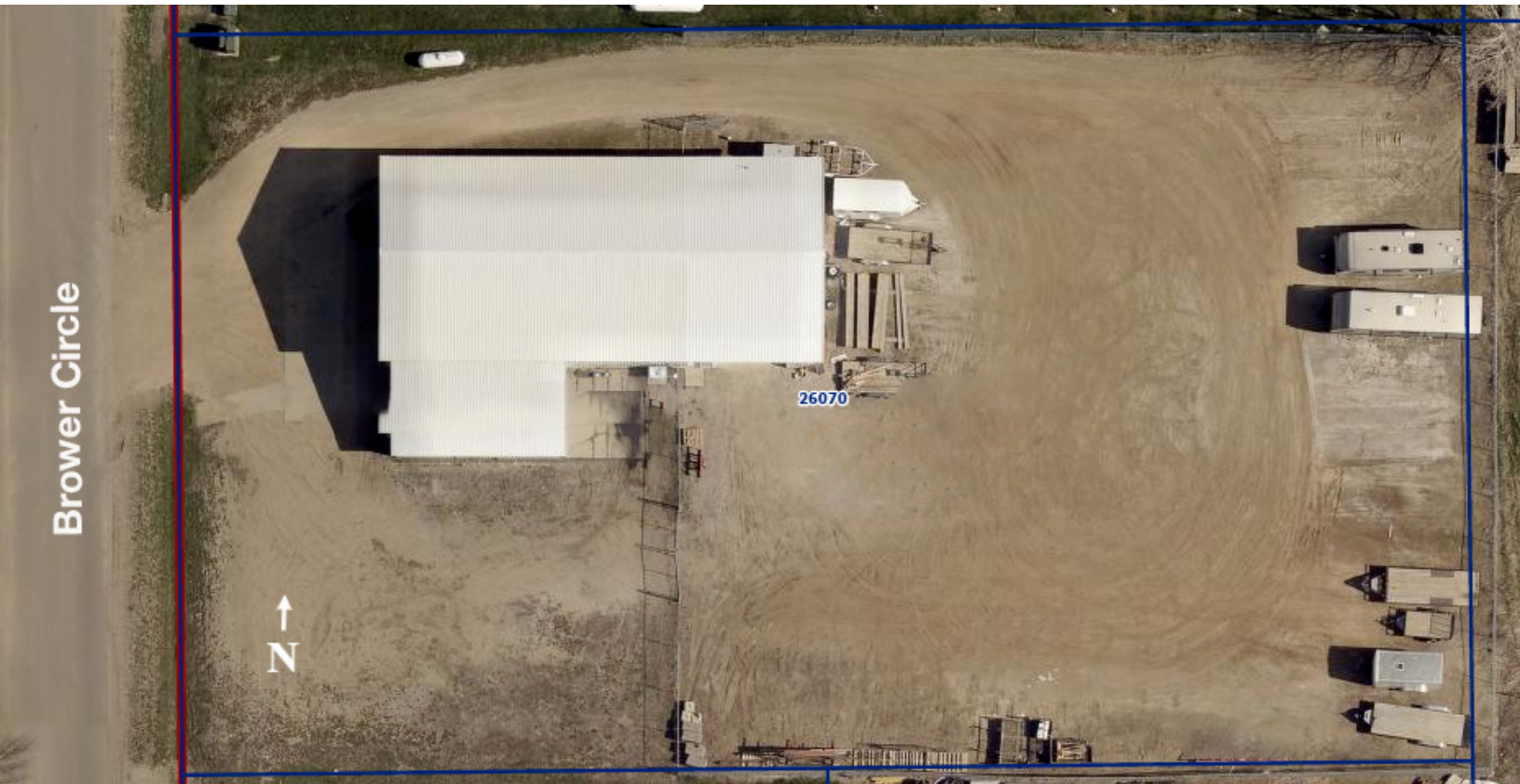


PARCEL

26070 BROWER CIRCLE
Hartford, SD 57033

FOR LEASE

Industrial/Warehouse Property



PHOTOS

26070 BROWER CIRCLE
Hartford, SD 57033

FOR LEASE

Industrial/Warehouse Property



LOCATION MAP

26070 BROWER CIRCLE
Hartford, SD 57033

FOR LEASE

Industrial/Warehouse Property



Google

Map data ©2025 Imagery ©2025 Airbus, Maxar Technologies