

2410-2448 W Dorothy Ln - Moraine Business Center

47,500 SF of Industrial Space Available in Dayton, OH



| SIZE | TERM | RATE | SPACE USE | AVAILABLE |
|------------------|--------------|---------------------------|------------|-----------|
| 22,500-47,500 SF | 3 - 10 Years | \$3.50 /SF/YR* *SF NNN | Industrial | 30 Days |

- Open plan with a flexible design
- Ceiling Height | 14.5'-16'
- 3 Drive Ins with 12' clearance height.
- Space divisible to 22,500sf

ABOUT THE PROPERTY

Open warehouse. Located in Moraine, Ohio, next to the former GM Truck and Bus facility. Conveniently located 1/2 mile from I-75 and convenient to I-70. Excellent business image. Office space design and buildout. Optional uses will be considered.

PROPERTY FACTS FOR 2410-2448 W DOROTHY LN , DAYTON, OH 45439

Rental Rate | \$3.50/SF/Yr
Property Type | Warehouse, Industrial
Minimum Divisible | 22,500 SF

Rentable Building Area | 71,000 SF
Year Built | 1925, Renovated 1996

FEATURES & AMENITIES

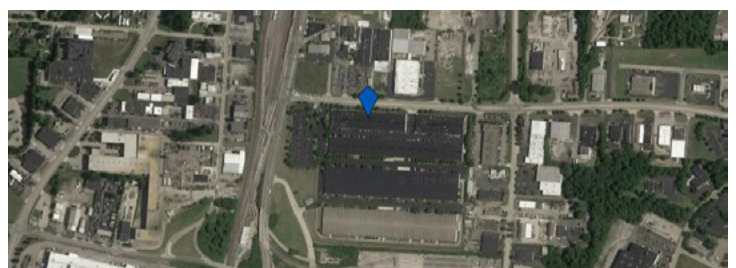
24 Hour Access
Fluorescent Lighting
Bus Line

UTILITIES

Lighting | Fluorescent
Gas | Natural
Water | County Water
Sewer | County Sewer
Heating | Gas

CONTACT

Don Patterson, DEP Dayton
937.545.0008 | don@depdayton.com
715 Stanbridge Dr, Ste 201, Dayton, Ohio 45429
LoopNet.com/Listing/2410-2448-W-Dorothy-Ln-Dayton-OH/3936994/



The information submitted herein is not guaranteed, although obtained from reliable sources, it is subject to errors, omissions, prior sale and withdrawal from the market without notice.