

For Lease

# Stead Blvd. & Silver Lake Rd.



**AVAILABLE**

**± 1,500 SF**

10555 Stead Blvd.  
Reno, NV 89506

**Justin Sigstad**  
Vice President  
775.343.2706  
jsigstad@logiccre.com  
S.0190787.LLC



Listing Snapshot



**\$2.00 PSF/Mo.**  
Lease Rate



**± 1,500 SF**  
Available Square Footage



**\$0.59 PSF**  
Estimated OPEX

Property Highlights

- Fully built-out as restaurant space
- FF&E available
- Over 21,000 CPD on Stead Blvd.

Demographics

	1-mile	3-mile	5-mile
2025 Population	13,034	37,851	50,894
2025 Average Household Income	\$104,492	\$100,821	\$107,488
2025 Total Households	4,402	12,925	17,758





## Aerial



 Government



 Industrial / Office



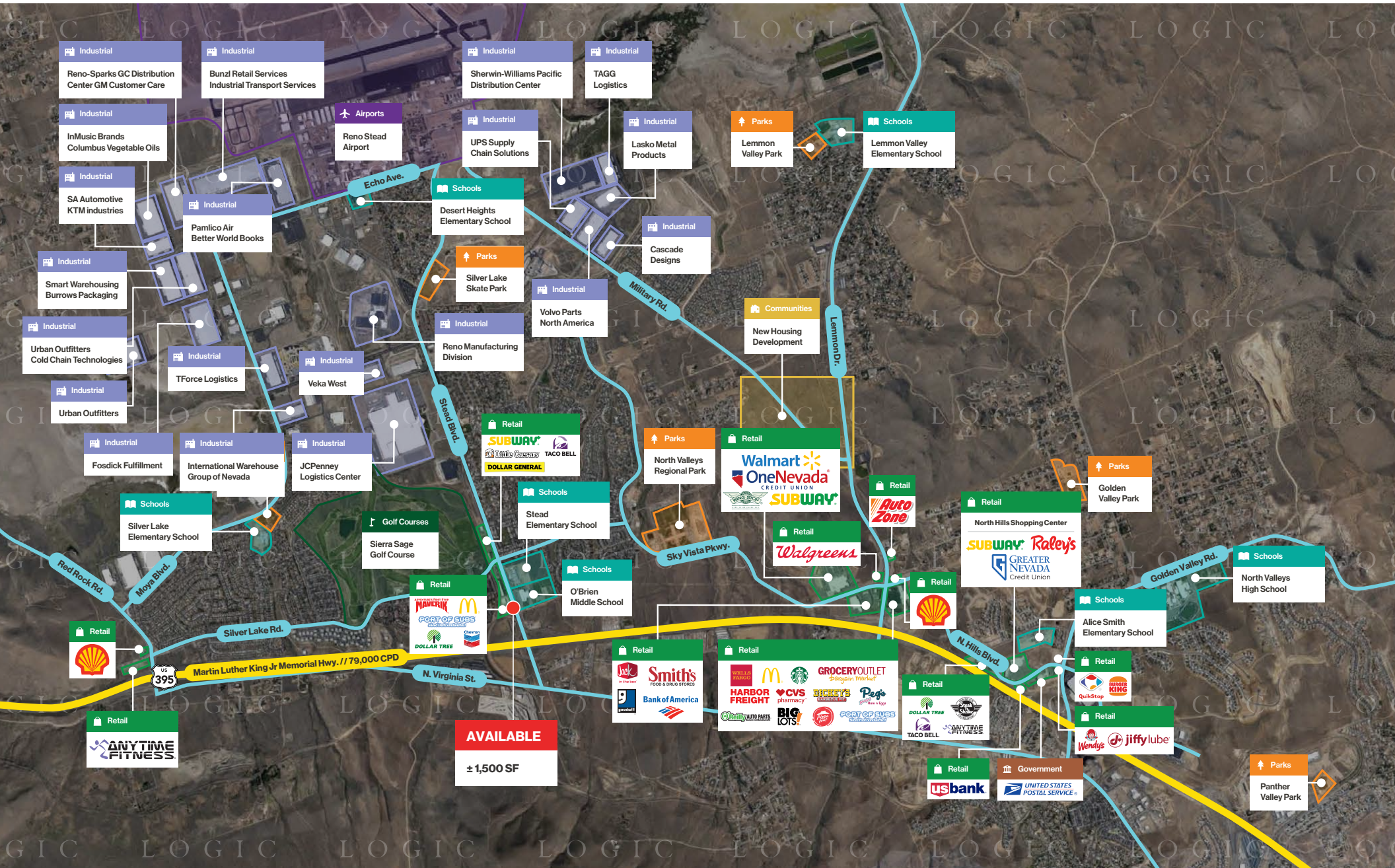
 Communities



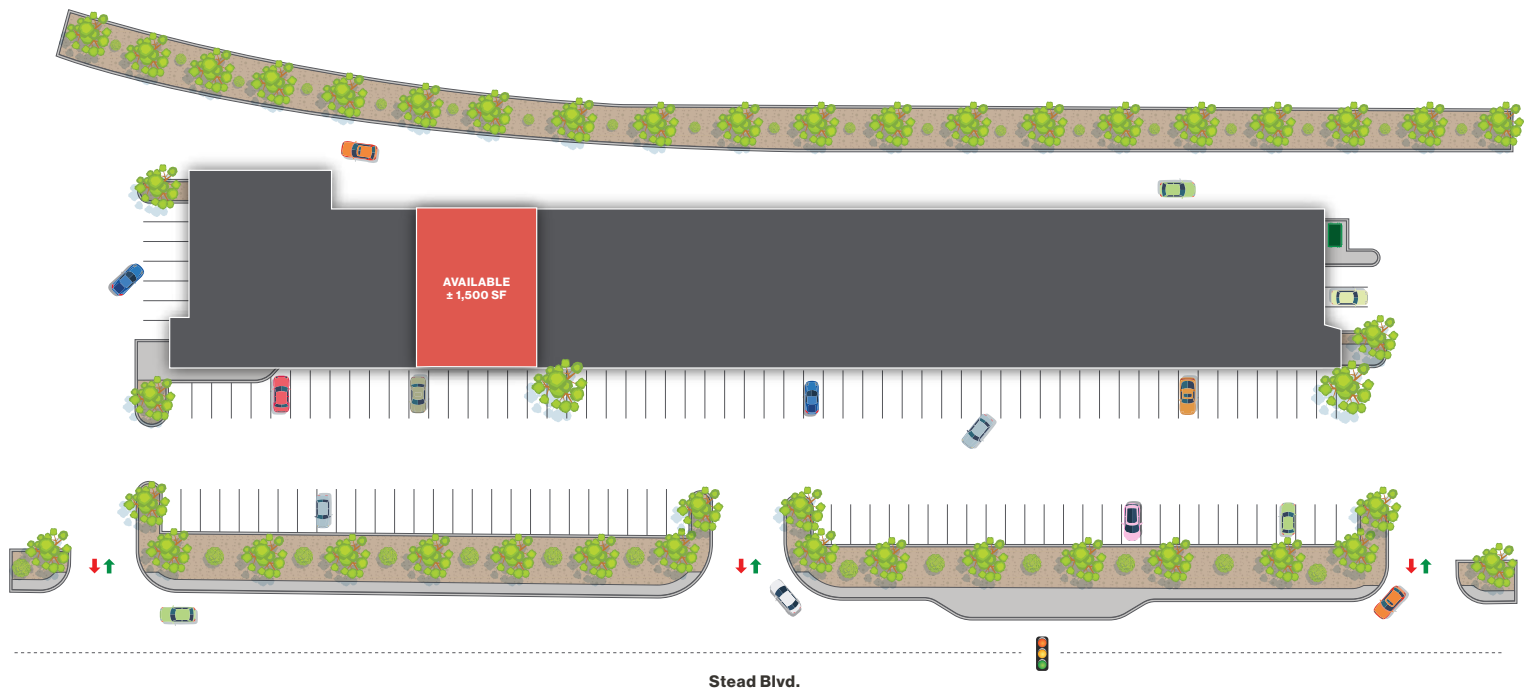
 Airports



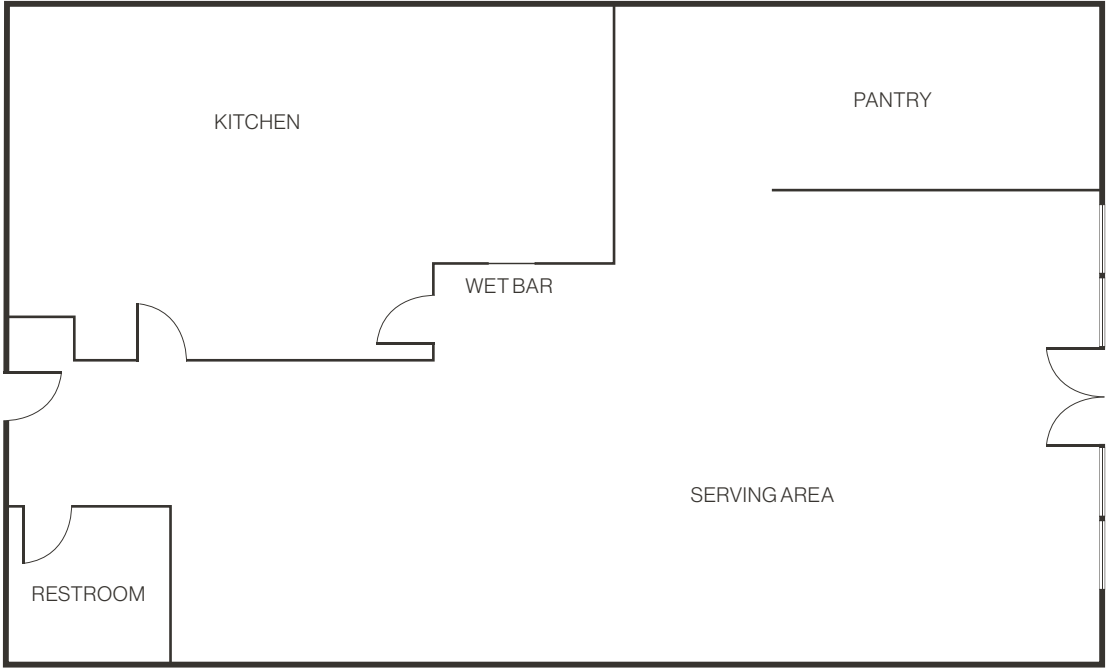
## Golf Courses

 **Parks** Schools Retail

Site Plan

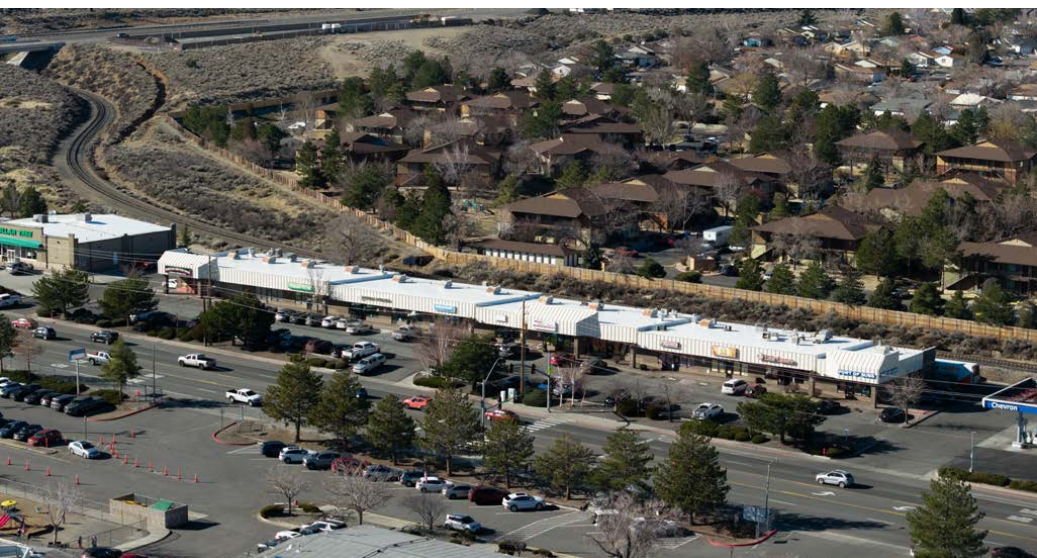


Floor Plan





Property Photos





# LOGIC Commercial Real Estate

## Specializing in Brokerage and Receivership Services



Join our email list and  
connect with us on LinkedIn

The information herein was obtained from sources deemed reliable; however LOGIC Commercial Real Estate makes no guarantees, warranties or representation as to the completeness or accuracy thereof.

For inquiries please reach out to our team.

**Justin Sigstad**  
Vice President  
775.343.2706  
jsigstad@logiccre.com  
S.0190787.LLC