

**BEST LOCATION IN EL CAJON | ACROSS FROM PARKWAY PLAZA MALL**



**CALL NOW!**

**Ben Ameen**  
**619-840-6692**

**BENSDCOMMERCIAL@GMAIL.COM**

*Pride of Ownership*

**Parkway  
Center**

**450 Fletcher Parkway  
El Cajon, CA 92020**

**OFFICE & RETAIL SPACES NOW AVAILABLE!**



810 Jamacha Rd. Suite 102  
El Cajon, CA 92019

**BEN AMEEN**

Broker

(619) 840-6692

bensdcommercial@gmail.com

BRE# 01999481

**VANESSA REZA**

Senior Advisor- Sales & Leasing

(619) 808-1979

VanessaRezaSDCommercial@gmail.com

BRE# 01856646







## OFFERING SUMMARY

**AVAILABLE SF:** 1,080 - 8,356

**LEASE RATE:** \$1.35 - 1.50 SF

**BUILDING SIZE:** 76,140 SF

## PROPERTY OVERVIEW

Directly across from Parkway Plaza. El Cajon's premier shopping center.  
First and second floor spaces available

## PROPERTY HIGHLIGHTS

- Directly across from Parkway Plaza
- Mall Elevator conveniently available
- Easy Freeway Access
- 43,000 Cars per day
- Tenant mix includes the following: US Bank, Citi Bank, Plato's Closet, Maya's Deli, CA Nail Design, Superior Escrow, CCC San Diego, United Guard Services, Farmers Insurance, Doctors weight Loss Clinic, Stallion Fitness, Conroy's Flowers, the Baby Exchange and Fresenius kidney care.

# Parkway Center



810 Jamacha Rd. Suite 102  
El Cajon, CA 92019

### BEN AMEEN

Broker  
(619) 840-6692  
bensdcommercial@gmail.com  
BRE# 01999481

### VANESSA REZA

Senior Advisor- Sales & Leasing  
(619) 808-1979  
VanessaRezaSDCommercial@gmail.com  
BRE# 01856646





## SECOND FLOOR SUITES AVAILABLE

450 Fletcher Parkway, El Cajon, CA 92020

# Parkway Center



**COLDWELL BANKER  
COMMERCIAL**  
810 Jamacha Rd. Suite 102  
El Cajon, CA 92019

### BEN AMEEN

Broker  
(619) 840-6692  
bensdcommercial@gmail.com  
BRE# 01999481

### VANESSA REZA

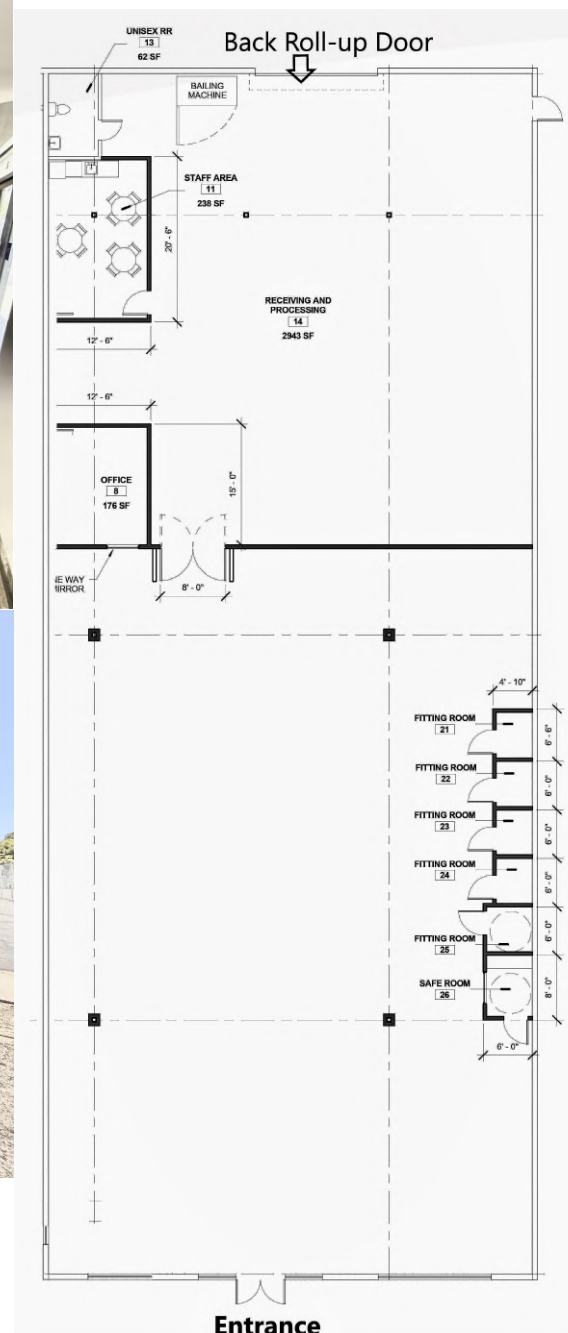
Senior Advisor- Sales & Leasing  
(619) 808-1979  
VanessaRezaSDCommercial@gmail.com  
BRE# 01856646



# Parkway Center

UNIT SIZE(SF)

**Rent: \$1.35 plus \$.46 NNN**



Broker  
(619) 840-6692  
bensdcommercial@gmail.com  
BRE# 01999481

Senior Advisor- Sales & Leasing  
(619) 808-1979  
VanessaRezaSDCommercial@gmail.com  
BRE# 01856646

**RETAIL/OFFICE FOR LEASE**

# Parkway Center

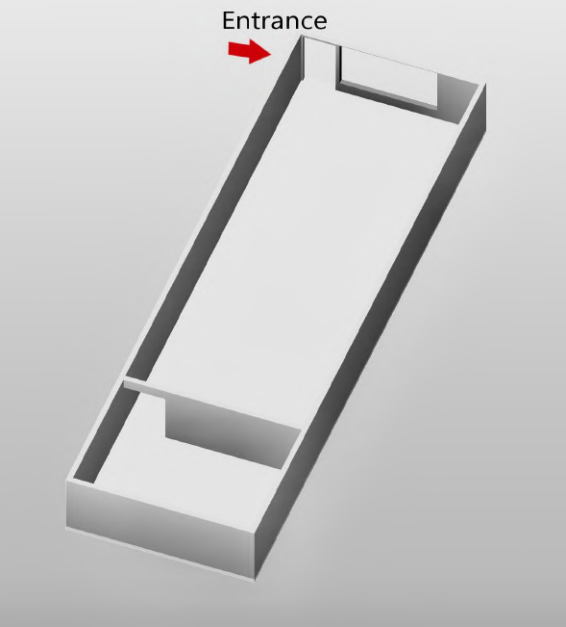
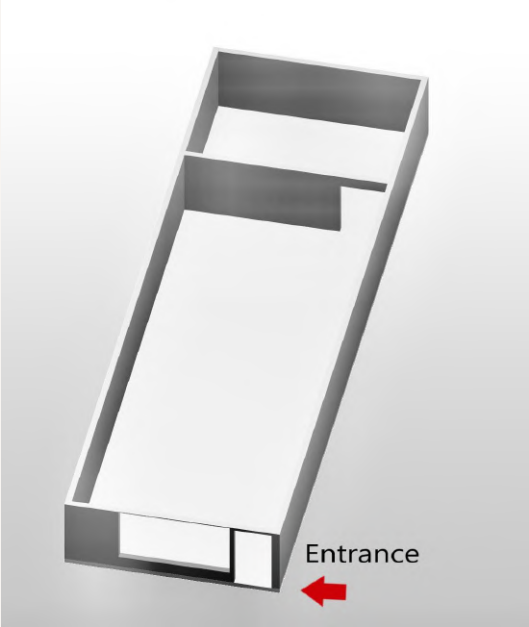
**UNIT # AVAILABLE**

**UNIT SIZE(SF)**

**209**

**1,080 SF**

**Rent: \$1.40 Gross**



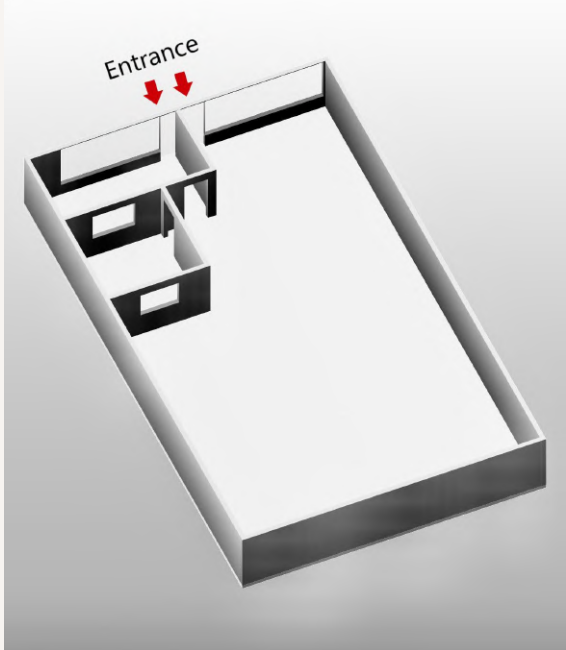
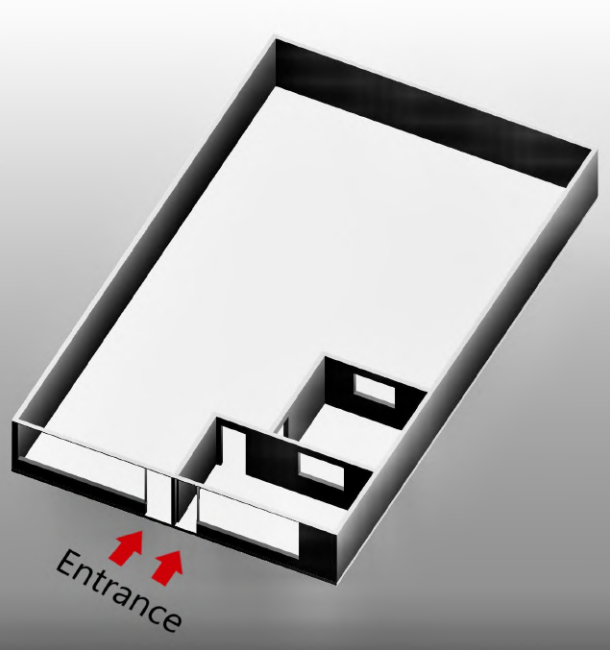
**UNIT # AVAILABLE**

**UNIT SIZE(SF)**

**210-211**

**2,160 SF**

**Rent: \$1.40 Gross**





## RETAIL/OFFICE FOR LEASE

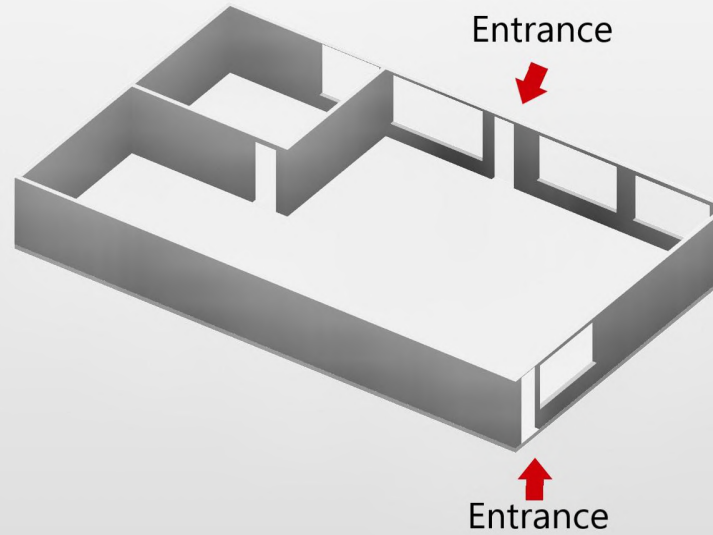
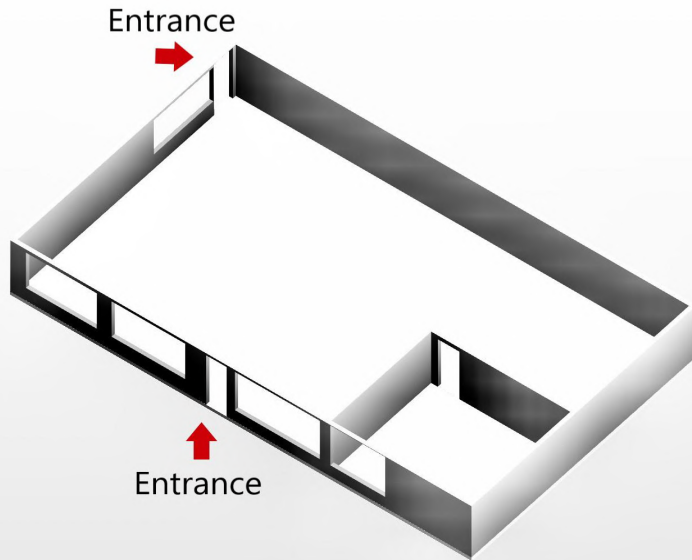
**UNIT # AVAILABLE**

**UNIT SIZE(SF)**

**219-220**

**2,160 SF**

**Rent: \$1.40 Gross**



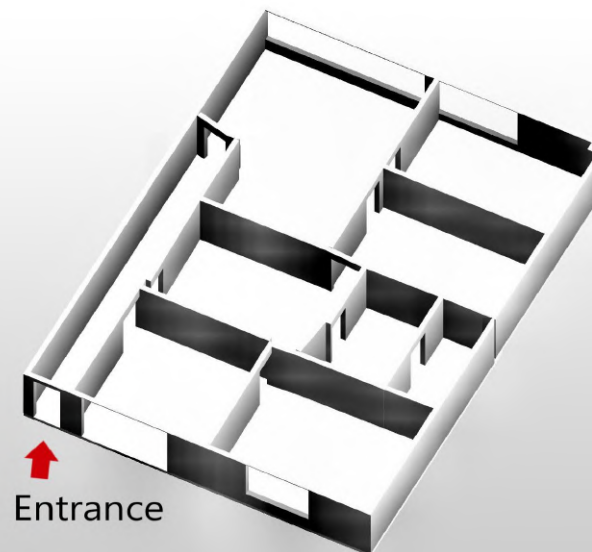
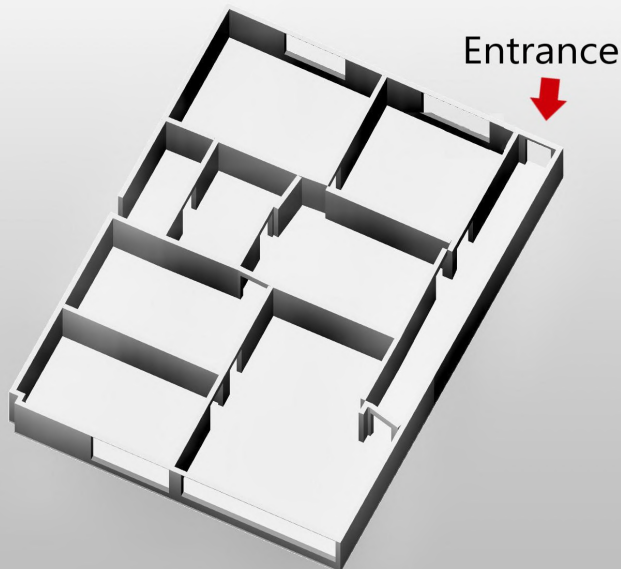
**UNIT # AVAILABLE**

**UNIT SIZE(SF)**

**226**

**1,680 SF**

**Rent: \$1.40 Gross**



## Second Floor

Right at Home SD 1,890 SF 201/202	Skin FX Tattoo 1,080 SF 205	AVAILABLE 2,160 SF 206	FIREARMS UNLIMITED 1,080 SF 208	AVAILABLE 1,080SF 209	AVAILABLE 2,160 SF 210/211	One Save Insurance 1,548 SF 212	<div>E</div> Elevator	Weight Clinic 1,548 SF 213	Superior Escrow 1,080SF 214	Farmers Insurance 1,080SF 215	CNAHHA CEU Network 1,080SF 216	Halah Dresses 2,160 SF 217-218	AVAILABLE 2,160 SF 219/220	CCC San Diego 1,890 SF 221/222
Legendary House of Beauty 1,890 SF 203/204														United Guard Services 1,890 SF 223
														Iglesia De Jesucristo 3,456 SF 224/225

## First Floor

Plato's Closet 6,300 SF 101-105	California Nail Design 1,260 SF 106	Conroys Flowers 2,520 SF 107	Stallion Fitness 5,040 SF 108/112	Elevator	Align Hair Studio 1,260 sf 113	Maya's Deli 1,260 sf 114	Royalty Jewelry 1,260 SF 115	The Baby Exchange 3,780 SF 116/117	Fresenius kidney care 8,050 SF 119	AVAILABLE 8,350 SF 120
---------------------------------------	---	------------------------------------	---	----------	--------------------------------------	--------------------------------	------------------------------------	--	--	------------------------------

Parkway Center

Leasing Office



Fletcher Parkway

Pioneer Way



# Prime Retail Space Available for Lease

PARKWAY CENTER | EL CAJON, CA

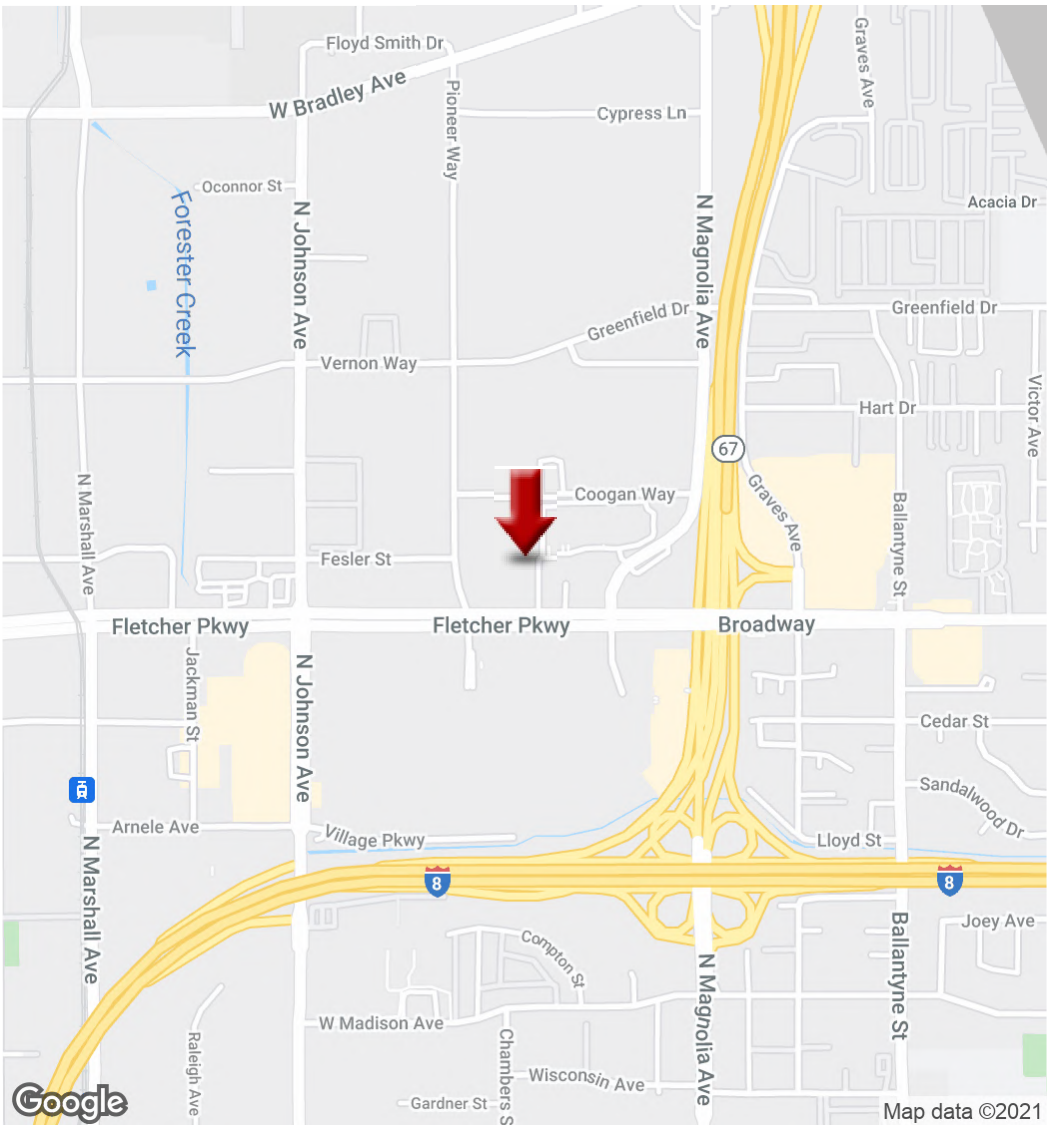




RETAIL/OFFICE FOR LEASE

450 Fletcher Parkway, El Cajon, CA 92020

Parkway Center



**COLDWELL BANKER COMMERCIAL**  
810 Jamacha Rd. Suite 102  
El Cajon, CA 92019

**BEN AMEEN**  
Broker  
(619) 840-6692  
bensdcommercial@gmail.com  
BRE# 01999481

**VANESSA REZA**  
Senior Advisor- Sales & Leasing  
(619) 808-1979  
VanessaRezaSDCommercial@gmail.com  
BRE# 01856646

We obtained the information above from sources we believe to be reliable. However, we have not verified its accuracy and make no guarantee, warranty or representation about it. It is submitted subject to the possibility of errors, omissions, change of price, rental or other conditions, prior sale, lease or financing, or withdrawal without notice. We include projections, opinions, assumptions or estimates for example only, and they may not represent current or future performance of the property. You and your tax and legal advisors should conduct your own investigation of the property and transaction.

Each Office Independently Owned and Operated **CBC Commercial West**