

Begonia Rd

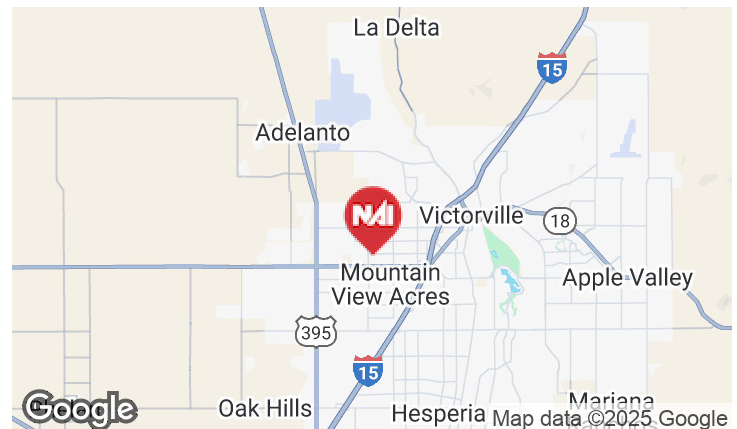
Victorville, California 92392

Property Highlights

- ASKING: \$195,000
- SIZE: ± 2.5 Acres
- APN: 3105-231-38
- ZONING: Medium Density Residential (R-3)

Property Description

- Quick Access to Major Thoroughfares
- Utilities at Site
- Abundant Local Amenities
- High Need for Local Housing



For More Information

Mehdi Mostaedi, ALC

O: 760 780 4210

mmostaedi@naicapital.com | CalDRE #01392527

Jonathan Pollak

O: 760 780 4217

jpollak@naicapital.com | CalDRE #02106603

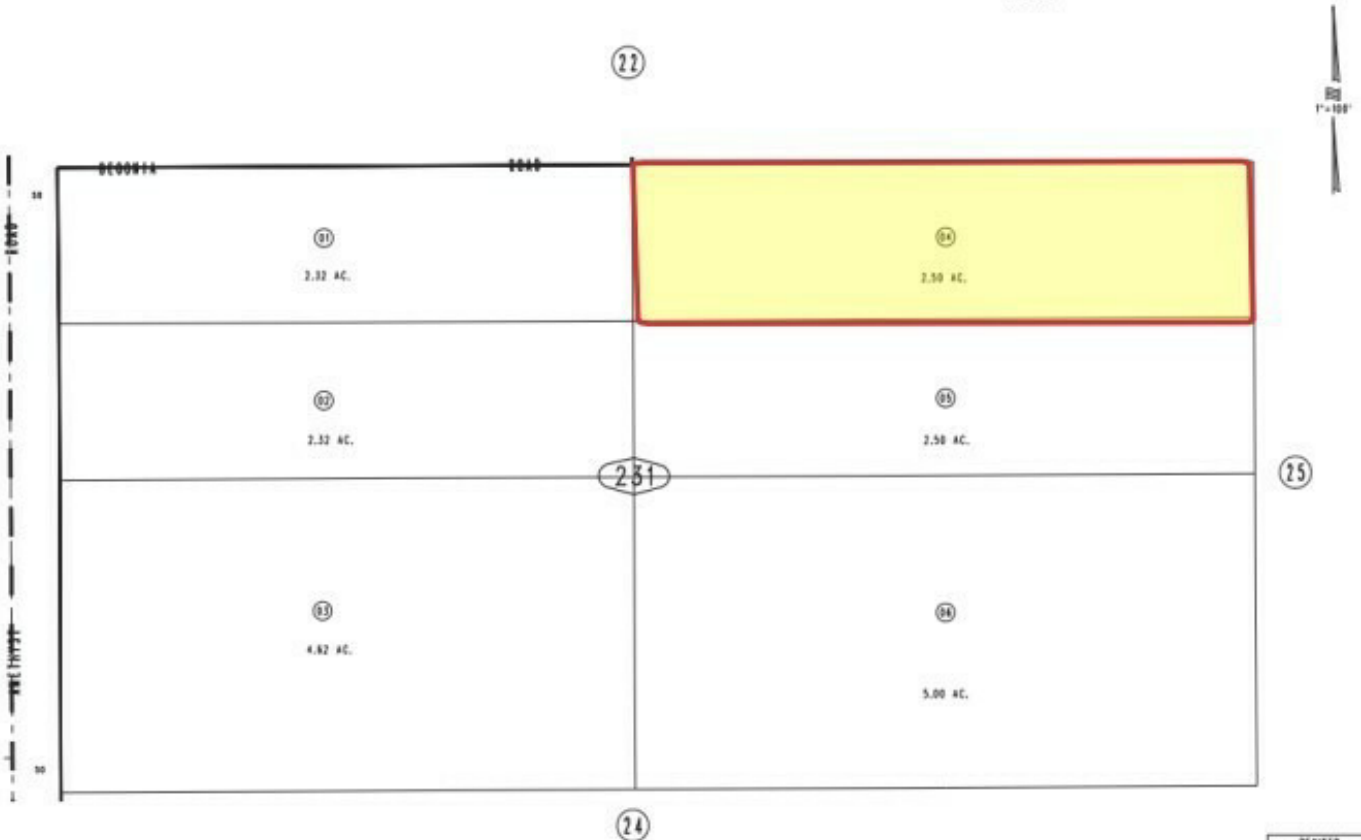
THIS MAP IS FOR THE PURPOSE
OF AD VALOREM TAXATION ONLY.



N.1/2 S.W.1/4 N.W.1/4 Sec. 24, T.5N., R.5W., S.B.M.

City of Victorville
Tax Rate Area
12044

3105 - 23



FEB. 1997

Assessor's Map
Book 3105 Page 23
San Bernardino County

REVISED
02/25/18 RW