



# 801 THOMPSON AVENUE

ROCKVILLE, MD 20852

FOR  
LEASE



**MACKENZIE**

COMMERCIAL REAL ESTATE SERVICES, LLC

# PROPERTY OVERVIEW

## HIGHLIGHTS:

- Located on Twinbrook Parkway a one minute walk from the Twinbrook Metro Stop
- Adjacent to Safeway, Dunkin Donuts, Floyds Barber Shop, Gong Cha, Truist Bank and a multitude of retail shopping and services on Rockville Pike
- Abundant surface parking
- Opportunity for building signage for larger tenants
- Modern entrance to main lobby with security personnel on duty
- Smaller floor plates allow for many perimeter windowed offices & open area with natural light
- Upscale common areas on each floor including generous kitchen and conference rooms

AVAILABLE:

SUITE 300: 6,126 - 13,180 SF  
SUITE 400: 5,867 SF

STORIES:

4

PARKING:

SURFACE

BUILDING SIZE:

53,201 SF

RENTAL RATE:

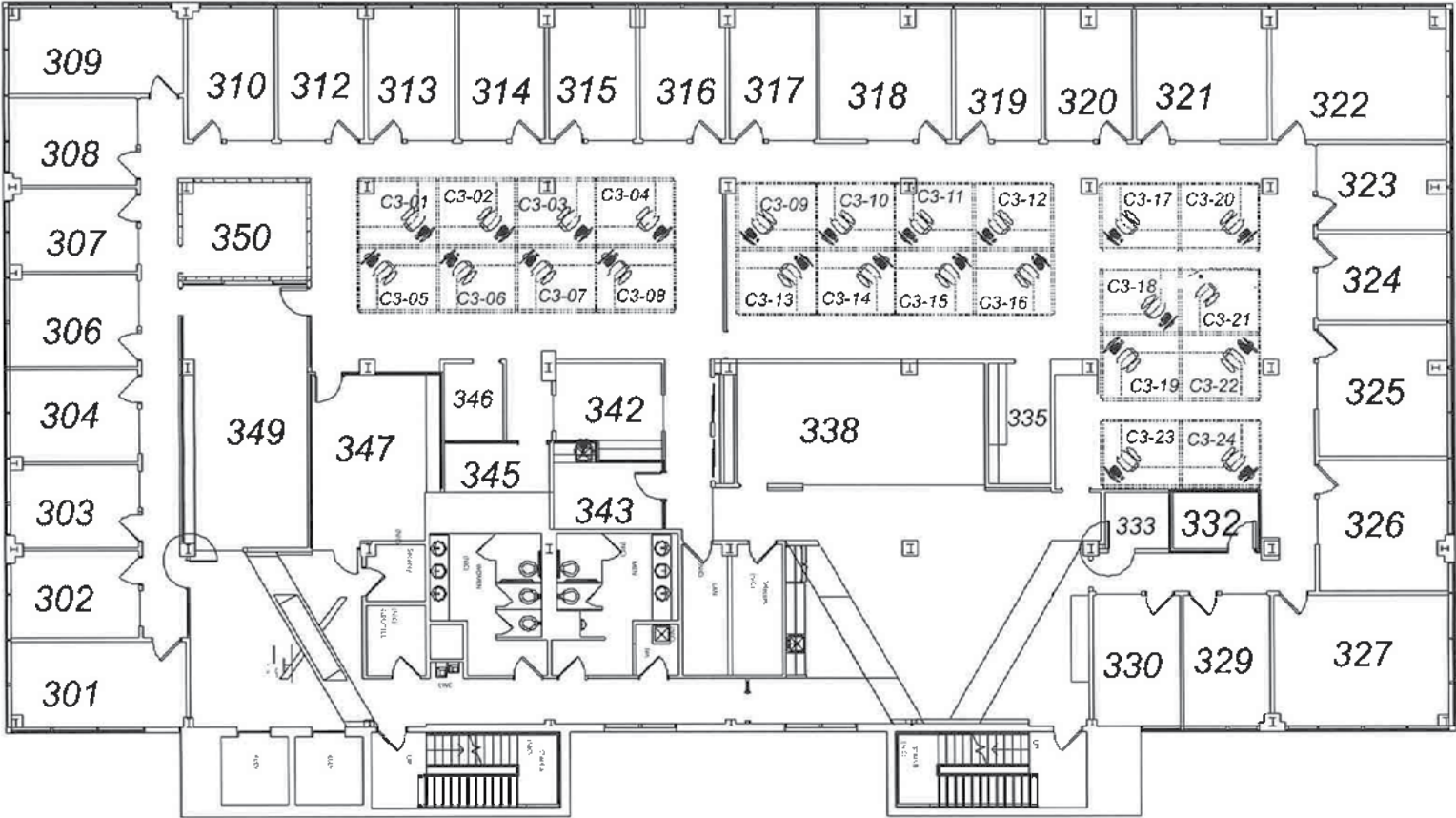
\$30.00/SF



GOOGLE STREET VIEW

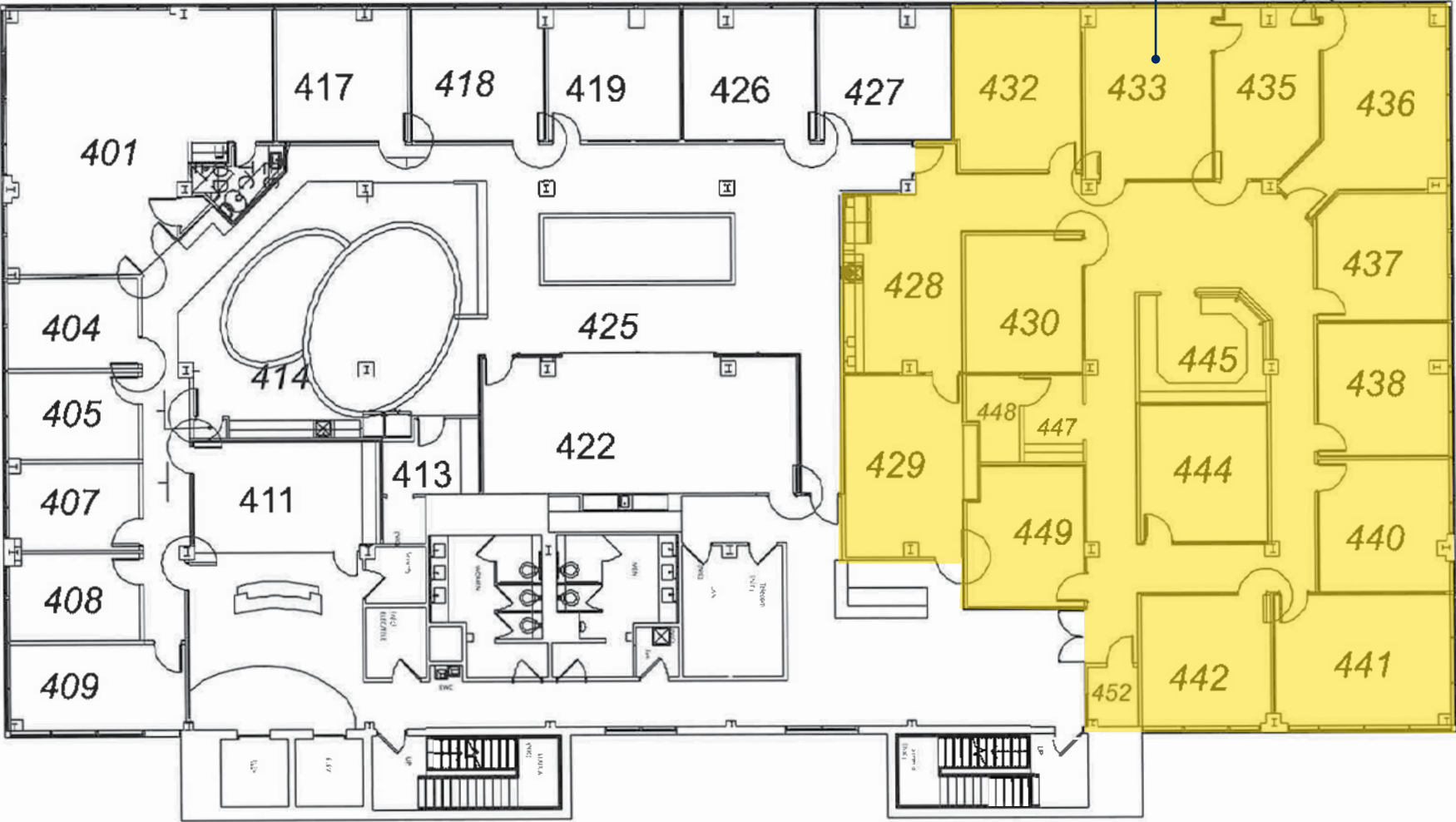
# FLOOR PLAN: 3RD FLOOR

12,500 sf, divisible

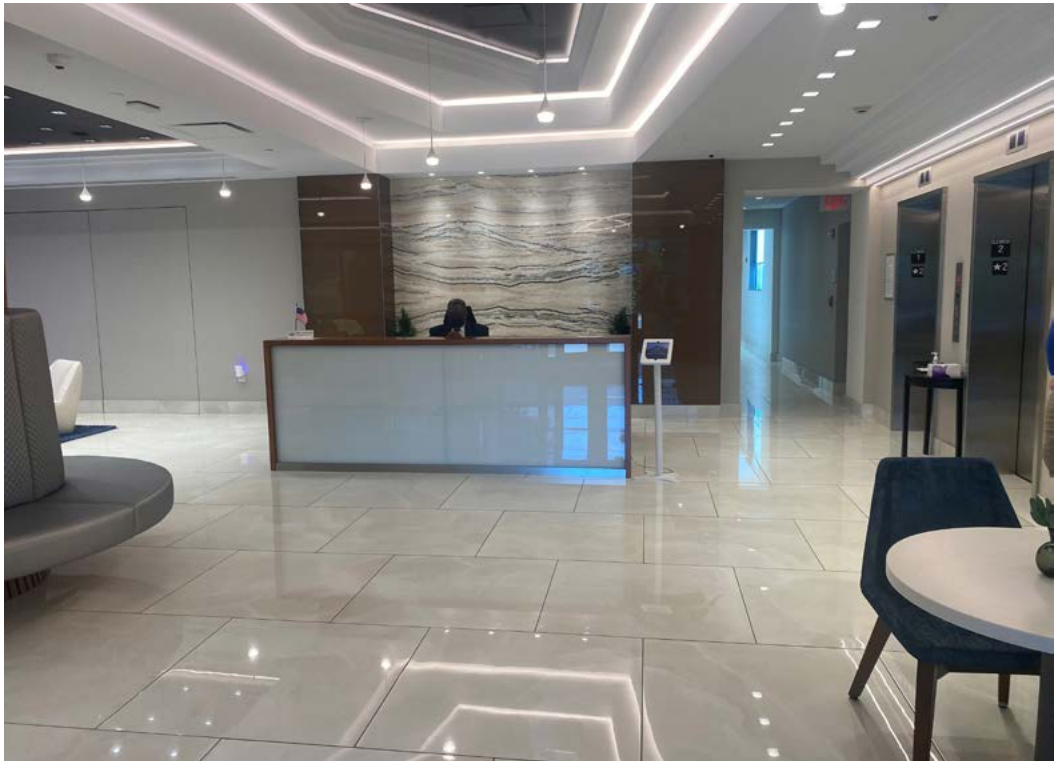


# FLOOR PLAN: 4TH FLOOR

4,500 sf available



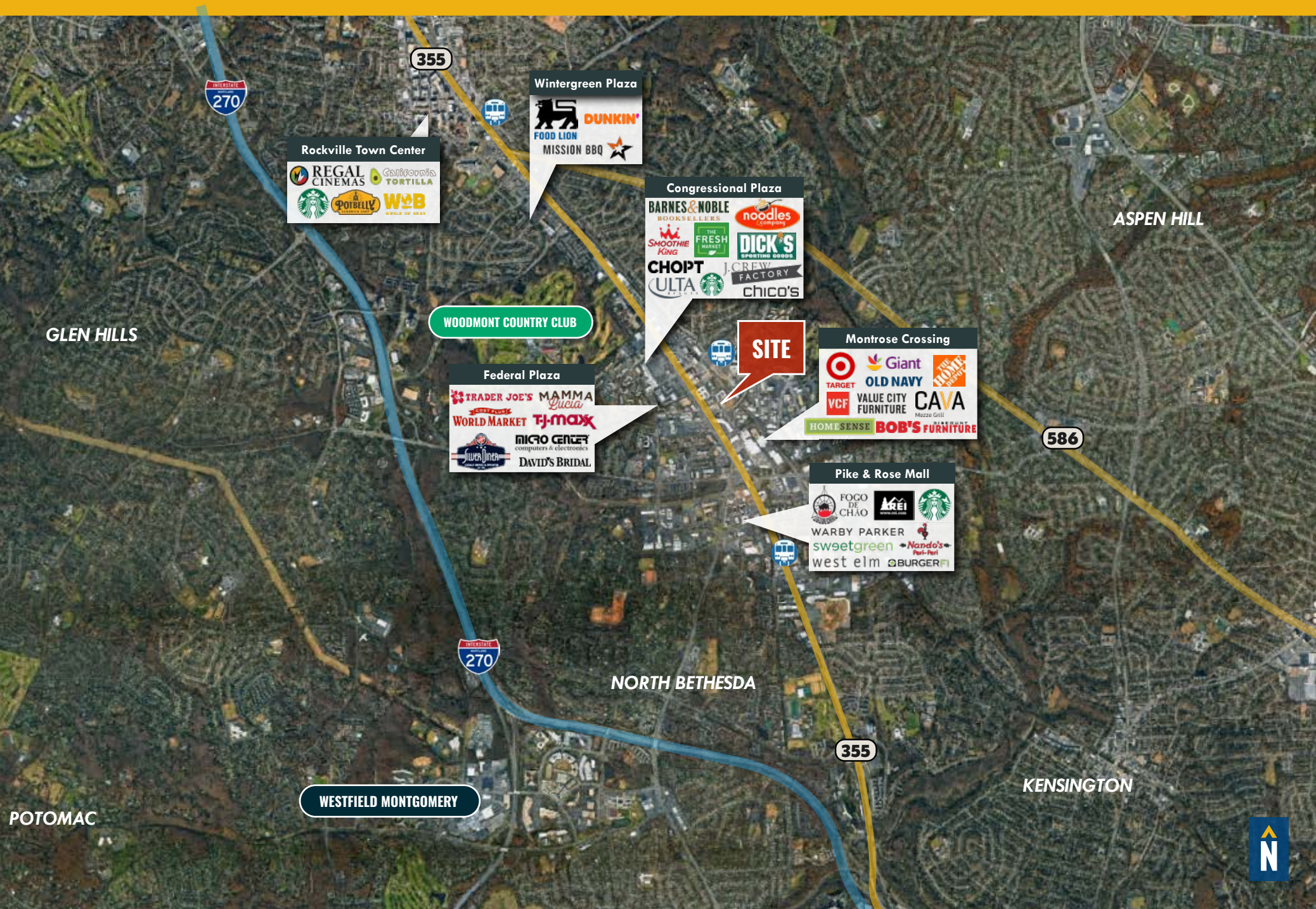
# INTERIOR PHOTOS



# INTERIOR PHOTOS



# AMENITIES



# FOR MORE INFO **CONTACT:**



## **ADAM NACHLAS**

SENIOR VICE PRESIDENT

**443.798.9343**

[ANACHLAS@mackenziecommercial.com](mailto:ANACHLAS@mackenziecommercial.com)



## **GINNY VERNICK**

VICE PRESIDENT

**410.953.0368**

[GVERNICK@mackenziecommercial.com](mailto:GVERNICK@mackenziecommercial.com)



# **MACKENZIE**

COMMERCIAL REAL ESTATE SERVICES, LLC

**410-872-0400**

10175 Little Patuxent Parkway, Suite 902  
Columbia, MD 21044

OFFICES IN: ANNAPOLIS, MD BALTIMORE, MD BEL AIR, MD **COLUMBIA, MD** LUTHERVILLE, MD CHARLOTTESVILLE, VA

[www.MACKENZIECOMMERCIAL.com](http://www.MACKENZIECOMMERCIAL.com)



VISIT **PROPERTY PAGE** FOR MORE INFORMATION.

*No warranty or representation, expressed or implied, is made as to the accuracy of the information contained herein, and same is submitted subject to errors, omissions, change of price, rental or other conditions, withdrawal without notice, and to any specific listing conditions imposed by our principals.*