



## RESTAURANT AND RETAIL AVAILABLE

### McFadden Center

1700-1766 East McFadden Avenue  
Santa Ana, California 92705

### Property Highlights

- Part of Approx. 184,737 SF Best in Class Business Park
- 1,775 SF Retail Space
- 2,560 SF Former Restaurant - Walk-In Fridge, Floor Drains & 2 Restrooms
- Easy Access & Central Location to 55 & 5 Freeways
- Ample Parking w/ Multiple Ingress/Egress
- 50+ Co-Tenants, Providing Strong Day-Time Population
- Strong Synergy with Various Long-Term Tenants
- Monument Sign Available
- Join: 7 Leaves, Pizza Hut, and Miguel's Jr

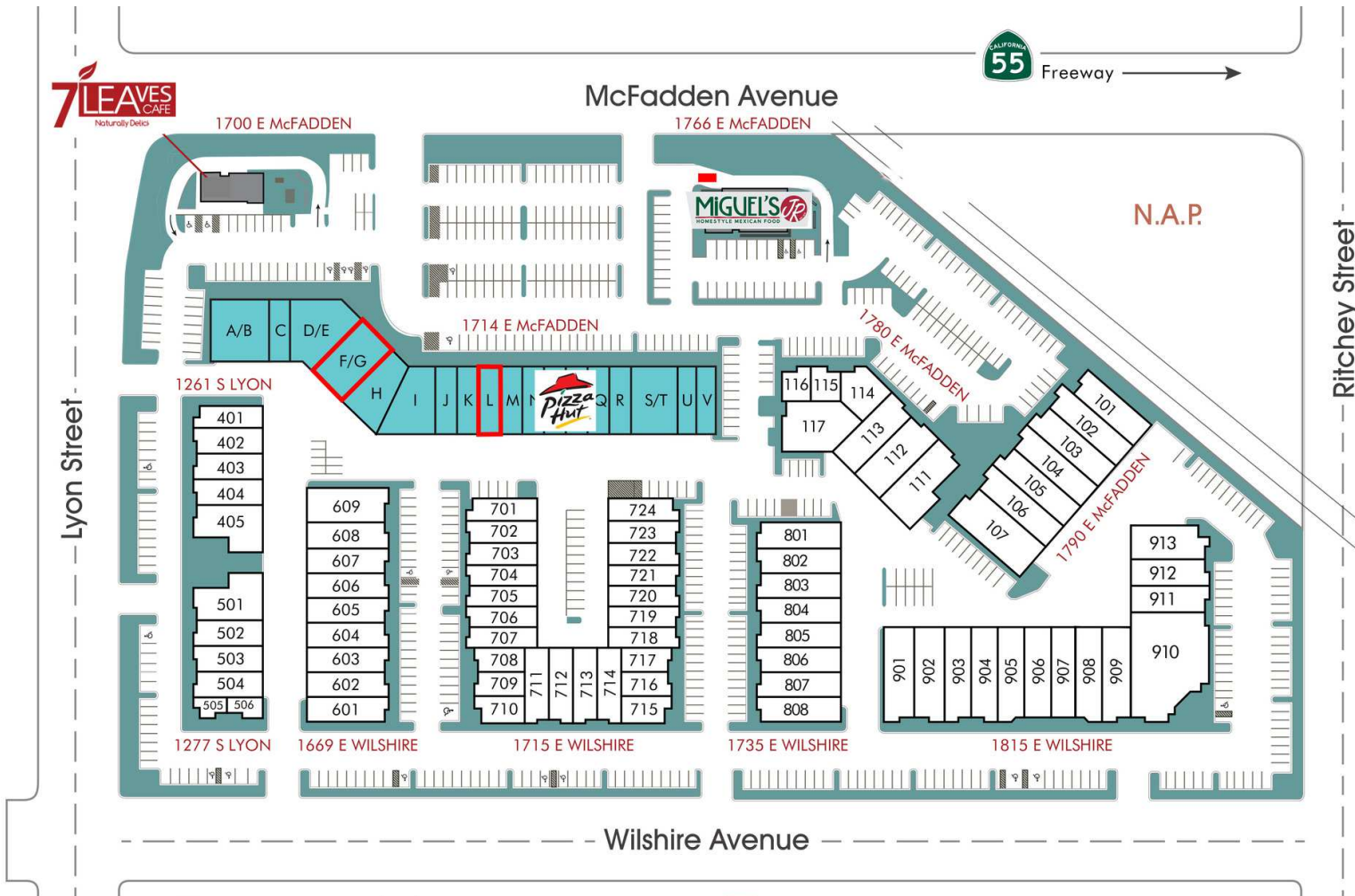
DEMOGRAPHICS	1 MILE	3 MILES	5 MILES
Total Households	7,818	65,693	176,391
Total Population	31,285	256,618	628,170
Average HH Income	\$52,218	\$71,238	\$84,764

SPACES	LEASE RATE	NNN	SPACE SIZE
L	\$1.95 SF/month	\$0.67	1,775 SF
F/G (Restaurant)	\$2.95 SF/month	\$0.67	2,560 SF

**Steve Liu**  
Executive Vice President | C: 714.349.3547  
sliu@naicapital.com | CalDRE #01323150

**Nikki Liu**  
Senior Associate | C: 818.744.3398  
nliu@naicapital.com | CalDRE #02038755





Multi-Tenant Flex Units



In-line Retail & Restaurants

## McFadden Center | Multi-Tenant Flex Park

[mcfaddencenter.com](http://mcfaddencenter.com)

The information contained herein has been obtained from sources we deem reliable. While we have no reason to doubt its accuracy, we do not guarantee it. All rights Reserved.



**Steve Liu**

Executive Vice President | C: 714.349.3547  
slu@naicapital.com | CalDRE #01323150

**Nikki Liu**

Senior Associate | C: 818.744.3398  
nliu@naicapital.com | CalDRE #02038755





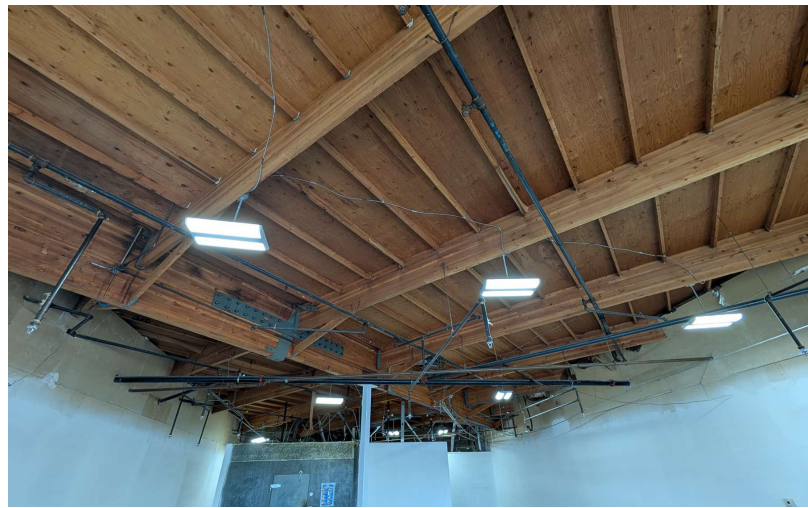
**Steve Liu**

Executive Vice President | C: 714.349.3547  
sliu@naicapital.com | CalDRE #01323150

**Nikki Liu**

Senior Associate | C: 818.744.3398  
nliu@naicapital.com | CalDRE #02038755





**Steve Liu**

Executive Vice President | C: 714.349.3547  
sliu@naicapital.com | CalDRE #01323150

**Nikki Liu**

Senior Associate | C: 818.744.3398  
nliu@naicapital.com | CalDRE #02038755





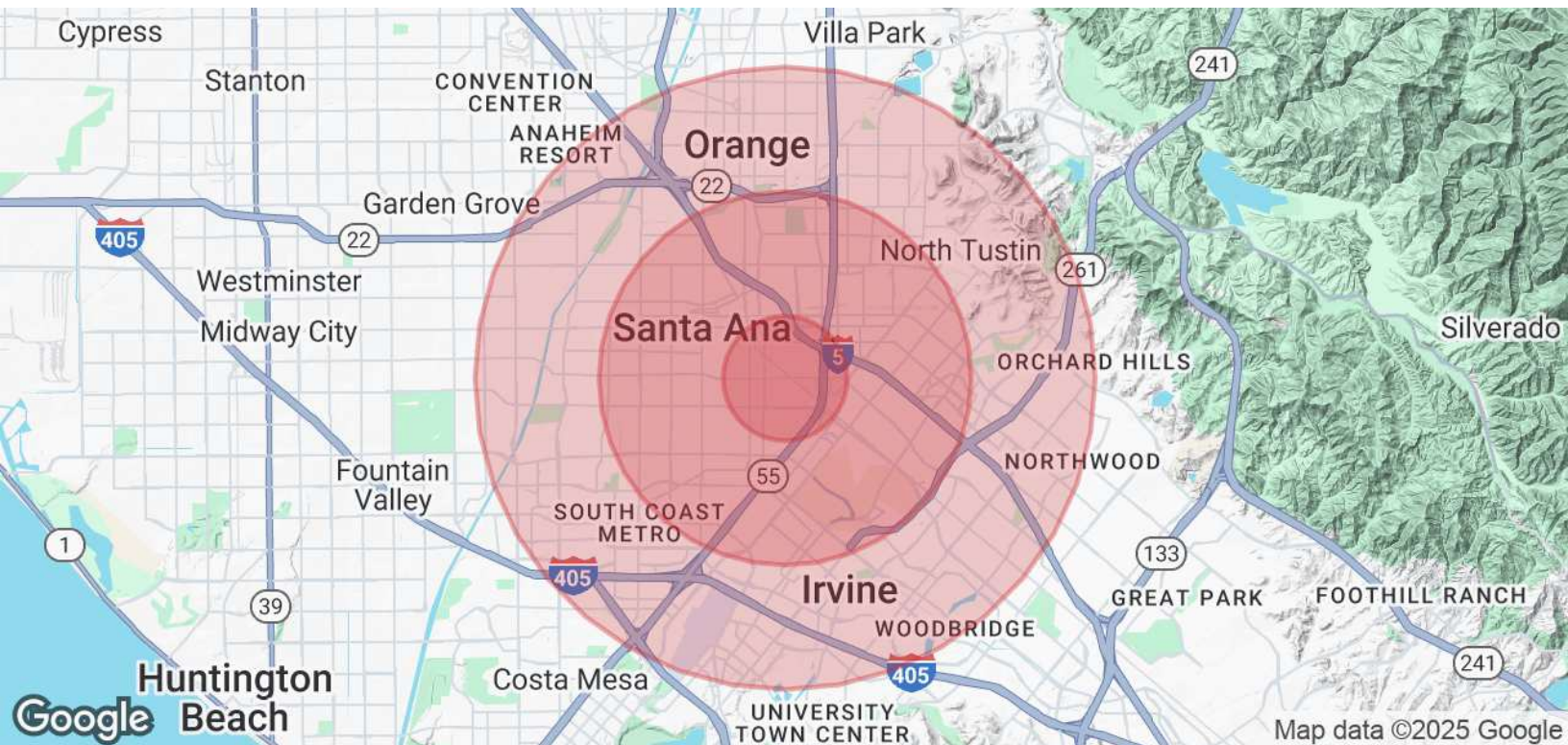
**Steve Liu**

Executive Vice President | C: 714.349.3547  
sliu@naicapital.com | CalDRE #01323150

**Nikki Liu**

Senior Associate | C: 818.744.3398  
nliu@naicapital.com | CalDRE #02038755





POPULATION	1 MILE	3 MILES	5 MILES
Total Population	31,285	256,618	628,170
Average age	26.1	29.7	31.6
Average age (Male)	26.2	29.6	31.2
Average age (Female)	26.2	30.0	32.0
HOUSEHOLDS & INCOME	1 MILE	3 MILES	5 MILES
Total households	7,818	65,693	176,391
# of persons per HH	4.0	3.9	3.6
Average HH income	\$52,218	\$71,238	\$84,764
Average house value	\$427,660	\$519,439	\$549,567

\* Demographic data derived from 2020 ACS - US Census

**Steve Liu**

Executive Vice President | C: 714.349.3547  
sliu@naicapital.com | CalDRE #01323150

**Nikki Liu**

Senior Associate | C: 818.744.3398  
nliu@naicapital.com | CalDRE #02038755

