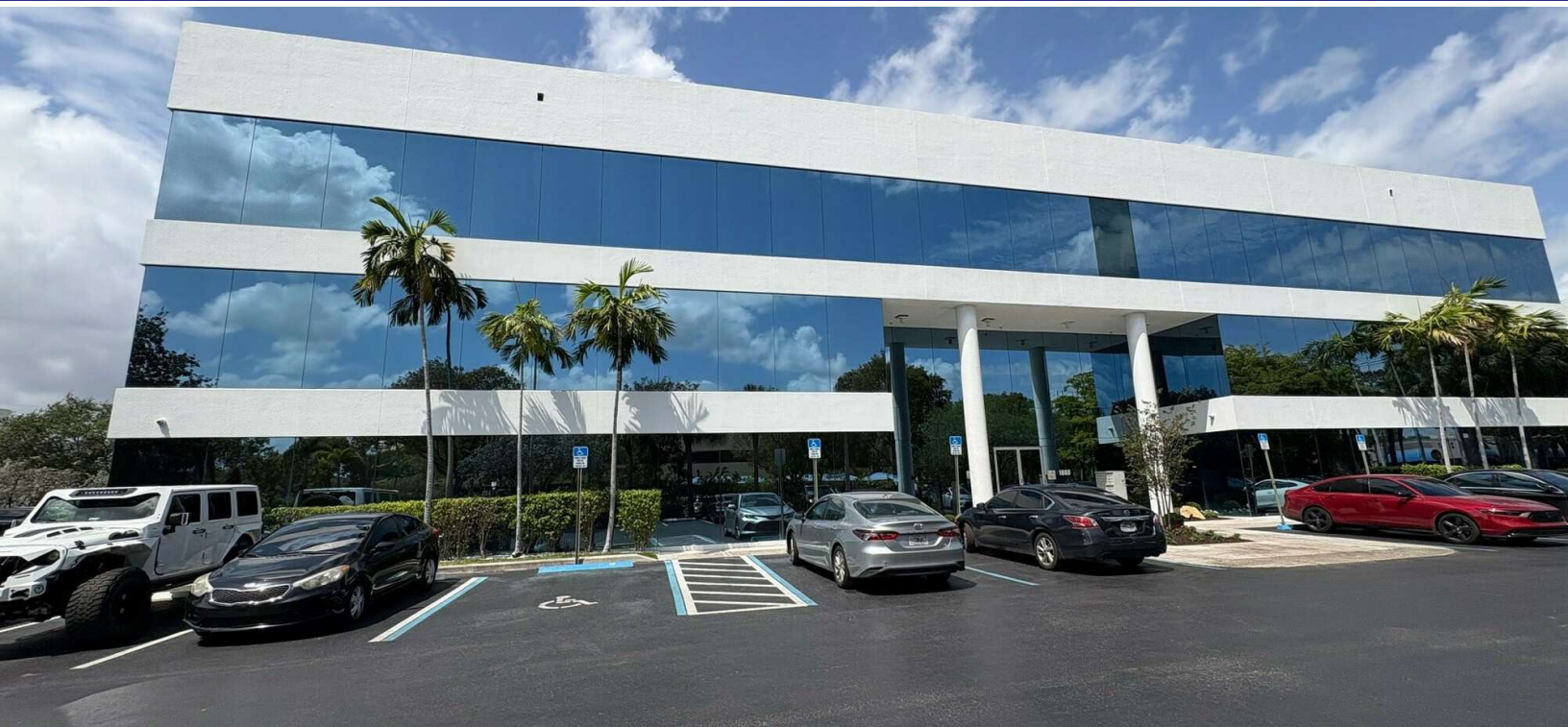


# 1000 NW 65TH ST

1000 NW 65TH ST, FORT LAUDERDALE, FL 33309

## PROPERTY SUMMARY SUITE 110



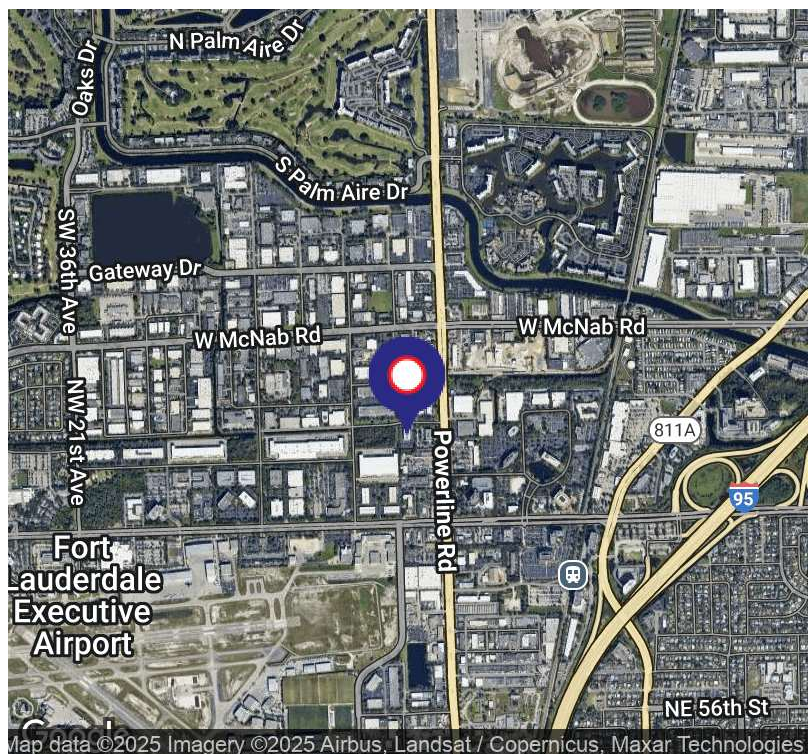
### 360° VIRTUAL TOUR

#### PROPERTY DESCRIPTION

Recently renovated 3,609 SF corner office space with floor to ceiling glass. Can be subdivided to 1,556 SF and 2,053 SF. Five offices, reception, kitchen, storage and ample open space. Sublease term expires 12/31/2028. Secured entry via phone app. Can deliver furnished and wired for headquarters/call center. Excellent I-95 access via Cypress Creek Rd. CAM is \$10.50 and includes janitorial. VIRTUAL TOUR: <https://my.matterport.com/show/?m=gvhK7nh7GAj>

#### PROPERTY HIGHLIGHTS

- 3,609 SF
- Can be subdivided to 1,556 SF and 2,053 SF
- Recently renovated
- 5 offices Reception and Kitchen
- Multipurpose room or storage
- Conference room and LED lighting
- Can deliver furnished and wired for HQ or Call Center
- \$18.50 psf base rent + CAM is \$10.50 psf



#### KEN SILBERLING

Sr. VP - Brokerage and Tenant Representation  
Direct: 561.245.0295 | Cell: 561.245.0295  
[ken@levyrai.com](mailto:ken@levyrai.com)

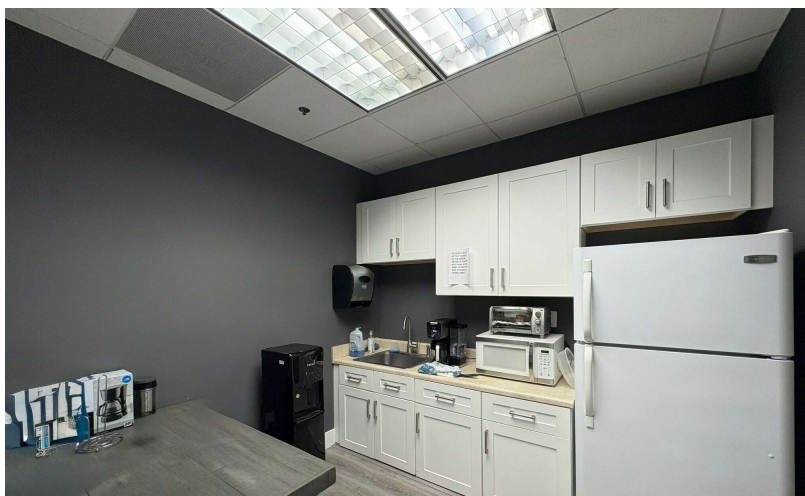
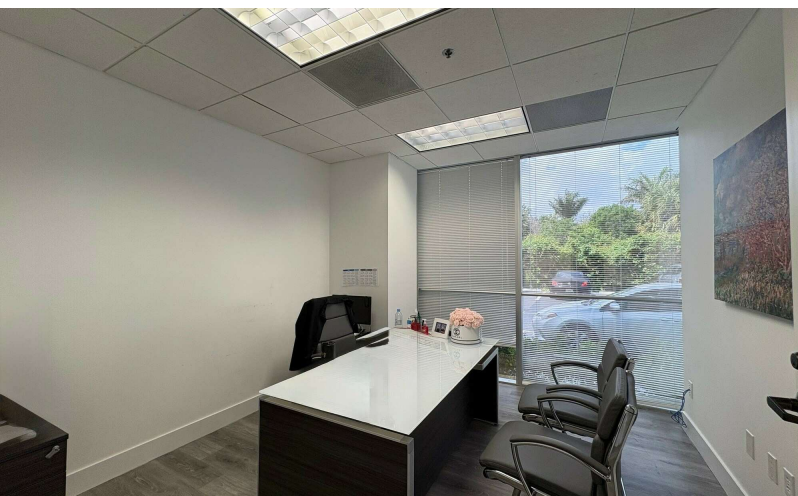




# 1000 NW 65TH ST

1000 NW 65TH ST, FORT LAUDERDALE, FL 33309

ADDITIONAL PHOTOS SUITE 110



## KEN SILBERLING

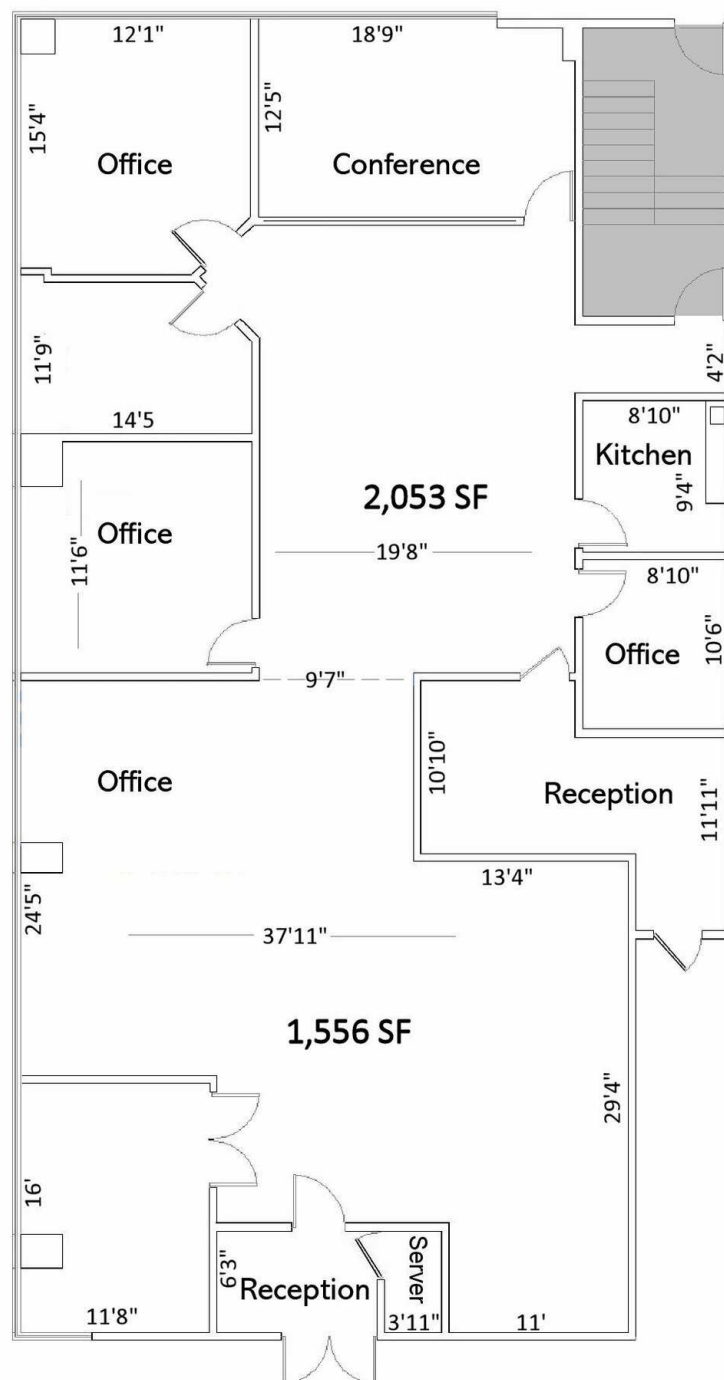
Sr. VP - Brokerage and Tenant Representation  
Direct: 561.245.0295 | Cell: 561.245.0295  
ken@levyrai.com



# 1000 NW 65TH ST

1000 NW 65TH ST, FORT LAUDERDALE, FL 33309

## SUITE 110 FLOOR PLAN



### KEN SILBERLING

Sr. VP - Brokerage and Tenant Representation  
 Direct: 561.245.0295 | Cell: 561.245.0295  
[ken@levyrai.com](mailto:ken@levyrai.com)

